

Product Datasheet

Kir2.1 Antibody (S112) - BSA Free NBP2-12900

Unit Size: 0.1 mg

Store at 4C short term. Aliquot and store at -20C long term. Avoid freeze-thaw cycles.

www.novusbio.com



technical@novusbio.com

Reviews: 1 Publications: 1

Protocols, Publications, Related Products, Reviews, Research Tools and Images at:
www.novusbio.com/NBP2-12900

Updated 9/9/2025 v.20.1

**Earn rewards for product
reviews and publications.**

Submit a publication at www.novusbio.com/publications

Submit a review at www.novusbio.com/reviews/destination/NBP2-12900



NBP2-12900

Kir2.1 Antibody (S112) - BSA Free

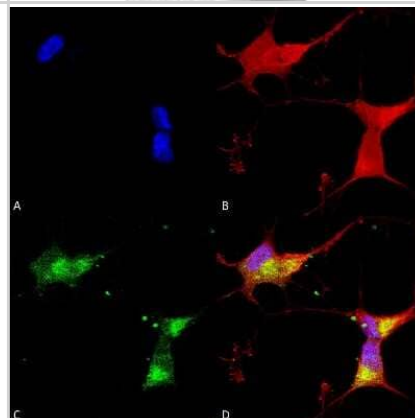
Product Information	
Unit Size	0.1 mg
Concentration	1 mg/ml
Storage	Store at 4C short term. Aliquot and store at -20C long term. Avoid freeze-thaw cycles.
Clonality	Monoclonal
Clone	S112
Preservative	0.09% Sodium Azide
Isotype	IgG1
Purity	Protein G purified
Buffer	PBS (pH 7.4), 50% Glycerol
Product Description	
Description	Novus Biologicals Mouse Kir2.1 Antibody (S112) - BSA Free (NBP2-12900) is a monoclonal antibody validated for use in IHC, WB and ICC/IF. Anti-Kir2.1 Antibody: Cited in 1 publication. All Novus Biologicals antibodies are covered by our 100% guarantee.
Host	Mouse
Gene ID	3759
Gene Symbol	KCNJ2
Species	Human, Mouse, Rat, Monkey
Specificity/Sensitivity	Detects approx 45 kDa. No cross-reactivity against Kir2.2 or Kir2.3.
Immunogen	Fusion protein amino acids 41-64 and 189-428 of mouse Kir2.1
Product Application Details	
Applications	Western Blot, Immunohistochemistry-Paraffin, Immunocytochemistry/Immunofluorescence, Immunohistochemistry, Microarray
Recommended Dilutions	Western Blot 1:1000, Immunohistochemistry 1:1000, Immunocytochemistry/Immunofluorescence 1:100, Immunohistochemistry-Paraffin, Microarray
Application Notes	1 ug/mL of Kir2.1 Antibody was sufficient for detection of Kir2.1 in 10 ug of rat brain lysate by colorimetric immunoblot analysis using Goat anti-mouse IgG:HRP as the secondary Antibody.

Images

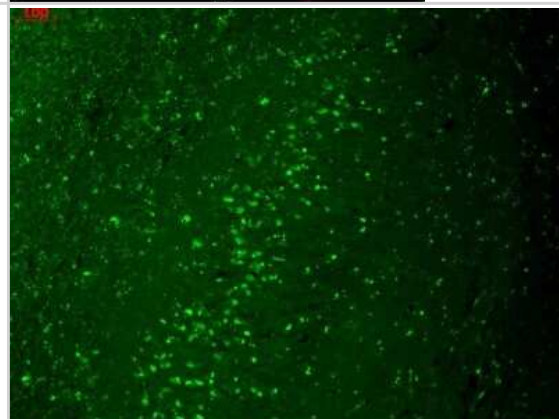
Western Blot: Kir2.1 Antibody (S112) [NBP2-12900] - Western Blot analysis of Monkey COS transient cell lysate showing detection of Kir2.1 Potassium Channel protein using Mouse Anti-Kir2.1 Potassium Channel Monoclonal Antibody, Clone S112 (NBP2-12900). Load: 15 ug. Block: 1.5% BSA for 30 minutes at RT. Primary Antibody: Mouse Anti-Kir2.1 Potassium Channel Monoclonal Antibody (NBP2-12900) at 1:1000 for 2 hours at RT. Secondary Antibody: Sheep Anti-Mouse IgG: HRP for 1 hour at RT.



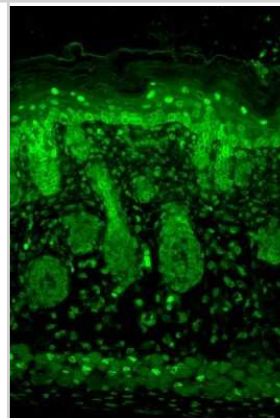
Immunocytochemistry/Immunofluorescence: Kir2.1 Antibody (S112) [NBP2-12900] - Immunocytochemistry/Immunofluorescence analysis using Mouse Anti-Kir2.1 Monoclonal Antibody, Clone S112 (NBP2-12900). Tissue: Neuroblastoma cells (SH-SY5Y). Species: Human. Fixation: 4% PFA for 15 min. Primary Antibody: Mouse Anti-Kir2.1 Monoclonal Antibody (NBP2-12900) at 1:50 for overnight at 4C with slow rocking. Secondary Antibody: AlexaFluor 488 at 1:1000 for 1 hour at RT. Counterstain: Phalloidin-iFluor 647 (red) F-Actin stain; Hoechst (blue) nuclear stain at 1:800, 1.6mM for 20 min at RT. (A) Hoechst (blue) nuclear stain. (B) Phalloidin-iFluor 647 (red) F-Actin stain. (C) Kir2.1 Antibody (D) Composite.



Immunohistochemistry: Kir2.1 Antibody (S112) [NBP2-12900] - Immunohistochemistry analysis using Mouse Anti-Kir2.1 Potassium Channel Monoclonal Antibody, Clone S112 (NBP2-12900). Tissue: hippocampus. Species: Human. Fixation: Bouin's Fixative and paraffin-embedded. Primary Antibody: Mouse Anti-Kir2.1 Potassium Channel Monoclonal Antibody (NBP2-12900) at 1:1000 for 1 hour at RT. Secondary Antibody: FITC Goat Anti-Mouse (green) at 1:50 for 1 hour at RT.



Immunohistochemistry: Kir2.1 Antibody (S112) [NBP2-12900] - Tissue: backskin. Species: Mouse. Fixation: Bouin's Fixative and paraffin-embedded. Primary Antibody: Mouse Anti-Kir2.1 Potassium Channel Monoclonal Antibody at 1:100 for 1 hour at RT. Secondary Antibody: FITC Goat Anti-Mouse (green) at 1:50 for 1 hour at RT. Localization: Nuclear expression in the epidermis and hair follicles.



Publications

Klose E, Kuhrt H, Kohen L Et al. Hypoxic and osmotic expression of Kir2.1 potassium channels in retinal pigment epithelial cells: Contribution to vascular endothelial growth factor expression Experimental eye research 2021-08-21 [PMID: 34425102] (WB, Human, Rat)



Novus Biologicals USA

10730 E. Briarwood Avenue
Centennial, CO 80112
USA
Phone: 303.730.1950
Toll Free: 1.888.506.6887
Fax: 303.730.1966
nb-customerservice@bio-techne.com

Bio-Techne Canada

21 Canmotor Ave
Toronto, ON M8Z 4E6
Canada
Phone: 905.827.6400
Toll Free: 855.668.8722
Fax: 905.827.6402
canada.inquires@bio-techne.com

Bio-Techne Ltd

19 Barton Lane
Abingdon Science Park
Abingdon, OX14 3NB, United Kingdom
Phone: (44) (0) 1235 529449
Free Phone: 0800 37 34 15
Fax: (44) (0) 1235 533420
info.EMEA@bio-techne.com

General Contact Information

www.novusbio.com
Technical Support: nb-technical@bio-techne.com
Orders: nb-customerservice@bio-techne.com
General: novus@novusbio.com

Products Related to NBP2-12900

NBP2-33376H	Blue Marker Antibody (6F4-F6) [HRP]
HAF007	Goat anti-Mouse IgG Secondary Antibody [HRP]
NB7539	Goat anti-Mouse IgG (H+L) Secondary Antibody [HRP]
NBP1-97005-0.5mg	Mouse IgG1 Isotype Control (MG1)

Limitations

This product is for research use only and is not approved for use in humans or in clinical diagnosis. Primary Antibodies are guaranteed for 1 year from date of receipt.

For more information on our 100% guarantee, please visit www.novusbio.com/guarantee

Earn gift cards/discounts by submitting a review: www.novusbio.com/reviews/submit/NBP2-12900

Earn gift cards/discounts by submitting a publication using this product:
www.novusbio.com/publications

