

# Product Datasheet

## KDEL1 Antibody (KR-10) - BSA Free NBP2-12873-100ug

Unit Size: 100 ug

Store at 4C short term. Aliquot and store at -20C long term. Avoid freeze-thaw cycles.

[www.novusbio.com](http://www.novusbio.com)



[technical@novusbio.com](mailto:technical@novusbio.com)

**Reviews: 1 Publications: 1**

Protocols, Publications, Related Products, Reviews, Research Tools and Images at:  
[www.novusbio.com/NBP2-12873](http://www.novusbio.com/NBP2-12873)

Updated 9/9/2025 v.20.1

Earn rewards for product  
reviews and publications.

Submit a publication at [www.novusbio.com/publications](http://www.novusbio.com/publications)

Submit a review at [www.novusbio.com/reviews/destination/NBP2-12873](http://www.novusbio.com/reviews/destination/NBP2-12873)



**NBP2-12873-100ug**

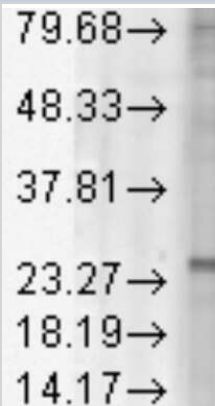
KDELRL1 Antibody (KR-10) - BSA Free

Product Information	
Unit Size	100 ug
Concentration	1 mg/ml
Storage	Store at 4C short term. Aliquot and store at -20C long term. Avoid freeze-thaw cycles.
Clonality	Monoclonal
Clone	KR-10
Preservative	0.09% Sodium Azide
Isotype	IgG1
Purity	Protein G purified
Buffer	PBS (pH 7.2), 50% Glycerol
Product Description	
Description	Novus Biologicals Mouse KDELRL1 Antibody (KR-10) - BSA Free (NBP2-12873) is a monoclonal antibody validated for use in IHC, WB, ICC/IF and IP. Anti-KDELRL1 Antibody: Cited in 1 publication. All Novus Biologicals antibodies are covered by our 100% guarantee.
Host	Mouse
Gene ID	10945
Gene Symbol	KDELRL1
Species	Human, Mouse, Rat, Porcine, Bovine, Canine, Chicken, Drosophila, Hamster, Mammal, Monkey, Rabbit, Sheep, Xenopus
Reactivity Notes	Use in Mammal reported in scientific literature (PMID:31653700).
Specificity/Sensitivity	Detects approx 25kDa.
Immunogen	A 21 residue synthetic peptide (amino acids 192-212) based on the bovine KDEL receptor and the peptide coupled to KLH
Product Application Details	
Applications	Western Blot, Immunohistochemistry-Paraffin, Immunocytochemistry/Immunofluorescence, Immunohistochemistry, Immunoprecipitation
Recommended Dilutions	Western Blot 1:1000, Immunohistochemistry, Immunocytochemistry/Immunofluorescence 1:1000, Immunoprecipitation, Immunohistochemistry-Paraffin 1:10-1:500
Application Notes	1 ug/ml was sufficient for detection of KDEL receptor in 20 ug monkey Vero cell lysate by colorimetric immunoblot analysis using Goat Anti-Mouse IgG:AP as the secondary.

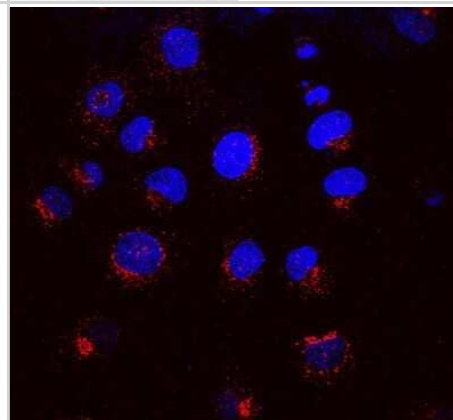


## Images

Western Blot: KDELR1 Antibody (KR-10) [NBP2-12873] - analysis of Rat tissue lysate showing detection of KDEL Receptor protein using Mouse Anti-KDEL Receptor Monoclonal Antibody, Clone KR-10 . Load: 15 ug protein. Block: 1.5% BSA for 30 minutes at RT. Primary Antibody: Mouse Anti-KDEL Receptor Monoclonal Antibody at 1:1000 for 2 hours at RT. Secondary Antibody: Sheep Anti-Mouse IgG: HRP for 1 hour at RT.



Immunocytochemistry/Immunofluorescence: KDELR1 Antibody (KR-10) [NBP2-12873] - Immunocytochemistry/Immunofluorescence analysis using Mouse Anti-KDEL1 Monoclonal Antibody, Clone KR-10 (NBP2-12873). Tissue: NRK cells. Species: Rat. Primary Antibody: Mouse Anti-KDEL1 Monoclonal Antibody (NBP2-12873) at 1:1000. Secondary Antibody: APC Goat Anti-Mouse (red). Counterstain: DAPI (blue) nuclear stain. KR-10 staining red; DAPI staining blue. Merged images. Courtesy of: Institute of Mol. and Cell Bio, Singapore.



## Publications

Bikard Y, Viviano J, Orr MN et al. The KDEL Receptor has a role in the Biogenesis and Trafficking of the Epithelial Sodium Channel (ENaC) J. Biol. Chem. 2019-10-25 [PMID: 31653700] (WB, Mammal)



### **Novus Biologicals USA**

10730 E. Briarwood Avenue  
Centennial, CO 80112  
USA  
Phone: 303.730.1950  
Toll Free: 1.888.506.6887  
Fax: 303.730.1966  
nb-customerservice@bio-techne.com

### **Bio-Techne Canada**

21 Canmotor Ave  
Toronto, ON M8Z 4E6  
Canada  
Phone: 905.827.6400  
Toll Free: 855.668.8722  
Fax: 905.827.6402  
canada.inquires@bio-techne.com

### **Bio-Techne Ltd**

19 Barton Lane  
Abingdon Science Park  
Abingdon, OX14 3NB, United Kingdom  
Phone: (44) (0) 1235 529449  
Free Phone: 0800 37 34 15  
Fax: (44) (0) 1235 533420  
info.EMEA@bio-techne.com

### **General Contact Information**

www.novusbio.com  
Technical Support: nb-technical@bio-techne.com  
Orders: nb-customerservice@bio-techne.com  
General: novus@novusbio.com

### **Products Related to NBP2-12873-100ug**

---

NBP2-33376H	Blue Marker Antibody (6F4-F6) [HRP]
HAF007	Goat anti-Mouse IgG Secondary Antibody [HRP]
NB7539	Goat anti-Mouse IgG (H+L) Secondary Antibody [HRP]
NBP1-97005-0.5mg	Mouse IgG1 Isotype Control (MG1)

---

### **Limitations**

This product is for research use only and is not approved for use in humans or in clinical diagnosis. Primary Antibodies are guaranteed for 1 year from date of receipt.

For more information on our 100% guarantee, please visit [www.novusbio.com/guarantee](http://www.novusbio.com/guarantee)

Earn gift cards/discounts by submitting a review: [www.novusbio.com/reviews/submit/NBP2-12873](http://www.novusbio.com/reviews/submit/NBP2-12873)

Earn gift cards/discounts by submitting a publication using this product:  
[www.novusbio.com/publications](http://www.novusbio.com/publications)

