

# Product Datasheet

## CCRL2/CRAM-A/B Antibody (MM0158-5A15) - Azide and BSA Free NBP2-12137

Unit Size: 0.1 mg

Store at 4C short term. Aliquot and store at -20C long term. Avoid freeze-thaw cycles.

[www.novusbio.com](http://www.novusbio.com)



[technical@novusbio.com](mailto:technical@novusbio.com)

Protocols, Publications, Related Products, Reviews, Research Tools and Images at:  
[www.novusbio.com/NBP2-12137](http://www.novusbio.com/NBP2-12137)

Updated 9/9/2025 v.20.1

Earn rewards for product reviews and publications.

Submit a publication at [www.novusbio.com/publications](http://www.novusbio.com/publications)

Submit a review at [www.novusbio.com/reviews/destination/NBP2-12137](http://www.novusbio.com/reviews/destination/NBP2-12137)



**NBP2-12137**

CCRL2/CRAM-A/B Antibody (MM0158-5A15) - Azide and BSA Free

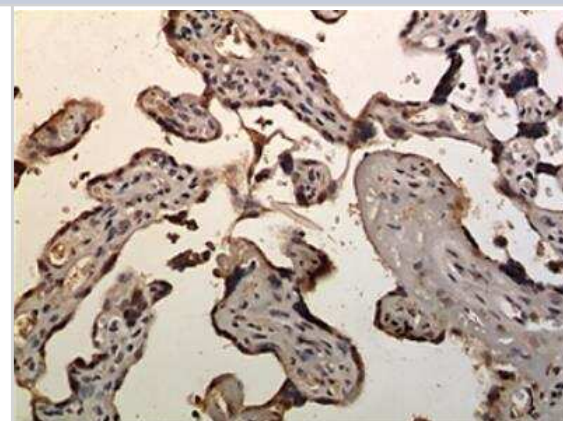
Product Information	
Unit Size	0.1 mg
Concentration	LYOPH mg/ml
Storage	Store at 4C short term. Aliquot and store at -20C long term. Avoid freeze-thaw cycles.
Clonality	Monoclonal
Clone	MM0158-5A15
Preservative	No Preservative
Reconstitution Instructions	Reconstitute with sterilized PBS to a final concentration of 0.5 mg/ml.
Isotype	IgG2
Purity	Protein G purified
Buffer	Lyophilized from a 0.2 um filtered solution in PBS. 0.025 mg size is provided in liquid form, PBS

Product Description	
Description	Novus Biologicals Mouse CCRL2/CRAM-A/B Antibody (MM0158-5A15) - Azide and BSA Free (NBP2-12137) is a monoclonal antibody validated for use in IHC and Flow. All Novus Biologicals antibodies are covered by our 100% guarantee.
Host	Mouse
Gene ID	9034
Gene Symbol	CCRL2
Species	Human
Specificity/Sensitivity	Detects both human CRAM-A and CRAM-B isoforms.
Immunogen	Human recombinant CCRL2/CRAM-A/B

Product Application Details	
Applications	Immunohistochemistry-Paraffin, Flow Cytometry, Immunohistochemistry, CyTOF-ready
Recommended Dilutions	Flow Cytometry 1:10-1:1000, Immunohistochemistry 1:50-1:100, Immunohistochemistry-Paraffin 1:10-1:500, CyTOF-ready
Application Notes	This antibody is Cytof ready.

**Images**

Immunohistochemistry-Paraffin: CCRL2/CRAM-A/B Antibody (MM0158-5A15) [NBP2-12137] - 10% Buffer formalin fixed and paraffine embedded human placental tissue section (4um) is subjected IHC staining using NBP2-12137. Tissue section was pretreated in citric buffer (pH 6.0) with microwave for antigen retrieval before IHC is applied.





### **Novus Biologicals USA**

10730 E. Briarwood Avenue  
Centennial, CO 80112  
USA  
Phone: 303.730.1950  
Toll Free: 1.888.506.6887  
Fax: 303.730.1966  
nb-customerservice@bio-techne.com

### **Bio-Techne Canada**

21 Canmotor Ave  
Toronto, ON M8Z 4E6  
Canada  
Phone: 905.827.6400  
Toll Free: 855.668.8722  
Fax: 905.827.6402  
canada.inquires@bio-techne.com

### **Bio-Techne Ltd**

19 Barton Lane  
Abingdon Science Park  
Abingdon, OX14 3NB, United Kingdom  
Phone: (44) (0) 1235 529449  
Free Phone: 0800 37 34 15  
Fax: (44) (0) 1235 533420  
info.EMEA@bio-techne.com

### **General Contact Information**

www.novusbio.com  
Technical Support: nb-technical@bio-techne.com  
Orders: nb-customerservice@bio-techne.com  
General: novus@novusbio.com

### **Products Related to NBP2-12137**

---

HAF007	Goat anti-Mouse IgG Secondary Antibody [HRP]
NB7539	Goat anti-Mouse IgG (H+L) Secondary Antibody [HRP]
NBP2-12137UV	CCRL2/CRAM-A/B Antibody (MM0158-5A15) [DyLight 350]
NBP1-85588PEP	CCRL2/CRAM-A/B Recombinant Protein Antigen

---

### **Limitations**

This product is for research use only and is not approved for use in humans or in clinical diagnosis. Primary Antibodies are guaranteed for 1 year from date of receipt.

For more information on our 100% guarantee, please visit [www.novusbio.com/guarantee](http://www.novusbio.com/guarantee)

Earn gift cards/discounts by submitting a review: [www.novusbio.com/reviews/submit/NBP2-12137](http://www.novusbio.com/reviews/submit/NBP2-12137)

Earn gift cards/discounts by submitting a publication using this product:  
[www.novusbio.com/publications](http://www.novusbio.com/publications)

