

Product Datasheet

CCL21/6Ckine Antibody (RM0174-10K10) - Azide and BSA Free

NBP2-12104-0.025mg

Unit Size: 0.025 mg

Store at 4C short term. Aliquot and store at -20C long term. Avoid freeze-thaw cycles.

www.novusbio.com



technical@novusbio.com

Protocols, Publications, Related Products, Reviews, Research Tools and Images at:

www.novusbio.com/NBP2-12104

Updated 9/9/2025 v.20.1

Earn rewards for product reviews and publications.

Submit a publication at www.novusbio.com/publications

Submit a review at www.novusbio.com/reviews/destination/NBP2-12104



NBP2-12104-0.025mg

CCL21/6Ckine Antibody (RM0174-10K10) - Azide and BSA Free

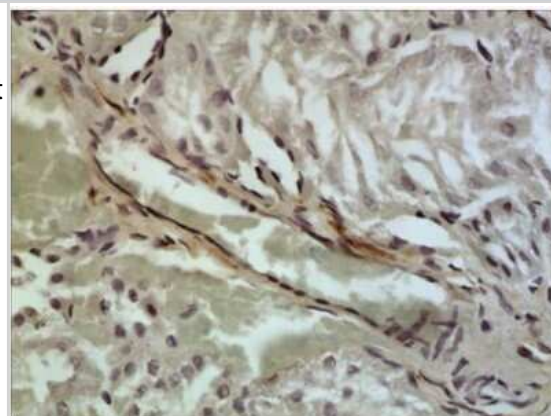
Product Information	
Unit Size	0.025 mg
Concentration	LYOPH mg/ml
Storage	Store at 4C short term. Aliquot and store at -20C long term. Avoid freeze-thaw cycles.
Clonality	Monoclonal
Clone	RM0174-10K10
Preservative	No Preservative
Reconstitution Instructions	Reconstitute with sterilized PBS to a final concentration of 0.5 mg/ml.
Isotype	IgG2
Purity	Protein A or G purified
Buffer	Lyophilized from a 0.2 um filtered solution in PBS. 0.025 mg size is provided in liquid form, PBS

Product Description	
Description	Novus Biologicals Rat CCL21/6Ckine Antibody (RM0174-10K10) - Azide and BSA Free (NBP2-12104) is a monoclonal antibody validated for use in IHC and WB. All Novus Biologicals antibodies are covered by our 100% guarantee.
Host	Rat
Gene ID	6366
Gene Symbol	CCL21
Species	Mouse
Immunogen	Mouse recombinant CCL21/6Ckine

Product Application Details	
Applications	Western Blot, Immunohistochemistry-Paraffin, Immunohistochemistry
Recommended Dilutions	Western Blot 1:500-1:1000, Immunohistochemistry 1:50-1:100, Immunohistochemistry-Paraffin
Application Notes	For use in IHC-P, the recommended Antigen Retrieval method is as follows: Proteinase K at 20ug/ml in PBS for 10-30 min at RT. This needs to be optimized by the end-user due to variation in fixing conditions.

Images

Immunohistochemistry-Paraffin: CCL21/6Ckine Antibody (RM0174-10K10) [NBP2-12104] - The Kidney tissue samples from the Folic Acid induced kidney injury model were fixed using 4% PFA at 4C for overnight and embedded in paraffin. 4um section was subjected to IHC with NBP2-12104





Novus Biologicals USA

10730 E. Briarwood Avenue
Centennial, CO 80112
USA
Phone: 303.730.1950
Toll Free: 1.888.506.6887
Fax: 303.730.1966
nb-customerservice@bio-techne.com

Bio-Techne Canada

21 Canmotor Ave
Toronto, ON M8Z 4E6
Canada
Phone: 905.827.6400
Toll Free: 855.668.8722
Fax: 905.827.6402
canada.inquires@bio-techne.com

Bio-Techne Ltd

19 Barton Lane
Abingdon Science Park
Abingdon, OX14 3NB, United Kingdom
Phone: (44) (0) 1235 529449
Free Phone: 0800 37 34 15
Fax: (44) (0) 1235 533420
info.EMEA@bio-techne.com

General Contact Information

www.novusbio.com
Technical Support: nb-technical@bio-techne.com
Orders: nb-customerservice@bio-techne.com
General: novus@novusbio.com

Products Related to NBP2-12104-0.025mg

NBP2-33376H	Blue Marker Antibody (6F4-F6) [HRP]
HAF005	Goat anti-Rat IgG Secondary Antibody [HRP]
NB7115	Goat anti-Rat IgG (H+L) Secondary Antibody [HRP]
NBP2-35002-5ug	Recombinant Human CCL21/6Ckine Protein

Limitations

This product is for research use only and is not approved for use in humans or in clinical diagnosis. Primary Antibodies are guaranteed for 1 year from date of receipt.

For more information on our 100% guarantee, please visit www.novusbio.com/guarantee

Earn gift cards/discounts by submitting a review: www.novusbio.com/reviews/submit/NBP2-12104

Earn gift cards/discounts by submitting a publication using this product:
www.novusbio.com/publications

