

Product Datasheet

ETS1 associated protein II Antibody NBP2-11491-0.05mg

Unit Size: 0.05 mg

Store at 4C short term. Aliquot and store at -20C long term. Avoid freeze-thaw cycles.

www.novusbio.com



technical@novusbio.com

Protocols, Publications, Related Products, Reviews, Research Tools and Images at:
www.novusbio.com/NBP2-11491

Updated 9/9/2025 v.20.1

Earn rewards for product
reviews and publications.

Submit a publication at www.novusbio.com/publications

Submit a review at www.novusbio.com/reviews/destination/NBP2-11491



NBP2-11491-0.05mg

ETS1 associated protein II Antibody

Product Information	
Unit Size	0.05 mg
Concentration	Please see the vial label for concentration. If unlisted please contact technical services.
Storage	Store at 4C short term. Aliquot and store at -20C long term. Avoid freeze-thaw cycles.
Clonality	Polyclonal
Preservative	0.02% Sodium Azide
Isotype	IgG
Purity	Immunogen affinity purified
Buffer	Tris/Glycine buffer, pH 7.4-7.8, HEPES,BSA 0.5%, glycerol 30%.

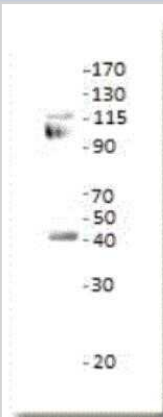
Product Description	
Description	Novus Biologicals Rabbit ETS1 associated protein II Antibody (NBP2-11491) is a polyclonal antibody validated for use in IHC, WB, ELISA and IP. All Novus Biologicals antibodies are covered by our 100% guarantee.
Host	Rabbit
Gene ID	51567
Gene Symbol	TDP2
Species	Human, Mouse, Rat
Reactivity Notes	Rat, Mouse and Human
Specificity/Sensitivity	The antibody labels a strong band of TDP2 of 45kDa in TDP12 samples and in several cell lines. The antibody also labels a diffuse band of around 95 and 115kDa, the identity of these bands is not known but may represent TDP2 splice variants.
Immunogen	The synthetic peptide taken from human Tyrosyl-DNAphosphodiesterase (TDP2) protein corresponding to amino acids spanning 335-356. The peptide was conserved in several other species. The selected peptide was post-synthetically modified to achieve highest antigenicity before coupling to carrier protein using hetero bifunctional cross linker for immunogen preparation

Product Application Details	
Applications	Western Blot, ELISA, Immunohistochemistry, Immunoprecipitation
Recommended Dilutions	Western Blot 1:500, ELISA 1:500, Immunohistochemistry, Immunoprecipitation
Application Notes	TDP2 antibodies were tested in ELISA and western blotting applications



Images

Western Blot: ETS1 associated protein II Antibody [NBP2-11491] - Analysis using the FITC conjugate of NBP2-11491. Detection of antibody dilution 1:1000 in diluObuffer. Apparent MW is 39 kDa.





Novus Biologicals USA

10730 E. Briarwood Avenue
Centennial, CO 80112
USA
Phone: 303.730.1950
Toll Free: 1.888.506.6887
Fax: 303.730.1966
nb-customerservice@bio-techne.com

Bio-Techne Canada

21 Canmotor Ave
Toronto, ON M8Z 4E6
Canada
Phone: 905.827.6400
Toll Free: 855.668.8722
Fax: 905.827.6402
canada.inquires@bio-techne.com

Bio-Techne Ltd

19 Barton Lane
Abingdon Science Park
Abingdon, OX14 3NB, United Kingdom
Phone: (44) (0) 1235 529449
Free Phone: 0800 37 34 15
Fax: (44) (0) 1235 533420
info.EMEA@bio-techne.com

General Contact Information

www.novusbio.com
Technical Support: nb-technical@bio-techne.com
Orders: nb-customerservice@bio-techne.com
General: novus@novusbio.com

Products Related to NBP2-11491-0.05mg

NBP2-11491PEP	ETS1 associated protein II Antibody Blocking Peptide
NBP2-33376H	Blue Marker Antibody (6F4-F6) [HRP]
HAF008	Goat anti-Rabbit IgG Secondary Antibody [HRP]
NB7160	Goat anti-Rabbit IgG (H+L) Secondary Antibody [HRP]
NBP2-24891	Rabbit IgG Isotype Control

Limitations

This product is for research use only and is not approved for use in humans or in clinical diagnosis. Primary Antibodies are guaranteed for 1 year from date of receipt.

For more information on our 100% guarantee, please visit www.novusbio.com/guarantee

Earn gift cards/discounts by submitting a review: www.novusbio.com/reviews/submit/NBP2-11491

Earn gift cards/discounts by submitting a publication using this product:
www.novusbio.com/publications

