

Product Datasheet

LMAN1 Antibody (OT11A8)

NBP2-03381

Unit Size: 0.1 ml

Store at -20C. Avoid freeze-thaw cycles.

www.novusbio.com



technical@novusbio.com

Publications: 5

Protocols, Publications, Related Products, Reviews, Research Tools and Images at:
www.novusbio.com/NBP2-03381

Updated 9/9/2025 v.20.1

Earn rewards for product reviews and publications.

Submit a publication at www.novusbio.com/publications

Submit a review at www.novusbio.com/reviews/destination/NBP2-03381



NBP2-03381

LMAN1 Antibody (OTI1A8)

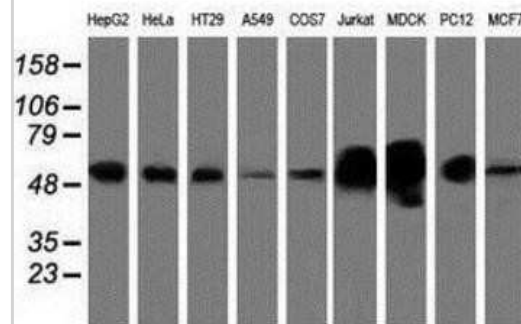
Product Information	
Unit Size	0.1 ml
Concentration	1 mg/ml
Storage	Store at -20C. Avoid freeze-thaw cycles.
Clonality	Monoclonal
Clone	OTI1A8
Preservative	0.02% Sodium Azide
Isotype	IgG1
Purity	Immunogen affinity purified
Buffer	PBS (pH 7.3), 1.0% BSA and 50% Glycerol
Target Molecular Weight	54.2 kDa

Product Description	
Description	Novus Biologicals Mouse LMAN1 Antibody (OTI1A8) (NBP2-03381) is a monoclonal antibody validated for use in IHC, WB, Flow and ICC/IF. Anti-LMAN1 Antibody: Cited in 5 publications. All Novus Biologicals antibodies are covered by our 100% guarantee.
Host	Mouse
Gene ID	3998
Gene Symbol	LMAN1
Species	Human, Mouse, Rat, Canine, Primate, Monkey
Reactivity Notes	Monkey reactivity reported in scientific literature (PMID: 24891604). Please note that this antibody is reactive to Mouse and derived from the same host, Mouse. Mouse-On-Mouse blocking reagent may be needed for IHC and ICC experiments to reduce high background signal. You can find these reagents under catalog numbers PK-2200-NB and MP-2400-NB. Please contact Technical Support if you have any questions.
Immunogen	Full length human recombinant protein of human LMAN1 (NP_005561) produced in HEK293T cell.

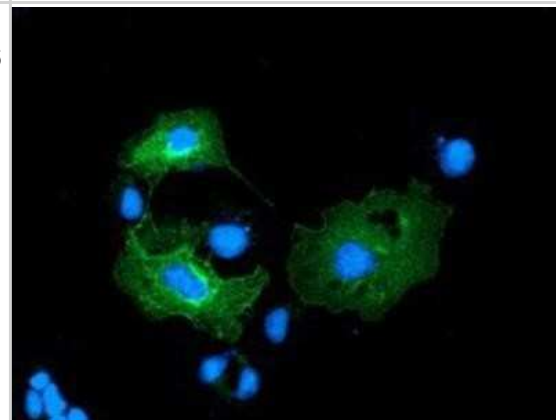
Product Application Details	
Applications	Western Blot, Immunohistochemistry-Paraffin, Flow Cytometry, Immunocytochemistry/ Immunofluorescence, Immunohistochemistry
Recommended Dilutions	Western Blot 1:200-500, Flow Cytometry 1:100, Immunohistochemistry 1:150, Immunocytochemistry/ Immunofluorescence 1:100, Immunohistochemistry-Paraffin 1:150

Images

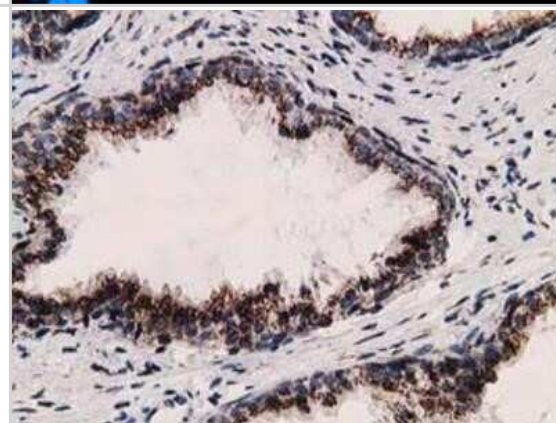
Western Blot: LMAN1 Antibody (OT11A8) [NBP2-03381] - Analysis of extracts (35ug) from 9 different cell lines by using anti-LMAN1 monoclonal antibody.



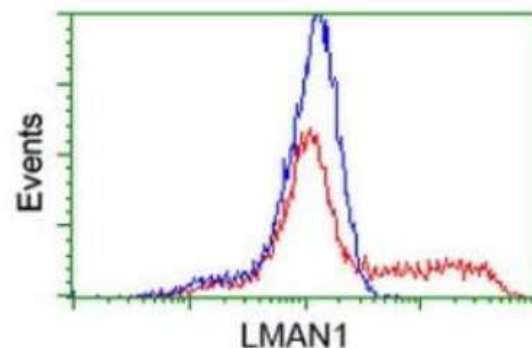
Immunocytochemistry/Immunofluorescence: LMAN1 Antibody (OT11A8) [NBP2-03381] - Staining of COS7 cells transiently transfected by pCMV6-ENTRY LMAN1.



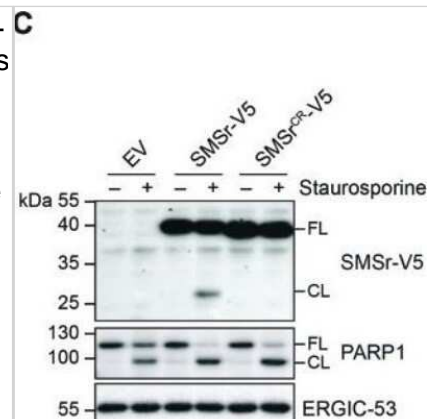
Immunohistochemistry-Paraffin: LMAN1 Antibody (OT11A8) [NBP2-03381] - Staining of paraffin-embedded Human prostate tissue using anti-LMAN1 mouse monoclonal antibody.



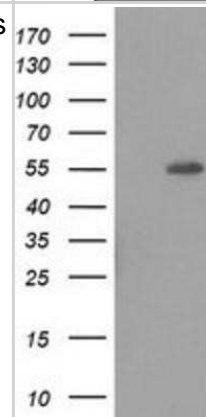
Flow Cytometry: LMAN1 Antibody (OT11A8) [NBP2-03381] - HEK293T cells transfected with either RC207088 overexpress plasmid (Red) or empty vector control plasmid (Blue) were immunostained by anti-LMAN1 antibody and then analyzed by flow cytometry.



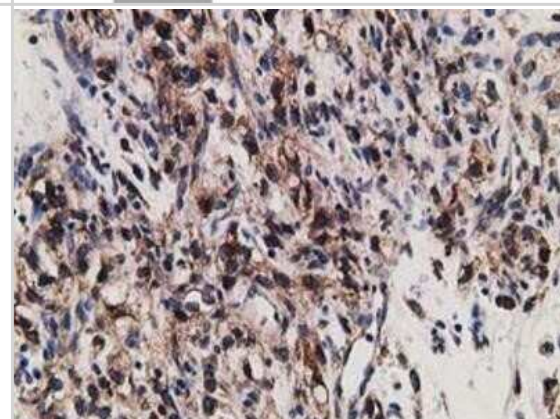
Western Blot: LMAN1 Antibody (OT11A8) [NBP2-03381] - Staurosporine-induced cleavage of SMSr is sensitive to caspase-6 inhibitors. HeLa cells stably transduced with EV, SMSr-V5, and SMSrCR-V5 were treated with 1 μ g/ml staurosporine for 6 h, lysed and subjected to immunoblot analysis using anti-V5, anti-PARP1, and anti-ERGIC-53 antibodies; FL, full length; CL, cleaved. Image collected and cropped by CiteAb from the following publication (<https://bioscirep.org/lookup/doi/10.1042/BSR20170867>), licensed under a CC-BY license.



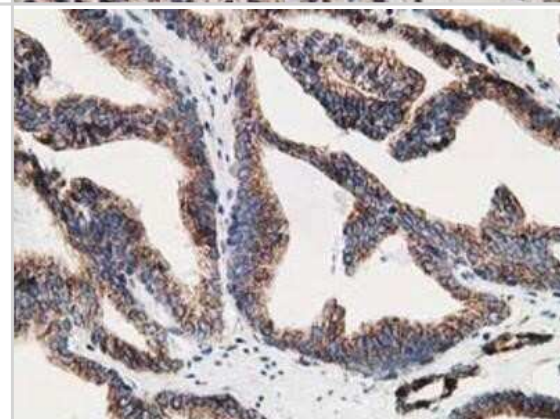
Western Blot: LMAN1 Antibody (OT11A8) [NBP2-03381] - HEK293T cells were transfected with the pCMV6-ENTRY control (Left lane) or pCMV6-ENTRY LMAN1 (Right lane) cDNA for 48 hrs and lysed. Equivalent amounts of cell lysates (5 μ g per lane) were separated by SDS-PAGE and immunoblotted with anti-LMAN1.



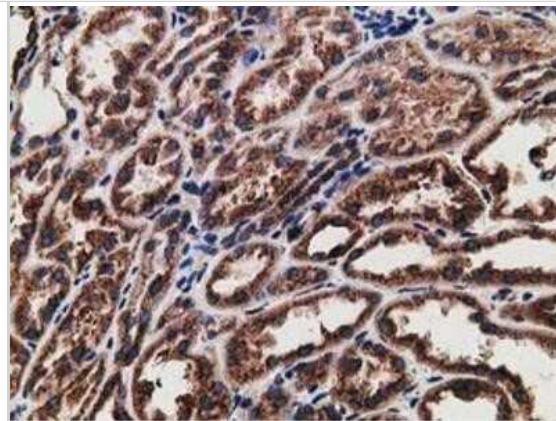
Immunohistochemistry-Paraffin: LMAN1 Antibody (OT11A8) [NBP2-03381] - Staining of paraffin-embedded Carcinoma of Human kidney tissue using anti-LMAN1 mouse monoclonal antibody.



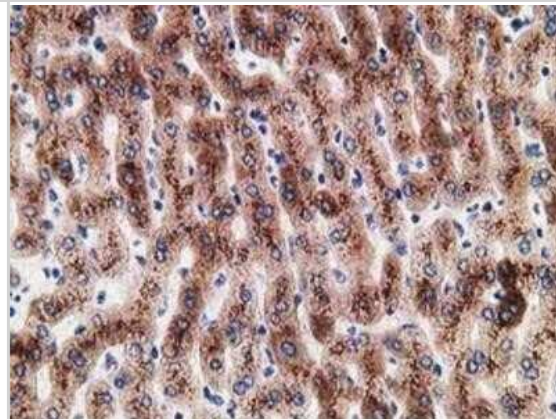
Immunohistochemistry-Paraffin: LMAN1 Antibody (OT11A8) [NBP2-03381] - Staining of paraffin-embedded Carcinoma of Human prostate tissue using anti-LMAN1 mouse monoclonal antibody.



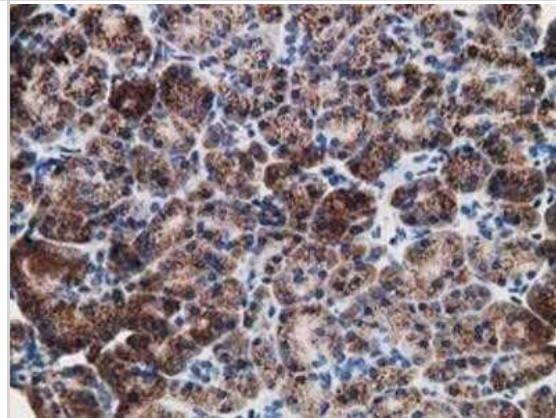
Immunohistochemistry-Paraffin: LMAN1 Antibody (OT11A8) [NBP2-03381] - Staining of paraffin-embedded Human Kidney tissue using anti-LMAN1 mouse monoclonal antibody.



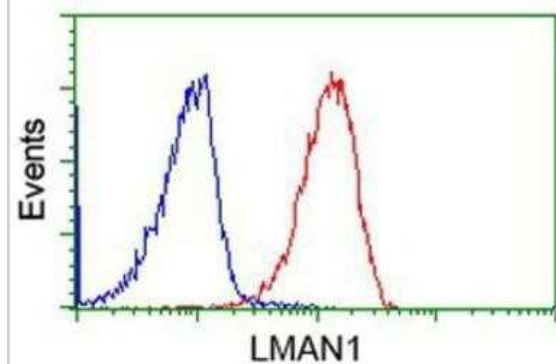
Immunohistochemistry-Paraffin: LMAN1 Antibody (OT11A8) [NBP2-03381] - Staining of paraffin-embedded Human liver tissue using anti-LMAN1 mouse monoclonal antibody.



Immunohistochemistry-Paraffin: LMAN1 Antibody (OT11A8) [NBP2-03381] - Staining of paraffin-embedded Human pancreas tissue using anti-LMAN1 mouse monoclonal antibody.



Flow Cytometry: LMAN1 Antibody (OT11A8) [NBP2-03381] - Analysis of Jurkat cells, using anti-LMAN1 antibody, (Red), compared to a nonspecific negative control antibody (Blue).



LMAN1 Antibody (OT11A8)[NBP2-03381] Simple Western analysis of endogenous protein GALE from HepG2 lysates (0.2 mg/mL) using GALE Mouse Monoclonal Antibody . The virtual lane view (left) shows the target (as indicated) at 1:50 dilution of primary antibody. The corresponding electropherogram view (right) plots chemiluminescence by molecular weight along the capillary at a 1:50 dilution of primary antibody. This experiment was performed under reducing conditions on the Jess Simple Western instrument from ProteinSimple, a Bio-Techne brand, using the 12-230 kDa Separation Module.



Publications

Caielli S, Balasubramanian P, Rodriguez-Alcazar J, Balaji U et al. Type I IFN drives unconventional IL-1 β secretion in lupus monocytes Immunity 2024-10-08 [PMID: 39378884]

Caielli S, Balasubramanian P, Rodriguez-Alcazar J et al. An unconventional mechanism of IL-1 β secretion that requires Type I IFN in lupus monocytes bioRxiv : the preprint server for biology 2023-08-03 [PMID: 37577613]

Miller MH, Swaby LG, Vailoces VS et al. LMAN1 is a receptor for house dust mite allergens Cell reports 2023-03-03 [PMID: 36870056] (FLOW, Mouse)

Cabukusta B, Nettebrock NT, Kol M et al. Ceramide phosphoethanolamine synthase SMSr is a target of caspase-6 during apoptotic cell death Biosci. Rep. 2017-08-31 [PMID: 28659495] (WB, Human)

Gerondopoulos A, Bastos RN, Yoshimura S et al. Rab18 and a Rab18 GEF complex are required for normal ER structure. J. Cell Biol. 2014-06-09 [PMID: 24891604] (ICC/IF, Monkey)

Details:

COS7 cells expressing GFP-Rab18 immunostained for Rab3GAP1 and markers for COP I (beta-COP), COP II (Sec31), ERGIC-53, and LAMP1 (Figure 3d)





Novus Biologicals USA

10730 E. Briarwood Avenue
Centennial, CO 80112
USA
Phone: 303.730.1950
Toll Free: 1.888.506.6887
Fax: 303.730.1966
nb-customerservice@bio-techne.com

Bio-Techne Canada

21 Canmotor Ave
Toronto, ON M8Z 4E6
Canada
Phone: 905.827.6400
Toll Free: 855.668.8722
Fax: 905.827.6402
canada.inquires@bio-techne.com

Bio-Techne Ltd

19 Barton Lane
Abingdon Science Park
Abingdon, OX14 3NB, United Kingdom
Phone: (44) (0) 1235 529449
Free Phone: 0800 37 34 15
Fax: (44) (0) 1235 533420
info.EMEA@bio-techne.com

General Contact Information

www.novusbio.com
Technical Support: nb-technical@bio-techne.com
Orders: nb-customerservice@bio-techne.com
General: novus@novusbio.com

Products Related to NBP2-03381

NBP2-33376H	Blue Marker Antibody (6F4-F6) [HRP]
HAF007	Goat anti-Mouse IgG Secondary Antibody [HRP]
NB7539	Goat anti-Mouse IgG (H+L) Secondary Antibody [HRP]
NBP1-97005-0.5mg	Mouse IgG1 Isotype Control (MG1)

Limitations

This product is for research use only and is not approved for use in humans or in clinical diagnosis. Primary Antibodies are guaranteed for 1 year from date of receipt.

For more information on our 100% guarantee, please visit www.novusbio.com/guarantee

Earn gift cards/discounts by submitting a review: www.novusbio.com/reviews/submit/NBP2-03381

Earn gift cards/discounts by submitting a publication using this product:
www.novusbio.com/publications

