

Product Datasheet

Glutathione Synthetase Antibody (OT11B8) NBP2-03351

Unit Size: 0.1 ml

Store at -20C. Avoid freeze-thaw cycles.

www.novusbio.com



technical@novusbio.com

Publications: 3

Protocols, Publications, Related Products, Reviews, Research Tools and Images at:
www.novusbio.com/NBP2-03351

Updated 9/9/2025 v.20.1

Earn rewards for product
reviews and publications.

Submit a publication at www.novusbio.com/publications

Submit a review at www.novusbio.com/reviews/destination/NBP2-03351



NBP2-03351**Glutathione Synthetase Antibody (OTI1B8)**

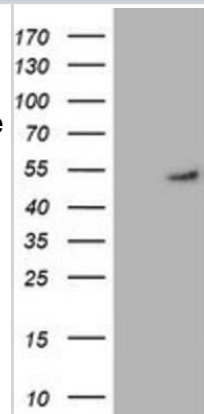
| Product Information | |
|--------------------------------|--|
| Unit Size | 0.1 ml |
| Concentration | 0.51 mg/ml |
| Storage | Store at -20C. Avoid freeze-thaw cycles. |
| Clonality | Monoclonal |
| Clone | OTI1B8 |
| Preservative | 0.02% Sodium Azide |
| Isotype | IgG1 |
| Purity | Immunogen affinity purified |
| Buffer | PBS (pH 7.3), 1.0% BSA and 50% Glycerol |
| Target Molecular Weight | 52.2 kDa |

| Product Description | |
|----------------------------|---|
| Description | Novus Biologicals Mouse Glutathione Synthetase Antibody (OTI1B8) (NBP2-03351) is a monoclonal antibody validated for use in IHC, WB and Flow. Anti-Glutathione Synthetase Antibody: Cited in 3 publications. All Novus Biologicals antibodies are covered by our 100% guarantee. |
| Host | Mouse |
| Gene ID | 2937 |
| Gene Symbol | GSS |
| Species | Human, Mouse, Rat |
| Reactivity Notes | Please note that this antibody is reactive to Mouse and derived from the same host, Mouse. Mouse-On-Mouse blocking reagent may be needed for IHC and ICC experiments to reduce high background signal. You can find these reagents under catalog numbers PK-2200-NB and MP-2400-NB. Please contact Technical Support if you have any questions. |
| Immunogen | Full length human recombinant protein of human GSS (NP_000169) produced in HEK293T cell. |

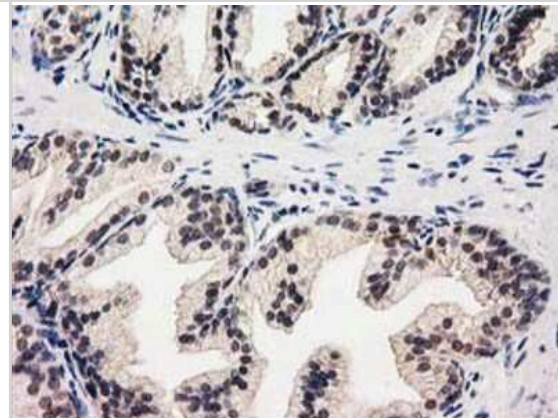
| Product Application Details | |
|------------------------------------|--|
| Applications | Western Blot, Immunohistochemistry-Paraffin, Flow Cytometry, Immunohistochemistry |
| Recommended Dilutions | Western Blot 1:2000, Flow Cytometry 1:100, Immunohistochemistry 1:150, Immunohistochemistry-Paraffin 1:150 |

Images

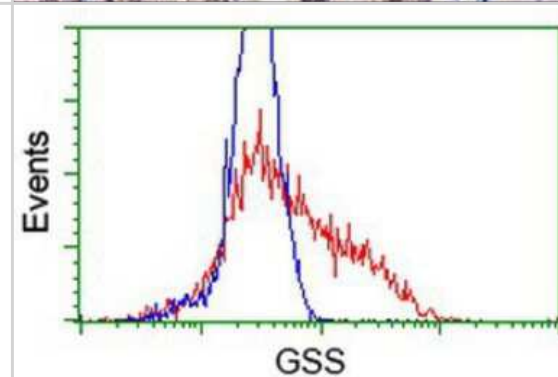
Western Blot: Glutathione Synthetase Antibody (1B8) [NBP2-03351] - HEK293T cells were transfected with the pCMV6-ENTRY control (Left lane) or pCMV6-ENTRY Glutathione Synthetase (Right lane) cDNA for 48 hrs and lysed. Equivalent amounts of cell lysates (5 ug per lane) were separated by SDS-PAGE and immunoblotted with anti-Glutathione Synthetase.



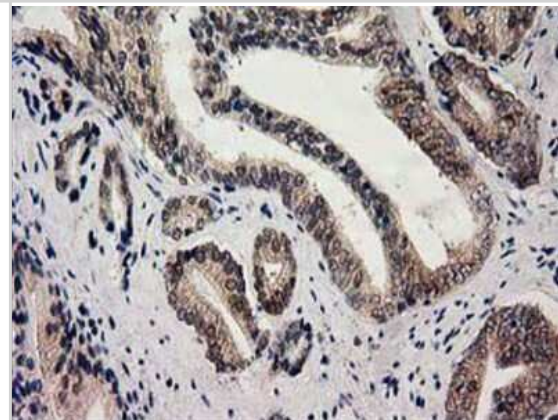
Immunohistochemistry-Paraffin: Glutathione Synthetase Antibody (1B8) [NBP2-03351] Staining of paraffin-embedded Human prostate tissue using anti-Glutathione Synthetase mouse monoclonal antibody.



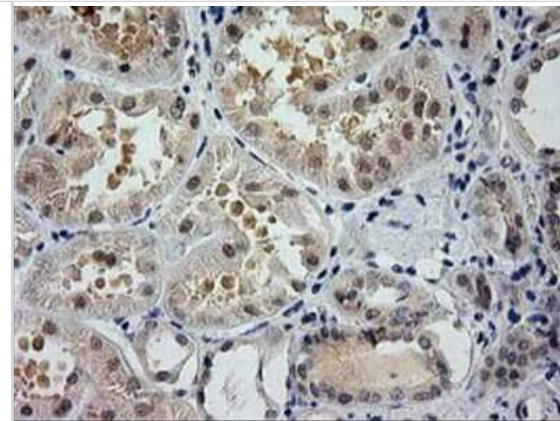
Flow Cytometry: Glutathione Synthetase Antibody (1B8) [NBP2-03351] - HEK293T cells transfected with either overexpression plasmid (Red) or empty vector control plasmid (Blue) were immunostained by anti-Glutathione Synthetase antibody, and then analyzed by flow cytometry.



Immunohistochemistry-Paraffin: Glutathione Synthetase Antibody (1B8) [NBP2-03351] - Staining of paraffin-embedded Carcinoma of Human prostate tissue using anti-Glutathione Synthetase mouse monoclonal antibody.



Immunohistochemistry-Paraffin: Glutathione Synthetase Antibody (1B8) [NBP2-03351] - Staining of paraffin-embedded Human Kidney tissue using anti-Glutathione Synthetase mouse monoclonal antibody.



Publications

Yoon SJ, Combs JA, Falzone A et al. Comprehensive Metabolic Tracing Reveals the Origin and Catabolism of Cysteine in Mammalian Tissues and Tumors *Cancer Research* 2023-05-02 [PMID: 36862034] (Immunohistochemistry, Human)

Kang Y, Mockabee-Macias A, Jiang C et al. Non-canonical glutamate-cysteine ligase activity protects against ferroptosis *Cell Metab* 2020-12-28 [PMID: 33357455]

Kraft AM, Petty HR Spatial locations of certain enzymes and transporters within pre-invasive ductal epithelial cells predict human breast cancer recurrences *Am. J. Physiol., Cell Physiol.* 2020-09-09 [PMID: 32903032] (IF/IHC, Human)



Novus Biologicals USA

10730 E. Briarwood Avenue
Centennial, CO 80112
USA
Phone: 303.730.1950
Toll Free: 1.888.506.6887
Fax: 303.730.1966
nb-customerservice@bio-techne.com

Bio-Techne Canada

21 Canmotor Ave
Toronto, ON M8Z 4E6
Canada
Phone: 905.827.6400
Toll Free: 855.668.8722
Fax: 905.827.6402
canada.inquires@bio-techne.com

Bio-Techne Ltd

19 Barton Lane
Abingdon Science Park
Abingdon, OX14 3NB, United Kingdom
Phone: (44) (0) 1235 529449
Free Phone: 0800 37 34 15
Fax: (44) (0) 1235 533420
info.EMEA@bio-techne.com

General Contact Information

www.novusbio.com
Technical Support: nb-technical@bio-techne.com
Orders: nb-customerservice@bio-techne.com
General: novus@novusbio.com

Products Related to NBP2-03351

| | |
|------------------|--|
| NBP2-33376H | Blue Marker Antibody (6F4-F6) [HRP] |
| HAF007 | Goat anti-Mouse IgG Secondary Antibody [HRP] |
| NB7539 | Goat anti-Mouse IgG (H+L) Secondary Antibody [HRP] |
| NBP1-97005-0.5mg | Mouse IgG1 Isotype Control (MG1) |

Limitations

This product is for research use only and is not approved for use in humans or in clinical diagnosis. Primary Antibodies are guaranteed for 1 year from date of receipt.

For more information on our 100% guarantee, please visit www.novusbio.com/guarantee

Earn gift cards/discounts by submitting a review: www.novusbio.com/reviews/submit/NBP2-03351

Earn gift cards/discounts by submitting a publication using this product:
www.novusbio.com/publications

