

Product Datasheet

SAMHD1 Antibody (OTI3F5)

NBP2-03285

Unit Size: 0.1 ml

Store at -20C. Avoid freeze-thaw cycles.

www.novusbio.com



technical@novusbio.com

Publications: 4

Protocols, Publications, Related Products, Reviews, Research Tools and Images at:
www.novusbio.com/NBP2-03285

Updated 9/9/2025 v.20.1

Earn rewards for product reviews and publications.

Submit a publication at www.novusbio.com/publications

Submit a review at www.novusbio.com/reviews/destination/NBP2-03285



NBP2-03285

SAMHD1 Antibody (OTI3F5)

Product Information	
Unit Size	0.1 ml
Concentration	1 mg/ml
Storage	Store at -20C. Avoid freeze-thaw cycles.
Clonality	Monoclonal
Clone	OTI3F5
Preservative	0.02% Sodium Azide
Isotype	IgG2b
Purity	Immunogen affinity purified
Buffer	PBS (pH 7.3), 1.0% BSA and 50% Glycerol
Target Molecular Weight	72 kDa

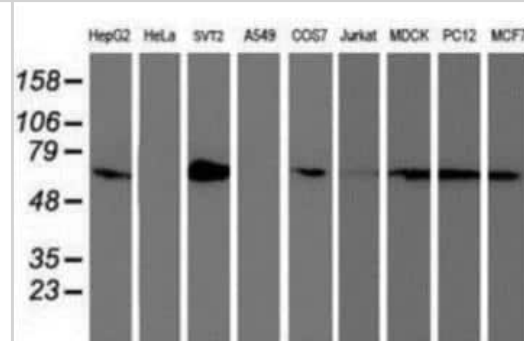
Product Description	
Description	Novus Biologicals Mouse SAMHD1 Antibody (OTI3F5) (NBP2-03285) is a monoclonal antibody validated for use in IHC, WB, Flow and ICC/IF. Anti-SAMHD1 Antibody: Cited in 3 publications. All Novus Biologicals antibodies are covered by our 100% guarantee.
Host	Mouse
Gene ID	25939
Gene Symbol	SAMHD1
Species	Human, Mouse, Rat, Canine, Primate, Monkey
Reactivity Notes	Please note that this antibody is reactive to Mouse and derived from the same host, Mouse. Mouse-On-Mouse blocking reagent may be needed for IHC and ICC experiments to reduce high background signal. You can find these reagents under catalog numbers PK-2200-NB and MP-2400-NB. Please contact Technical Support if you have any questions.
Immunogen	Full length human recombinant protein of human SAMHD1(NP_056289) produced in HEK293T cell.

Product Application Details	
Applications	Western Blot, Immunohistochemistry-Paraffin, Flow Cytometry, Immunocytochemistry/ Immunofluorescence, Immunohistochemistry
Recommended Dilutions	Western Blot 1:200-500, Flow Cytometry 1:100, Immunohistochemistry 1:150, Immunocytochemistry/ Immunofluorescence 1:100, Immunohistochemistry-Paraffin 1:150

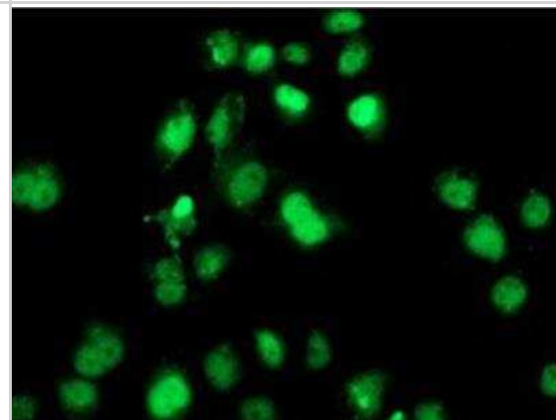


Images

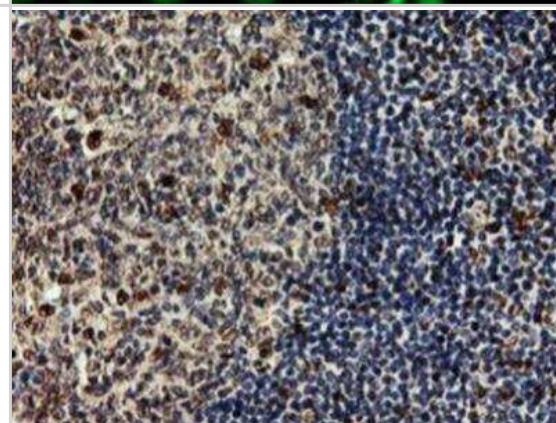
Western Blot: SAMHD1 Antibody (OTI3F5) [NBP2-03285] - Analysis of extracts (35ug) from 9 different cell lines by using anti-SAMHD1 monoclonal antibody.



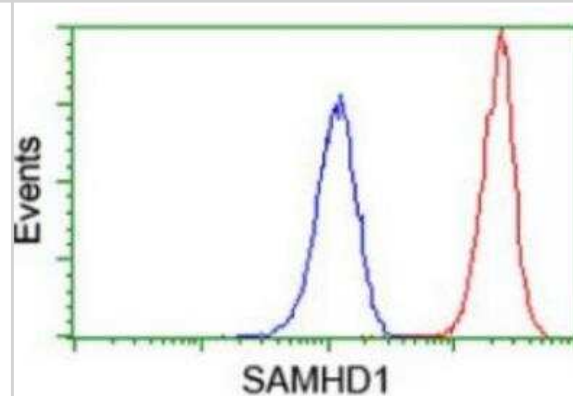
Immunocytochemistry/Immunofluorescence: SAMHD1 Antibody (OTI3F5) [NBP2-03285] - Staining of COS7 cells transiently transfected by pCMV6-ENTRY SAMHD1.



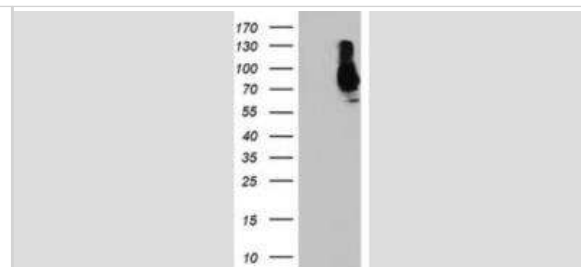
Immunohistochemistry-Paraffin: SAMHD1 Antibody (OTI3F5) [NBP2-03285] - Staining of Human tonsil using anti-SAMHD1 mouse monoclonal antibody.



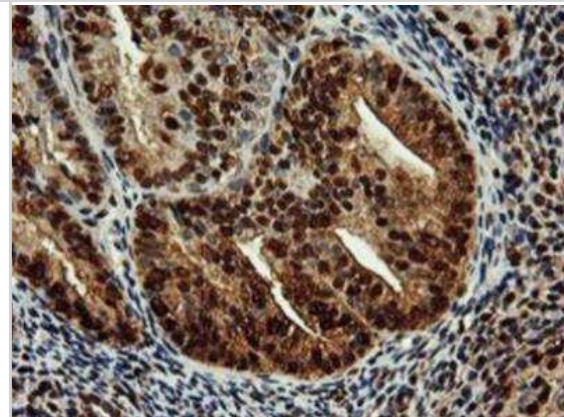
Flow Cytometry: SAMHD1 Antibody (OTI3F5) [NBP2-03285] - Analysis of Jurkat cells, using anti-SAMHD1 antibody,(Red), compared to a nonspecific negative control antibody,(Blue).



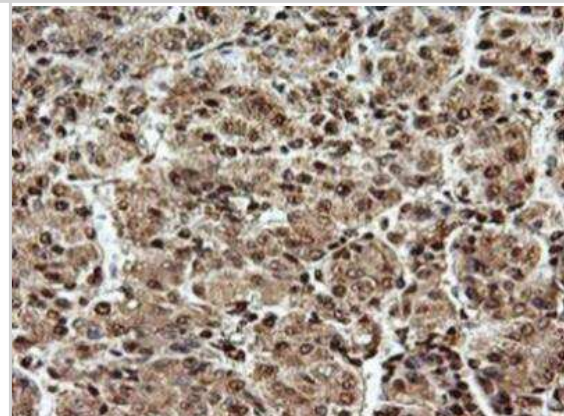
Western Blot: SAMHD1 Antibody (OTI3F5) [NBP2-03285] - HEK293T cells were transfected with the pCMV6-ENTRY control (Left lane) or pCMV6-ENTRY SAMHD1 (Right lane) cDNA for 48 hrs and lysed. Equivalent amounts of cell lysates (5 ug per lane) were separated by SDS-PAGE and immunoblotted with anti-SAMHD1.



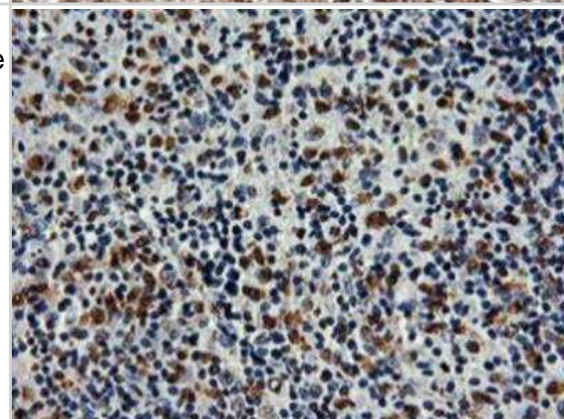
Immunohistochemistry-Paraffin: SAMHD1 Antibody (OTI3F5) [NBP2-03285] - Staining of Adenocarcinoma of Human endometrium tissue using anti-SAMHD1 mouse monoclonal antibody.



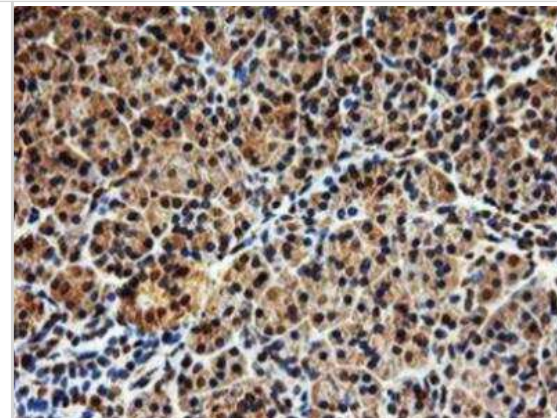
Immunohistochemistry-Paraffin: SAMHD1 Antibody (OTI3F5) [NBP2-03285] - Staining of Carcinoma of Human liver tissue using anti-SAMHD1 mouse monoclonal antibody.



Immunohistochemistry-Paraffin: SAMHD1 Antibody (OTI3F5) [NBP2-03285] - Staining of Human lymphoma tissue using anti-SAMHD1 mouse monoclonal antibody.



Immunohistochemistry-Paraffin: SAMHD1 Antibody (OTI3F5) [NBP2-03285] - Staining of Human pancreas tissue using anti-SAMHD1 mouse monoclonal antibody.



Flow Cytometry: SAMHD1 Antibody (OTI3F5) [NBP2-03285] - Analysis of Hela cells, using anti-SAMHD1 antibody, (Red), compared to a nonspecific negative control antibody (Blue).



Publications

Deutschmann J Regulatory Mechanism of the Innate Restriction Factor SAMHD1 in Herpesviral Infections Thesis 2020-01-01

Businger R, Deutschmann J, Gruska I et al. Human cytomegalovirus overcomes SAMHD1 restriction in macrophages via pUL97 Nat Microbiol 2019-09-23 [PMID: 31548682] (WB, Human)

Deutschmann J, Schneider A, Gruska I et al. A viral kinase counteracts in vivo restriction of murine cytomegalovirus by SAMHD1 Nat Microbiol 2019-09-23 [PMID: 31548683] (WB, Mouse)

Kim YC, Kim KK, Yoon J et al. SAMHD1 Posttranscriptionally Controls the Expression of Foxp3 and Helios in Human T Regulatory Cells J. Immunol. 2018-08-13 [PMID: 30104243] (WB, Human)



Novus Biologicals USA

10730 E. Briarwood Avenue
Centennial, CO 80112
USA
Phone: 303.730.1950
Toll Free: 1.888.506.6887
Fax: 303.730.1966
nb-customerservice@bio-techne.com

Bio-Techne Canada

21 Canmotor Ave
Toronto, ON M8Z 4E6
Canada
Phone: 905.827.6400
Toll Free: 855.668.8722
Fax: 905.827.6402
canada.inquires@bio-techne.com

Bio-Techne Ltd

19 Barton Lane
Abingdon Science Park
Abingdon, OX14 3NB, United Kingdom
Phone: (44) (0) 1235 529449
Free Phone: 0800 37 34 15
Fax: (44) (0) 1235 533420
info.EMEA@bio-techne.com

General Contact Information

www.novusbio.com
Technical Support: nb-technical@bio-techne.com
Orders: nb-customerservice@bio-techne.com
General: novus@novusbio.com

Products Related to NBP2-03285

NBP2-33376H	Blue Marker Antibody (6F4-F6) [HRP]
HAF007	Goat anti-Mouse IgG Secondary Antibody [HRP]
NB7539	Goat anti-Mouse IgG (H+L) Secondary Antibody [HRP]
NBP2-27231	Mouse IgG2b Isotype Control (MPC-11)

Limitations

This product is for research use only and is not approved for use in humans or in clinical diagnosis. Primary Antibodies are guaranteed for 1 year from date of receipt.

For more information on our 100% guarantee, please visit www.novusbio.com/guarantee

Earn gift cards/discounts by submitting a review: www.novusbio.com/reviews/submit/NBP2-03285

Earn gift cards/discounts by submitting a publication using this product:
www.novusbio.com/publications

