

Product Datasheet

Breast cancer suppressor candidate 1 Antibody (OTI3D6) NBP2-02898

Unit Size: 0.1 ml

Store at -20C. Avoid freeze-thaw cycles.

www.novusbio.com



technical@novusbio.com

Protocols, Publications, Related Products, Reviews, Research Tools and Images at:
www.novusbio.com/NBP2-02898

Updated 9/9/2025 v.20.1

Earn rewards for product
reviews and publications.

Submit a publication at www.novusbio.com/publications

Submit a review at www.novusbio.com/reviews/destination/NBP2-02898



NBP2-02898

Breast cancer suppressor candidate 1 Antibody (OTI3D6)

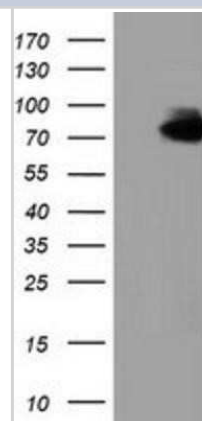
Product Information	
Unit Size	0.1 ml
Concentration	0.69 mg/ml
Storage	Store at -20C. Avoid freeze-thaw cycles.
Clonality	Monoclonal
Clone	OTI3D6
Preservative	0.02% Sodium Azide
Isotype	IgG2a
Purity	Immunogen affinity purified
Buffer	PBS (pH 7.3), 1.0% BSA and 50% Glycerol
Target Molecular Weight	86.3 kDa

Product Description	
Description	Novus Biologicals Mouse Breast cancer suppressor candidate 1 Antibody (OTI3D6) (NBP2-02898) is a monoclonal antibody validated for use in IHC, WB, Flow and ICC/IF. All Novus Biologicals antibodies are covered by our 100% guarantee.
Host	Mouse
Gene ID	4013
Gene Symbol	VWA5A
Species	Human
Immunogen	Full length human recombinant protein of human VWA5A (NP_055437) produced in HEK293T cell.

Product Application Details	
Applications	Western Blot, Immunohistochemistry-Paraffin, Flow Cytometry, Immunocytochemistry/ Immunofluorescence, Immunohistochemistry
Recommended Dilutions	Western Blot 1:2000, Flow Cytometry 1:100, Immunohistochemistry 1:150, Immunocytochemistry/ Immunofluorescence 1:100, Immunohistochemistry-Paraffin 1:150

Images

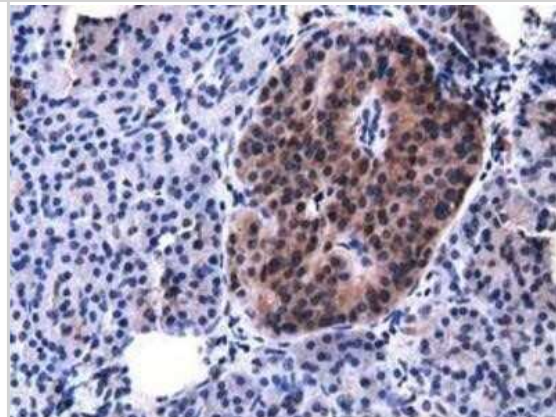
Western Blot: Breast cancer suppressor candidate 1 Antibody (OTI3D6) [NBP2-02898] - HEK293T cells were transfected with the pCMV6-ENTRY control (Left lane) or pCMV6-ENTRY Breast cancer suppressor candidate 1 (Right lane) cDNA for 48 hrs and lysed. Equivalent amounts of cell lysates (5 ug per lane) were separated by SDS-PAGE and immunoblotted with anti-Breast cancer suppressor candidate 1.



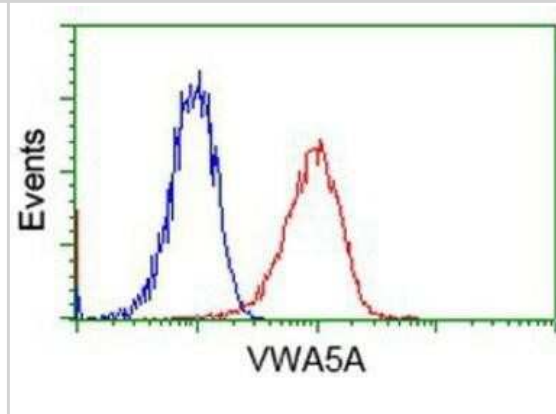
Immunocytochemistry/Immunofluorescence: Breast cancer suppressor candidate 1 Antibody (OTI3D6) [NBP2-02898] - Staining of COS7 cells transiently transfected by pCMV6-ENTRY Breast cancer suppressor candidate 1.



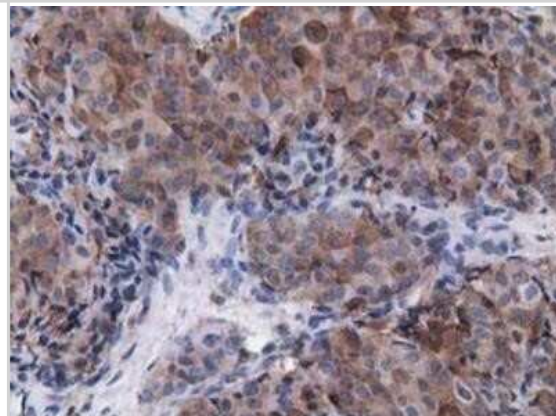
Immunohistochemistry-Paraffin: Breast cancer suppressor candidate 1 Antibody (OTI3D6) [NBP2-02898] - Staining of paraffin-embedded Human pancreas tissue using anti-Breast cancer suppressor candidate 1 mouse monoclonal antibody.



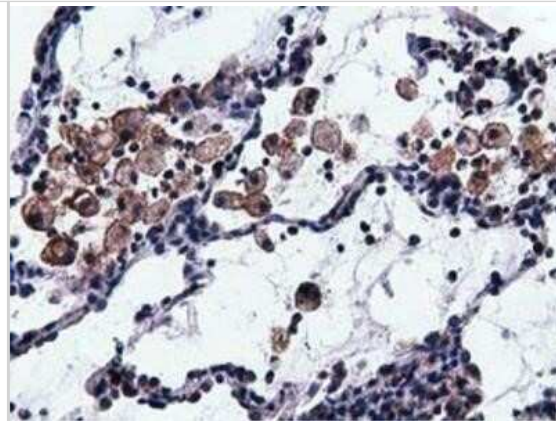
Flow Cytometry: Breast cancer suppressor candidate 1 Antibody (OTI3D6) [NBP2-02898] - Analysis of Jurkat cells, using anti-Breast cancer suppressor candidate 1 antibody, (Red), compared to a nonspecific negative control antibody (Blue).



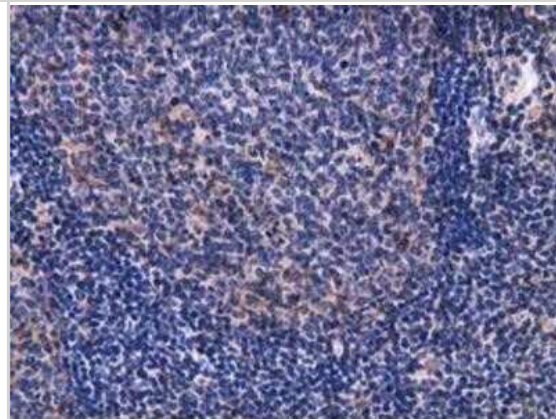
Immunohistochemistry-Paraffin: Breast cancer suppressor candidate 1 Antibody (OTI3D6) [NBP2-02898] - Staining of paraffin-embedded Adenocarcinoma of Human breast tissue using anti-Breast cancer suppressor candidate 1 mouse monoclonal antibody.



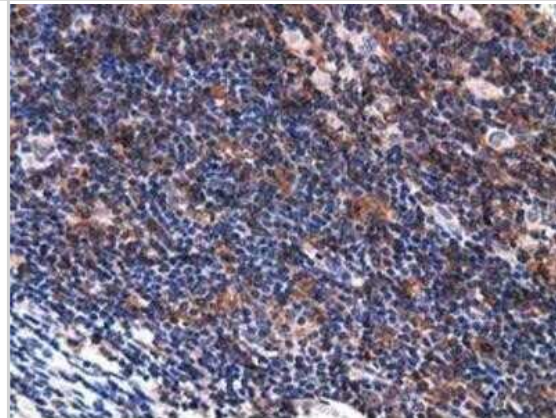
Immunohistochemistry-Paraffin: Breast cancer suppressor candidate 1 Antibody (OTI3D6) [NBP2-02898] - Staining of paraffin-embedded Carcinoma of Human lung tissue using anti-Breast cancer suppressor candidate 1 mouse monoclonal antibody.



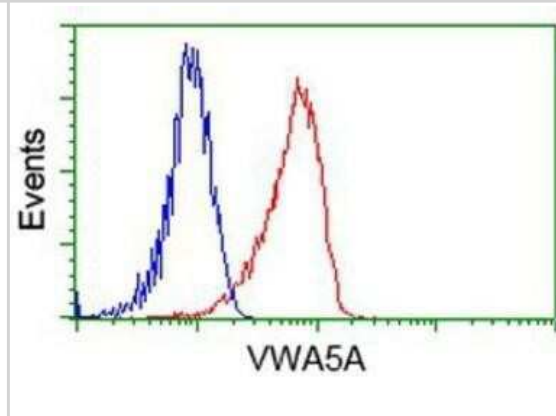
Immunohistochemistry-Paraffin: Breast cancer suppressor candidate 1 Antibody (OTI3D6) [NBP2-02898] - Staining of paraffin-embedded Human lymph node tissue using anti-Breast cancer suppressor candidate 1 mouse monoclonal antibody.



Immunohistochemistry-Paraffin: Breast cancer suppressor candidate 1 Antibody (OTI3D6) [NBP2-02898] - Staining of paraffin-embedded Human lymphoma tissue using anti-Breast cancer suppressor candidate 1 mouse monoclonal antibody.



Flow Cytometry: Breast cancer suppressor candidate 1 Antibody (OTI3D6) [NBP2-02898] - Analysis of Hela cells, using anti-Breast cancer suppressor candidate 1 antibody, (Red), compared to a nonspecific negative control antibody (Blue).





Novus Biologicals USA

10730 E. Briarwood Avenue
Centennial, CO 80112
USA
Phone: 303.730.1950
Toll Free: 1.888.506.6887
Fax: 303.730.1966
nb-customerservice@bio-techne.com

Bio-Techne Canada

21 Canmotor Ave
Toronto, ON M8Z 4E6
Canada
Phone: 905.827.6400
Toll Free: 855.668.8722
Fax: 905.827.6402
canada.inquires@bio-techne.com

Bio-Techne Ltd

19 Barton Lane
Abingdon Science Park
Abingdon, OX14 3NB, United Kingdom
Phone: (44) (0) 1235 529449
Free Phone: 0800 37 34 15
Fax: (44) (0) 1235 533420
info.EMEA@bio-techne.com

General Contact Information

www.novusbio.com
Technical Support: nb-technical@bio-techne.com
Orders: nb-customerservice@bio-techne.com
General: novus@novusbio.com

Products Related to NBP2-02898

NBP2-33376H	Blue Marker Antibody (6F4-F6) [HRP]
HAF007	Goat anti-Mouse IgG Secondary Antibody [HRP]
NB7539	Goat anti-Mouse IgG (H+L) Secondary Antibody [HRP]
NBP1-96778	Mouse IgG2a Isotype Control (M2A)

Limitations

This product is for research use only and is not approved for use in humans or in clinical diagnosis. Primary Antibodies are guaranteed for 1 year from date of receipt.

For more information on our 100% guarantee, please visit www.novusbio.com/guarantee

Earn gift cards/discounts by submitting a review: www.novusbio.com/reviews/submit/NBP2-02898

Earn gift cards/discounts by submitting a publication using this product:
www.novusbio.com/publications

