

# Product Datasheet

## Cytochrome P450 1A2 Antibody (OTI8F1) NBP2-02563

Unit Size: 0.1 ml

Store at -20C. Avoid freeze-thaw cycles.

[www.novusbio.com](http://www.novusbio.com)



[technical@novusbio.com](mailto:technical@novusbio.com)

### Publications: 1

Protocols, Publications, Related Products, Reviews, Research Tools and Images at:  
[www.novusbio.com/NBP2-02563](http://www.novusbio.com/NBP2-02563)

Updated 9/9/2025 v.20.1

Earn rewards for product  
reviews and publications.

Submit a publication at [www.novusbio.com/publications](http://www.novusbio.com/publications)

Submit a review at [www.novusbio.com/reviews/destination/NBP2-02563](http://www.novusbio.com/reviews/destination/NBP2-02563)



**NBP2-02563**

Cytochrome P450 1A2 Antibody (OTI8F1)

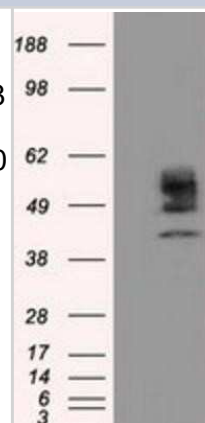
Product Information	
Unit Size	0.1 ml
Concentration	0.77 mg/ml
Storage	Store at -20C. Avoid freeze-thaw cycles.
Clonality	Monoclonal
Clone	OTI8F1
Preservative	0.02% Sodium Azide
Isotype	IgG2a
Purity	Immunogen affinity purified
Buffer	PBS (pH 7.3), 1.0% BSA and 50% Glycerol
Target Molecular Weight	58.2 kDa

Product Description	
Description	Novus Biologicals Mouse Cytochrome P450 1A2 Antibody (OTI8F1) (NBP2-02563) is a monoclonal antibody validated for use in IHC, WB, Flow and ICC/IF. Anti-Cytochrome P450 1A2 Antibody: Cited in 1 publication. All Novus Biologicals antibodies are covered by our 100% guarantee.
Host	Mouse
Gene ID	1544
Gene Symbol	CYP1A2
Species	Human
Immunogen	Full length human recombinant protein of human CYP1A2 (NP_000752) produced in HEK293T cell.

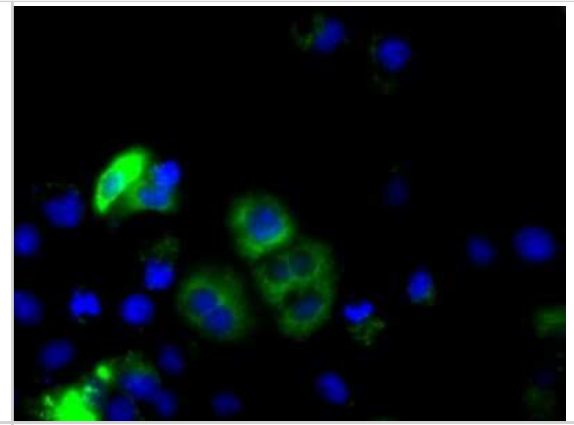
Product Application Details	
Applications	Western Blot, Immunohistochemistry-Paraffin, Flow Cytometry, Immunocytochemistry/ Immunofluorescence, Immunohistochemistry
Recommended Dilutions	Western Blot 1:2000, Flow Cytometry 1:100, Immunohistochemistry 1:50, Immunocytochemistry/ Immunofluorescence 1:100, Immunohistochemistry-Paraffin 1:50

**Images**

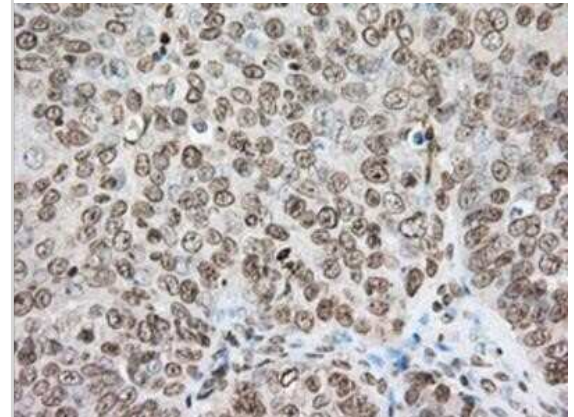
Western Blot: Cytochrome P450 1A2 Antibody (OTI8F1) [NBP2-02563] - HEK293T cells were transfected with the pCMV6-ENTRY control (Left lane) or pCMV6-ENTRY Cytochrome P450 1A2 (Right lane) cDNA for 48 hrs and lysed. Equivalent amounts of cell lysates (5 ug per lane) were separated by SDS-PAGE and immunoblotted with anti-Cytochrome P450 1A2.



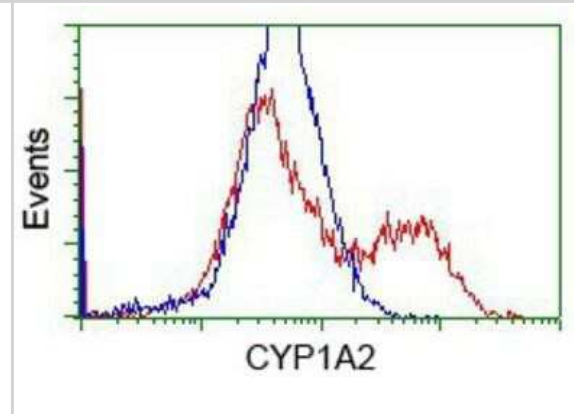
Immunocytochemistry/Immunofluorescence: Cytochrome P450 1A2 Antibody (OT18F1) [NBP2-02563] - Staining of COS7 cells transiently transfected by pCMV6-ENTRY CYP1A2 .



Immunohistochemistry-Paraffin: Cytochrome P450 1A2 Antibody (OT18F1) [NBP2-02563] - Staining of paraffin-embedded Adenocarcinoma of Human ovary tissue using anti-Cytochrome P450 1A2 mouse monoclonal antibody.



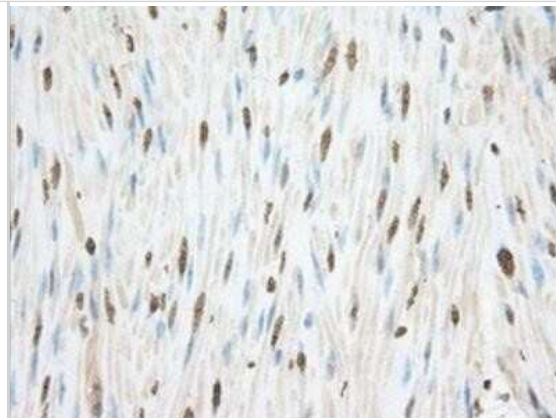
Flow Cytometry: Cytochrome P450 1A2 Antibody (OT18F1) [NBP2-02563] - HEK293T cells transfected with either overexpression plasmid (Red) or empty vector control plasmid (Blue) were immunostained by anti-Cytochrome P450 1A2 antibody, and then analyzed by flow cytometry.



Immunohistochemistry-Paraffin: Cytochrome P450 1A2 Antibody (OT18F1) [NBP2-02563] - Staining of paraffin-embedded Carcinoma of Human prostate tissue using anti-Cytochrome P450 1A2 mouse monoclonal antibody.



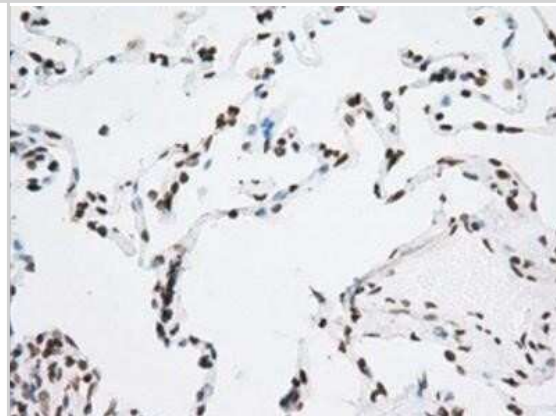
Immunohistochemistry-Paraffin: Cytochrome P450 1A2 Antibody (OT18F1) [NBP2-02563] - Staining of paraffin-embedded Human colon tissue using anti-Cytochrome P450 1A2 mouse monoclonal antibody.



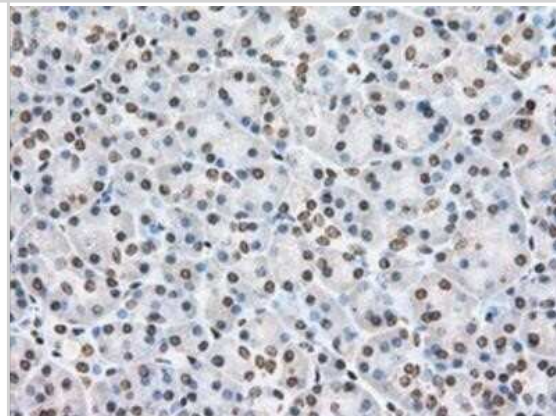
Immunohistochemistry-Paraffin: Cytochrome P450 1A2 Antibody (OT18F1) [NBP2-02563] - Staining of paraffin-embedded Human Kidney tissue using anti-Cytochrome P450 1A2 mouse monoclonal antibody.



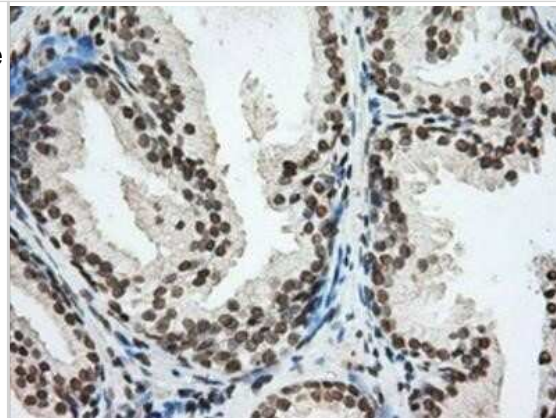
Immunohistochemistry-Paraffin: Cytochrome P450 1A2 Antibody (OT18F1) [NBP2-02563] - Staining of paraffin-embedded Human lung tissue using anti-Cytochrome P450 1A2 mouse monoclonal antibody.



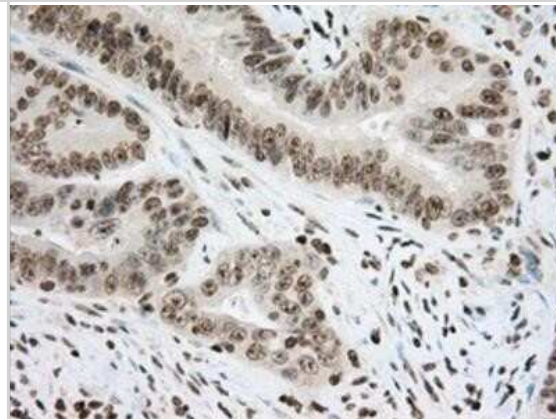
Immunohistochemistry-Paraffin: Cytochrome P450 1A2 Antibody (OT18F1) [NBP2-02563] - Staining of paraffin-embedded Human pancreas tissue using anti-Cytochrome P450 1A2 mouse monoclonal antibody.



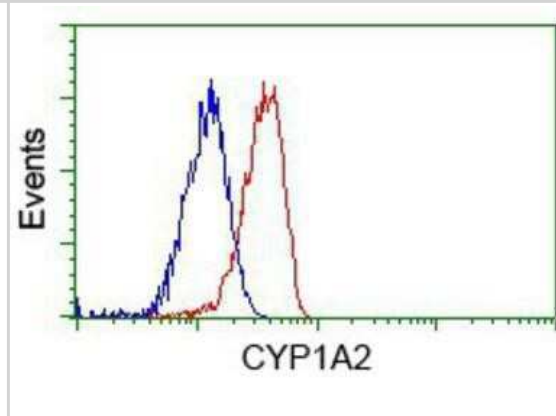
Immunohistochemistry-Paraffin: Cytochrome P450 1A2 Antibody (OTI8F1) [NBP2-02563] - Staining of paraffin-embedded Human prostate tissue using anti-Cytochrome P450 1A2 mouse monoclonal antibody.



Immunohistochemistry-Paraffin: Cytochrome P450 1A2 Antibody (OTI8F1) [NBP2-02563] - Staining of paraffin-embedded Adenocarcinoma of Human colon tissue using anti-Cytochrome P450 1A2 mouse monoclonal antibody.



Flow Cytometry: Cytochrome P450 1A2 Antibody (OTI8F1) [NBP2-02563] - Analysis of Jurkat cells, using anti-Cytochrome P450 1A2 antibody, (Red), compared to a nonspecific negative control antibody (Blue).



## Publications

Wuensch T, Heucke N, Wizenty J et al. Hepatic CYP1A2 activity in liver tumors and the implications for preoperative volume-function analysis American Journal of Physiology-Gastrointestinal and Liver Physiology 2019-05-01 [PMID: 30869529] (Immunocytochemistry/ Immunofluorescence)



### **Novus Biologicals USA**

10730 E. Briarwood Avenue  
Centennial, CO 80112  
USA  
Phone: 303.730.1950  
Toll Free: 1.888.506.6887  
Fax: 303.730.1966  
nb-customerservice@bio-techne.com

### **Bio-Techne Canada**

21 Canmotor Ave  
Toronto, ON M8Z 4E6  
Canada  
Phone: 905.827.6400  
Toll Free: 855.668.8722  
Fax: 905.827.6402  
canada.inquires@bio-techne.com

### **Bio-Techne Ltd**

19 Barton Lane  
Abingdon Science Park  
Abingdon, OX14 3NB, United Kingdom  
Phone: (44) (0) 1235 529449  
Free Phone: 0800 37 34 15  
Fax: (44) (0) 1235 533420  
info.EMEA@bio-techne.com

### **General Contact Information**

www.novusbio.com  
Technical Support: nb-technical@bio-techne.com  
Orders: nb-customerservice@bio-techne.com  
General: novus@novusbio.com

### **Products Related to NBP2-02563**

---

NBP2-33376H	Blue Marker Antibody (6F4-F6) [HRP]
HAF007	Goat anti-Mouse IgG Secondary Antibody [HRP]
NB7539	Goat anti-Mouse IgG (H+L) Secondary Antibody [HRP]
NBP1-96778	Mouse IgG2a Isotype Control (M2A)

---

### **Limitations**

This product is for research use only and is not approved for use in humans or in clinical diagnosis. Primary Antibodies are guaranteed for 1 year from date of receipt.

For more information on our 100% guarantee, please visit [www.novusbio.com/guarantee](http://www.novusbio.com/guarantee)

Earn gift cards/discounts by submitting a review: [www.novusbio.com/reviews/submit/NBP2-02563](http://www.novusbio.com/reviews/submit/NBP2-02563)

Earn gift cards/discounts by submitting a publication using this product:  
[www.novusbio.com/publications](http://www.novusbio.com/publications)

