

Product Datasheet

Glucose 6 phosphate isomerase Antibody (OTI2D2) NBP2-02541

Unit Size: 0.1 ml

Store at -20C. Avoid freeze-thaw cycles.

www.novusbio.com



technical@novusbio.com

Publications: 1

Protocols, Publications, Related Products, Reviews, Research Tools and Images at:
www.novusbio.com/NBP2-02541

Updated 9/9/2025 v.20.1

Earn rewards for product
reviews and publications.

Submit a publication at www.novusbio.com/publications

Submit a review at www.novusbio.com/reviews/destination/NBP2-02541



NBP2-02541**Glucose 6 phosphate isomerase Antibody (OTI2D2)**

Product Information	
Unit Size	0.1 ml
Concentration	0.68 mg/ml
Storage	Store at -20C. Avoid freeze-thaw cycles.
Clonality	Monoclonal
Clone	OTI2D2
Preservative	0.02% Sodium Azide
Isotype	IgG1
Purity	Immunogen affinity purified
Buffer	PBS (pH 7.3), 1.0% BSA and 50% Glycerol
Target Molecular Weight	63 kDa

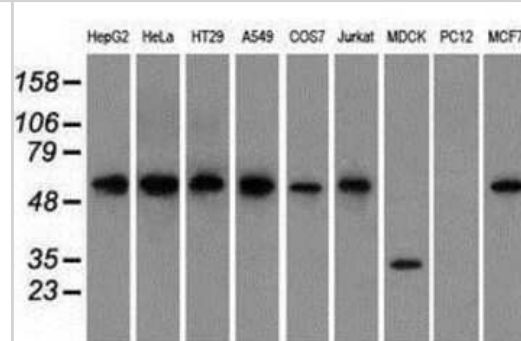
Product Description	
Description	Novus Biologicals Mouse Glucose 6 phosphate isomerase Antibody (OTI2D2) (NBP2-02541) is a monoclonal antibody validated for use in IHC, WB and ICC/IF. Anti-Glucose 6 phosphate isomerase Antibody: Cited in 1 publication. All Novus Biologicals antibodies are covered by our 100% guarantee.
Host	Mouse
Gene ID	2821
Gene Symbol	GPI
Species	Human, Mouse, Rat, Monkey, Primate
Reactivity Notes	Please note that this antibody is reactive to Mouse and derived from the same host, Mouse. Mouse-On-Mouse blocking reagent may be needed for IHC and ICC experiments to reduce high background signal. You can find these reagents under catalog numbers PK-2200-NB and MP-2400-NB. Please contact Technical Support if you have any questions.
Immunogen	Full length human recombinant protein of human GPI(NP_000166) produced in HEK293T cell.

Product Application Details	
Applications	Western Blot, Immunohistochemistry-Paraffin, Immunocytochemistry/Immunofluorescence, Immunohistochemistry
Recommended Dilutions	Western Blot 1:1000-2000, Immunohistochemistry 1:50, Immunocytochemistry/Immunofluorescence 1:100, Immunohistochemistry-Paraffin 1:50

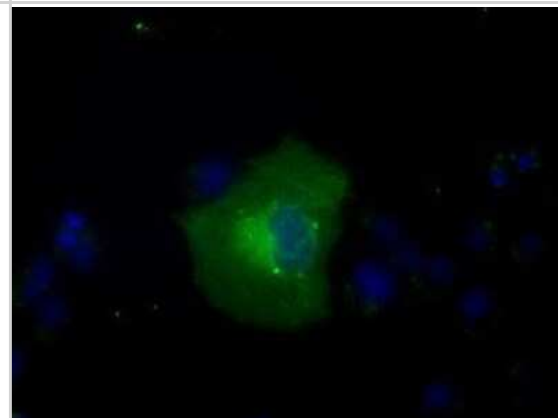


Images

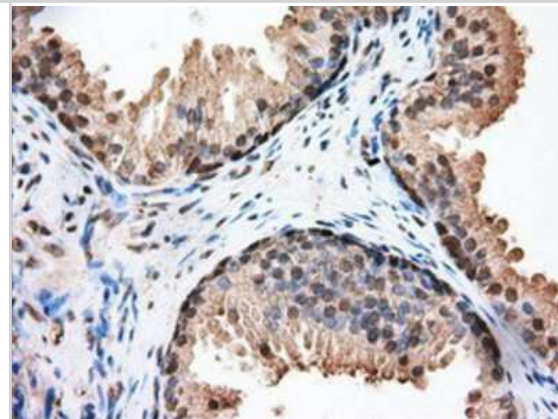
Western Blot: Glucose 6 phosphate isomerase Antibody (2D2) [NBP2-02541] Analysis of extracts (35ug) from 9 different cell lines by using anti-Glucose 6 phosphate isomerase monoclonal antibody.



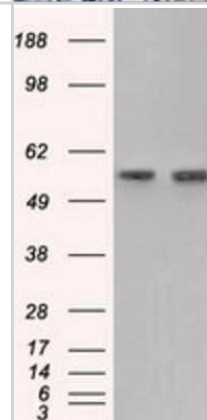
Immunocytochemistry/Immunofluorescence: Glucose 6 phosphate isomerase Antibody (2D2) [NBP2-02541] - Staining of COS7 cells transiently transfected by pCMV6-ENTRY Glucose 6 phosphate isomerase.



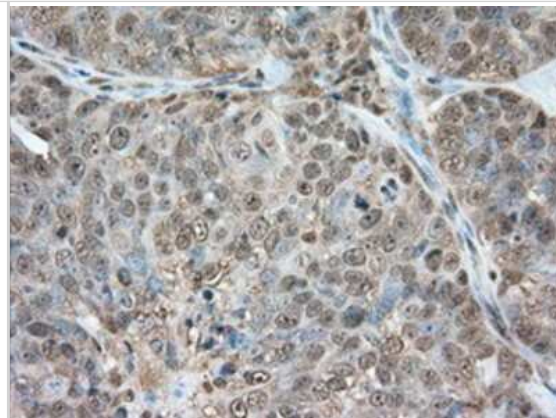
Immunohistochemistry-Paraffin: Glucose 6 phosphate isomerase Antibody (2D2) [NBP2-02541] - Staining of paraffin-embedded Human prostate tissue using anti-Glucose 6 phosphate isomerase mouse monoclonal antibody.



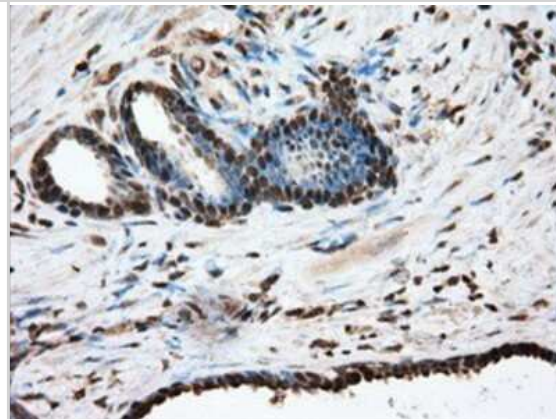
Western Blot: Glucose 6 phosphate isomerase Antibody (2D2) [NBP2-02541] - HEK293T cells were transfected with the pCMV6-ENTRY control (Left lane) or pCMV6-ENTRY Glucose 6 phosphate isomerase (Right lane) cDNA for 48 hrs and lysed. Equivalent amounts of cell lysates (5 ug per lane) were separated by SDS-PAGE and immunoblotted with anti-Glucose 6 phosphate isomerase.



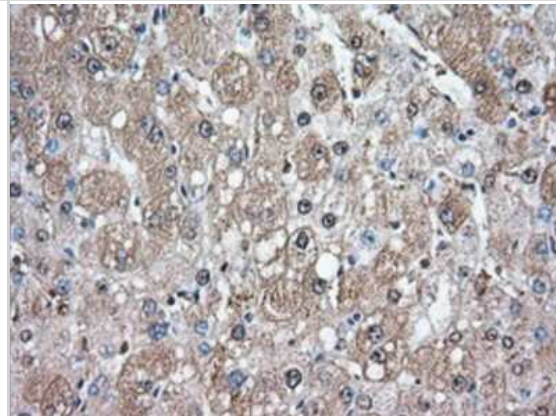
Immunohistochemistry-Paraffin: Glucose 6 phosphate isomerase Antibody (2D2) [NBP2-02541] - Staining of paraffin-embedded Adenocarcinoma of Human ovary tissue using anti-Glucose 6 phosphate isomerase mouse monoclonal antibody.



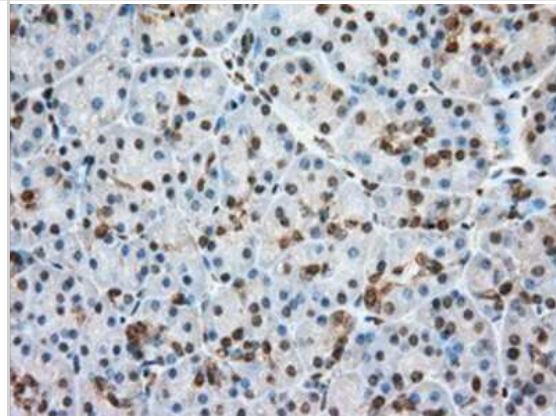
Immunohistochemistry-Paraffin: Glucose 6 phosphate isomerase Antibody (2D2) [NBP2-02541] - Staining of paraffin-embedded Carcinoma of Human prostate tissue using anti-Glucose 6 phosphate isomerase mouse monoclonal antibody.



Immunohistochemistry-Paraffin: Glucose 6 phosphate isomerase Antibody (2D2) [NBP2-02541] - Staining of paraffin-embedded Human liver tissue using anti-Glucose 6 phosphate isomerase mouse monoclonal antibody.



Immunohistochemistry-Paraffin: Glucose 6 phosphate isomerase Antibody (2D2) [NBP2-02541] - Staining of paraffin-embedded Human pancreas tissue using anti-Glucose 6 phosphate isomerase mouse monoclonal antibody.



Glucose 6 phosphate isomerase Antibody (OTI2D2)[NBP2-02541]Simple Western analysis of endogenous protein ARNTL from HEK293T lysates (0.2 mg/mL) using ARNTL Mouse Monoclonal Antibody . The virtual lane view (left) shows the target (as indicated) at 1:50 dilution of primary antibody. The corresponding electropherogram view (right) plots chemiluminescence by molecular weight along the capillary at a 1:50 dilution of primary antibody. This experiment was performed under reducing conditions on the Jess Simple Western instrument from ProteinSimple, a Bio-Techne brand, using the 12-230 kDa Separation Module.

Publications

Calvo-Vidal MN, Zamponi N, Krumsiek J et al. Oncogenic HSP90 Facilitates Metabolic Alterations in Aggressive B-cell Lymphomas Cancer Research 2021-10-15 [PMID: 34479963]





Novus Biologicals USA

10730 E. Briarwood Avenue
Centennial, CO 80112
USA
Phone: 303.730.1950
Toll Free: 1.888.506.6887
Fax: 303.730.1966
nb-customerservice@bio-techne.com

Bio-Techne Canada

21 Canmotor Ave
Toronto, ON M8Z 4E6
Canada
Phone: 905.827.6400
Toll Free: 855.668.8722
Fax: 905.827.6402
canada.inquires@bio-techne.com

Bio-Techne Ltd

19 Barton Lane
Abingdon Science Park
Abingdon, OX14 3NB, United Kingdom
Phone: (44) (0) 1235 529449
Free Phone: 0800 37 34 15
Fax: (44) (0) 1235 533420
info.EMEA@bio-techne.com

General Contact Information

www.novusbio.com
Technical Support: nb-technical@bio-techne.com
Orders: nb-customerservice@bio-techne.com
General: novus@novusbio.com

Products Related to NBP2-02541

NBP2-33376H	Blue Marker Antibody (6F4-F6) [HRP]
HAF007	Goat anti-Mouse IgG Secondary Antibody [HRP]
NB7539	Goat anti-Mouse IgG (H+L) Secondary Antibody [HRP]
NBP1-97005-0.5mg	Mouse IgG1 Isotype Control (MG1)

Limitations

This product is for research use only and is not approved for use in humans or in clinical diagnosis. Primary Antibodies are guaranteed for 1 year from date of receipt.

For more information on our 100% guarantee, please visit www.novusbio.com/guarantee

Earn gift cards/discounts by submitting a review: www.novusbio.com/reviews/submit/NBP2-02541

Earn gift cards/discounts by submitting a publication using this product:
www.novusbio.com/publications

