

Product Datasheet

Prolactin Antibody (OTI6B1)

NBP2-02142

Unit Size: 0.1 ml

Store at -20C. Avoid freeze-thaw cycles.

www.novusbio.com



technical@novusbio.com

Publications: 1

Protocols, Publications, Related Products, Reviews, Research Tools and Images at:
www.novusbio.com/NBP2-02142

Updated 9/9/2025 v.20.1

Earn rewards for product
reviews and publications.

Submit a publication at www.novusbio.com/publications

Submit a review at www.novusbio.com/reviews/destination/NBP2-02142



NBP2-02142

Prolactin Antibody (OTI6B1)

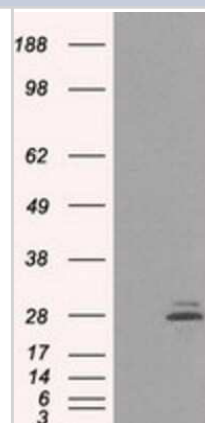
Product Information	
Unit Size	0.1 ml
Concentration	1 mg/ml
Storage	Store at -20C. Avoid freeze-thaw cycles.
Clonality	Monoclonal
Clone	OTI6B1
Preservative	0.02% Sodium Azide
Isotype	IgG2a
Purity	Immunogen affinity purified
Buffer	PBS (pH 7.3), 1.0% BSA and 50% Glycerol
Target Molecular Weight	25.7 kDa

Product Description	
Description	Novus Biologicals Mouse Prolactin Antibody (OTI6B1) (NBP2-02142) is a monoclonal antibody validated for use in IHC, WB, Flow and ICC/IF. Anti-Prolactin Antibody: Cited in 1 publication. All Novus Biologicals antibodies are covered by our 100% guarantee.
Host	Mouse
Gene ID	5617
Gene Symbol	PRL
Species	Human
Immunogen	Full length human recombinant protein of human PRL (NP_000939) produced in HEK293T cell.

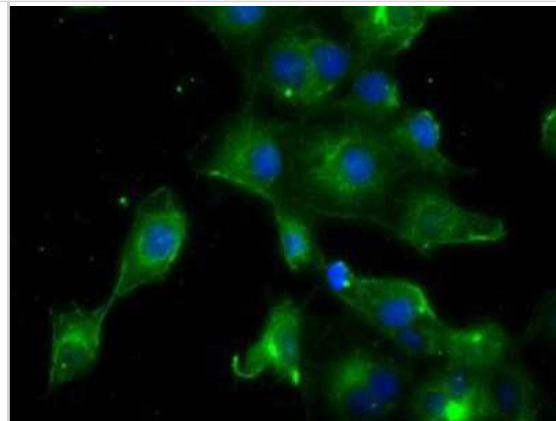
Product Application Details	
Applications	Western Blot, Immunohistochemistry-Paraffin, Flow Cytometry, Immunocytochemistry/ Immunofluorescence, Immunohistochemistry
Recommended Dilutions	Western Blot 1:1000, Flow Cytometry 1:100, Immunohistochemistry 1:50, Immunocytochemistry/ Immunofluorescence 1:50-100, Immunohistochemistry-Paraffin 1:50

Images

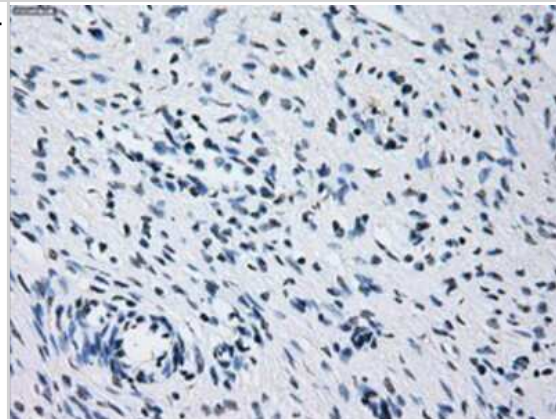
Western Blot: Prolactin Antibody (6B1) [NBP2-02142] - HEK293T cells were transfected with the pCMV6-ENTRY control (Left lane) or pCMV6-ENTRY Prolactin (Right lane) cDNA for 48 hrs and lysed. Equivalent amounts of cell lysates (5 ug per lane) were separated by SDS-PAGE and immunoblotted with anti-Prolactin.



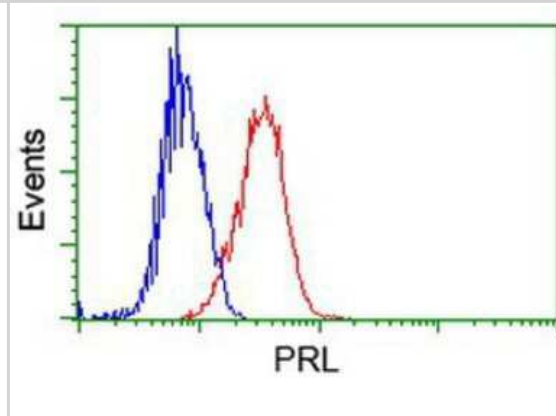
Immunocytochemistry/Immunofluorescence: Prolactin Antibody (6B1) [NBP2-02142] Staining of COS7 cells transiently transfected by pCMV6-ENTRY Prolactin.



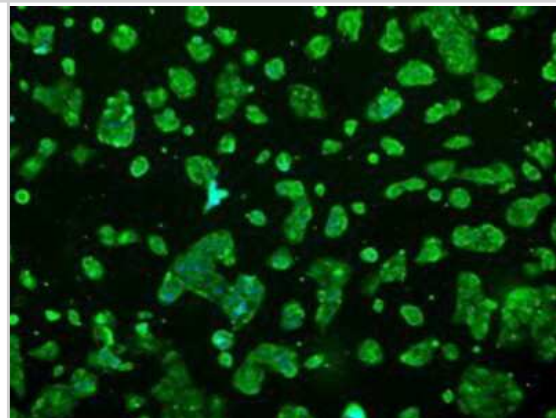
Immunohistochemistry-Paraffin: Prolactin Antibody (6B1) [NBP2-02142] - Staining of paraffin-embedded Human Ovary tissue using anti-Prolactin mouse monoclonal antibody.



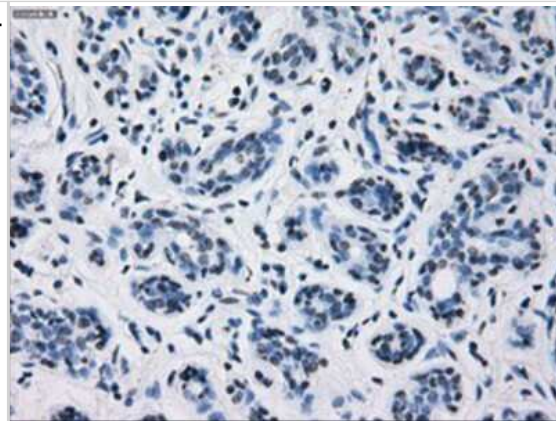
Flow Cytometry: Prolactin Antibody (6B1) [NBP2-02142] - Analysis of Jurkat cells, using anti-Prolactin antibody, (Red), compared to a nonspecific negative control antibody (Blue).



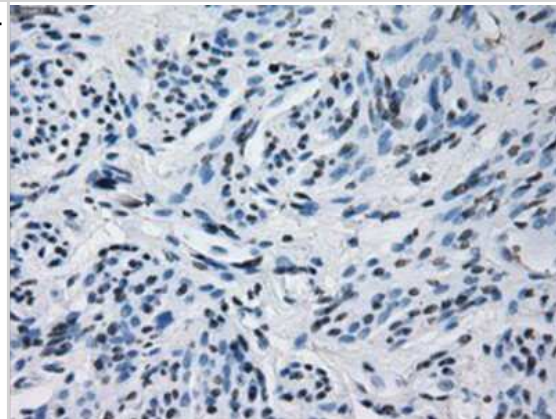
Immunocytochemistry/Immunofluorescence: Prolactin Antibody (6B1) [NBP2-02142] - Immunofluorescent staining of HepG2 cells using anti-Prolactin mouse monoclonal antibody.



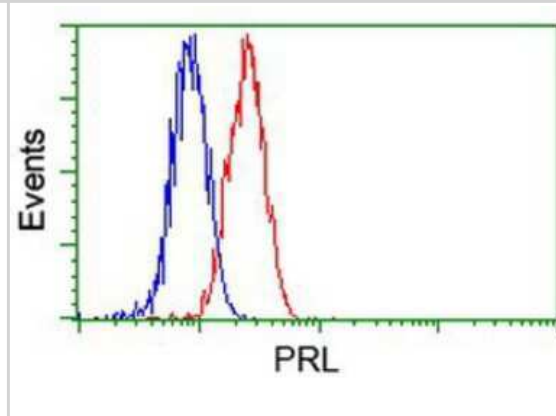
Immunohistochemistry-Paraffin: Prolactin Antibody (6B1) [NBP2-02142] - Staining of paraffin-embedded Human breast tissue using anti-Prolactin mouse monoclonal antibody.



Immunohistochemistry-Paraffin: Prolactin Antibody (6B1) [NBP2-02142] - Staining of paraffin-embedded Human endometrium tissue using anti-Prolactin mouse monoclonal antibody.



Flow Cytometry: Prolactin Antibody (6B1) [NBP2-02142] - Analysis of Hela cells, using anti-Prolactin antibody, (Red), compared to a nonspecific negative control antibody (Blue).



Publications

Jingert K, Paulsen F, Jacobi C et al. Prolactin Inducible Protein, but Not Prolactin, Is Present in Human Tears, Is Involved in Tear Film Quality, and Influences Evaporative Dry Eye Disease *Frontiers in Medicine* 2022-06-30 [PMID: 35847789] (Immunohistochemistry, Immunohistochemistry-Paraffin)



Novus Biologicals USA

10730 E. Briarwood Avenue
Centennial, CO 80112
USA
Phone: 303.730.1950
Toll Free: 1.888.506.6887
Fax: 303.730.1966
nb-customerservice@bio-techne.com

Bio-Techne Canada

21 Canmotor Ave
Toronto, ON M8Z 4E6
Canada
Phone: 905.827.6400
Toll Free: 855.668.8722
Fax: 905.827.6402
canada.inquires@bio-techne.com

Bio-Techne Ltd

19 Barton Lane
Abingdon Science Park
Abingdon, OX14 3NB, United Kingdom
Phone: (44) (0) 1235 529449
Free Phone: 0800 37 34 15
Fax: (44) (0) 1235 533420
info.EMEA@bio-techne.com

General Contact Information

www.novusbio.com
Technical Support: nb-technical@bio-techne.com
Orders: nb-customerservice@bio-techne.com
General: novus@novusbio.com

Products Related to NBP2-02142

NBP2-33376H	Blue Marker Antibody (6F4-F6) [HRP]
HAF007	Goat anti-Mouse IgG Secondary Antibody [HRP]
NB7539	Goat anti-Mouse IgG (H+L) Secondary Antibody [HRP]
NBP1-96778	Mouse IgG2a Isotype Control (M2A)

Limitations

This product is for research use only and is not approved for use in humans or in clinical diagnosis. Primary Antibodies are guaranteed for 1 year from date of receipt.

For more information on our 100% guarantee, please visit www.novusbio.com/guarantee

Earn gift cards/discounts by submitting a review: www.novusbio.com/reviews/submit/NBP2-02142

Earn gift cards/discounts by submitting a publication using this product:
www.novusbio.com/publications

