

# Product Datasheet

## AKT1 Antibody (OTI4D6) NBP2-01724

Unit Size: 0.1 ml

Store at -20C. Avoid freeze-thaw cycles.

[www.novusbio.com](http://www.novusbio.com)



[technical@novusbio.com](mailto:technical@novusbio.com)

**Reviews: 1 Publications: 2**

Protocols, Publications, Related Products, Reviews, Research Tools and Images at:  
[www.novusbio.com/NBP2-01724](http://www.novusbio.com/NBP2-01724)

Updated 9/9/2025 v.20.1

**Earn rewards for product  
reviews and publications.**

Submit a publication at [www.novusbio.com/publications](http://www.novusbio.com/publications)

Submit a review at [www.novusbio.com/reviews/destination/NBP2-01724](http://www.novusbio.com/reviews/destination/NBP2-01724)

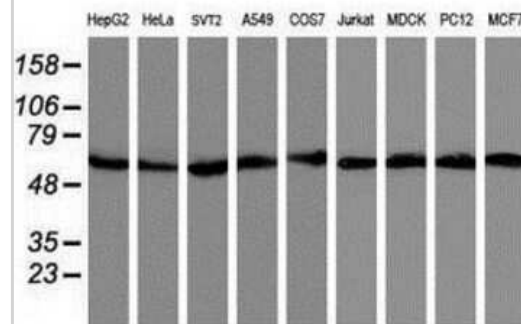


**NBP2-01724****AKT1 Antibody (OTI4D6)**

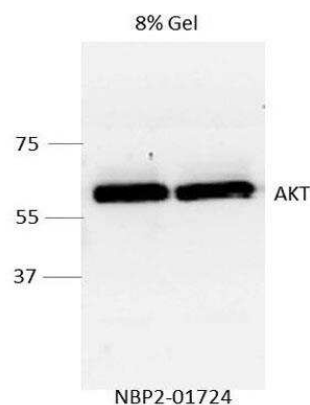
<b>Product Information</b>	
<b>Unit Size</b>	0.1 ml
<b>Concentration</b>	1 mg/ml
<b>Storage</b>	Store at -20C. Avoid freeze-thaw cycles.
<b>Clonality</b>	Monoclonal
<b>Clone</b>	OTI4D6
<b>Preservative</b>	0.02% Sodium Azide
<b>Isotype</b>	IgG1
<b>Purity</b>	Immunogen affinity purified
<b>Buffer</b>	PBS (pH 7.3), 1% BSA, 50% Glycerol
<b>Target Molecular Weight</b>	55.7 kDa
<b>Product Description</b>	
<b>Description</b>	Novus Biologicals Mouse AKT1 Antibody (OTI4D6) (NBP2-01724) is a monoclonal antibody validated for use in IHC, WB, Flow, ICC/IF and Simple Western. Anti-AKT1 Antibody: Cited in 2 publications. All Novus Biologicals antibodies are covered by our 100% guarantee.
<b>Host</b>	Mouse
<b>Gene ID</b>	207
<b>Gene Symbol</b>	AKT1
<b>Species</b>	Human, Mouse, Rat, Canine, Monkey
<b>Reactivity Notes</b>	Please note that this antibody is reactive to Mouse and derived from the same host, Mouse. Mouse-On-Mouse blocking reagent may be needed for IHC and ICC experiments to reduce high background signal. You can find these reagents under catalog numbers PK-2200-NB and MP-2400-NB. Please contact Technical Support if you have any questions.
<b>Specificity/Sensitivity</b>	This antibody also cross-reacts with AKT3.
<b>Immunogen</b>	This AKT1 antibody is made to the full length human recombinant protein of human AKT1(NP_005154) produced in HEK293T cell.
<b>Product Application Details</b>	
<b>Applications</b>	Western Blot, Simple Western, Immunohistochemistry-Paraffin, Flow Cytometry, Immunocytochemistry/ Immunofluorescence, Immunohistochemistry
<b>Recommended Dilutions</b>	Western Blot 1:500-2000, Simple Western 1:10 - 1:250, Flow Cytometry 1:100, Immunohistochemistry 1:150, Immunocytochemistry/ Immunofluorescence 1:100, Immunohistochemistry-Paraffin 1:150
<b>Application Notes</b>	See <a href="#">Simple Western Antibody Database</a> for Simple Western validation: Tested in PDLO lysate, separated by Size, antibody dilution of 1:10, 1:50, 1:250, apparent MW was 60 kDa

## Images

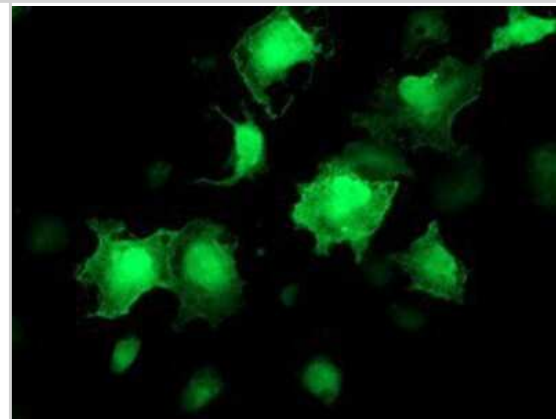
Western Blot: AKT1 Antibody (OTI4D6) [NBP2-01724] - WB analysis of extracts (35 ug) from 9 different cell lines using AKT1 antibody.



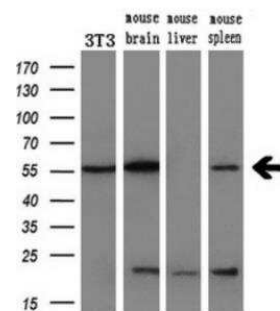
Western Blot: AKT1 Antibody (OTI4D6) [NBP2-01724] - WB detection of AKT1 in human MD-MB-231 cells using AKT1 antibody NBP2-01724 at a dilution of 1:2000. WB image submitted by a verified customer review.



Immunocytochemistry/Immunofluorescence: AKT1 Antibody (OTI4D6) [NBP2-01724] - ICC/IF of COS7 cells transiently transfected by pCMV6-ENTRY AKT1.



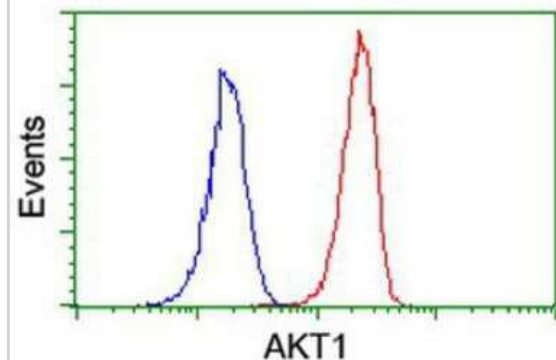
Western Blot: AKT1 Antibody (OTI4D6) [NBP2-01724] - WB analysis of extracts (10 ug) from a mouse cell line and 3 different mouse tissues using AKT1 antibody at a 1:200 dilution.



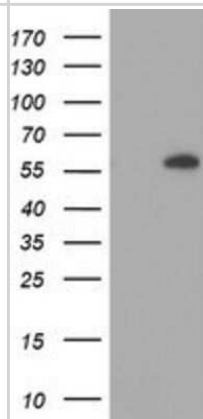
Immunohistochemistry-Paraffin: AKT1 Antibody (OTI4D6) [NBP2-01724] - IHC-P staining of paraffin-embedded human prostate tissue using anti-AKT1 antibody. Heat-induced epitope retrieval in 10 mM citric buffer, pH 6.0, 100C for 10 min.



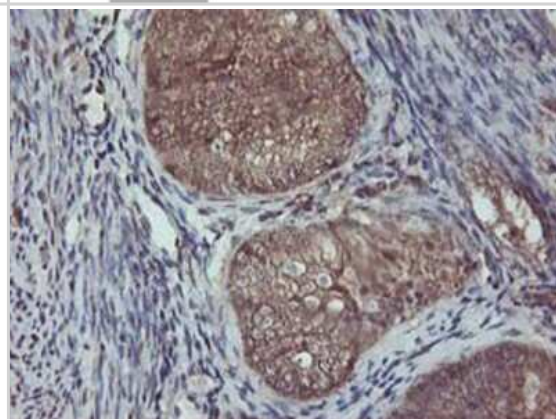
Flow Cytometry: AKT1 Antibody (OTI4D6) [NBP2-01724] - Flow cytometric analysis of Jurkat cells using anti-AKT1 antibody (red), compared to a nonspecific negative control antibody (blue).



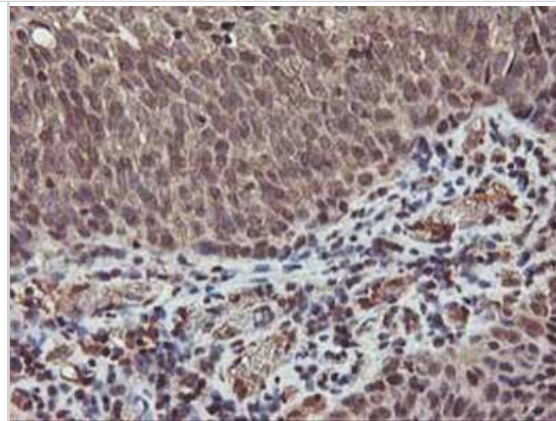
Western Blot: AKT1 Antibody (OTI4D6) [NBP2-01724] - HEK293T cells were transfected with the pCMV6-ENTRY control (left lane) or pCMV6-ENTRY AKT1 (right lane) cDNA for 48 hrs and lysed. Equivalent amounts of cell lysates (5 ug per lane) were separated by SDS-PAGE and immunoblotted with anti-AKT1.



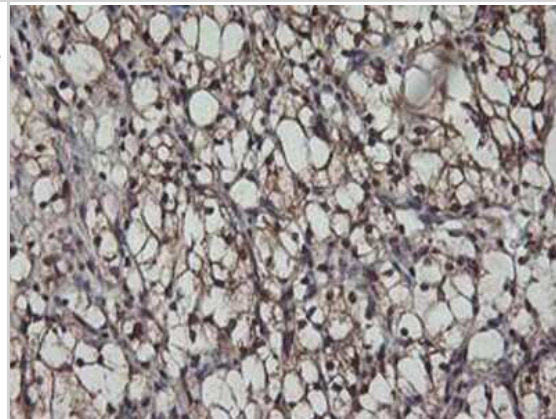
Immunohistochemistry-Paraffin: AKT1 Antibody (OTI4D6) [NBP2-01724] - IHC-P staining of paraffin-embedded adenocarcinoma of human endometrium tissue using anti-AKT1 antibody. Heat-induced epitope retrieval in 10 mM citric buffer, pH 6.0, 100C for 10 min.



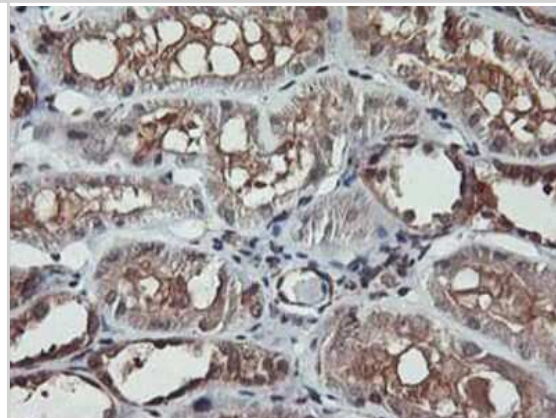
Immunohistochemistry-Paraffin: AKT1 Antibody (OTI4D6) [NBP2-01724]  
- IHC-P staining of paraffin-embedded carcinoma of human bladder tissue using anti-AKT1 antibody. Heat-induced epitope retrieval in 10 mM citric buffer, pH 6.0, 100C for 10 min.



Immunohistochemistry-Paraffin: AKT1 Antibody (OTI4D6) [NBP2-01724]  
- IHC-P staining of paraffin-embedded carcinoma of human kidney tissue using AKT1 antibody. Heat-induced epitope retrieval in 10 mM citric buffer, pH 6.0, 100C for 10 min.



Immunohistochemistry-Paraffin: AKT1 Antibody (OTI4D6) [NBP2-01724]  
- IHC-P staining of paraffin-embedded human kidney tissue using anti-AKT1 antibody. Heat-induced epitope retrieval in 10 mM citric buffer, pH 6.0, 100C for 10 min.



AKT1 Antibody (OTI4D6)[NBP2-01724]Simple Western analysis of endogenous protein BCAT1 from HepG2 lysates (0.5 mg/mL) using BCAT1 Mouse Monoclonal Antibody . The virtual lane view (left) shows the target (as indicated) at 1:20 dilution of primary antibody. The corresponding electropherogram view (right) plots chemiluminescence by molecular weight along the capillary at a 1:20 dilution of primary antibody. This experiment was performed under reducing conditions on the Jess Simple Western instrument from ProteinSimple, a Bio-Techne brand, using the 12-230 kDa Separation Module.



## Publications

Zhou M, Zhou S, Han K et al. Th1 immune maturation effects of Nocardia rubra cell-wall skeleton via PI3K/Akt/PAX8 regulatory axis Science progress 2022-04-27 [PMID: 35473474] (WB, Mouse)

Balboa M, Abdulmalek SA, Khalil S. Oxidative stress and expression of insulin signaling proteins in the brain of diabetic rats: Role of Nigella sativa oil and antidiabetic drugs. PLoS ONE 2017-05-15 [PMID: 28505155] (WB, Rat)



### Novus Biologicals USA

10730 E. Briarwood Avenue  
Centennial, CO 80112  
USA

Phone: 303.730.1950

Toll Free: 1.888.506.6887

Fax: 303.730.1966

[nb-customerservice@bio-techne.com](mailto:nb-customerservice@bio-techne.com)

### Bio-Techne Canada

21 Canmotor Ave  
Toronto, ON M8Z 4E6  
Canada

Phone: 905.827.6400

Toll Free: 855.668.8722

Fax: 905.827.6402

[canada.inquires@bio-techne.com](mailto:canada.inquires@bio-techne.com)

### Bio-Techne Ltd

19 Barton Lane  
Abingdon Science Park  
Abingdon, OX14 3NB, United Kingdom

Phone: (44) (0) 1235 529449

Free Phone: 0800 37 34 15

Fax: (44) (0) 1235 533420

[info.EMEA@bio-techne.com](mailto:info.EMEA@bio-techne.com)

### General Contact Information

[www.novusbio.com](http://www.novusbio.com)

Technical Support: [nb-technical@bio-techne.com](mailto:nb-technical@bio-techne.com)

Orders: [nb-customerservice@bio-techne.com](mailto:nb-customerservice@bio-techne.com)

General: [novus@novusbio.com](mailto:novus@novusbio.com)

### Products Related to NBP2-01724

---

NBP2-33376H	Blue Marker Antibody (6F4-F6) [HRP]
HAF007	Goat anti-Mouse IgG Secondary Antibody [HRP]
NB7539	Goat anti-Mouse IgG (H+L) Secondary Antibody [HRP]
NBP1-97005-0.5mg	Mouse IgG1 Isotype Control (MG1)

---

### Limitations

This product is for research use only and is not approved for use in humans or in clinical diagnosis. Primary Antibodies are guaranteed for 1 year from date of receipt.

For more information on our 100% guarantee, please visit [www.novusbio.com/guarantee](http://www.novusbio.com/guarantee)

Earn gift cards/discounts by submitting a review: [www.novusbio.com/reviews/submit/NBP2-01724](http://www.novusbio.com/reviews/submit/NBP2-01724)

Earn gift cards/discounts by submitting a publication using this product:  
[www.novusbio.com/publications](http://www.novusbio.com/publications)

