

Product Datasheet

Serpin B6 Antibody (OTI1C5)

NBP2-01650

Unit Size: 0.1 ml

Store at -20C. Avoid freeze-thaw cycles.

www.novusbio.com



technical@novusbio.com

Publications: 1

Protocols, Publications, Related Products, Reviews, Research Tools and Images at:
www.novusbio.com/NBP2-01650

Updated 9/9/2025 v.20.1

Earn rewards for product reviews and publications.

Submit a publication at www.novusbio.com/publications

Submit a review at www.novusbio.com/reviews/destination/NBP2-01650



NBP2-01650

Serpine B6 Antibody (OT11C5)

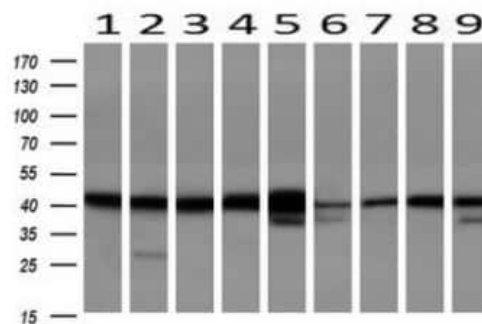
Product Information	
Unit Size	0.1 ml
Concentration	0.71 mg/ml
Storage	Store at -20C. Avoid freeze-thaw cycles.
Clonality	Monoclonal
Clone	OT11C5
Preservative	0.02% Sodium Azide
Isotype	IgG2a
Purity	Immunogen affinity purified
Buffer	PBS (pH 7.3), 1.0% BSA and 50% Glycerol

Product Description	
Description	Novus Biologicals Mouse Serpin B6 Antibody (OT11C5) (NBP2-01650) is a monoclonal antibody validated for use in IHC, WB and Flow. All Novus Biologicals antibodies are covered by our 100% guarantee.
Host	Mouse
Gene ID	5269
Gene Symbol	SERPINB6
Species	Human, Mouse, Monkey
Reactivity Notes	Please note that this antibody is reactive to Mouse and derived from the same host, Mouse. Mouse-On-Mouse blocking reagent may be needed for IHC and ICC experiments to reduce high background signal. You can find these reagents under catalog numbers PK-2200-NB and MP-2400-NB. Please contact Technical Support if you have any questions.
Immunogen	Full length human recombinant protein of human SERPINB6(NP_004559) produced in HEK293T cell.

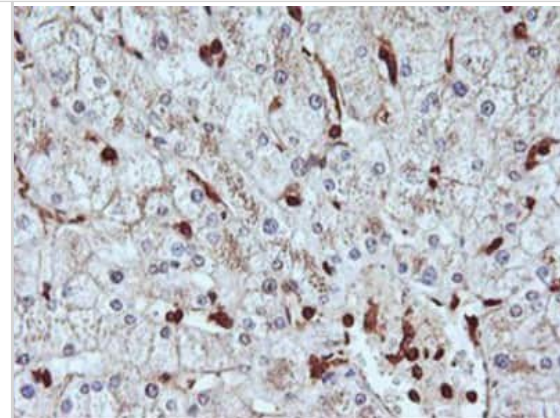
Product Application Details	
Applications	Western Blot, Immunohistochemistry-Paraffin, Flow Cytometry, Immunohistochemistry
Recommended Dilutions	Western Blot 1:500-2000, Flow Cytometry 1:100, Immunohistochemistry 1:150, Immunohistochemistry-Paraffin 1:150

Images

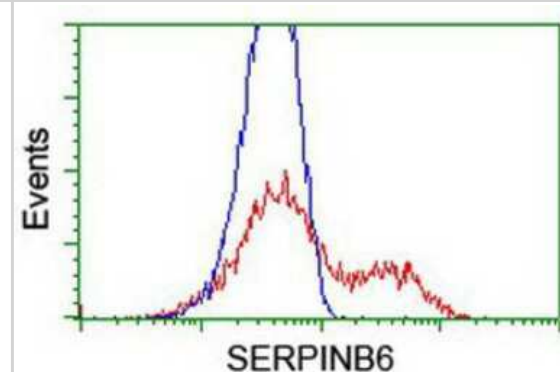
Western Blot: Serpin B6 Antibody (1C5) [NBP2-01650] - Analysis of extracts (10ug) from 9 Human tissue by using anti-SERPINB6 monoclonal antibody at 1:200 (1: Testis; 2: Omentum; 3: Uterus; 4: Breast; 5: Brain; 6: Liver; 7: Ovary; 8: Thyroid gland; 9: colon)



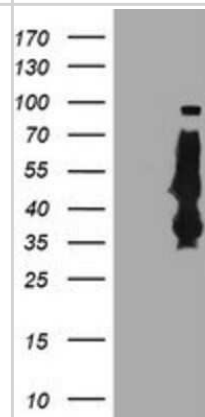
Immunohistochemistry-Paraffin: SerpinB6 Antibody (1C5) [NBP2-01650]
- Staining of paraffin-embedded Human liver tissue using anti-SerpinB6 mouse monoclonal antibody.



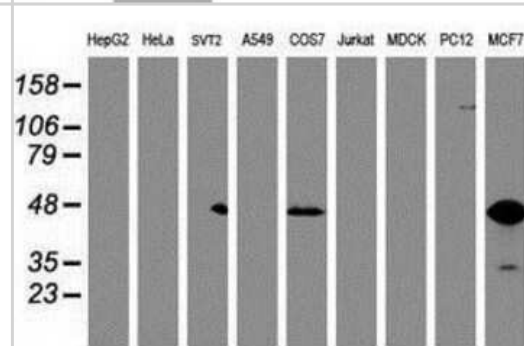
Flow Cytometry: SerpinB6 Antibody (1C5) [NBP2-01650] - HEK293T cells transfected with either overexpression plasmid (Red) or empty vector control plasmid (Blue) were immunostained by anti-SerpinB6 antibody, and then analyzed by flow cytometry.



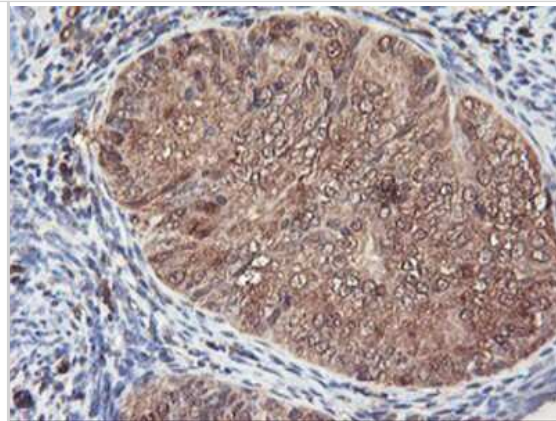
Western Blot: SerpinB6 Antibody (1C5) [NBP2-01650] - HEK293T cells were transfected with the pCMV6-ENTRY control (Left lane) or pCMV6-ENTRY SerpinB6 (Right lane) cDNA for 48 hrs and lysed. Equivalent amounts of cell lysates (5 ug per lane) were separated by SDS-PAGE and immunoblotted with anti-SerpinB6.



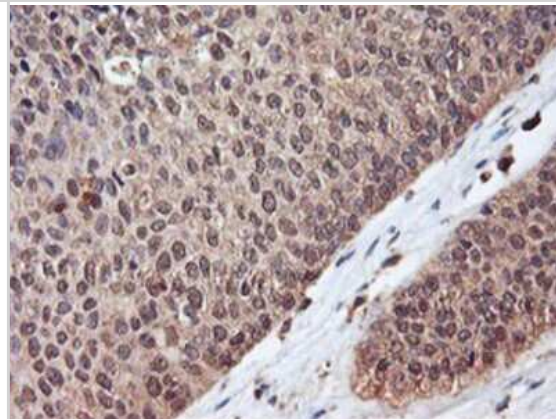
Western Blot: SerpinB6 Antibody (1C5) [NBP2-01650] Analysis of extracts (35ug) from 9 different cell lines by using anti-SerpinB6 monoclonal antibody.



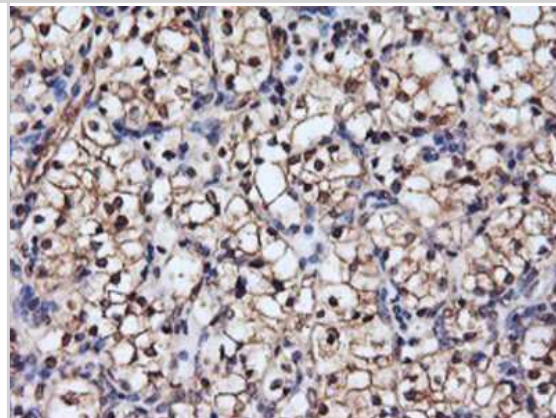
Immunohistochemistry-Paraffin: SerpinB6 Antibody (1C5) [NBP2-01650]
- Staining of paraffin-embedded Adenocarcinoma of Human endometrium tissue using anti-SerpinB6 mouse monoclonal antibody.



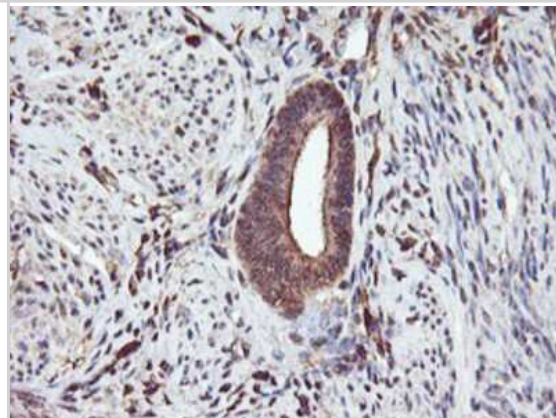
Immunohistochemistry-Paraffin: SerpinB6 Antibody (1C5) [NBP2-01650]
- Staining of paraffin-embedded Carcinoma of Human bladder tissue using anti-SerpinB6 mouse monoclonal antibody.



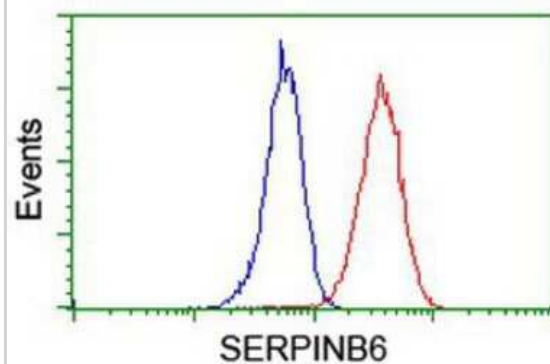
Immunohistochemistry-Paraffin: SerpinB6 Antibody (1C5) [NBP2-01650]
- Staining of paraffin-embedded Carcinoma of Human kidney tissue using anti-SerpinB6 mouse monoclonal antibody.



Immunohistochemistry-Paraffin: SerpinB6 Antibody (1C5) [NBP2-01650]
- Staining of paraffin-embedded Human endometrium tissue using anti-SerpinB6 mouse monoclonal antibody.



Flow Cytometry: SerpinB6 Antibody (1C5) [NBP2-01650] - Analysis of Jurkat cells, using anti-SerpinB6 antibody, (Red), compared to a nonspecific negative control antibody (Blue).



Publications

Halbert D, Domenyuk V, Spetzler D et al. Aptamers and uses thereof United States Patent Application US 9958448 B2 2018-01-01



Novus Biologicals USA

10730 E. Briarwood Avenue
Centennial, CO 80112
USA
Phone: 303.730.1950
Toll Free: 1.888.506.6887
Fax: 303.730.1966
nb-customerservice@bio-techne.com

Bio-Techne Canada

21 Canmotor Ave
Toronto, ON M8Z 4E6
Canada
Phone: 905.827.6400
Toll Free: 855.668.8722
Fax: 905.827.6402
canada.inquires@bio-techne.com

Bio-Techne Ltd

19 Barton Lane
Abingdon Science Park
Abingdon, OX14 3NB, United Kingdom
Phone: (44) (0) 1235 529449
Free Phone: 0800 37 34 15
Fax: (44) (0) 1235 533420
info.EMEA@bio-techne.com

General Contact Information

www.novusbio.com
Technical Support: nb-technical@bio-techne.com
Orders: nb-customerservice@bio-techne.com
General: novus@novusbio.com

Products Related to NBP2-01650

NBP2-33376H	Blue Marker Antibody (6F4-F6) [HRP]
HAF007	Goat anti-Mouse IgG Secondary Antibody [HRP]
NB7539	Goat anti-Mouse IgG (H+L) Secondary Antibody [HRP]
NBP1-96778	Mouse IgG2a Isotype Control (M2A)

Limitations

This product is for research use only and is not approved for use in humans or in clinical diagnosis. Primary Antibodies are guaranteed for 1 year from date of receipt.

For more information on our 100% guarantee, please visit www.novusbio.com/guarantee

Earn gift cards/discounts by submitting a review: www.novusbio.com/reviews/submit/NBP2-01650

Earn gift cards/discounts by submitting a publication using this product:
www.novusbio.com/publications

