

Product Datasheet

KIF2C Antibody (OT11C5)

NBP2-01064

Unit Size: 0.1 ml

Store at -20C. Avoid freeze-thaw cycles.

www.novusbio.com



technical@novusbio.com

Publications: 1

Protocols, Publications, Related Products, Reviews, Research Tools and Images at:
www.novusbio.com/NBP2-01064

Updated 9/9/2025 v.20.1

Earn rewards for product
reviews and publications.

Submit a publication at www.novusbio.com/publications

Submit a review at www.novusbio.com/reviews/destination/NBP2-01064



NBP2-01064

KIF2C Antibody (OT11C5)

Product Information	
Unit Size	0.1 ml
Concentration	0.65 mg/ml
Storage	Store at -20C. Avoid freeze-thaw cycles.
Clonality	Monoclonal
Clone	OT11C5
Preservative	0.02% Sodium Azide
Isotype	IgG1
Purity	Immunogen affinity purified
Buffer	PBS (pH 7.3), 1.0% BSA and 50% Glycerol
Target Molecular Weight	81.1 kDa

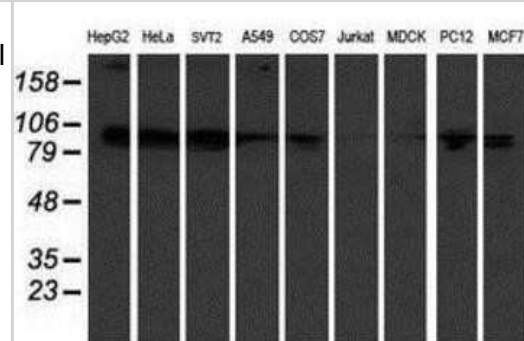
Product Description	
Description	Novus Biologicals Mouse KIF2C Antibody (OT11C5) (NBP2-01064) is a monoclonal antibody validated for use in IHC, WB, Flow and ICC/IF. Anti-KIF2C Antibody: Cited in 1 publication. All Novus Biologicals antibodies are covered by our 100% guarantee.
Host	Mouse
Gene ID	11004
Gene Symbol	KIF2C
Species	Human, Mouse, Rat, Primate, Monkey
Reactivity Notes	Please note that this antibody is reactive to Mouse and derived from the same host, Mouse. Mouse-On-Mouse blocking reagent may be needed for IHC and ICC experiments to reduce high background signal. You can find these reagents under catalog numbers PK-2200-NB and MP-2400-NB. Please contact Technical Support if you have any questions.
Immunogen	Full length human recombinant protein of human KIF2C(NP_006836) produced in HEK293T cell.

Product Application Details	
Applications	Western Blot, Immunohistochemistry-Paraffin, Flow Cytometry, Immunocytochemistry/ Immunofluorescence, Immunohistochemistry
Recommended Dilutions	Western Blot 1:500-2000, Flow Cytometry 1:100, Immunohistochemistry 1:150, Immunocytochemistry/ Immunofluorescence 1:100, Immunohistochemistry-Paraffin 1:150

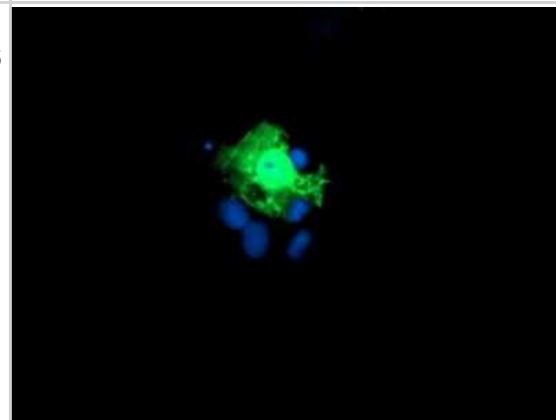


Images

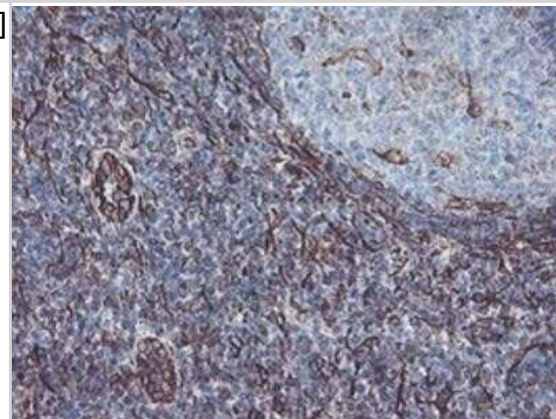
Western Blot: KIF2C Antibody (OT11C5) [NBP2-01064] - Analysis of extracts (35ug) from 9 different cell lines by using anti-KIF2C monoclonal antibody.



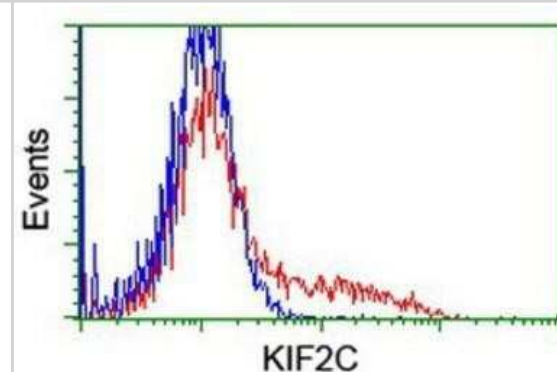
Immunocytochemistry/Immunofluorescence: KIF2C Antibody (OT11C5) [NBP2-01064] - Staining of COS7 cells transiently transfected by pCMV6-ENTRY KIF2C .



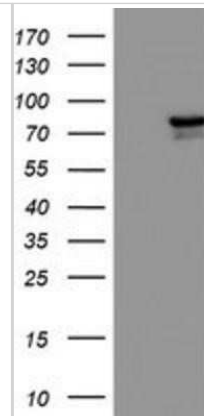
Immunohistochemistry-Paraffin: KIF2C Antibody (OT11C5) [NBP2-01064] - Staining of paraffin-embedded Human tonsil using anti-KIF2C mouse monoclonal antibody.



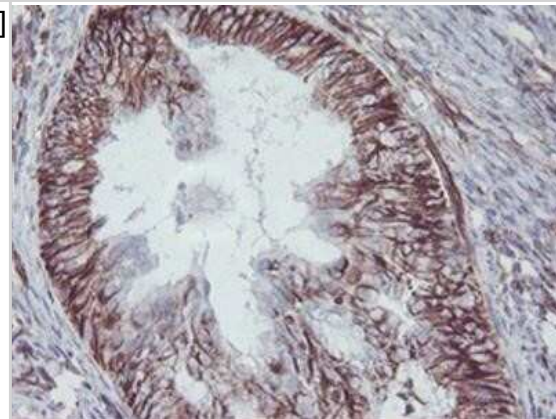
Flow Cytometry: KIF2C Antibody (OT11C5) [NBP2-01064] - HEK293T cells transfected with either overexpression plasmid (Red) or empty vector control plasmid (Blue) were immunostained by anti-KIF2C antibody, and then analyzed by flow cytometry.



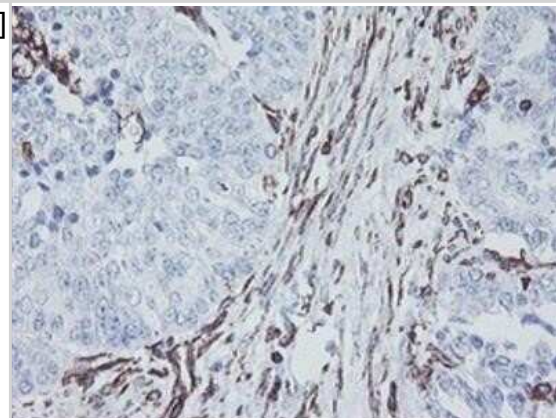
Western Blot: KIF2C Antibody (OT11C5) [NBP2-01064] - HEK293T cells were transfected with the pCMV6-ENTRY control (Left lane) or pCMV6-ENTRY KIF2C (Right lane) cDNA for 48 hrs and lysed. Equivalent amounts of cell lysates (5 ug per lane) were separated by SDS-PAGE and immunoblotted with anti-KIF2C.



Immunohistochemistry-Paraffin: KIF2C Antibody (OT11C5) [NBP2-01064] - Staining of paraffin-embedded Adenocarcinoma of Human endometrium tissue using anti-KIF2C mouse monoclonal antibody.

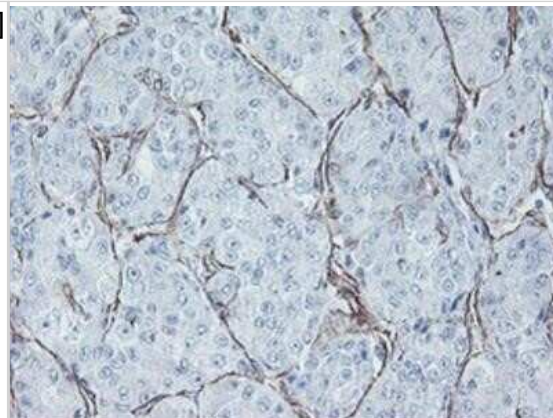


Immunohistochemistry-Paraffin: KIF2C Antibody (OT11C5) [NBP2-01064] - Staining of paraffin-embedded Adenocarcinoma of Human ovary tissue using anti-KIF2C mouse monoclonal antibody.

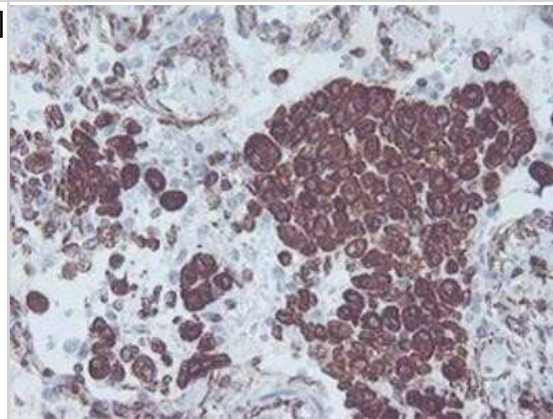


Immunohistochemistry-Paraffin: KIF2C Antibody (OT11C5) [NBP2-01064] - Staining of paraffin-embedded Carcinoma of Human kidney tissue using anti-KIF2C mouse monoclonal antibody.

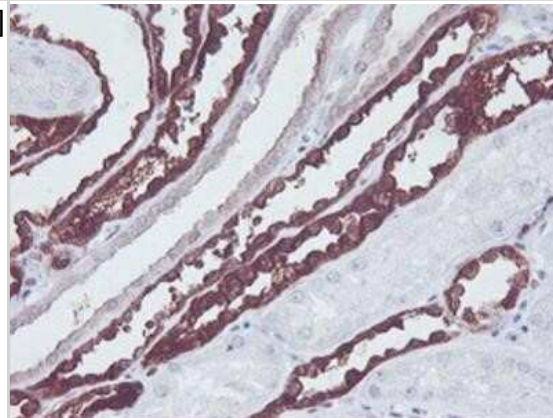
Immunohistochemistry-Paraffin: KIF2C Antibody (OT11C5) [NBP2-01064]
- Staining of paraffin-embedded Carcinoma of Human liver tissue using anti-KIF2C mouse monoclonal antibody.



Immunohistochemistry-Paraffin: KIF2C Antibody (OT11C5) [NBP2-01064]
- Staining of paraffin-embedded Carcinoma of Human lung tissue using anti-KIF2C mouse monoclonal antibody.



Immunohistochemistry-Paraffin: KIF2C Antibody (OT11C5) [NBP2-01064]
- Staining of paraffin-embedded Human Kidney tissue using anti-KIF2C mouse monoclonal antibody.



Publications

Xie B, Zhang L, Zhao H, Bai Q. Poly(ADP-ribose) mediates asymmetric division of mouse oocyte. Cell Res. 2018-02-20 [PMID: 29463901] (Mouse)



Novus Biologicals USA

10730 E. Briarwood Avenue
Centennial, CO 80112
USA
Phone: 303.730.1950
Toll Free: 1.888.506.6887
Fax: 303.730.1966
nb-customerservice@bio-techne.com

Bio-Techne Canada

21 Canmotor Ave
Toronto, ON M8Z 4E6
Canada
Phone: 905.827.6400
Toll Free: 855.668.8722
Fax: 905.827.6402
canada.inquires@bio-techne.com

Bio-Techne Ltd

19 Barton Lane
Abingdon Science Park
Abingdon, OX14 3NB, United Kingdom
Phone: (44) (0) 1235 529449
Free Phone: 0800 37 34 15
Fax: (44) (0) 1235 533420
info.EMEA@bio-techne.com

General Contact Information

www.novusbio.com
Technical Support: nb-technical@bio-techne.com
Orders: nb-customerservice@bio-techne.com
General: novus@novusbio.com

Products Related to NBP2-01064

NBP2-33376H	Blue Marker Antibody (6F4-F6) [HRP]
HAF007	Goat anti-Mouse IgG Secondary Antibody [HRP]
NB7539	Goat anti-Mouse IgG (H+L) Secondary Antibody [HRP]
NBP1-97005-0.5mg	Mouse IgG1 Isotype Control (MG1)

Limitations

This product is for research use only and is not approved for use in humans or in clinical diagnosis. Primary Antibodies are guaranteed for 1 year from date of receipt.

For more information on our 100% guarantee, please visit www.novusbio.com/guarantee

Earn gift cards/discounts by submitting a review: www.novusbio.com/reviews/submit/NBP2-01064

Earn gift cards/discounts by submitting a publication using this product:
www.novusbio.com/publications

