

Product Datasheet

ATP6V1B1 Antibody (OTI1H6)

NBP2-00580

Unit Size: 0.1 ml

Store at -20C. Avoid freeze-thaw cycles.

www.novusbio.com



technical@novusbio.com

Publications: 1

Protocols, Publications, Related Products, Reviews, Research Tools and Images at:
www.novusbio.com/NBP2-00580

Updated 9/9/2025 v.20.1

Earn rewards for product
reviews and publications.

Submit a publication at www.novusbio.com/publications

Submit a review at www.novusbio.com/reviews/destination/NBP2-00580



NBP2-00580

ATP6V1B1 Antibody (OT11H6)

Product Information	
Unit Size	0.1 ml
Concentration	1 mg/ml
Storage	Store at -20C. Avoid freeze-thaw cycles.
Clonality	Monoclonal
Clone	OT11H6
Preservative	0.02% Sodium Azide
Isotype	IgG1
Purity	Immunogen affinity purified
Buffer	PBS (pH 7.3), 1.0% BSA and 50% Glycerol
Target Molecular Weight	56.7 kDa

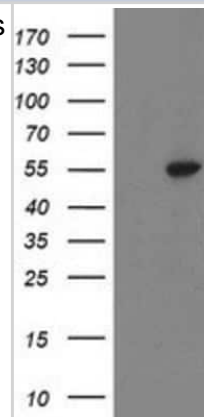
Product Description	
Description	Novus Biologicals Mouse ATP6V1B1 Antibody (OT11H6) (NBP2-00580) is a monoclonal antibody validated for use in IHC, WB, Flow and ICC/IF. Anti-ATP6V1B1 Antibody: Cited in 1 publication. All Novus Biologicals antibodies are covered by our 100% guarantee.
Host	Mouse
Gene ID	525
Gene Symbol	ATP6V1B1
Species	Human, Mouse, Rat
Reactivity Notes	Please note that this antibody is reactive to Mouse and derived from the same host, Mouse. Mouse-On-Mouse blocking reagent may be needed for IHC and ICC experiments to reduce high background signal. You can find these reagents under catalog numbers PK-2200-NB and MP-2400-NB. Please contact Technical Support if you have any questions.
Immunogen	Full length human recombinant protein of human ATP6V1B1 (NP_001683) produced in HEK293T cell.

Product Application Details	
Applications	Western Blot, Immunohistochemistry-Paraffin, Flow Cytometry, Immunocytochemistry/ Immunofluorescence, Immunohistochemistry
Recommended Dilutions	Western Blot 1:2000, Flow Cytometry 1:100, Immunohistochemistry 1:150, Immunocytochemistry/ Immunofluorescence 1:100, Immunohistochemistry-Paraffin 1:150

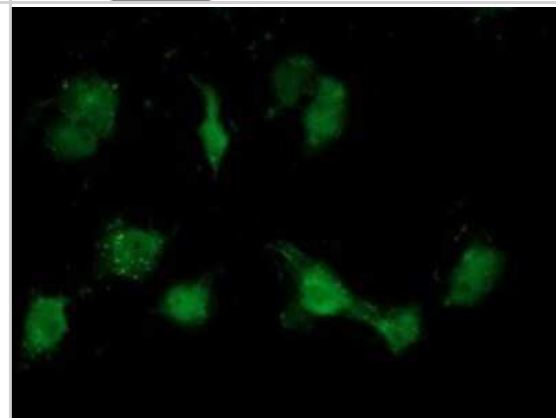


Images

Western Blot: ATP6V1B1 Antibody (1H6) [NBP2-00580] - HEK293T cells were transfected with the pCMV6-ENTRY control (Left lane) or pCMV6-ENTRY ATP6V1B1 (Right lane) cDNA for 48 hrs and lysed. Equivalent amounts of cell lysates (5 ug per lane) were separated by SDS-PAGE and immunoblotted with anti-ATP6V1B1.



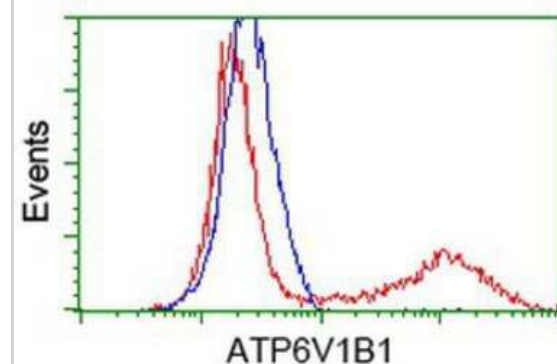
Immunocytochemistry/Immunofluorescence: ATP6V1B1 Antibody (1H6) [NBP2-00580] Staining of COS7 cells transiently transfected by pCMV6-ENTRY ATP6V1B1.



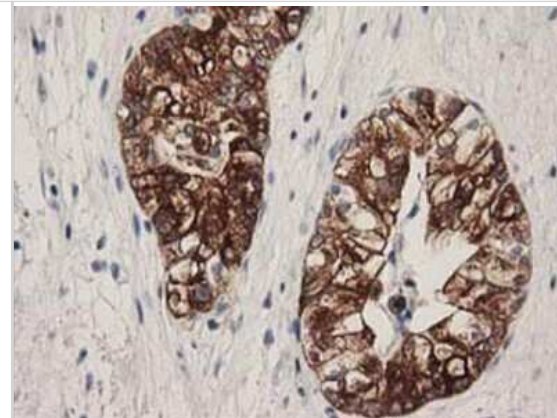
Immunohistochemistry-Paraffin: ATP6V1B1 Antibody (1H6) [NBP2-00580] - Staining of paraffin-embedded Human Kidney tissue using anti-ATP6V1B1 mouse monoclonal antibody.



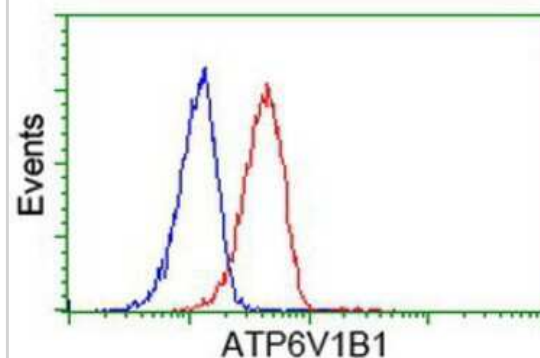
Flow Cytometry: ATP6V1B1 Antibody (1H6) [NBP2-00580] - HEK293T cells transfected with either overexpression plasmid (Red) or empty vector control plasmid (Blue) were immunostained by anti-ATP6V1B1 antibody, and then analyzed by flow cytometry.



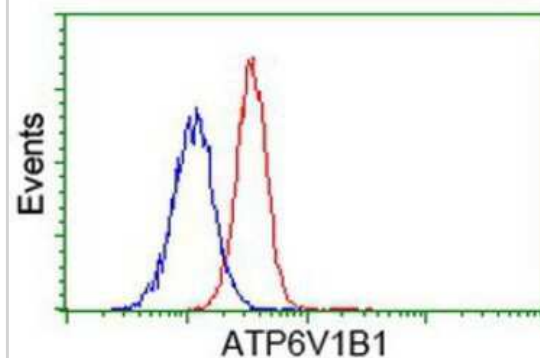
Immunohistochemistry-Paraffin: ATP6V1B1 Antibody (1H6) [NBP2-00580] - Staining of paraffin-embedded Adenocarcinoma of Human ovary tissue using anti-ATP6V1B1 mouse monoclonal antibody.



Flow Cytometry: ATP6V1B1 Antibody (1H6) [NBP2-00580] - Analysis of HeLa cells, using anti-ATP6V1B1 antibody, (Red), compared to a nonspecific negative control antibody (Blue).



Flow Cytometry: ATP6V1B1 Antibody (1H6) [NBP2-00580] - Analysis of Jurkat cells, using anti-ATP6V1B1 antibody, (Red), compared to a nonspecific negative control antibody (Blue).



Publications

Nishie M, Suzuki E, Hattori M et al. Downregulated ATP6V1B1 expression acidifies the intracellular environment of cancer cells leading to resistance to antibody-dependent cellular cytotoxicity *Cancer Immunol Immunother* 2020-09-30 [PMID: 33000417]



Novus Biologicals USA

10730 E. Briarwood Avenue
Centennial, CO 80112
USA
Phone: 303.730.1950
Toll Free: 1.888.506.6887
Fax: 303.730.1966
nb-customerservice@bio-techne.com

Bio-Techne Canada

21 Canmotor Ave
Toronto, ON M8Z 4E6
Canada
Phone: 905.827.6400
Toll Free: 855.668.8722
Fax: 905.827.6402
canada.inquires@bio-techne.com

Bio-Techne Ltd

19 Barton Lane
Abingdon Science Park
Abingdon, OX14 3NB, United Kingdom
Phone: (44) (0) 1235 529449
Free Phone: 0800 37 34 15
Fax: (44) (0) 1235 533420
info.EMEA@bio-techne.com

General Contact Information

www.novusbio.com
Technical Support: nb-technical@bio-techne.com
Orders: nb-customerservice@bio-techne.com
General: novus@novusbio.com

Products Related to NBP2-00580

NBP2-33376H	Blue Marker Antibody (6F4-F6) [HRP]
HAF007	Goat anti-Mouse IgG Secondary Antibody [HRP]
NB7539	Goat anti-Mouse IgG (H+L) Secondary Antibody [HRP]
NBP1-97005-0.5mg	Mouse IgG1 Isotype Control (MG1)

Limitations

This product is for research use only and is not approved for use in humans or in clinical diagnosis. Primary Antibodies are guaranteed for 1 year from date of receipt.

For more information on our 100% guarantee, please visit www.novusbio.com/guarantee

Earn gift cards/discounts by submitting a review: www.novusbio.com/reviews/submit/NBP2-00580

Earn gift cards/discounts by submitting a publication using this product:
www.novusbio.com/publications

