

Product Datasheet

HAND1 Antibody (OTI1G10)

NBP2-00576

Unit Size: 0.1 ml

Store at -20C. Avoid freeze-thaw cycles.

www.novusbio.com



technical@novusbio.com

Publications: 5

Protocols, Publications, Related Products, Reviews, Research Tools and Images at:
www.novusbio.com/NBP2-00576

Updated 9/9/2025 v.20.1

Earn rewards for product
reviews and publications.

Submit a publication at www.novusbio.com/publications

Submit a review at www.novusbio.com/reviews/destination/NBP2-00576



NBP2-00576

HAND1 Antibody (OT11G10)

Product Information	
Unit Size	0.1 ml
Concentration	0.82 mg/ml
Storage	Store at -20C. Avoid freeze-thaw cycles.
Clonality	Monoclonal
Clone	OT11G10
Preservative	0.02% Sodium Azide
Isotype	IgG2b
Purity	Immunogen affinity purified
Buffer	PBS (pH 7.3), 1.0% BSA and 50% Glycerol
Target Molecular Weight	23.4 kDa

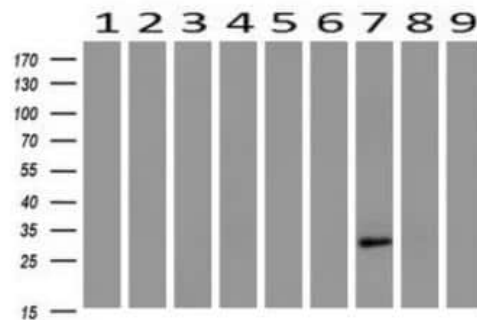
Product Description	
Description	Novus Biologicals Mouse HAND1 Antibody (OT11G10) (NBP2-00576) is a monoclonal antibody validated for use in WB, Flow and ICC/IF. Anti-HAND1 Antibody: Cited in 5 publications. All Novus Biologicals antibodies are covered by our 100% guarantee.
Host	Mouse
Gene ID	9421
Gene Symbol	HAND1
Species	Human, Mouse, Rat
Reactivity Notes	Please note that this antibody is reactive to Mouse and derived from the same host, Mouse. Mouse-On-Mouse blocking reagent may be needed for IHC and ICC experiments to reduce high background signal. You can find these reagents under catalog numbers PK-2200-NB and MP-2400-NB. Please contact Technical Support if you have any questions.
Immunogen	Full length human recombinant protein of human HAND1 (NP_004812) produced in E.coli.

Product Application Details	
Applications	Western Blot, Flow Cytometry, Immunocytochemistry/ Immunofluorescence, In vitro assay
Recommended Dilutions	Western Blot 1:500, Flow Cytometry 1:100, Immunocytochemistry/ Immunofluorescence 1:100, In vitro assay Reported in scientific literature (PMID:33316598)

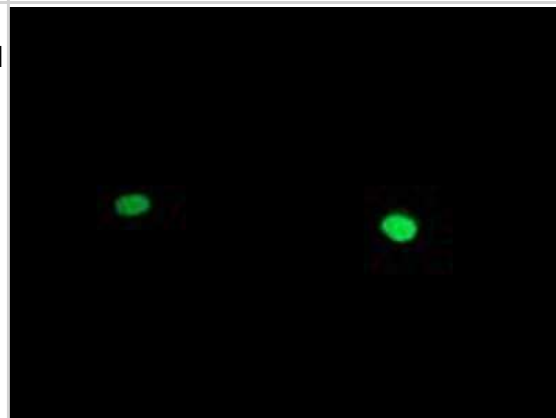


Images

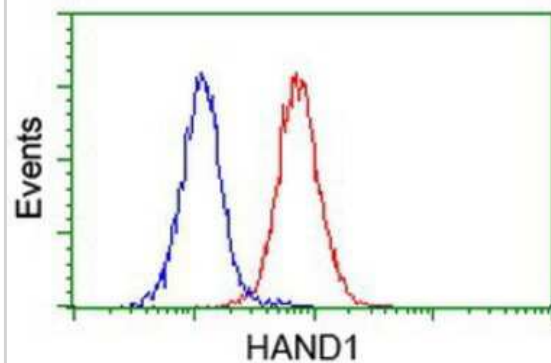
Western Blot: HAND1 Antibody (OT11G10) [NBP2-00576] - Analysis of extracts (10ug) from 9 Human tissue by using anti-HAND1 monoclonal antibody at 1:200 (1: Testis; 2: Omentum; 3: Uterus; 4: Breast; 5: Brain; 6: Liver; 7: Ovary; 8: Thyroid gland; 9: colon).



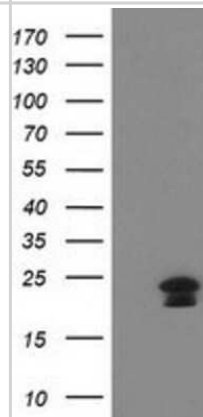
Immunocytochemistry/Immunofluorescence: HAND1 Antibody (OT11G10) [NBP2-00576] - Staining of COS7 cells transiently transfected by pCMV6-ENTRY HAND1.



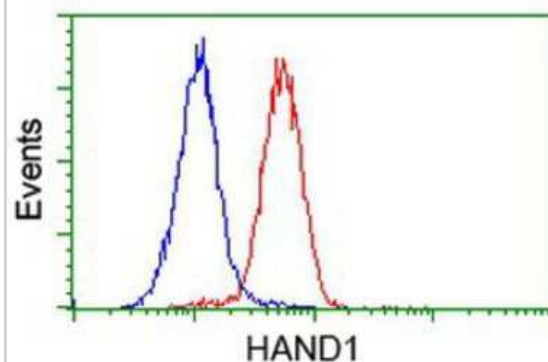
Flow Cytometry: HAND1 Antibody (OT11G10) [NBP2-00576] - Analysis of Jurkat cells, using anti-HAND1 antibody, (Red), compared to a nonspecific negative control antibody (Blue).



Western Blot: HAND1 Antibody (OT11G10) [NBP2-00576] - HEK293T cells were transfected with the pCMV6-ENTRY control (Left lane) or pCMV6-ENTRY HAND1 (Right lane) cDNA for 48 hrs and lysed. Equivalent amounts of cell lysates (5 ug per lane) were separated by SDS-PAGE and immunoblotted with anti-HAND1.



Flow Cytometry: HAND1 Antibody (OTI1G10) [NBP2-00576] - Analysis of HeLa cells, using anti-HAND1 antibody, (Red), compared to a nonspecific negative control antibody (Blue).



Publications

Hashmi SK, Schneider S, Gagne AL et al. Generation of CHOPe003-A ESC line to study an ACTG2 variant affecting smooth muscle development and function Stem Cell Research 2023-09-01 [PMID: 37643495] (In vitro assay, Human)

Leavens, KF;Osorio-Quintero, C;Yeuteuh, EA;Perez-Profeta, FT;Dattoli, AA;Cardenas-Diaz, FL;French, DL;Gadue, P; Generation of a fluorescent mNeonGreen insulin reporter line in the H1 (WA01) hESC background Stem cell research 2024-09-11 [PMID: 39276530]

Garcia, L;Gonzalez, CD;Gagne, A;McGuire, JA;French, D;Takanohashi, A;Almad, A;Vanderver, A;Sase, S; Generation of three induced pluripotent stem cell lines from individuals with Aicardi-Goutières syndrome caused by a c.3019G>A (p.G1007R) autosomal dominant pathogenic variant in ADAR1 Stem cell research 2024-02-01 [PMID: 38181636]

Hashmi S, Schneider S, Gagne A et al. Generation of CHOPi012-A iPSC line from a patient with visceral myopathy-related chronic intestinal pseudo-obstruction Stem Cell Research 2023-08-01 [PMID: 37572398]

Leavens KF, Liao CM, Gagne AL et al. Generation of a double insulin and somatostatin reporter line, SCSe001-A-3, for the advancement of stem cell-derived pancreatic islets Stem cell research 2020-12-08 [PMID: 33316598] (In vitro, Human)



Novus Biologicals USA

10730 E. Briarwood Avenue
Centennial, CO 80112
USA
Phone: 303.730.1950
Toll Free: 1.888.506.6887
Fax: 303.730.1966
nb-customerservice@bio-techne.com

Bio-Techne Canada

21 Canmotor Ave
Toronto, ON M8Z 4E6
Canada
Phone: 905.827.6400
Toll Free: 855.668.8722
Fax: 905.827.6402
canada.inquires@bio-techne.com

Bio-Techne Ltd

19 Barton Lane
Abingdon Science Park
Abingdon, OX14 3NB, United Kingdom
Phone: (44) (0) 1235 529449
Free Phone: 0800 37 34 15
Fax: (44) (0) 1235 533420
info.EMEA@bio-techne.com

General Contact Information

www.novusbio.com
Technical Support: nb-technical@bio-techne.com
Orders: nb-customerservice@bio-techne.com
General: novus@novusbio.com

Products Related to NBP2-00576

NBP2-33376H	Blue Marker Antibody (6F4-F6) [HRP]
HAF007	Goat anti-Mouse IgG Secondary Antibody [HRP]
NB7539	Goat anti-Mouse IgG (H+L) Secondary Antibody [HRP]
NBP2-27231	Mouse IgG2b Isotype Control (MPC-11)

Limitations

This product is for research use only and is not approved for use in humans or in clinical diagnosis. Primary Antibodies are guaranteed for 1 year from date of receipt.

For more information on our 100% guarantee, please visit www.novusbio.com/guarantee

Earn gift cards/discounts by submitting a review: www.novusbio.com/reviews/submit/NBP2-00576

Earn gift cards/discounts by submitting a publication using this product:
www.novusbio.com/publications

