

Product Datasheet

Recombinant Human RGS14 His Protein NBP1-98906-20ug

Unit Size: 20 ug

Store at 4C short term. Aliquot and store at -20C long term. Avoid freeze-thaw cycles.

www.novusbio.com



technical@novusbio.com

Protocols, Publications, Related Products, Reviews, Research Tools and Images at:
www.novusbio.com/NBP1-98906

Updated 5/6/2021 v.20.1

Earn rewards for product
reviews and publications.

Submit a publication at www.novusbio.com/publications

Submit a review at www.novusbio.com/reviews/destination/NBP1-98906



NBP1-98906-20ug

Recombinant Human RGS14 His Protein

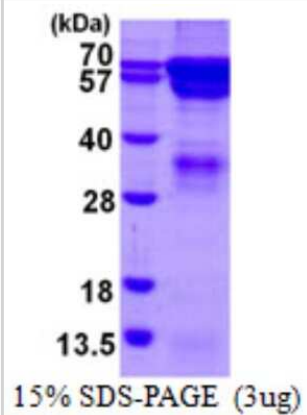
| Product Information | |
|-------------------------|--|
| Unit Size | 20 ug |
| Concentration | 0.5 mg/ml |
| Storage | Store at 4C short term. Aliquot and store at -20C long term. Avoid freeze-thaw cycles. |
| Preservative | No Preservative |
| Purity | >80%, by SDS-PAGE |
| Buffer | 20 mM Tris-HCl buffer (pH7.5), 10% glycerol, 1 mM DTT, 200 mM NaCl |
| Target Molecular Weight | 63.6 kDa |

| Product Description | |
|---------------------|---|
| Description | <p>A recombinant protein with a N-Terminal His-tag and corresponding to the amino acids 1-566 of Human RGS14</p> <p>Source: <i>E.coli</i></p> <p>Amino Acid Sequence: MGSSHHHHHH SGLVPRGSH MPGKPKHLGV PNGRMVLAVS DGELSSTTGP QGQGEGRGSS LSIHSLPSGP SSPFPTEEQP VASWALSFER LLQDPLGLAY FTEFLKKEFS AENVTFWKAC ERFQQIPASD TQQLAQEARN IYQEFLSSQA LSPVNIDRQA WLGEEVLAEP RPD MFRAQQL QIFNLMKFDS YARFVKSPY RECLLAEAEGRPLREPGSSR LGSPDATRKK PKLKPGKSLP LGVEELGQLP PVEGPGGRPL RKSFRRELGG TANAALRRES QGSLNSSASL DLGFLAFVSS KSESHRKS LG STEGESES RP GKYCCVYLPD GTASLALARP GLTIRDMLAG ICEKRGLSLP DIKVYLVGNE QALVLDQDCT VLADQEVRLR NRITFELELT ALERVVRISA KPTKRLQEAL QPILEKHGLS PLEVVLHRPG EKQPLDLGKL VSSVAAQRLV LDTLPGVKIS KARDKSPCRS QGCPPRTQDK ATHPPPASPS SLVKVPSSAT GKRQTCDIEG LVELLN RVQS SGAHDQRGLL RKEDLVLPEF LQLPAQGPSS EETPPQTKSA AQPIGGSLNS TTDSAL</p> |
| Gene ID | 10636 |
| Gene Symbol | RGS14 |
| Species | Human |

| Product Application Details | |
|-----------------------------|----------|
| Applications | SDS-Page |
| Recommended Dilutions | SDS-Page |

Images

SDS-Page: Recombinant Human RGS14 Protein [NBP1-98906] - 15%
SDS-PAGE (3ug)





Novus Biologicals USA

10730 E. Briarwood Avenue
Centennial, CO 80112
USA
Phone: 303.730.1950
Toll Free: 1.888.506.6887
Fax: 303.730.1966
nb-customerservice@bio-techne.com

Bio-Techne Canada

21 Canmotor Ave
Toronto, ON M8Z 4E6
Canada
Phone: 905.827.6400
Toll Free: 855.668.8722
Fax: 905.827.6402
canada.inquires@bio-techne.com

Bio-Techne Ltd

19 Barton Lane
Abingdon Science Park
Abingdon, OX14 3NB, United Kingdom
Phone: (44) (0) 1235 529449
Free Phone: 0800 37 34 15
Fax: (44) (0) 1235 533420
info.EMEA@bio-techne.com

General Contact Information

www.novusbio.com
Technical Support: nb-technical@bio-techne.com
Orders: nb-customerservice@bio-techne.com
General: novus@novusbio.com

Products Related to NBP1-98906-20ug

| | |
|---------------|-----------------------------------|
| NBP2-13227PEP | RGS14 Recombinant Protein Antigen |
| AF467 | EphB2 Antibody [Unconjugated] |
| NBP2-20148 | RGS14 Antibody |
| NBP1-32728 | SUCLG1 Antibody |

Limitations

This product is for research use only and is not approved for use in humans or in clinical diagnosis. This product is guaranteed for 1 year from date of receipt.

For more information on our 100% guarantee, please visit www.novusbio.com/guarantee

Earn gift cards/discounts by submitting a review: www.novusbio.com/reviews/submit/NBP1-98906

Earn gift cards/discounts by submitting a publication using this product:
www.novusbio.com/publications

