

Product Datasheet

Actin Alpha 1 Cardiac Muscle Antibody (22D3) - BSA Free NBP1-97725

Unit Size: 0.1 mg

Store at 4C short term. Aliquot and store at -20C long term. Avoid freeze-thaw cycles.

www.novusbio.com



technical@novusbio.com

Reviews: 1 Publications: 2

Protocols, Publications, Related Products, Reviews, Research Tools and Images at:
www.novusbio.com/NBP1-97725

Updated 11/1/2024 v.20.1

**Earn rewards for product
reviews and publications.**

Submit a publication at www.novusbio.com/publications

Submit a review at www.novusbio.com/reviews/destination/NBP1-97725



NBP1-97725

Actin Alpha 1 Cardiac Muscle Antibody (22D3) - BSA Free

| Product Information | |
|-----------------------------|---|
| Unit Size | 0.1 mg |
| Concentration | 1 mg/ml |
| Storage | Store at 4C short term. Aliquot and store at -20C long term. Avoid freeze-thaw cycles. |
| Clonality | Monoclonal |
| Clone | 22D3 |
| Preservative | 0.09% Sodium Azide |
| Isotype | IgG1 |
| Purity | Protein A or G purified |
| Buffer | PBS, pH 7.2 |
| Product Description | |
| Description | The antibody is shipped at ambient temperature and may be stored at 4C. For prolonged storage prepare appropriate aliquots and store at or below -20C. Prior to use, an aliquot is thawed slowly in the dark at ambient temperature, spun down again and used to prepare working dilutions by adding sterile phosphate buffered saline (PBS, pH 7.2). Repeated thawing and freezing should be avoided. Working dilutions should be stored at 4C, not refrozen, and preferably used the same day. If a slight precipitation occurs upon storage, this should be removed by centrifugation. It will not affect the performance or the concentration of the product. |
| Host | Mouse |
| Gene ID | 70 |
| Gene Symbol | ACTC1 |
| Species | Human, Mouse, Rat, Porcine, Bovine, Goat, Rabbit, Zebrafish |
| Reactivity Notes | The epitope recognized by this antibody is highly conserved; the antibody therefore cross-reacts with many species Bovine reactivity reported in scientific literature (PMID: 30591979). Mouse reactivity reported in scientific literature (PMID: 28624189). |
| Specificity/Sensitivity | This antibody is highly specific for actin alpha 1 (cardiac), and does not cross react with other actin isoforms. |
| Immunogen | Derived by fusion of NS0 Mouse myeloma cells with spleen cells from a BALB/c Mouse immunized with a peptide comprising the N-terminal nonapeptide of Actin Alpha 1 Cardiac Muscle with an acetylated N-terminus (Ac-DDEETTALVC-COOH) coupled to keyhole limpet hemocyanin through the cysteine residue. |
| Product Application Details | |
| Applications | Western Blot, ELISA, Immunocytochemistry/ Immunofluorescence, Immunohistochemistry, Immunohistochemistry-Frozen, Immunohistochemistry-Paraffin |
| Recommended Dilutions | Western Blot 1:1000-1:5000, ELISA 1:100-1:2000, Immunohistochemistry 1:10-1:500, Immunocytochemistry/ Immunofluorescence 1:10-1:500, Immunohistochemistry-Paraffin 1:100-1:1000, Immunohistochemistry-Frozen |



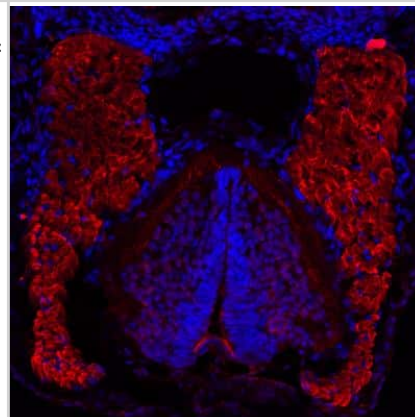
Application Notes

This antibody is suitable for immunohistochemistry on frozen and paraffin-embedded tissues, immunoblotting and ELISA. Optimal antibody dilutions should be determined by titration; recommended range is 1:100 - 1:1000 for immunohistochemistry with avidin-biotinylated Horseradish peroxidase complex (ABC) as detection reagent, and 1:1000 - 1:5000 for immunoblotting applications.

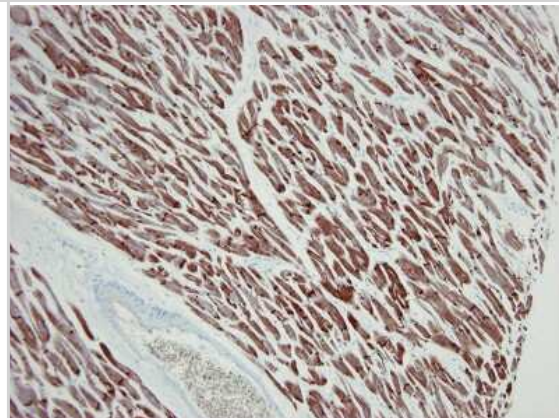


Images

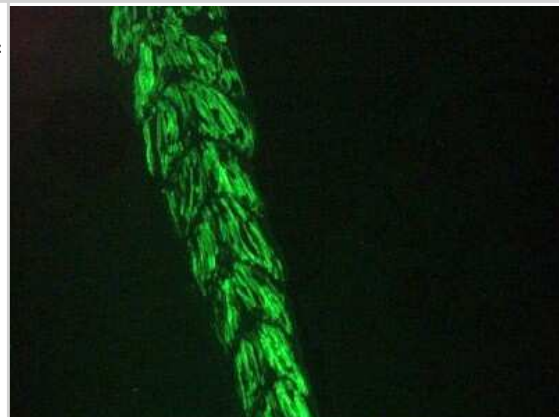
Immunocytochemistry/Immunofluorescence: Actin Alpha 1 Cardiac Muscle Antibody (22D3) [NBP1-97725] - Immunofluorescence staining of developing somites in stage 46 *Xenopus laevis* embryo using Actin Alpha 1 Cardiac Muscle Antibody. Image from verified customer review.



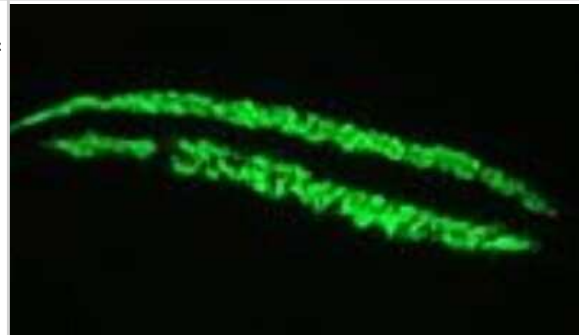
Immunohistochemistry-Paraffin: Actin Alpha 1 Cardiac Muscle Antibody (22D3) [NBP1-97725] - Paraffin section of human cardiac muscle immunostained with 22D3 (1:500)



Immunocytochemistry/Immunofluorescence: Actin Alpha 1 Cardiac Muscle Antibody (22D3) [NBP1-97725] - Immunofluorescence staining of muscle tissue in the tail of 3 days old zebrafish embryo



Immunocytochemistry/Immunofluorescence: Actin Alpha 1 Cardiac Muscle Antibody (22D3) [NBP1-97725] - Immunofluorescence staining of developing myocardium in 1 month old zebrafish embryo



Publications

Chen Chen, Yang Shenglan, Li Huaping et al. Mir30c Is Involved in Diabetic Cardiomyopathy through Regulation of Cardiac Autophagy via BECN1. *Molecular Therapy. Nucleic Acids* 2017-03-29 [PMID: 28624189] (WB, Mouse)

Domke LM, Franke WW. The cell-cell junctions of mammalian testes: II. The lamellar smooth muscle monolayer cells of the peritubular wall are laterally connected by vertical adherens junctions-a novel architectonic cell-cell junction system *Cell Tissue Res.* 2018-12-27 [PMID: 30591979] (ICC/IF, Bovine)





Novus Biologicals USA

10730 E. Briarwood Avenue
Centennial, CO 80112
USA
Phone: 303.730.1950
Toll Free: 1.888.506.6887
Fax: 303.730.1966
nb-customerservice@bio-techne.com

Bio-Techne Canada

21 Canmotor Ave
Toronto, ON M8Z 4E6
Canada
Phone: 905.827.6400
Toll Free: 855.668.8722
Fax: 905.827.6402
canada.inquires@bio-techne.com

Bio-Techne Ltd

19 Barton Lane
Abingdon Science Park
Abingdon, OX14 3NB, United Kingdom
Phone: (44) (0) 1235 529449
Free Phone: 0800 37 34 15
Fax: (44) (0) 1235 533420
info.EMEA@bio-techne.com

General Contact Information

www.novusbio.com
Technical Support: nb-technical@bio-techne.com
Orders: nb-customerservice@bio-techne.com
General: novus@novusbio.com

Products Related to NBP1-97725

| | |
|------------------|--|
| HAF007 | Goat anti-Mouse IgG Secondary Antibody [HRP] |
| NB720-B | Rabbit anti-Mouse IgG (H+L) Secondary Antibody [Biotin] |
| NBP1-97005-0.5mg | Mouse IgG1 Isotype Control (MG1) |
| NBP1-97725UV | Actin Alpha 1 Cardiac Muscle Antibody (22D3) [DyLight 350] |

Limitations

This product is for research use only and is not approved for use in humans or in clinical diagnosis. Primary Antibodies are guaranteed for 1 year from date of receipt.

For more information on our 100% guarantee, please visit www.novusbio.com/guarantee

Earn gift cards/discounts by submitting a review: www.novusbio.com/reviews/submit/NBP1-97725

Earn gift cards/discounts by submitting a publication using this product:
www.novusbio.com/publications

