

Product Datasheet

Horse IgG, Fc Native Protein NBP1-97034

Unit Size: 1 mg

Store at 4C short term. Aliquot and store at -20C long term. Avoid freeze-thaw cycles.

www.novusbio.com



technical@novusbio.com

Protocols, Publications, Related Products, Reviews, Research Tools and Images at:
www.novusbio.com/NBP1-97034

Updated 6/26/2025 v.20.1

Earn rewards for product
reviews and publications.

Submit a publication at www.novusbio.com/publications

Submit a review at www.novusbio.com/reviews/destination/NBP1-97034



NBP1-97034

Horse IgG, Fc Native Protein

Product Information	
Unit Size	1 mg
Concentration	Please see the vial label for concentration. If unlisted please contact technical services.
Storage	Store at 4C short term. Aliquot and store at -20C long term. Avoid freeze-thaw cycles.
Preservative	0.01% Sodium Azide
Purity	Multi-step
Buffer	0.02 M Potassium Phosphate, 0.15 M Sodium Chloride, pH 7.2

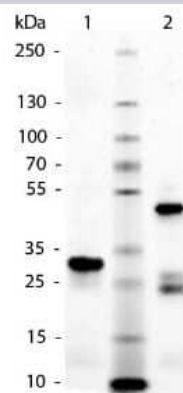
Product Description	
Description	<p>Native Equine Horse IgG, Fc</p> <p>Source: Normal serum</p> <p>Store vial at 4C prior to opening. This product is stable 4C as an undiluted liquid. Dilute only prior to immediate use. For extended storage mix with an equal volume of glycerol, aliquot contents and freeze at -20° C or below. Avoid cycles of freezing and thawing.</p> <p>Prepared from normal serum by a multi-step process which includes delipidation, salt fractionation, ion exchange chromatography and papain digestion followed by chromatographic separation and extensive dialysis.</p>
Species	Equine
Specificity/Sensitivity	Assayed by immunoelectrophoresis resulted in a single precipitin arc against anti-Horse Serum, anti-Horse IgG and anti-Horse IgG F(c). No reaction was observed against anti-Horse IgG F(ab') ₂ or anti-Papain.
Preparation Method	This product was prepared from normal serum by a multi-step process which includes delipidation, salt fractionation, ion exchange chromatography and papain digestion followed by chromatographic separation and extensive dialysis against the buffer stated above. Horse IgG F(c) fragment assayed by immunoelectrophoresis resulted in a single precipitin arc against anti-Horse Serum, anti-Horse IgG and anti-Horse IgG F(c). No reaction was observed against anti-Horse IgG F(ab') ₂ or anti-Papain.

Product Application Details	
Applications	Western Blot, ELISA, SDS-Page
Recommended Dilutions	Western Blot, ELISA, SDS-Page
Application Notes	This product has been tested in SDS-Page and can be utilized as a control or standard reagent in Western Blotting and ELISA experiments. Suggested application: IHC.



Images

SDS-Page: Horse IgG, Fc Native Protein [NBP1-97034] - Lane 1: Horse IgG Fragment Reduced. Lane 2: Horse IgG Fragment Non reduced.
Load: 1.0ug per lane.





Novus Biologicals USA

10730 E. Briarwood Avenue
Centennial, CO 80112
USA
Phone: 303.730.1950
Toll Free: 1.888.506.6887
Fax: 303.730.1966
nb-customerservice@bio-techne.com

Bio-Techne Canada

21 Canmotor Ave
Toronto, ON M8Z 4E6
Canada
Phone: 905.827.6400
Toll Free: 855.668.8722
Fax: 905.827.6402
canada.inquires@bio-techne.com

Bio-Techne Ltd

19 Barton Lane
Abingdon Science Park
Abingdon, OX14 3NB, United Kingdom
Phone: (44) (0) 1235 529449
Free Phone: 0800 37 34 15
Fax: (44) (0) 1235 533420
info.EMEA@bio-techne.com

General Contact Information

www.novusbio.com
Technical Support: nb-technical@bio-techne.com
Orders: nb-customerservice@bio-techne.com
General: novus@novusbio.com

Limitations

This product is for research use only and is not approved for use in humans or in clinical diagnosis. Peptides and proteins are guaranteed for 3 months from date of receipt.

For more information on our 100% guarantee, please visit www.novusbio.com/guarantee

Earn gift cards/discounts by submitting a review: www.novusbio.com/reviews/submit/NBP1-97034

Earn gift cards/discounts by submitting a publication using this product:
www.novusbio.com/publications

