

Product Datasheet

Mouse IgM Kappa Light Chain Isotype Control (MMK) NBP1-96975-0.5mg

Unit Size: 0.5 mg

Store at 4C short term. For extended storage, add an equal volume of glycerol, aliquot and store at -20C or below. Avoid repeated freeze-thaw cycles.

www.novusbio.com



technical@novusbio.com

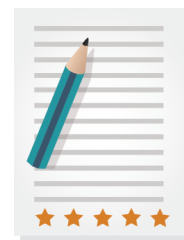
Protocols, Publications, Related Products, Reviews, Research Tools and Images at:
www.novusbio.com/NBP1-96975

Updated 10/23/2024 v.20.1

Earn rewards for product
reviews and publications.

Submit a publication at www.novusbio.com/publications

Submit a review at www.novusbio.com/reviews/destination/NBP1-96975



NBP1-96975-0.5mg

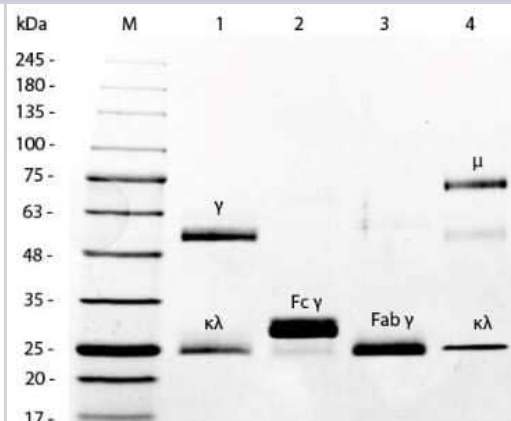
Mouse IgM Kappa Light Chain Isotype Control (MMK)

| Product Information | |
|------------------------------------|---|
| Unit Size | 0.5 mg |
| Concentration | Please contact technical services for concentration. |
| Storage | Store at 4C short term. For extended storage, add an equal volume of glycerol, aliquot and store at -20C or below. Avoid repeated freeze-thaw cycles. |
| Clonality | Monoclonal |
| Clone | MMK |
| Preservative | 0.1% Sodium Azide |
| Isotype | IgM Kappa |
| Purity | Multi-step |
| Buffer | 0.1 M Tris Chloride, 0.5 M Sodium Chloride, pH 8.0 |
| Product Description | |
| Description | <p>This isotype control was prepared from concentrated cell culture supernatant by a multi-step process which includes selective precipitation and tandem molecular sieve chromatography followed by extensive dialysis against the buffer stated above. Assay by immunoelectrophoresis resulted in a single precipitin arc against anti-Mouse IgM mu and anti-Mouse serum.</p> <p>Store vial at 4C prior to opening. Stable at 4C as an undiluted liquid. Dilute only prior to immediate use. For extended storage mix with an equal volume of glycerol, aliquot contents and freeze at -20C or below. Avoid cycles of freezing and thawing.</p> |
| Host | Mouse |
| Species | Mouse |
| Specificity/Sensitivity | Isotyping assay resulted non-reactive with antisera to mouse IgG1, IgG2a, IgG2b, Ig3, IgA |
| Product Application Details | |
| Applications | Western Blot, ELISA, Fluorophore-linked immunosorbent assay, Flow Cytometry, Immunocytochemistry/ Immunofluorescence, SDS-Page |
| Recommended Dilutions | Western Blot 1:100 - 1:2000, Flow Cytometry 1:1000-1:5000, ELISA, Immunocytochemistry/ Immunofluorescence 1:10 - 1:500, SDS-Page, Fluorophore-linked immunosorbent assay 1:100 - 1:2000 |
| Application Notes | This product has been tested in ELISA and can be utilized as a control or standard reagent in Flow cytometry, Western Blotting, and ELISA experiments where determination of sample isotype is important. |



Images

SDS-Page: Mouse IgM Kappa Light Chain Isotype Control (MMK) [NBP1-96975] - SDS-PAGE of Mouse IgM Kappa isotype control. Lane 1: 5 uL Opal Prestained Marker. Lane 2: Reduced Mouse IgG Whole Molecule. Lane 3: Reduced Mouse F(c) Fragment. Lane 4: Reduced Mouse F(ab) Fragment. Lane 5: Mouse IgM Kappa isotype control. Load: 1 ug per lane. Predicted/Observed size: IgG at 50 and 25 kDa; F(c) at 25 kDa; F(ab') at 25 kDa; IgM at 70 and 23 kDa. Observed F(c) Fragment migrates slightly higher.





Novus Biologicals USA

10730 E. Briarwood Avenue
Centennial, CO 80112
USA
Phone: 303.730.1950
Toll Free: 1.888.506.6887
Fax: 303.730.1966
nb-customerservice@bio-techne.com

Bio-Techne Canada

21 Canmotor Ave
Toronto, ON M8Z 4E6
Canada
Phone: 905.827.6400
Toll Free: 855.668.8722
Fax: 905.827.6402
canada.inquires@bio-techne.com

Bio-Techne Ltd

19 Barton Lane
Abingdon Science Park
Abingdon, OX14 3NB, United Kingdom
Phone: (44) (0) 1235 529449
Free Phone: 0800 37 34 15
Fax: (44) (0) 1235 533420
info.EMEA@bio-techne.com

General Contact Information

www.novusbio.com
Technical Support: nb-technical@bio-techne.com
Orders: nb-customerservice@bio-techne.com
General: novus@novusbio.com

Limitations

This product is for research use only and is not approved for use in humans or in clinical diagnosis. Isotype Controls are guaranteed for 1 year from date of receipt.

For more information on our 100% guarantee, please visit www.novusbio.com/guarantee

Earn gift cards/discounts by submitting a review: www.novusbio.com/reviews/submit/NBP1-96975

Earn gift cards/discounts by submitting a publication using this product:
www.novusbio.com/publications

