

# Product Datasheet

## Rabbit IgM Isotype Control

### NBP1-96968

Unit Size: 1 mg

Store at 4C short term. For extended storage, add an equal volume of glycerol, aliquot and store at -20C or below. Avoid repeated freeze-thaw cycles.

[www.novusbio.com](http://www.novusbio.com)



[technical@novusbio.com](mailto:technical@novusbio.com)

Protocols, Publications, Related Products, Reviews, Research Tools and Images at:  
[www.novusbio.com/NBP1-96968](http://www.novusbio.com/NBP1-96968)

Updated 8/24/2025 v.20.1

Earn rewards for product reviews and publications.

Submit a publication at [www.novusbio.com/publications](http://www.novusbio.com/publications)

Submit a review at [www.novusbio.com/reviews/destination/NBP1-96968](http://www.novusbio.com/reviews/destination/NBP1-96968)



**NBP1-96968****Rabbit IgM Isotype Control**

<b>Product Information</b>	
<b>Unit Size</b>	1 mg
<b>Concentration</b>	Please contact technical services for concentration.
<b>Storage</b>	Store at 4C short term. For extended storage, add an equal volume of glycerol, aliquot and store at -20C or below. Avoid repeated freeze-thaw cycles.
<b>Preservative</b>	0.1% Sodium Azide
<b>Isotype</b>	IgM
<b>Purity</b>	Multi-step
<b>Buffer</b>	0.1 M Tris Chloride, 0.5 M Sodium Chloride, pH 8.0

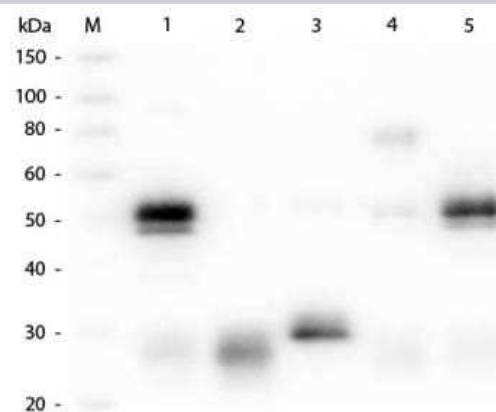
<b>Product Description</b>	
<b>Description</b>	<p>This product was prepared from normal serum by a multi-step process which includes delipidation, selective precipitation and tandem molecular sieve chromatography followed by extensive dialysis against the buffer stated above. Assay by immunoelectrophoresis resulted in a single precipitin arc against anti-Rabbit Serum and anti-Rabbit IgM (u chain specific)</p> <p>Store vial at 4C prior to opening. This product is stable 4C as an undiluted liquid. Dilute only prior to immediate use. For extended storage mix with an equal volume of glycerol, aliquot contents and freeze at -20C or below. Avoid cycles of freezing and thawing.</p>
<b>Host</b>	Rabbit
<b>Gene ID</b>	3507
<b>Gene Symbol</b>	IGHM
<b>Species</b>	Rabbit
<b>Specificity/Sensitivity</b>	No reaction was observed against anti-Rabbit IgG F(c). Some light chain cross-reactivity will occur with anti-Rabbit IgG.

<b>Product Application Details</b>	
<b>Applications</b>	Western Blot, ELISA, Immunohistochemistry, Immunoprecipitation, SDS-Page
<b>Recommended Dilutions</b>	Western Blot 1:100 - 1:2000, ELISA 1:100 - 1:2000, Immunohistochemistry 1:10 - 1:500, Immunoprecipitation 1:10 - 1:500, SDS-Page 1:100 - 1:2000
<b>Application Notes</b>	This product has been tested in SDS-Page and can be utilized as a control or standard reagent in Western Blotting and ELISA experiments.

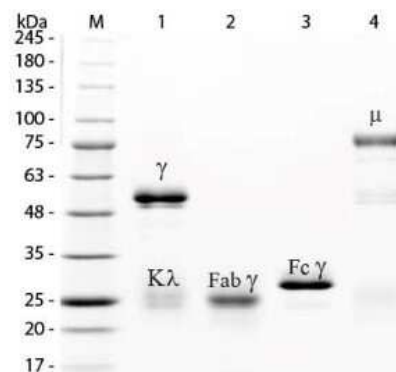


## Images

**Western Blot: Rabbit IgM Isotype Control [NBP1-96968]** - Lane M: 3 uL Molecular Ladder. Lane 1: Rabbit IgG whole molecule (NBP2-36463). Lane 2: Rabbit IgG F(ab) Fragment (NBP1-97016). Lane 3: Rabbit IgG F(c) Fragment (NBP1-96784). Lane 4: Rabbit IgM Whole Molecule (NBP1-96968). Lane 5: Normal Rabbit Serum. All samples were reduced. Load: 50 ng per lane. Blocked in blocking buffer for 30 min at RT. Primary Antibody: Anti-Rabbit IgG (H&L) (GOAT) Antibody (Min X Bv, Ch, Gt, GP, Ham, Hs, Hu, Ms, Rt & Sh Serum Proteins. (NBP1-72732) 1:1,000 for 60 min at RT. Secondary antibody: Anti-Goat IgG (DONKEY) Peroxidase Conjugated Antibody 1:40,000 in blocking buffer for 30 min at RT. Predicted/Observed Size: 25 and 50 kDa for Rabbit IgG and Serum, 25 kDa for F(c) and F(ab), 70 and 23 kDa for IgM. Rabbit F(c) migrates slightly higher.



**SDS-Page: Rabbit IgM Isotype Control [NBP1-96968]** - Lane M: 3 uL Opal Prestained Marker. Lane 1: Reduced Rabbit IgG Whole Molecule. Lane 2: Reduced Rabbit IgG F(ab) Fragment. Lane 3: Reduced Rabbit IgG F(c) Fragment. Lane 4: Reduced Rabbit IgM Whole Molecule. Load: 1 ug for F(ab) and F(c); 1.2 ug for IgG and IgM.





### **Novus Biologicals USA**

10730 E. Briarwood Avenue  
Centennial, CO 80112  
USA  
Phone: 303.730.1950  
Toll Free: 1.888.506.6887  
Fax: 303.730.1966  
nb-customerservice@bio-techne.com

### **Bio-Techne Canada**

21 Canmotor Ave  
Toronto, ON M8Z 4E6  
Canada  
Phone: 905.827.6400  
Toll Free: 855.668.8722  
Fax: 905.827.6402  
canada.inquires@bio-techne.com

### **Bio-Techne Ltd**

19 Barton Lane  
Abingdon Science Park  
Abingdon, OX14 3NB, United Kingdom  
Phone: (44) (0) 1235 529449  
Free Phone: 0800 37 34 15  
Fax: (44) (0) 1235 533420  
info.EMEA@bio-techne.com

### **General Contact Information**

www.novusbio.com  
Technical Support: nb-technical@bio-  
techne.com  
Orders: nb-customerservice@bio-techne.com  
General: novus@novusbio.com

### **Products Related to NBP1-96968**

---

H00003507-P01-10ug	Recombinant Human IgM GST (N-Term) Protein
NB100-524	NOD2 Antibody (2D9) - BSA Free
MAB9435-100	IgM Antibody (2123A) [Unconjugated]
7268-CT-100	CTLA-4 [Unconjugated]

---

### **Limitations**

This product is for research use only and is not approved for use in humans or in clinical diagnosis. Isotype Controls are guaranteed for 1 year from date of receipt.

For more information on our 100% guarantee, please visit [www.novusbio.com/guarantee](http://www.novusbio.com/guarantee)

Earn gift cards/discounts by submitting a review: [www.novusbio.com/reviews/submit/NBP1-96968](http://www.novusbio.com/reviews/submit/NBP1-96968)

Earn gift cards/discounts by submitting a publication using this product:  
[www.novusbio.com/publications](http://www.novusbio.com/publications)

