

# Product Datasheet

## CAMTA1 Antibody - BSA Free

### NBP1-93620

Unit Size: 0.1 ml

Store at 4C short term. Aliquot and store at -20C long term. Avoid freeze-thaw cycles.

[www.novusbio.com](http://www.novusbio.com)



[technical@novusbio.com](mailto:technical@novusbio.com)

**Publications: 13**

Protocols, Publications, Related Products, Reviews, Research Tools and Images at:  
[www.novusbio.com/NBP1-93620](http://www.novusbio.com/NBP1-93620)

Updated 4/21/2026 v.20.1

**Earn rewards for product reviews and publications.**

Submit a publication at [www.novusbio.com/publications](http://www.novusbio.com/publications)

Submit a review at [www.novusbio.com/reviews/destination/NBP1-93620](http://www.novusbio.com/reviews/destination/NBP1-93620)



**NBP1-93620**

CAMTA1 Antibody - BSA Free

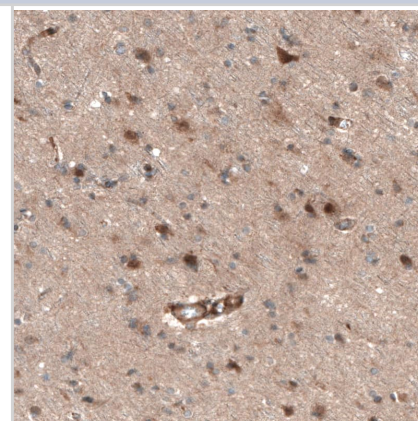
Product Information	
Unit Size	0.1 ml
Concentration	Concentrations vary lot to lot. See vial label for concentration. If unlisted please contact technical services.
Storage	Store at 4C short term. Aliquot and store at -20C long term. Avoid freeze-thaw cycles.
Clonality	Polyclonal
Preservative	0.02% Sodium Azide
Isotype	IgG
Purity	Affinity purified
Buffer	PBS (pH 7.2) and 40% Glycerol

Product Description	
Host	Rabbit
Gene ID	23261
Gene Symbol	CAMTA1
Species	Human
Immunogen	This antibody was developed against Recombinant Protein corresponding to amino acids: ESLSMLPTNVSEELVLSTTLTGGRKIPETTMNFDPCFLNNPKQGQTYGGGGL KAEMVSSNIRHSPPGERSFSFTTVLTKEIKTE

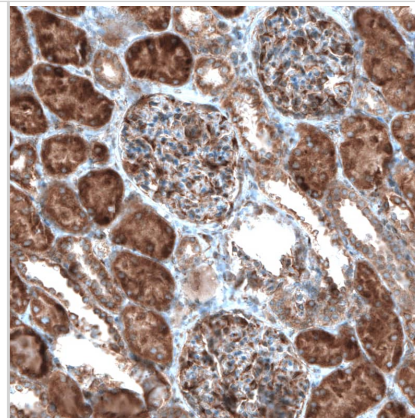
Product Application Details	
Applications	Immunohistochemistry-Paraffin, Immunohistochemistry
Recommended Dilutions	Immunohistochemistry 1:50 - 1:200, Immunohistochemistry-Paraffin 1:50 - 1:200
Application Notes	IHC-Paraffin, HIER pH 6 retrieval is recommended.

**Images**

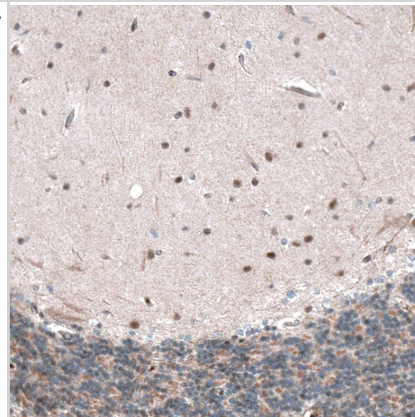
Staining of human cerebral cortex shows weak to moderate nuclear and cytoplasmic positivity in neurons.



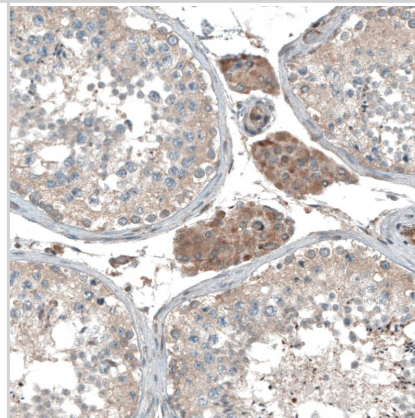
Staining of human kidney shows moderate cytoplasmic positivity in cells in glomeruli and tubuli.



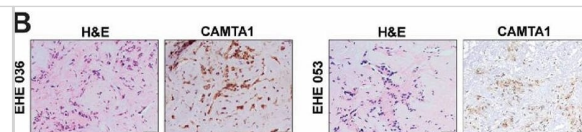
Staining of human cerebellum shows weak to moderate nuclear positivity in cells in molecular layer.



Staining of human testis shows moderate cytoplasmic positivity in Leydig cells.



Derivation of EHE primary cell cultures and demonstration of the TAZ-CAMTA1 fusion protein (WWTR1-CAMTA1 fusion gene). (A) Table containing patient characteristics associated with EHE tumors. (B) H&E staining and immunohistochemical evaluation of CAMTA1 expression in EHE 036 and EHE 053. Images taken at 200X. (C) Schematic outlining generation and characterization of the extended primary cell cultures. (D) Image of primary cell cultures in a monolayer with insets at higher power. Arrow denotes tumor fragment of EHE 036. (E) Schematic representation of RNA Breakpoint for EHE 001 determined by RT-PCR. Codons with their associated amino acids are shown below. (F) Schematic representation of RNA Breakpoint for EHE 036 by anchored multiplex PCR from tumor RNA. Codons with their associated amino acid are shown below. (G) qRT-PCR utilizing custom probes hybridizing to the EHE 001 and EHE 036 breakpoints respectively, with HPAEC as a control. (H) Single-cell RNA sequencing of early passage EHE 001 (passage number 6) demonstrating expression of CAMTA1. (I) Single-cell RNA sequencing of early passage EHE 001 (passage number 6) demonstrating expression of FLI1. (J) Western blot, after enriching for the nuclear fraction, probing for TAZ in HPAEC control and the EHE extended primary cell cultures. Error bars were used to define one standard deviation. For all panels, \*\*\*\* $p < 0.0001$ , \*\*\*  $p < 0.001$ , \*\*  $p < 0.01$ , \* $p < 0.05$ . Image collected and cropped by CiteAb from the following open publication (<https://pubmed.ncbi.nlm.nih.gov/41073554>), licensed under a CC-BY license. Not internally tested by Novus Biologicals.



## Publications

Scalora N, DeWane G, Drebot Y et al. EHE cell cultures are a platform for mechanistic and therapeutic investigation. Scientific reports 2025-10-10 [PMID: 41073554]

Mega Lahori, Amir Dehghani, Christina Wilson, Wyanne Law, Narasimhan Agaram, Rajmohan Murali, Carlie Sigel  
Cytopathologic features of epithelioid hemangioendothelioma including touch imprints for rapid on-site evaluation  
CytoJournal 2023-09-04 [PMID: 37810439]

Boštjan Luzar, Eleni Ieremia, Cristina R Antonescu, Lei Zhang, Eduardo Calonje Cutaneous intravascular epithelioid hemangioma. A clinico-pathological and molecular study of 21 cases Modern pathology : an official journal of the United States and Canadian Academy of Pathology, Inc 2021-08-06 [PMID: 32094426]

Yoo Y, Shin J, Jun E et al. Proposed diagnostic and prognostic markers of primary malignant hepatic vascular neoplasms Research Square 2023-05-18 (Immunohistochemistry, Human)

Papke DJ, Sholl LM, Doyle LA et al. Gastroesophageal Glomus Tumors: Clinicopathologic and Molecular Genetic Analysis of 26 Cases With a Proposal for Malignancy Criteria The American journal of surgical pathology 2022-06-15 [PMID: 35703141]

Wei H, Zhen T, Tuo Y et al. Clinicopathologic and molecular features of vascular tumors in a series of 118 cases American journal of translational research 2022-05-15 [PMID: 35702134] (IHC-P, Human)

Ravindran A, Said S, Shi M Thinking Beyond the Marrow: Deceptive Presentation of a Rare Malignant Neoplasm Mayo Clinic Proceedings 2022-07-01 [PMID: 35787860] (IF/IHC)

Vazzano JL, Patton A, Tinoco G, Iwenofu OH Primary Intranodal Epithelioid Hemangioendothelioma with Molecular Confirmation International journal of surgical pathology 2022-01-31 [PMID: 35098778]

Jung H, Kim HN, Jang Y et al. CAMTA-1 Expression in 24 Cases of Hepatic Epithelioid Hemangioendothelioma in a Single Institute: Diagnostic Utility for Differential Diagnosis from Hepatic Angiosarcoma In Vivo 2019-07-30 [PMID: 31662570] (IF/IHC, Human)

Lotfalla Mira M, Folpe Andrew L, Fritchie Karen J et al. Hepatic YAP1-TFE3 Rearranged Epithelioid Hemangioendothelioma. Case Reports in Gastrointestinal Medicine 2019-06-02 [PMID: 31341686] (IF/IHC)

Tsukamoto Y, Futani H, Watanabe T et al. Two cases of WWTR1-CAMTA-1 fusion-positive epithelioid hemangioendotheliomas with extremely different outcomes Human Pathology: Case Reports 2018-11-01 (IHC-P, Human)

Mollet IG, Malm HA, Wendt A et al. Integrator of Stress Responses Calmodulin Binding Transcription Activator 1 (Camta1) Regulates miR-212/miR-132 Expression and Insulin Secretion J. Biol. Chem. 2016-07-08 [PMID: 27402838] (ICC/IF, Rat)

More publications at <http://www.novusbio.com/NBP1-93620>



### **Novus Biologicals USA**

10730 E. Briarwood Avenue  
Centennial, CO 80112  
USA  
Phone: 303.730.1950  
Toll Free: 1.888.506.6887  
Fax: 303.730.1966  
nb-customerservice@bio-techne.com

### **Bio-Techne Canada**

21 Canmotor Ave  
Toronto, ON M8Z 4E6  
Canada  
Phone: 905.827.6400  
Toll Free: 855.668.8722  
Fax: 905.827.6402  
canada.inquires@bio-techne.com

### **Bio-Techne Ltd**

19 Barton Lane  
Abingdon Science Park  
Abingdon, OX14 3NB, United Kingdom  
Phone: (44) (0) 1235 529449  
Free Phone: 0800 37 34 15  
Fax: (44) (0) 1235 533420  
info.EMEA@bio-techne.com

### **General Contact Information**

www.novusbio.com  
Technical Support: nb-technical@bio-techne.com  
Orders: nb-customerservice@bio-techne.com  
General: novus@novusbio.com

### **Products Related to NBP1-93620**

---

NBP1-93620PEP	CAMTA1 Recombinant Protein Antigen
HAF008	Goat anti-Rabbit IgG Secondary Antibody [HRP]
NB7160	Goat anti-Rabbit IgG (H+L) Secondary Antibody [HRP]
NBP2-24891	Rabbit IgG Isotype Control

---

### **Limitations**

This product is for research use only and is not approved for use in humans or in clinical diagnosis. Primary Antibodies are guaranteed for 1 year from date of receipt.

For more information on our 100% guarantee, please visit [www.novusbio.com/guarantee](http://www.novusbio.com/guarantee)

Earn gift cards/discounts by submitting a review: [www.novusbio.com/reviews/submit/NBP1-93620](http://www.novusbio.com/reviews/submit/NBP1-93620)

Earn gift cards/discounts by submitting a publication using this product:  
[www.novusbio.com/publications](http://www.novusbio.com/publications)

