

# Product Datasheet

## Monkey CXCL8/IL-8 ELISA Kit (Colorimetric) NBP1-92706

Unit Size: 96 Tests

Storage of components varies. See protocol for specific instructions.

[www.novusbio.com](http://www.novusbio.com)



[technical@novusbio.com](mailto:technical@novusbio.com)

Protocols, Publications, Related Products, Reviews, Research Tools and Images at:  
[www.novusbio.com/NBP1-92706](http://www.novusbio.com/NBP1-92706)

Updated 3/5/2026 v.20.1

Earn rewards for product  
reviews and publications.

Submit a publication at [www.novusbio.com/publications](http://www.novusbio.com/publications)

Submit a review at [www.novusbio.com/reviews/destination/NBP1-92706](http://www.novusbio.com/reviews/destination/NBP1-92706)



**NBP1-92706****Monkey CXCL8/IL-8 ELISA Kit (Colorimetric)**

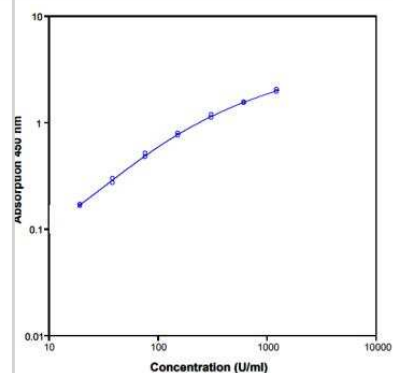
<b>Product Information</b>	
<b>Unit Size</b>	96 Tests
<b>Concentration</b>	Concentration is not relevant for this product. Please see the protocols for proper use of this product.
<b>Storage</b>	Storage of components varies. See protocol for specific instructions.

<b>Product Description</b>	
<b>Description</b>	The monkey IL-8 ELISA is an enzyme-linked immunosorbent assay for the quantitative detection of monkey IL-8
<b>Gene ID</b>	3576
<b>Gene Symbol</b>	CXCL8
<b>Species</b>	Monkey
<b>Kit Components</b>	Aluminium pouch(es) with a Microwell Plate coated with Monoclonal Antibody (murine) to monkey IL-8, Biotin-Conjugate (anti-IL-8 polyclonal antibody), Streptavidin-HRP and Sample Diluent, lyophilized, Aluminium pouch(es) with a monkey IL-8 Standard curve (coloured), Wash Buffer Concentrate 20x (phosphate-buffered saline with 1% Tween 20), Substrate Solution (tetramethylbenzidine), Sample Diluent (Use when an external predilution of the samples is needed), Stop Solution (1M Phosphoric acid), Adhesive Plate Covers
<b>Standard Curve Range</b>	19.5 - 1,250 U/mL
<b>Sensitivity</b>	3.0 U/mL
<b>Inter Assay</b>	CV% < 8.7%
<b>Intra Assay</b>	CV% < 6.3%
<b>Assay Type</b>	Sandwich ELISA
<b>Suitable Sample Type</b>	Cell culture supernatant, serum (baboon, cynomolgus)
<b>Sample Volume</b>	50 uL

<b>Product Application Details</b>	
<b>Applications</b>	ELISA
<b>Recommended Dilutions</b>	ELISA

**Images**

ELISA: CXCL8/IL-8 ELISA Kit [Biotin] [NBP1-92706] - Standard curve





### **Novus Biologicals USA**

10730 E. Briarwood Avenue  
Centennial, CO 80112  
USA  
Phone: 303.730.1950  
Toll Free: 1.888.506.6887  
Fax: 303.730.1966  
nb-customerservice@bio-techne.com

### **Bio-Techne Canada**

21 Canmotor Ave  
Toronto, ON M8Z 4E6  
Canada  
Phone: 905.827.6400  
Toll Free: 855.668.8722  
Fax: 905.827.6402  
canada.inquires@bio-techne.com

### **Bio-Techne Ltd**

19 Barton Lane  
Abingdon Science Park  
Abingdon, OX14 3NB, United Kingdom  
Phone: (44) (0) 1235 529449  
Free Phone: 0800 37 34 15  
Fax: (44) (0) 1235 533420  
info.EMEA@bio-techne.com

### **General Contact Information**

www.novusbio.com  
Technical Support: nb-technical@bio-techne.com  
Orders: nb-customerservice@bio-techne.com  
General: novus@novusbio.com

### **Limitations**

This product is for research use only and is not approved for use in humans or in clinical diagnosis. ELISA Kits are guaranteed for 6 months from date of receipt.

For more information on our 100% guarantee, please visit [www.novusbio.com/guarantee](http://www.novusbio.com/guarantee)

Earn gift cards/discounts by submitting a review: [www.novusbio.com/reviews/submit/NBP1-92706](http://www.novusbio.com/reviews/submit/NBP1-92706)

Earn gift cards/discounts by submitting a publication using this product:  
[www.novusbio.com/publications](http://www.novusbio.com/publications)

