

Product Datasheet

SGLT2/SLC5A2 Antibody - BSA Free NBP1-92384

Unit Size: 0.1 ml

Store at 4C short term. Aliquot and store at -20C long term. Avoid freeze-thaw cycles.

www.novusbio.com



technical@novusbio.com

Reviews: 2 Publications: 13

Protocols, Publications, Related Products, Reviews, Research Tools and Images at:
www.novusbio.com/NBP1-92384

Updated 12/2/2025 v.20.1

**Earn rewards for product
reviews and publications.**

Submit a publication at www.novusbio.com/publications

Submit a review at www.novusbio.com/reviews/destination/NBP1-92384



NBP1-92384

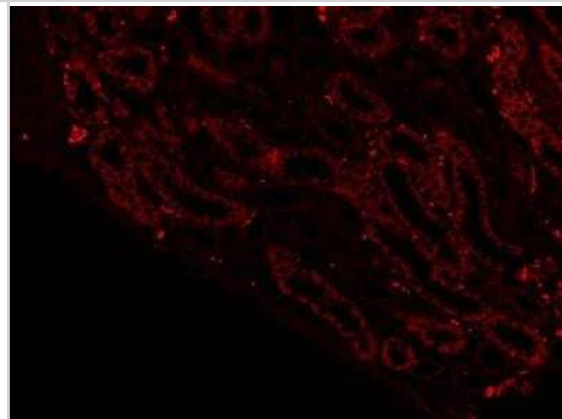
SGLT2/SLC5A2 Antibody - BSA Free

Product Information	
Unit Size	0.1 ml
Concentration	Concentrations vary lot to lot. See vial label for concentration. If unlisted please contact technical services.
Storage	Store at 4C short term. Aliquot and store at -20C long term. Avoid freeze-thaw cycles.
Clonality	Polyclonal
Preservative	0.02% Sodium Azide
Isotype	IgG
Purity	Affinity purified
Buffer	PBS (pH 7.2) and 40% Glycerol
Product Description	
Description	Novus Biologicals Rabbit SGLT2/SLC5A2 Antibody - BSA Free (NBP1-92384) is a polyclonal antibody validated for use in IHC, WB and ICC/IF. Anti-SGLT2/SLC5A2 Antibody: Cited in 13 publications. All Novus Biologicals antibodies are covered by our 100% guarantee.
Host	Rabbit
Gene ID	6524
Gene Symbol	SLC5A2
Species	Human, Mouse, Canine, Tenrec
Reactivity Notes	Use in Mouse reported in scientific literature (PMID:33712686). Canine reactivity reported from a verified customer review. Tenrec reactivity reported from a verified customer review.
Immunogen	This antibody was developed against Recombinant Protein corresponding to amino acids: FHEVGGYSGLFDKYLGAATSLTVSEDPVAVGNISSFCYRPRPDSYHLL
Product Application Details	
Applications	Western Blot, Immunohistochemistry-Paraffin, Immunocytochemistry/Immunofluorescence, Immunohistochemistry
Recommended Dilutions	Western Blot Reactivity reported in scientific literature (PMID: 25894829)., Immunohistochemistry 1:1000 - 1:2500, Immunocytochemistry/Immunofluorescence Reactivity reported in scientific literature (PMID: 25894829)., Immunohistochemistry-Paraffin 1:1000 - 1:2500
Application Notes	For IHC-Paraffin, HIER pH 6 retrieval is recommended.

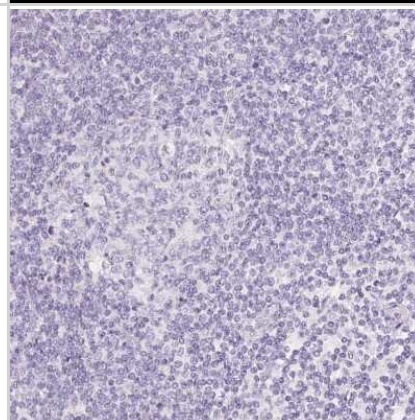


Images

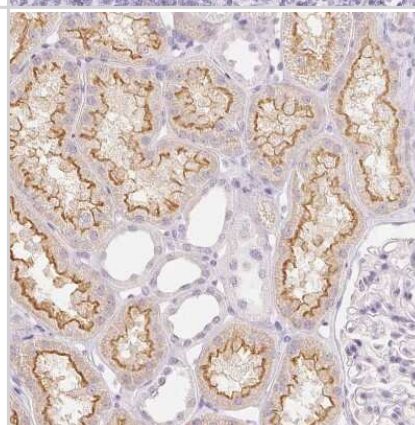
Immunohistochemistry-Paraffin: SGLT2/SLC5A2 Antibody [NBP1-92384]
- SGLT2/SLC5A2 used at 1:50 on a tenrec kidney. SGLT2/SLC5A2 antibody was used on paraffin-embedded kidney tissue at a concentration of 20ug/mL and left at 4C overnight. HIER was performed in Citrate buffer (pH6) for two hours at 75C. Image from verified customer review.



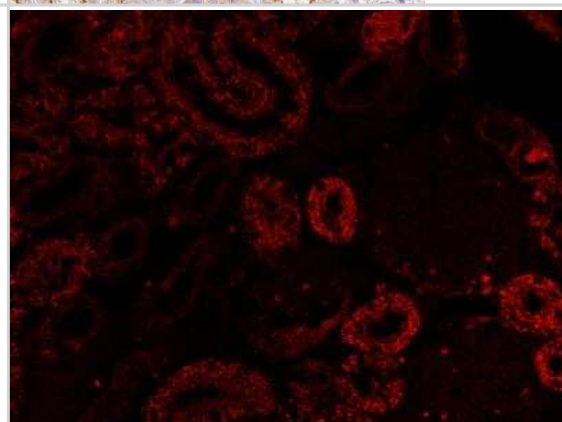
Immunohistochemistry-Paraffin: SGLT2/SLC5A2 Antibody [NBP1-92384]
- Staining of human lymph node shows no positivity in non-germinal center cells as expected.



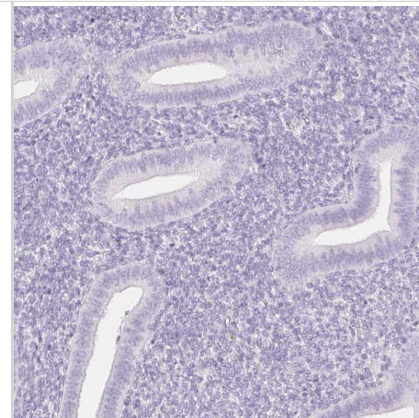
Immunohistochemistry-Paraffin: SGLT2/SLC5A2 Antibody [NBP1-92384]
- Staining of human kidney shows moderate positivity in apical membrane in cells in tubules.



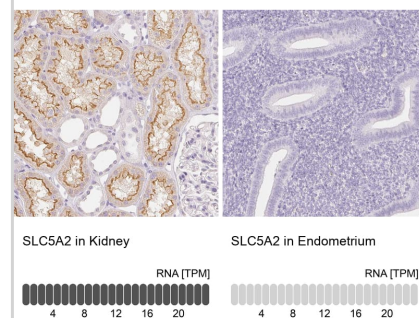
Immunohistochemistry-Paraffin: SGLT2/SLC5A2 Antibody [NBP1-92384]
- Analysis of SGLT2/SLC5A2 antibody on Canine kidney tissue. HIER was done in pH 6 (Citrate Buffer) for two hours at 75C, and primary antibody was put on at 1:100 overnight at 4C. Image was taken at 40X. Image from verified customer review.



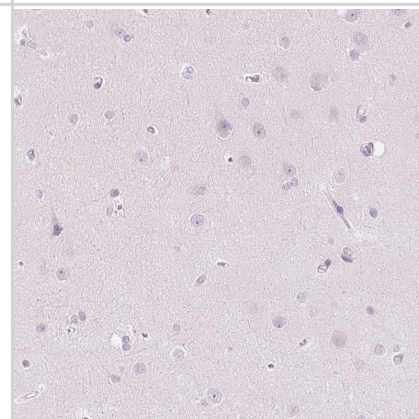
Staining of human endometrium shows no positivity in glandular cells as expected.



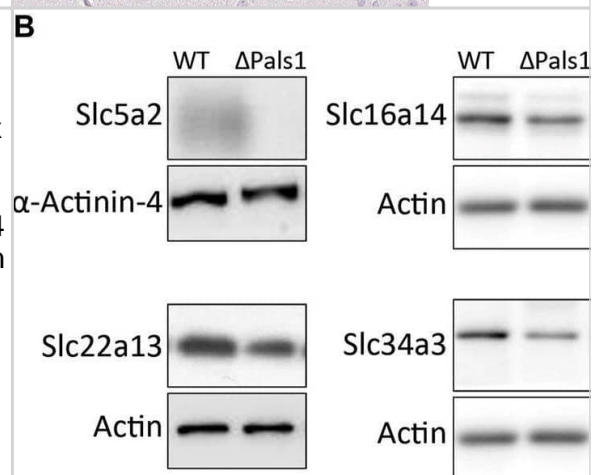
Analysis in human kidney and endometrium tissues using NBP1-92384 antibody. Corresponding SLC5A2 RNA-seq data are presented for the same tissues.



Staining of human cerebral cortex shows no positivity in neurons as expected.



Pals1-dependent expression of abundant members of the solute carrier family members in renal nephrons. (A) Quantitative real-time RT PCR analysis of mRNA levels derived from Pals1-deficient kidneys (Δ Pals1) and their wildtype (WT) littermate controls. In Pals1-deficient kidneys, six SLC genes summarized in Table 1 show a reduced mRNA expression in Pals1-deficient kidneys. (B) Western blotting confirmed downregulation on protein level for Slc5a2, Slc16a14, Slc22a13 and Slc43a3. α -Actinin-4 and Actin served as loading controls. (C) Immunohistologic analysis from kidney sections derived from WT and Pals1-deficient mice. The glucose transporter Slc5a2 (magenta) co-localizes with the Lotus tetragonolobus Lectin coupled to fluorescein (LTL, green). The lectin LTL is a marker for proximal tubules in mammalian kidneys. DAPI (blue) labels the nuclei of cells. Although downregulated, Slc5a2 glucose transporters localize at the brush border membrane of proximal tubules in Pals1-deficient mice. Bar = 10 μ m. Image collected and cropped by CiteAb from the following open publication (<https://pubmed.ncbi.nlm.nih.gov/35252349>), licensed under a CC-BY license. Not internally tested by Novus Biologicals.



Publications

Schwertheim S, Alhardan M, Manka PP et al. Higher pNRF2, SOCS3, IRF3, and RIG1 Tissue Protein Expression in NASH Patients versus NAFL Patients: pNRF2 Expression Is Concomitantly Associated with Elevated Fasting Glucose Levels *Journal of Personalized Medicine* 2023-07-18 [PMID: 37511764] (Western Blot, Immunocytochemistry/ Immunofluorescence, Human)

Yu H, Wang M, Yu J et al. Evaluation of the efficacy of *Abelmoschus manihot* (L.) on diabetic nephropathy by analyzing biomarkers in the glomeruli and proximal and distal convoluted tubules of the kidneys *Frontiers in Pharmacology* 2023-08-01 [PMID: 37587982] (Western Blot, Immunocytochemistry/ Immunofluorescence, Human)

Herat LY, Matthews JR, Hibbs M et al. SGLT1/2 inhibition improves glycemic control and multi-organ protection in type 1 diabetes *iScience* 2023-08-18 [PMID: 37520739] (Western Blot, Immunocytochemistry/ Immunofluorescence, Human)

Shim B, Stokum JA, Moyer M et al. Canagliflozin, an Inhibitor of the Na(+)-Coupled D-Glucose Cotransporter, SGLT2, Inhibits Astrocyte Swelling and Brain Swelling in Cerebral Ischemia Cells *2023-09-06* [PMID: 37759444] (Western Blot, Immunocytochemistry/ Immunofluorescence, Human)

Berghaus C, Groh AC, Breljak D et al. Impact of Pals1 on Expression and Localization of Transporters Belonging to the Solute Carrier Family *Frontiers in Molecular Biosciences* 2022-02-16 [PMID: 35252349] (Western Blot, Immunocytochemistry/ Immunofluorescence, Human)

Suh HN, Lee JY, Kang HJ et al. A Comparison Between GalT(-/-);hCD39;hCD55 and GalT(-/-);hCD39;hCD46;hCD55;TBM Pig Kidneys Transplanted in Nonhuman Primates *Cell Transplant* 2024-01-16 [PMID: 38229498]

Du J, Gu J, Deng J et al. The expression and survival significance of sodium glucose transporters in pancreatic cancer *BMC cancer* 2022-01-28 [PMID: 35090421] (IHC-P, Human)

Dai C, Walker J. T, et al. Dapagliflozin Does Not Directly Affect Human alpha or beta Cells. *Endocrinology* 2020-08-01 [PMID: 32428240] (IF/IHC, Mouse)

Chiba Y, Murakami R, Matsumoto K et al. Glucose, Fructose, and Urate Transporters in the Choroid Plexus Epithelium *International Journal of Molecular Sciences* 2020-09-30 [PMID: 33008107] (IF/IHC, Human)

Chiba Y, Sugiyama Y, Nishi N et al. Sodium/glucose cotransporter 2 is expressed in choroid plexus epithelial cells and ependymal cells in human and mouse brains *Neuropathology* 2020-10-01 [PMID: 32488949] (IHC-P, Human)

Mitsuhata Y, Abe T, Misaki K et al. Cyst formation in proximal renal tubules caused by dysfunction of the microtubule minus-end regulator CAMSAP3 *Scientific reports* 2021-03-12 [PMID: 33712686] (Mouse)

Scafoglio CR, Villegas B, Abdelhady G et al. Sodium-glucose transporter 2 is a diagnostic and therapeutic target for early-stage lung adenocarcinoma. *Sci Transl Med.* 2018-11-14 [PMID: 30429355] (IHC-P, Human)

More publications at <http://www.novusbio.com/NBP1-92384>



Novus Biologicals USA

10730 E. Briarwood Avenue
Centennial, CO 80112
USA
Phone: 303.730.1950
Toll Free: 1.888.506.6887
Fax: 303.730.1966
nb-customerservice@bio-techne.com

Bio-Techne Canada

21 Canmotor Ave
Toronto, ON M8Z 4E6
Canada
Phone: 905.827.6400
Toll Free: 855.668.8722
Fax: 905.827.6402
canada.inquires@bio-techne.com

Bio-Techne Ltd

19 Barton Lane
Abingdon Science Park
Abingdon, OX14 3NB, United Kingdom
Phone: (44) (0) 1235 529449
Free Phone: 0800 37 34 15
Fax: (44) (0) 1235 533420
info.EMEA@bio-techne.com

General Contact Information

www.novusbio.com
Technical Support: nb-technical@bio-techne.com
Orders: nb-customerservice@bio-techne.com
General: novus@novusbio.com

Products Related to NBP1-92384

NBP1-92384PEP	SGLT2/SLC5A2 Recombinant Protein Antigen
NBP2-33376H	Blue Marker Antibody (6F4-F6) [HRP]
HAF008	Goat anti-Rabbit IgG Secondary Antibody [HRP]
NB7160	Goat anti-Rabbit IgG (H+L) Secondary Antibody [HRP]
NBP2-24891	Rabbit IgG Isotype Control

Limitations

This product is for research use only and is not approved for use in humans or in clinical diagnosis. Primary Antibodies are guaranteed for 1 year from date of receipt.

For more information on our 100% guarantee, please visit www.novusbio.com/guarantee

Earn gift cards/discounts by submitting a review: www.novusbio.com/reviews/submit/NBP1-92384

Earn gift cards/discounts by submitting a publication using this product:
www.novusbio.com/publications

