

Product Datasheet

Pit1 Antibody - BSA Free NBP1-92273

Unit Size: 0.1 ml

Store at 4C short term. Aliquot and store at -20C long term. Avoid freeze-thaw cycles.

www.novusbio.com



technical@novusbio.com

Publications: 20

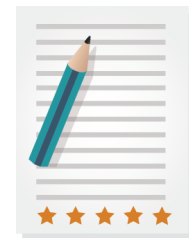
Protocols, Publications, Related Products, Reviews, Research Tools and Images at:
www.novusbio.com/NBP1-92273

Updated 3/4/2026 v.20.1

**Earn rewards for product
reviews and publications.**

Submit a publication at www.novusbio.com/publications

Submit a review at www.novusbio.com/reviews/destination/NBP1-92273



NBP1-92273

Pit1 Antibody - BSA Free

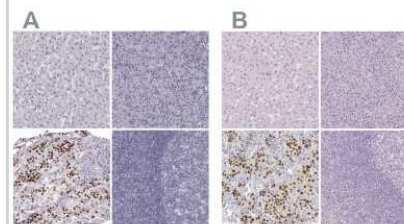
Product Information	
Unit Size	0.1 ml
Concentration	Concentrations vary lot to lot. See vial label for concentration. If unlisted please contact technical services.
Storage	Store at 4C short term. Aliquot and store at -20C long term. Avoid freeze-thaw cycles.
Clonality	Polyclonal
Preservative	0.02% Sodium Azide
Isotype	IgG
Purity	Affinity purified
Buffer	PBS (pH 7.2) and 40% Glycerol

Product Description	
Host	Rabbit
Gene ID	5449
Gene Symbol	POU1F1
Species	Human, Mouse
Reactivity Notes	Mouse reactivity reported in scientific literature (PMID:32958754)
Immunogen	This antibody was developed against Recombinant Protein corresponding to amino acids: CKLKAILSKWLEEAQVVGALYNEKVGANERKRKRRTTISIAAKDALERHFGEQN KPSSQEIMRMAE

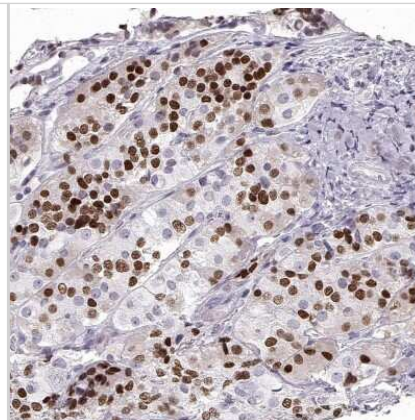
Product Application Details	
Applications	Immunohistochemistry-Paraffin, Immunohistochemistry
Recommended Dilutions	Immunohistochemistry 1:500 - 1:1000, Immunohistochemistry-Paraffin 1:500 - 1:1000
Application Notes	IHC-P, Retrieval method: HIER pH6

Images

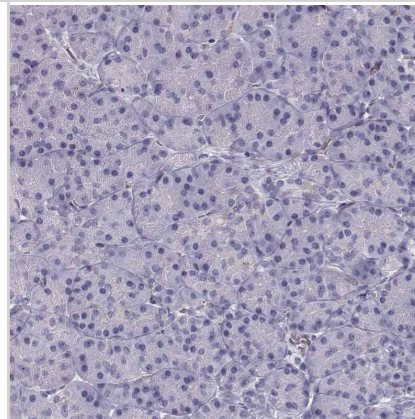
Immunohistochemistry-Paraffin: Pit1 Antibody [NBP1-92273] - Staining of human liver, pancreas, pituitary gland and tonsil using Anti-POU1F1 antibody NBP1-92273 (A) shows similar protein distribution across tissues to independent antibody NBP2-55357 (B).



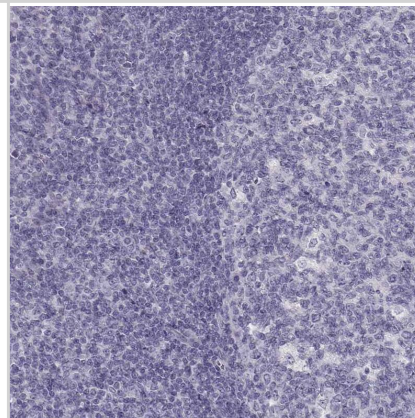
Immunohistochemistry-Paraffin: Pit1 Antibody [NBP1-92273] - Staining of human pituitary gland shows moderate to strong nuclear positivity in neuroendocrine cells in the anterior lobe.



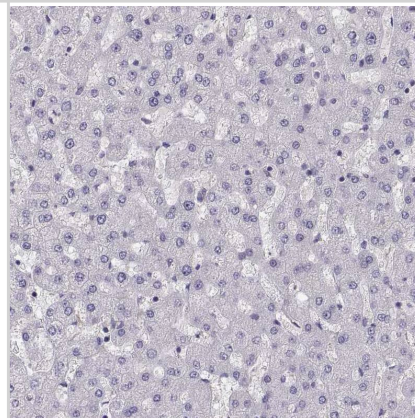
Staining of human pancreas shows no positivity in exocrine glandular cells as expected.



Staining of human tonsil shows no positivity in non-germinal center cells as expected.



Staining of human liver shows no positivity in hepatocytes as expected.



Publications

Jotanovic J, Boldt HB, Burton M, Andersen MS et Al. Genome-wide methylation profiling differentiates benign from aggressive and metastatic pituitary neuroendocrine tumors *Acta Neuropathol* 2024-11-23 [PMID: 39580368]

Jotanovic J, Tebani A, Hekmati N, Sivertsson Å et Al. Transcriptome Analysis Reveals Distinct Patterns Between the Invasive and Noninvasive Pituitary Neuroendocrine Tumors *J Endocr Soc* 2024-03-20 [PMID: 38505563]

Martínez-Hernández R, Serrano-Somavilla A, Fernández-Contreras R et Al. Primary Cilia as a Tumor Marker in Pituitary Neuroendocrine Tumors *Mod Pathol* 2024-03-19 [PMID: 38508520]

Chiloiro S, Moroni R, Giampietro A et al. The multi-biomarker acro-TIME score predicts fg-SRLs response: preliminary results of a retrospective acromegaly cohort *The Journal of clinical endocrinology and metabolism* 2023-11-17 [PMID: 37975821]

Duan S, Sawyer TW, Sontz RA et al. GFAP-directed Inactivation of Men1 Exploits Glial Cell Plasticity in Favor of Neuroendocrine Reprogramming Cellular and molecular gastroenterology and hepatology 2022-07-11 [PMID: 35835391] (IHC-P, Mouse)

Casar-Borota, O, Boldt, H B Et al. Corticotroph Aggressive Pituitary Tumors and Carcinomas Frequently Harbor ATRX Mutations. *J Clin Endocrinol Metab* 2021-03-25 [PMID: 33106857] (WB, ICC/IF, Human)

Hong SW, Kim SH, Lim SH et al. Clinical Relevance of New World Health Organization Classification System for Pituitary Adenomas: A Validation Study With 2-Year Experience *Frontiers in oncology* 2021-09-13 [PMID: 34589436] (IF/IHC, Human)

Tjornstrand A, Casar-Borota O, Heurling K, et al. Pre- and postoperative 68 Ga-DOTATOC positron emission tomography for hormone-secreting pituitary neuroendocrine tumors *Clinical endocrinology* 2021-01-23 [PMID: 33484167] (IHC-P, Human)

Taniguchi-Ponciano K, Pena-Martínez E, Silva-Roman G et al. Proteomic and Transcriptomic Analysis Identify Spliceosome as a Significant Component of the Molecular Machinery in the Pituitary Tumors Derived from POU1F1- and NR5A1-Cell Lineages *Genes* 2020-11-27 [PMID: 33261069] (IHC-P, Human)

Details:

Immunohistochemical analysis of normal/tumor human pituitary tissue.

Taniguchi-Ponciano K, Andonegui-Elguera S, PeNa-Martínez E et al. Transcriptome and methylome analysis reveals three cellular origins of pituitary tumors *Sci Rep* 2020-11-09 [PMID: 33168897] (IHC-P, Human)

Details:

Immunohistochemical analysis of paraffin-embedded human pituitary adenomas.

Abboud D, Daly AF, Dupuis N et al. GPR101 drives growth hormone hypersecretion and gigantism in mice via constitutive activation of Gs and Gq/11 *Nat Commun* 2020-09-21 [PMID: 32958754] (IHC-P, Mouse)

Neou M, Villa C, Armignacco R, et al. Pangenomic Classification of Pituitary Neuroendocrine Tumors *Cancer Cell* 2019-12-11 [PMID: 31883967]

More publications at <http://www.novusbio.com/NBP1-92273>





Novus Biologicals USA

10730 E. Briarwood Avenue
Centennial, CO 80112
USA
Phone: 303.730.1950
Toll Free: 1.888.506.6887
Fax: 303.730.1966
nb-customerservice@bio-techne.com

Bio-Techne Canada

21 Canmotor Ave
Toronto, ON M8Z 4E6
Canada
Phone: 905.827.6400
Toll Free: 855.668.8722
Fax: 905.827.6402
canada.inquires@bio-techne.com

Bio-Techne Ltd

19 Barton Lane
Abingdon Science Park
Abingdon, OX14 3NB, United Kingdom
Phone: (44) (0) 1235 529449
Free Phone: 0800 37 34 15
Fax: (44) (0) 1235 533420
info.EMEA@bio-techne.com

General Contact Information

www.novusbio.com
Technical Support: nb-technical@bio-techne.com
Orders: nb-customerservice@bio-techne.com
General: novus@novusbio.com

Products Related to NBP1-92273

NBP1-92273PEP	Pit1 Recombinant Protein Antigen
HAF008	Goat anti-Rabbit IgG Secondary Antibody [HRP]
NB7160	Goat anti-Rabbit IgG (H+L) Secondary Antibody [HRP]
NBP2-24891	Rabbit IgG Isotype Control

Limitations

This product is for research use only and is not approved for use in humans or in clinical diagnosis. Primary Antibodies are guaranteed for 1 year from date of receipt.

For more information on our 100% guarantee, please visit www.novusbio.com/guarantee

Earn gift cards/discounts by submitting a review: www.novusbio.com/reviews/submit/NBP1-92273

Earn gift cards/discounts by submitting a publication using this product:
www.novusbio.com/publications

