

Product Datasheet

mpp8 Antibody - BSA Free NBP1-92135

Unit Size: 0.1 ml

Store at 4C short term. Aliquot and store at -20C long term. Avoid freeze-thaw cycles.

www.novusbio.com



technical@novusbio.com

Protocols, Publications, Related Products, Reviews, Research Tools and Images at:
www.novusbio.com/NBP1-92135

Updated 12/2/2025 v.20.1

Earn rewards for product
reviews and publications.

Submit a publication at www.novusbio.com/publications

Submit a review at www.novusbio.com/reviews/destination/NBP1-92135



NBP1-92135

mpp8 Antibody - BSA Free

Product Information	
Unit Size	0.1 ml
Concentration	Concentrations vary lot to lot. See vial label for concentration. If unlisted please contact technical services.
Storage	Store at 4C short term. Aliquot and store at -20C long term. Avoid freeze-thaw cycles.
Clonality	Polyclonal
Preservative	0.02% Sodium Azide
Isotype	IgG
Purity	Affinity purified
Buffer	PBS (pH 7.2) and 40% Glycerol

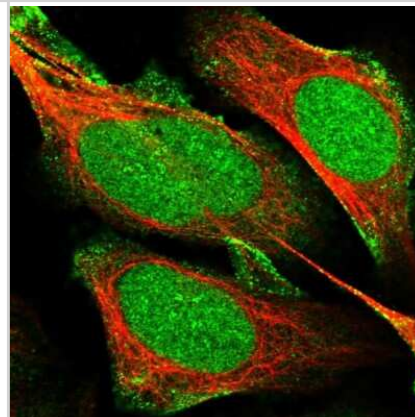
Product Description	
Description	Novus Biologicals Rabbit mpp8 Antibody - BSA Free (NBP1-92135) is a polyclonal antibody validated for use in IHC, WB and ICC/IF. All Novus Biologicals antibodies are covered by our 100% guarantee.
Host	Rabbit
Gene ID	54737
Gene Symbol	MPHOSPH8
Species	Human
Immunogen	This antibody was developed against Recombinant Protein corresponding to amino acids: GLEHGFEEKPLDSAMSAEEDTDVRGRRKKKTPRKAEDTRENKLENKNAFLEK KTVPKKQRNQDRSKSAEELEKLMPVSAQTPKGRRLSGEERGLWSTDSAEEDK ETKRNESKE

Product Application Details	
Applications	Western Blot, Immunohistochemistry-Paraffin, Immunocytochemistry/Immunofluorescence, Immunohistochemistry
Recommended Dilutions	Western Blot 0.04-0.4 ug/ml, Immunohistochemistry 1:500 - 1:1000, Immunocytochemistry/ Immunofluorescence 0.25-2 ug/ml, Immunohistochemistry-Paraffin 1:500 - 1:1000
Application Notes	For IHC-Paraffin, HIER pH 6 retrieval is recommended. Immunocytochemistry/Immunofluorescence Fixation Permeabilization: Use PFA/Triton X-100.

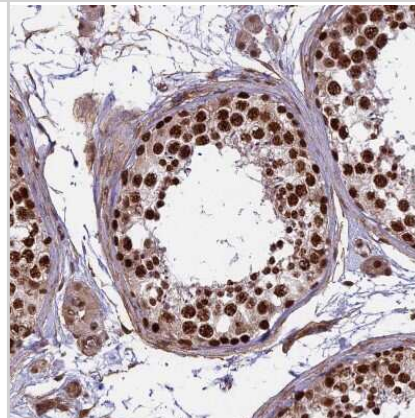


Images

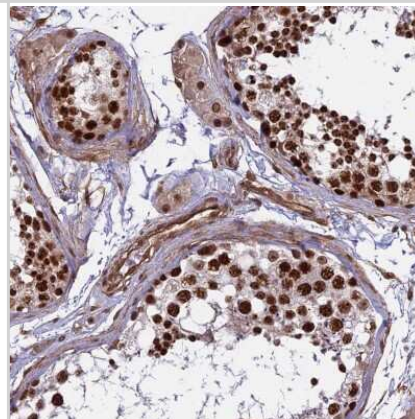
Immunocytochemistry/Immunofluorescence: mpp8 Antibody [NBP1-92135] - Staining of human cell line U-2 OS shows localization to nucleus, nucleoli and plasma membrane.



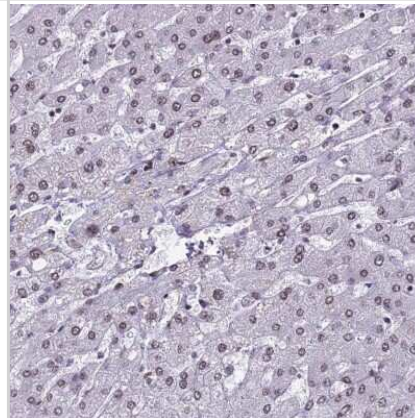
Immunohistochemistry-Paraffin: mpp8 Antibody [NBP1-92135] - Staining of human testis shows strong nuclear positivity in cells in seminiferous ducts.



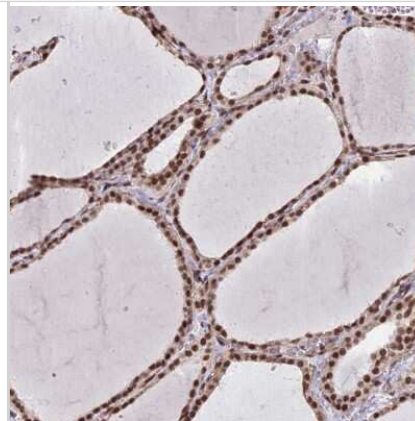
Immunohistochemistry-Paraffin: mpp8 Antibody [NBP1-92135] - Staining of human testis shows strong nuclear positivity in cells in seminiferous ducts and Leydig cells.



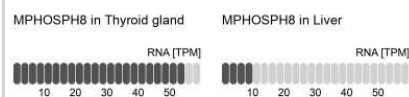
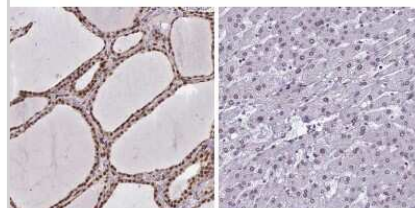
Immunohistochemistry-Paraffin: mpp8 Antibody [NBP1-92135] - Staining of human liver shows low expression as expected.



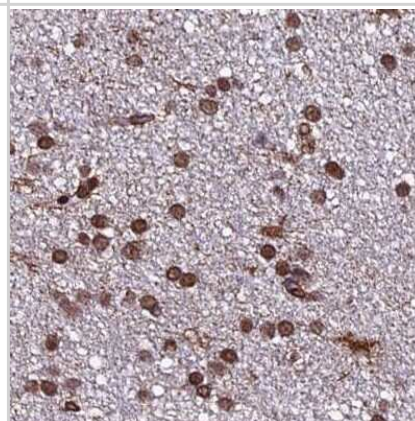
Immunohistochemistry-Paraffin: mpp8 Antibody [NBP1-92135] - Staining of human thyroid gland shows high expression.



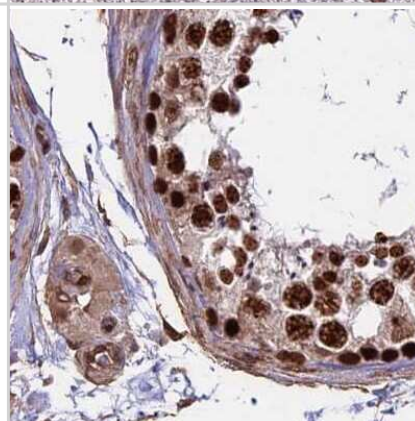
Immunohistochemistry-Paraffin: mpp8 Antibody [NBP1-92135] - Staining in human thyroid gland and liver tissues using anti-MPHOSPH8 antibody. Corresponding MPHOSPH8 RNA-seq data are presented for the same tissues.



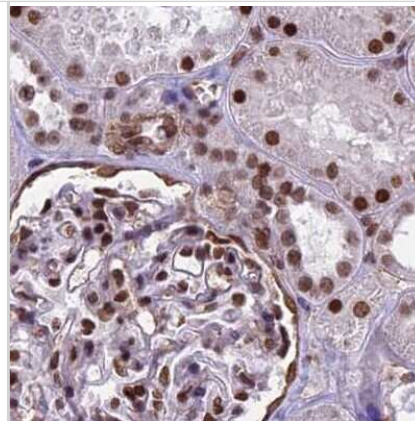
Immunohistochemistry-Paraffin: mpp8 Antibody [NBP1-92135] - Staining of human cerebral cortex.



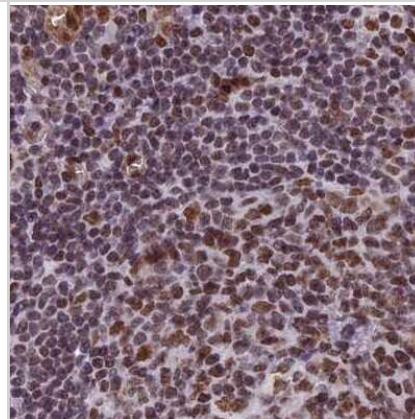
Immunohistochemistry-Paraffin: mpp8 Antibody [NBP1-92135] - Staining of human testis.



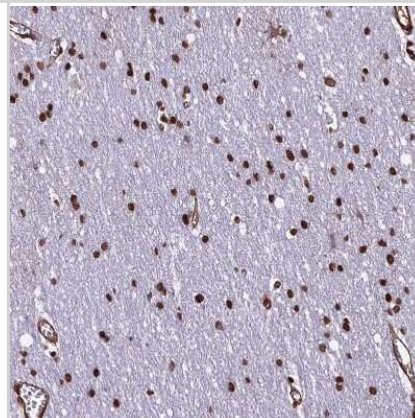
Immunohistochemistry-Paraffin: mpp8 Antibody [NBP1-92135] - Staining of human kidney.



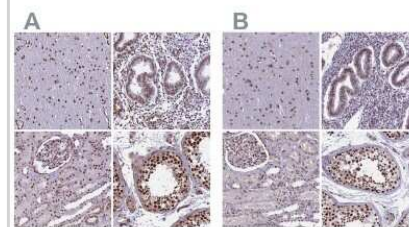
Immunohistochemistry-Paraffin: mpp8 Antibody [NBP1-92135] - Staining of human lymph node.



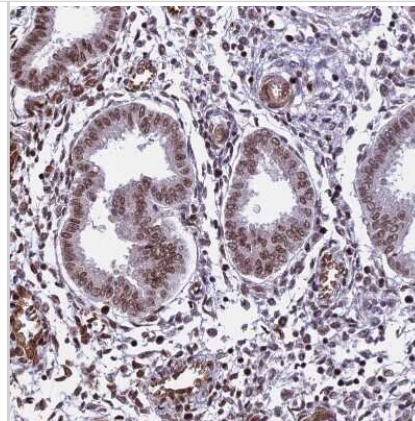
Immunohistochemistry-Paraffin: mpp8 Antibody [NBP1-92135] - Staining of human cerebral cortex shows strong nuclear positivity in glial cells.



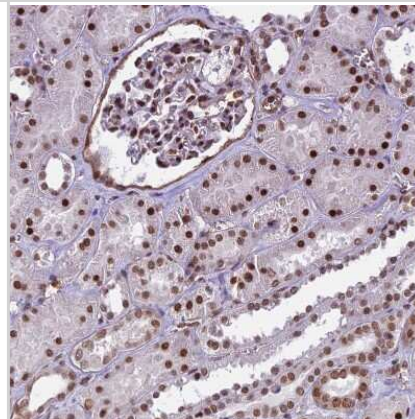
Immunohistochemistry-Paraffin: mpp8 Antibody [NBP1-92135] - Staining of human cerebral cortex, endometrium, kidney and testis using Anti-mpp8 antibody NBP1-92135 (A) shows similar protein distribution across tissues to independent antibody NBP1-92136 (B).



Immunohistochemistry-Paraffin: mpp8 Antibody [NBP1-92135] - Staining of human endometrium shows moderate nuclear positivity in glandular cells.



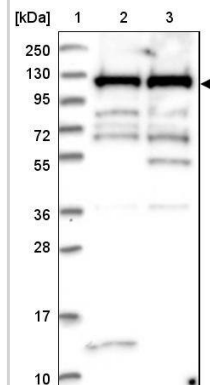
Immunohistochemistry-Paraffin: mpp8 Antibody [NBP1-92135] - Staining of human kidney shows moderate to strong nuclear positivity in cells in tubules.



Lane 1: Marker [kDa] 250, 130, 95, 72, 55, 36, 28, 17, 10

Lane 2: Human cell line RT-4

Lane 3: Human cell line U-251MG sp





Novus Biologicals USA

10730 E. Briarwood Avenue
Centennial, CO 80112
USA
Phone: 303.730.1950
Toll Free: 1.888.506.6887
Fax: 303.730.1966
nb-customerservice@bio-techne.com

Bio-Techne Canada

21 Canmotor Ave
Toronto, ON M8Z 4E6
Canada
Phone: 905.827.6400
Toll Free: 855.668.8722
Fax: 905.827.6402
canada.inquires@bio-techne.com

Bio-Techne Ltd

19 Barton Lane
Abingdon Science Park
Abingdon, OX14 3NB, United Kingdom
Phone: (44) (0) 1235 529449
Free Phone: 0800 37 34 15
Fax: (44) (0) 1235 533420
info.EMEA@bio-techne.com

General Contact Information

www.novusbio.com
Technical Support: nb-technical@bio-techne.com
Orders: nb-customerservice@bio-techne.com
General: novus@novusbio.com

Products Related to NBP1-92135

NBP1-92135PEP	mpp8 Recombinant Protein Antigen
NBP2-33376H	Blue Marker Antibody (6F4-F6) [HRP]
HAF008	Goat anti-Rabbit IgG Secondary Antibody [HRP]
NB7160	Goat anti-Rabbit IgG (H+L) Secondary Antibody [HRP]
NBP2-24891	Rabbit IgG Isotype Control

Limitations

This product is for research use only and is not approved for use in humans or in clinical diagnosis. Primary Antibodies are guaranteed for 1 year from date of receipt.

For more information on our 100% guarantee, please visit www.novusbio.com/guarantee

Earn gift cards/discounts by submitting a review: www.novusbio.com/reviews/submit/NBP1-92135

Earn gift cards/discounts by submitting a publication using this product:
www.novusbio.com/publications

