

Product Datasheet

GTF2IRD1 Antibody - BSA Free NBP1-91973

Unit Size: 0.1 ml

Store at 4C short term. Aliquot and store at -20C long term. Avoid freeze-thaw cycles.

www.novusbio.com



technical@novusbio.com

Publications: 5

Protocols, Publications, Related Products, Reviews, Research Tools and Images at:
www.novusbio.com/NBP1-91973

Updated 3/4/2026 v.20.1

Earn rewards for product
reviews and publications.

Submit a publication at www.novusbio.com/publications

Submit a review at www.novusbio.com/reviews/destination/NBP1-91973



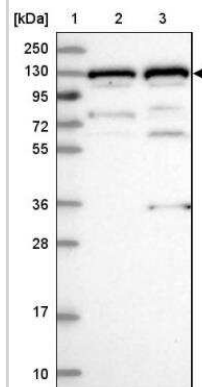
NBP1-91973

GTF2IRD1 Antibody - BSA Free

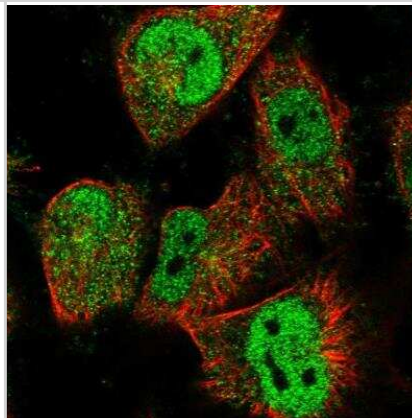
Product Information	
Unit Size	0.1 ml
Concentration	Concentrations vary lot to lot. See vial label for concentration. If unlisted please contact technical services.
Storage	Store at 4C short term. Aliquot and store at -20C long term. Avoid freeze-thaw cycles.
Clonality	Polyclonal
Preservative	0.02% Sodium Azide
Isotype	IgG
Purity	Affinity purified
Buffer	PBS (pH 7.2) and 40% Glycerol
Product Description	
Host	Rabbit
Gene ID	9569
Gene Symbol	GTF2IRD1
Species	Human, Mouse
Reactivity Notes	Mouse reactivity reported in scientific literature (PMID: 31418010). Rat (86%).
Immunogen	This antibody was developed against Recombinant Protein corresponding to amino acids: RPCTYGVPKLRILEERHSIHFIKRMFDERIFTGNKFTKDTTKLEPASPPEDTSA EVSRA TVLDLAGNARSDKGSMSEDCGPGTSGELGGLRPIKIEPEDLDIIQVTP DPSPTSEEMTDSMPGHLPSSEDSGYGMEMLTD
Product Application Details	
Applications	Western Blot, Immunohistochemistry-Paraffin, Immunocytochemistry/ Immunofluorescence, Immunohistochemistry, Chromatin Immunoprecipitation (ChIP), Knockout Validated
Recommended Dilutions	Western Blot 0.04-0.4 ug/ml, Immunohistochemistry 1:20 - 1:50, Immunocytochemistry/ Immunofluorescence 0.25-2 ug/ml, Immunohistochemistry-Paraffin 1:20 - 1:50, Chromatin Immunoprecipitation (ChIP) Validation (Kopp et al, PMID:32313931), Knockout Validated Validation (Kopp et al, PMID:32313931)
Application Notes	IHC-Paraffin, HIER pH 6 retrieval is recommended. ICC/IF, Fixation Permeabilization: Use PFA/Triton X-100.

Images

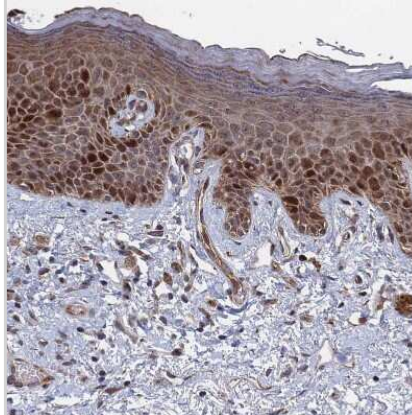
Western Blot: GTF2IRD1 Antibody [NBP1-91973] - Lane 1: Marker [kDa] 250, 130, 95, 72, 55, 36, 28, 17, 10 Lane 2: Human cell line RT-4 Lane 3: Human cell line U-251MG sp



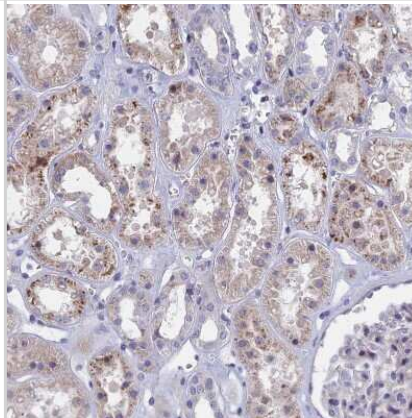
Immunocytochemistry/Immunofluorescence: GTF2IRD1 Antibody [NBP1-91973] - Staining of human cell line U-251 MG shows localization to nucleoplasm & cytosol.



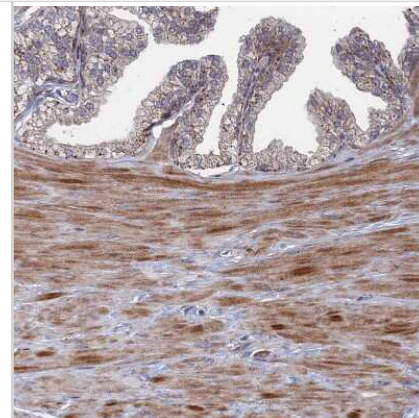
Immunohistochemistry-Paraffin: GTF2IRD1 Antibody [NBP1-91973] - Staining of human skin shows moderate to strong cytoplasmic and nuclear positivity in squamous epithelial cells.



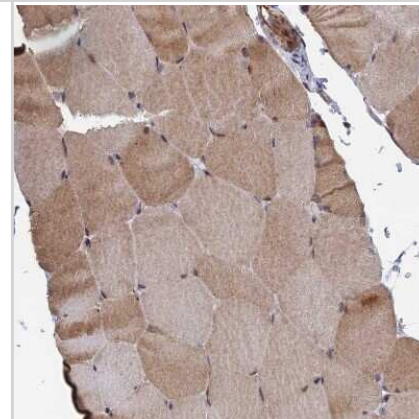
Immunohistochemistry-Paraffin: GTF2IRD1 Antibody [NBP1-91973] - Staining of human kidney shows weak cytoplasmic positivity in cells in tubules.



Immunohistochemistry-Paraffin: GTF2IRD1 Antibody [NBP1-91973] - Staining of human prostate shows moderate cytoplasmic positivity in smooth muscle cells.



Immunohistochemistry-Paraffin: GTF2IRD1 Antibody [NBP1-91973] - Staining of human skeletal muscle shows moderate cytoplasmic and nuclear positivity in myocytes.



Publications

Nygaard KR, Maloney SE, Swift RG et al. Extensive characterization of a Williams syndrome murine model shows Gtf2ird1-mediated rescue of select sensorimotor tasks, but no effect on enhanced social behavior Genes, Brain and Behavior 2023-08-01 [PMID: 37370259] (Human)

Kopp, N D, Nygaard, K R Et al. Functions of Gtf2i and Gtf2ird1 in the developing brain: transcription, DNA binding and long-term behavioral consequences. Hum Mol Genet 2020-06-03 [PMID: 32313931] (WB, Rat)

Marcelin G, Da Cunha C, Gamblin C et al. Autophagy inhibition blunts PDGFRA adipose progenitors' cell-autonomous fibrogenic response to high-fat diet Autophagy 2020-01-28 [PMID: 31992125] (WB, Mouse)

Kopp N, McCullough K, Maloney SE, Dougherty JD Gtf2i and Gtf2ird1 mutation do not account for the full phenotypic effect of the Williams syndrome critical region in mouse models Hum. Mol. Genet. 2019-08-16 [PMID: 31418010] (Mouse)

Hasegawa Y, Ikeda K, Chen Y et al. Repression of Adipose Tissue Fibrosis through a PRDM16-GTF2IRD1 Complex Improves Systemic Glucose Homeostasis Cell Metab. 2018-01-09 [PMID: 29320702] (Human)



Novus Biologicals USA

10730 E. Briarwood Avenue
Centennial, CO 80112
USA
Phone: 303.730.1950
Toll Free: 1.888.506.6887
Fax: 303.730.1966
nb-customerservice@bio-techne.com

Bio-Techne Canada

21 Canmotor Ave
Toronto, ON M8Z 4E6
Canada
Phone: 905.827.6400
Toll Free: 855.668.8722
Fax: 905.827.6402
canada.inquires@bio-techne.com

Bio-Techne Ltd

19 Barton Lane
Abingdon Science Park
Abingdon, OX14 3NB, United Kingdom
Phone: (44) (0) 1235 529449
Free Phone: 0800 37 34 15
Fax: (44) (0) 1235 533420
info.EMEA@bio-techne.com

General Contact Information

www.novusbio.com
Technical Support: nb-technical@bio-techne.com
Orders: nb-customerservice@bio-techne.com
General: novus@novusbio.com

Products Related to NBP1-91973

NBP1-91973PEP	GTF2IRD1 Recombinant Protein Antigen
HAF008	Goat anti-Rabbit IgG Secondary Antibody [HRP]
NB7160	Goat anti-Rabbit IgG (H+L) Secondary Antibody [HRP]
NBP2-24891	Rabbit IgG Isotype Control

Limitations

This product is for research use only and is not approved for use in humans or in clinical diagnosis. Primary Antibodies are guaranteed for 1 year from date of receipt.

For more information on our 100% guarantee, please visit www.novusbio.com/guarantee

Earn gift cards/discounts by submitting a review: www.novusbio.com/reviews/submit/NBP1-91973

Earn gift cards/discounts by submitting a publication using this product:
www.novusbio.com/publications

