

# Product Datasheet

## Protein O-Glucosyltransferase 1/POGLUT1/KTELC1 Antibody - BSA Free NBP1-90311

Unit Size: 0.1 ml

Store at 4C short term. Aliquot and store at -20C long term. Avoid freeze-thaw cycles.

[www.novusbio.com](http://www.novusbio.com)



[technical@novusbio.com](mailto:technical@novusbio.com)

### Publications: 3

Protocols, Publications, Related Products, Reviews, Research Tools and Images at:  
[www.novusbio.com/NBP1-90311](http://www.novusbio.com/NBP1-90311)

Updated 12/2/2025 v.20.1

Earn rewards for product  
reviews and publications.

Submit a publication at [www.novusbio.com/publications](http://www.novusbio.com/publications)

Submit a review at [www.novusbio.com/reviews/destination/NBP1-90311](http://www.novusbio.com/reviews/destination/NBP1-90311)

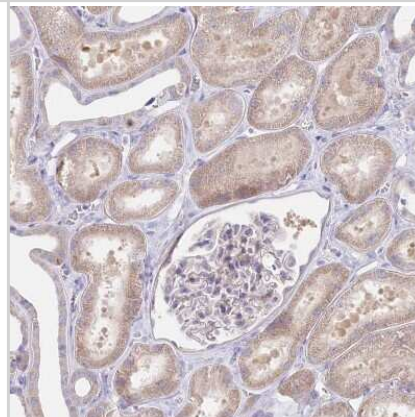


**NBP1-90311****Protein O-Glucosyltransferase 1/POGLUT1/KTELC1 Antibody - BSA Free**

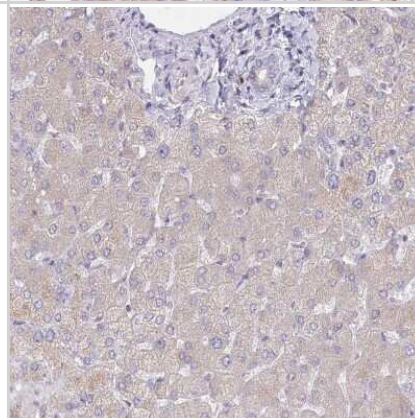
<b>Product Information</b>	
<b>Unit Size</b>	0.1 ml
<b>Concentration</b>	Concentrations vary lot to lot. See vial label for concentration. If unlisted please contact technical services.
<b>Storage</b>	Store at 4C short term. Aliquot and store at -20C long term. Avoid freeze-thaw cycles.
<b>Clonality</b>	Polyclonal
<b>Preservative</b>	0.02% Sodium Azide
<b>Isotype</b>	IgG
<b>Purity</b>	Affinity purified
<b>Buffer</b>	PBS (pH 7.2) and 40% Glycerol
<b>Product Description</b>	
<b>Description</b>	Novus Biologicals Rabbit Protein O-Glucosyltransferase 1/POGLUT1/KTELC1 Antibody - BSA Free (NBP1-90311) is a polyclonal antibody validated for use in IHC and WB. Anti-Protein O-Glucosyltransferase 1/POGLUT1/KTELC1 Antibody: Cited in 3 publications. All Novus Biologicals antibodies are covered by our 100% guarantee.
<b>Host</b>	Rabbit
<b>Gene ID</b>	56983
<b>Gene Symbol</b>	POGLUT1
<b>Species</b>	Human, Mouse
<b>Reactivity Notes</b>	Immunogen displays the following percentage of sequence identity for non-tested species: Rat (89%). Mouse reactivity reported in scientific literature (PMID: 29953591).
<b>Immunogen</b>	This antibody was developed against Recombinant Protein corresponding to amino acids: VQELLQFVKANDDVAQEIAERGSQFIRNHLQMDDITCYWENLLSEYSKFLSYNV TRRKGVDQIIPKMLKTEL
<b>Product Application Details</b>	
<b>Applications</b>	Western Blot, Immunohistochemistry-Paraffin, Immunohistochemistry
<b>Recommended Dilutions</b>	Western Blot 0.04-0.4 ug/ml, Immunohistochemistry 1:500 - 1:1000, Immunohistochemistry-Paraffin 1:500-1:1000
<b>Application Notes</b>	For IHC-Paraffin, HIER pH 6 retrieval is recommended.

**Images**

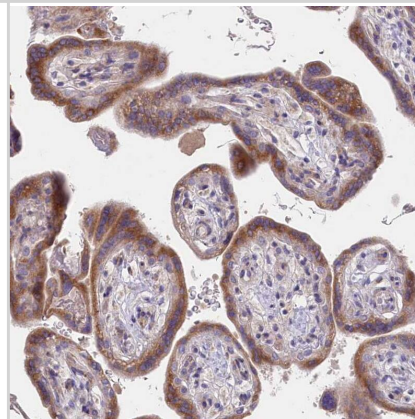
Immunohistochemistry-Paraffin: Protein O-Glucosyltransferase 1/POGLUT1/KTELC1 Antibody [NBP1-90311] - Staining of human kidney shows weak cytoplasmic positivity in cells in tubules.



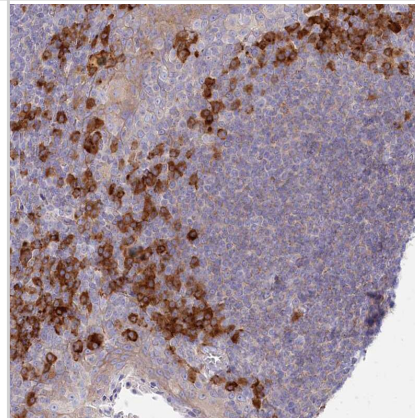
Immunohistochemistry-Paraffin: Protein O-Glucosyltransferase 1/POGLUT1/KTELC1 Antibody [NBP1-90311] - Staining of human liver shows no positivity in hepatocytes as expected.



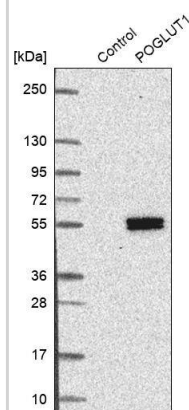
Staining of human placenta shows moderate cytoplasmic positivity in trophoblastic cells.



Staining of human tonsil shows strong cytoplasmic positivity in non-germinal center cells.



Analysis in control (vector only transfected HEK293T lysate) and POGLUT1 over-expression lysate (Co-expressed with a C-terminal myc-DDK tag (~3.1 kDa) in mammalian HEK293T cells).



## Publications

Servian-Morilla E, Cabrera-Serrano M, Johnson K et al. POGLUT1 biallelic mutations cause myopathy with reduced satellite cells, alpha-dystroglycan hypoglycosylation and a distinctive radiological pattern *Acta Neuropathol.* 2020-01-03 [PMID: 31897643] (Human)

Chammaa M, MaYsa A, Redondo C et al. RUMI is a novel negative prognostic marker and therapeutic target in non-small-cell lung cancer. *J. Cell. Physiol.* 2018-06-28 [PMID: 29953591] (IF/IHC, Mouse)

Basmanav FB, Oprisoreanu AM, Pasternack SM et al. Mutations in POGLUT1, encoding protein O-glucosyltransferase 1, cause autosomal-dominant Dowling-Degos disease. *Am. J. Hum. Genet.* 2014-01-02 [PMID: 24387993] (WB, IHC-P, Human)



### **Novus Biologicals USA**

10730 E. Briarwood Avenue  
Centennial, CO 80112  
USA  
Phone: 303.730.1950  
Toll Free: 1.888.506.6887  
Fax: 303.730.1966  
nb-customerservice@bio-techne.com

### **Bio-Techne Canada**

21 Canmotor Ave  
Toronto, ON M8Z 4E6  
Canada  
Phone: 905.827.6400  
Toll Free: 855.668.8722  
Fax: 905.827.6402  
canada.inquires@bio-techne.com

### **Bio-Techne Ltd**

19 Barton Lane  
Abingdon Science Park  
Abingdon, OX14 3NB, United Kingdom  
Phone: (44) (0) 1235 529449  
Free Phone: 0800 37 34 15  
Fax: (44) (0) 1235 533420  
info.EMEA@bio-techne.com

### **General Contact Information**

www.novusbio.com  
Technical Support: nb-technical@bio-techne.com  
Orders: nb-customerservice@bio-techne.com  
General: novus@novusbio.com

### **Products Related to NBP1-90311**

---

NBP1-90311PEP	Protein O-Glucosyltransferase 1/POGLUT1/KTELC1 Recombinant Protein Antigen
NBP2-33376H	Blue Marker Antibody (6F4-F6) [HRP]
HAF008	Goat anti-Rabbit IgG Secondary Antibody [HRP]
NB7160	Goat anti-Rabbit IgG (H+L) Secondary Antibody [HRP]
NBP2-24891	Rabbit IgG Isotype Control

---

### **Limitations**

This product is for research use only and is not approved for use in humans or in clinical diagnosis. Primary Antibodies are guaranteed for 1 year from date of receipt.

For more information on our 100% guarantee, please visit [www.novusbio.com/guarantee](http://www.novusbio.com/guarantee)

Earn gift cards/discounts by submitting a review: [www.novusbio.com/reviews/submit/NBP1-90311](http://www.novusbio.com/reviews/submit/NBP1-90311)

Earn gift cards/discounts by submitting a publication using this product:  
[www.novusbio.com/publications](http://www.novusbio.com/publications)



