

Product Datasheet

PSMA/FOLH1/NAALADase I Antibody - BSA Free NBP1-89822

Unit Size: 0.1 ml

Store at 4C short term. Aliquot and store at -20C long term. Avoid freeze-thaw cycles.

www.novusbio.com



technical@novusbio.com

Publications: 3

Protocols, Publications, Related Products, Reviews, Research Tools and Images at:
www.novusbio.com/NBP1-89822

Updated 12/2/2025 v.20.1

Earn rewards for product
reviews and publications.

Submit a publication at www.novusbio.com/publications

Submit a review at www.novusbio.com/reviews/destination/NBP1-89822

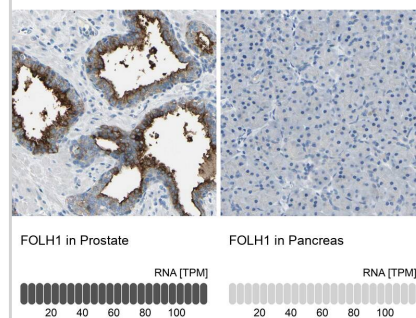


NBP1-89822**PSMA/FOLH1/NAALADase I Antibody - BSA Free**

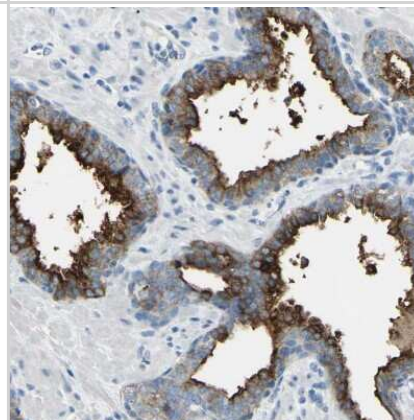
| Product Information | |
|------------------------------------|--|
| Unit Size | 0.1 ml |
| Concentration | Concentrations vary lot to lot. See vial label for concentration. If unlisted please contact technical services. |
| Storage | Store at 4C short term. Aliquot and store at -20C long term. Avoid freeze-thaw cycles. |
| Clonality | Polyclonal |
| Preservative | 0.02% Sodium Azide |
| Isotype | IgG |
| Purity | Affinity purified |
| Buffer | PBS (pH 7.2) and 40% Glycerol |
| Product Description | |
| Description | Novus Biologicals Rabbit PSMA/FOLH1/NAALADase I Antibody - BSA Free (NBP1-89822) is a polyclonal antibody validated for use in IHC. Anti-PSMA/FOLH1/NAALADase I Antibody: Cited in 3 publications. All Novus Biologicals antibodies are covered by our 100% guarantee. |
| Host | Rabbit |
| Gene ID | 2346 |
| Gene Symbol | FOLH1 |
| Species | Human, Rat |
| Reactivity Notes | Immunogen displays the following percentage of sequence identity for non-tested species: Mouse (86%) Use in Rat reported in scientific publication (PMID: 32451793). |
| Immunogen | This antibody was developed against Recombinant Protein corresponding to amino acids: ADYFAPGVKSYPDGWNLPGGVQQRGNILNLNGAGDPLTPGYPANEYAYRRGI AEAVGLPSIPVHPIGYYYDAQKLEKMGGSAPPDSSWRGSLKVPYNVGPGFTGN F |
| Product Application Details | |
| Applications | Immunohistochemistry-Paraffin, Immunohistochemistry |
| Recommended Dilutions | Immunohistochemistry 1:200 - 1:500, Immunohistochemistry-Paraffin 1:200 - 1:500 |
| Application Notes | Retrieval method: HIER pH6 |

Images

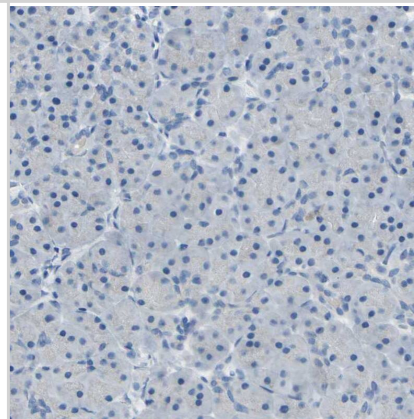
Analysis in human prostate and pancreas tissues using NBP1-89822 antibody. Corresponding FOLH1 RNA-seq data are presented for the same tissues.



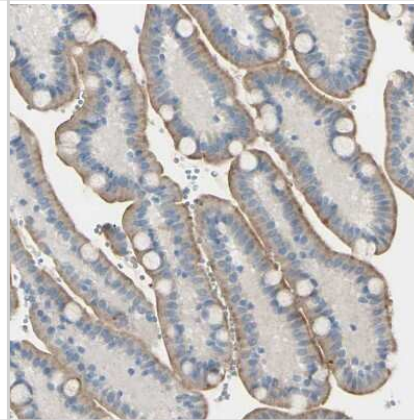
Immunohistochemistry-Paraffin: PSMA/FOLH1/NAALADase I Antibody [NBP1-89822] - Staining of human prostate shows strong positivity in apical membrane in glandular cells.



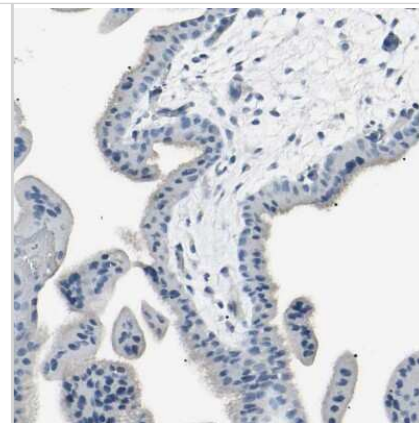
Staining of human pancreas shows no positivity in exocrine glandular cells as expected.



Immunohistochemistry-Paraffin: PSMA/FOLH1/NAALADase I Antibody [NBP1-89822] - Staining of human duodenum shows moderate positivity in apical membrane in glandular cells.



Immunohistochemistry-Paraffin: PSMA/FOLH1/NAALADase I Antibody [NBP1-89822] - Staining of human placenta shows no positivity in trophoblastic cells as expected.



Publications

Oliveira D, Stegmayr C, Heinzl A et al. High uptake of ^{68}Ga -PSMA and ^{18}F -DCFPyL in the peritumoral area of rat gliomas due to activated astrocytes *EJNMMI Res* 2020-05-25 [PMID: 32451793] (IF/IHC, Rat)

Hudson EP, Uhlen M, Rockberg J. Multiplex epitope mapping using bacterial surface display reveals both linear and conformational epitopes. *Sci Rep* 2012-01-01 [PMID: 23050090]

Jaraj SJ, Augsten M, Haggarth L et al. GAD1 is a biomarker for benign and malignant prostatic tissue. *Scand J Urol Nephrol* 2011-02-01 [PMID: 21091088]



Novus Biologicals USA

10730 E. Briarwood Avenue
Centennial, CO 80112
USA
Phone: 303.730.1950
Toll Free: 1.888.506.6887
Fax: 303.730.1966
nb-customerservice@bio-techne.com

Bio-Techne Canada

21 Canmotor Ave
Toronto, ON M8Z 4E6
Canada
Phone: 905.827.6400
Toll Free: 855.668.8722
Fax: 905.827.6402
canada.inquires@bio-techne.com

Bio-Techne Ltd

19 Barton Lane
Abingdon Science Park
Abingdon, OX14 3NB, United Kingdom
Phone: (44) (0) 1235 529449
Free Phone: 0800 37 34 15
Fax: (44) (0) 1235 533420
info.EMEA@bio-techne.com

General Contact Information

www.novusbio.com
Technical Support: nb-technical@bio-techne.com
Orders: nb-customerservice@bio-techne.com
General: novus@novusbio.com

Products Related to NBP1-89822

| | |
|---------------|---|
| NBP1-89822PEP | PSMA/FOLH1/NAALADase I Recombinant Protein Antigen |
| HAF008 | Goat anti-Rabbit IgG Secondary Antibody [HRP] |
| NB7160 | Goat anti-Rabbit IgG (H+L) Secondary Antibody [HRP] |
| NBP2-24891 | Rabbit IgG Isotype Control |

Limitations

This product is for research use only and is not approved for use in humans or in clinical diagnosis. Primary Antibodies are guaranteed for 1 year from date of receipt.

For more information on our 100% guarantee, please visit www.novusbio.com/guarantee

Earn gift cards/discounts by submitting a review: www.novusbio.com/reviews/submit/NBP1-89822

Earn gift cards/discounts by submitting a publication using this product:
www.novusbio.com/publications

