

Product Datasheet

Glucose 6 Phosphate Dehydrogenase Antibody - BSA Free NBP1-89805

Unit Size: 0.1 ml

Store at 4C short term. Aliquot and store at -20C long term. Avoid freeze-thaw cycles.

www.novusbio.com



technical@novusbio.com

Publications: 4

Protocols, Publications, Related Products, Reviews, Research Tools and Images at:
www.novusbio.com/NBP1-89805

Updated 12/2/2025 v.20.1

Earn rewards for product
reviews and publications.

Submit a publication at www.novusbio.com/publications

Submit a review at www.novusbio.com/reviews/destination/NBP1-89805



NBP1-89805**Glucose 6 Phosphate Dehydrogenase Antibody - BSA Free**

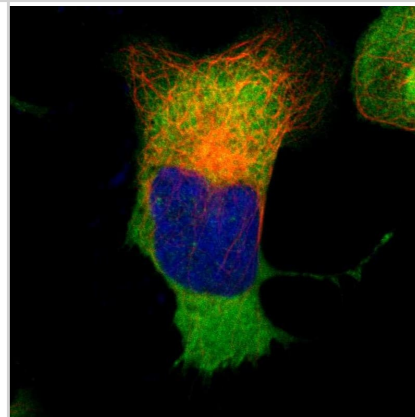
| Product Information | |
|----------------------------|--|
| Unit Size | 0.1 ml |
| Concentration | Concentrations vary lot to lot. See vial label for concentration. If unlisted please contact technical services. |
| Storage | Store at 4C short term. Aliquot and store at -20C long term. Avoid freeze-thaw cycles. |
| Clonality | Polyclonal |
| Preservative | 0.02% Sodium Azide |
| Isotype | IgG |
| Purity | Affinity purified |
| Buffer | PBS (pH 7.2) and 40% Glycerol |

| Product Description | |
|----------------------------|---|
| Description | Novus Biologicals Rabbit Glucose 6 Phosphate Dehydrogenase Antibody - BSA Free (NBP1-89805) is a polyclonal antibody validated for use in IHC, WB and ICC/IF. Anti-Glucose 6 Phosphate Dehydrogenase Antibody: Cited in 2 publications. All Novus Biologicals antibodies are covered by our 100% guarantee. |
| Host | Rabbit |
| Gene ID | 2539 |
| Gene Symbol | G6PD |
| Species | Human |
| Marker | Cytosol Marker |
| Immunogen | This antibody was developed against Recombinant Protein corresponding to amino acids: EVR LQFH DVAGDIFHQQCKRNELVIRVQPNEAVYTKMMTKKPGMFFNPEESEL DLTYGNRYKNVKLPDAYERLILDVFCGSQMHFVRSDELREAWRIFTPLLHQIEL EKP |

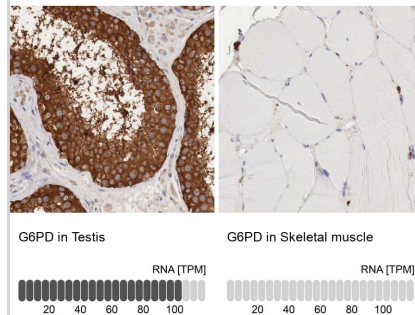
| Product Application Details | |
|------------------------------------|--|
| Applications | Western Blot, Immunohistochemistry-Paraffin, Immunocytochemistry/ Immunofluorescence, Immunohistochemistry |
| Recommended Dilutions | Western Blot 0.04-0.4 ug/ml, Immunohistochemistry 1:500 - 1:1000, Immunocytochemistry/ Immunofluorescence 0.25-2 ug/ml, Immunohistochemistry-Paraffin 1:500 - 1:1000 |
| Application Notes | For IHC-Paraffin, HIER pH 6 retrieval is recommended. ICC/IF, Fixation Permeabilization: Use PFA/Triton X-100. |

Images

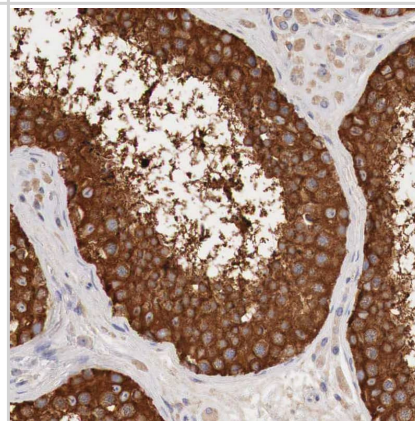
Staining of human cell line U-2 OS shows localization to cytosol.



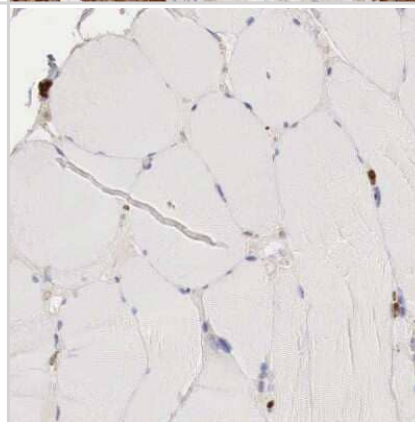
Analysis in human testis and skeletal muscle tissues using NBP1-89805 antibody. Corresponding G6PD RNA-seq data are presented for the same tissues.



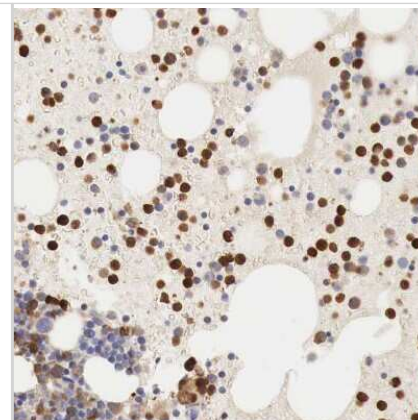
Staining of human testis shows strong cytoplasmic positivity in cells in seminiferous ducts.



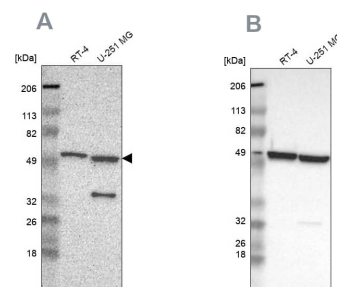
Immunohistochemistry-Paraffin: Glucose 6 Phosphate Dehydrogenase Antibody [NBP1-89805] - Staining of human skeletal muscle shows no positivity in myocytes.



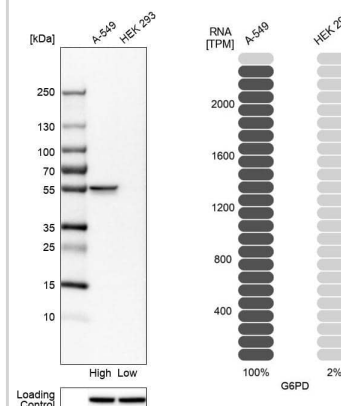
Immunohistochemistry-Paraffin: Glucose 6 Phosphate Dehydrogenase Antibody [NBP1-89805] - Staining of human bone marrow shows strong cytoplasmic positivity in hematopoietic cells.



Analysis using Anti-G6PD antibody NBP1-89805 (A) shows similar pattern to independent antibody NBP1-89804 (B).



Analysis in human cell lines A-549 and HEK293 using Anti-G6PD antibody. Corresponding G6PD RNA-seq data are presented for the same cell lines. Loading control: Anti-HSP90B1.



Publications

Rimmer L, Geisbrecht E, Chao M et al. Investigating the metabolic changes that accompany skeletal muscle maturation *Physiology* 2023-05-01

Rimmer L Investigating the metabolic changes that accompany skeletal muscle hypertrophy Thesis 2023-01-01 (Western Blot)

Stadler C, Rexhepaj E, Singan VR et al. Immunofluorescence and fluorescent-protein tagging show high correlation for protein localization in mammalian cells. *Nat Methods* 2013-04-01 [PMID: 23435261]

Dammeyer P, Arner ES., et al. Human Protein Atlas of redox systems - What can be learnt? *Biochim Biophys Acta* 2010-07-18 [PMID: 20647035]



Novus Biologicals USA

10730 E. Briarwood Avenue
Centennial, CO 80112
USA
Phone: 303.730.1950
Toll Free: 1.888.506.6887
Fax: 303.730.1966
nb-customerservice@bio-techne.com

Bio-Techne Canada

21 Canmotor Ave
Toronto, ON M8Z 4E6
Canada
Phone: 905.827.6400
Toll Free: 855.668.8722
Fax: 905.827.6402
canada.inquires@bio-techne.com

Bio-Techne Ltd

19 Barton Lane
Abingdon Science Park
Abingdon, OX14 3NB, United Kingdom
Phone: (44) (0) 1235 529449
Free Phone: 0800 37 34 15
Fax: (44) (0) 1235 533420
info.EMEA@bio-techne.com

General Contact Information

www.novusbio.com
Technical Support: nb-technical@bio-techne.com
Orders: nb-customerservice@bio-techne.com
General: novus@novusbio.com

Products Related to NBP1-89805

| | |
|---------------|---|
| NBP1-89805PEP | Glucose 6 Phosphate Dehydrogenase Recombinant Protein Antigen |
| NBP2-33376H | Blue Marker Antibody (6F4-F6) [HRP] |
| HAF008 | Goat anti-Rabbit IgG Secondary Antibody [HRP] |
| NB7160 | Goat anti-Rabbit IgG (H+L) Secondary Antibody [HRP] |
| NBP2-24891 | Rabbit IgG Isotype Control |

Limitations

This product is for research use only and is not approved for use in humans or in clinical diagnosis. Primary Antibodies are guaranteed for 1 year from date of receipt.

For more information on our 100% guarantee, please visit www.novusbio.com/guarantee

Earn gift cards/discounts by submitting a review: www.novusbio.com/reviews/submit/NBP1-89805

Earn gift cards/discounts by submitting a publication using this product:
www.novusbio.com/publications

