

Product Datasheet

WDHD1 Antibody - BSA Free NBP1-89091

Unit Size: 0.1 ml

Store at 4C short term. Aliquot and store at -20C long term. Avoid freeze-thaw cycles.

www.novusbio.com



technical@novusbio.com

Reviews: 1 Publications: 7

Protocols, Publications, Related Products, Reviews, Research Tools and Images at:
www.novusbio.com/NBP1-89091

Updated 12/2/2025 v.20.1

**Earn rewards for product
reviews and publications.**

Submit a publication at www.novusbio.com/publications

Submit a review at www.novusbio.com/reviews/destination/NBP1-89091



NBP1-89091

WDHD1 Antibody - BSA Free

Product Information	
Unit Size	0.1 ml
Concentration	Concentrations vary lot to lot. See vial label for concentration. If unlisted please contact technical services.
Storage	Store at 4C short term. Aliquot and store at -20C long term. Avoid freeze-thaw cycles.
Clonality	Polyclonal
Preservative	0.02% Sodium Azide
Isotype	IgG
Purity	Affinity purified
Buffer	PBS (pH 7.2) and 40% Glycerol
Target Molecular Weight	126 kDa

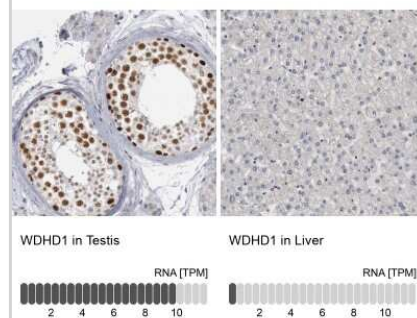
Product Description	
Description	Novus Biologicals Rabbit WDHD1 Antibody - BSA Free (NBP1-89091) is a polyclonal antibody validated for use in IHC, WB and ICC/IF. Anti-WDHD1 Antibody: Cited in 6 publications. All Novus Biologicals antibodies are covered by our 100% guarantee.
Host	Rabbit
Gene ID	11169
Gene Symbol	WDHD1
Species	Human, Mouse, Rat
Immunogen	This antibody was developed against Recombinant Protein corresponding to amino acids: QTLNIVTWSPCGQYLAAGSINGLIIVWNVETKDCMERVKHEKGYAICGLAWHPT CGRISYTD AEGNLGLLENVCDPSGKTSSSKVSSRVEKDYNLDFDGDMSNAG DFLNDNAVE

Product Application Details	
Applications	Western Blot, Immunohistochemistry-Paraffin, Immunocytochemistry/ Immunofluorescence, Immunohistochemistry
Recommended Dilutions	Western Blot 0.04-0.4 µg/ml, Immunohistochemistry 1:50 - 1:200, Immunocytochemistry/ Immunofluorescence 0.25-2 µg/ml, Immunohistochemistry-Paraffin 1:50-1:200
Application Notes	For IHC-Paraffin, HIER pH 6 retrieval is recommended. ICC/IF Fixation Permeabilization, Use PFA/Triton X-100.

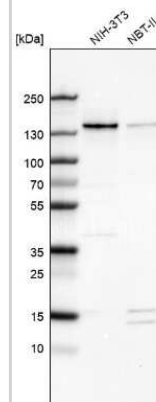


Images

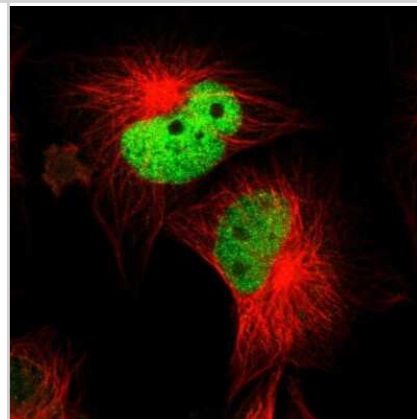
Immunohistochemistry-Paraffin: WDHD1 Antibody [NBP1-89091] - Staining in human testis and liver tissues.. Corresponding WDHD1 RNA-seq data are presented for the same tissues.



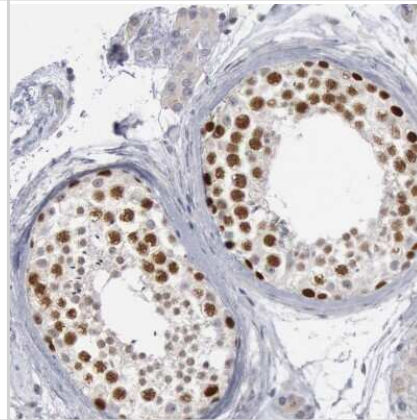
Western Blot: WDHD1 Antibody [NBP1-89091] - Analysis in mouse cell line NIH-3T3 and rat cell line NBT-II.



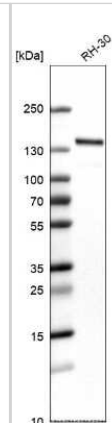
Immunocytochemistry/Immunofluorescence: WDHD1 Antibody [NBP1-89091] - Staining of human cell line U-251 MG shows localization to nucleoplasm. Antibody staining is shown in green.



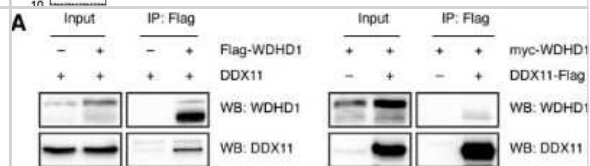
Immunohistochemistry-Paraffin: WDHD1 Antibody [NBP1-89091] - Staining of human testis shows nuclear positivity in cells in seminiferous ducts.



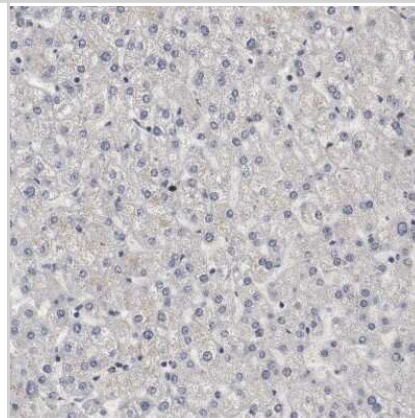
Western Blot: WDHD1 Antibody [NBP1-89091] - Analysis in human cell line RH-30.



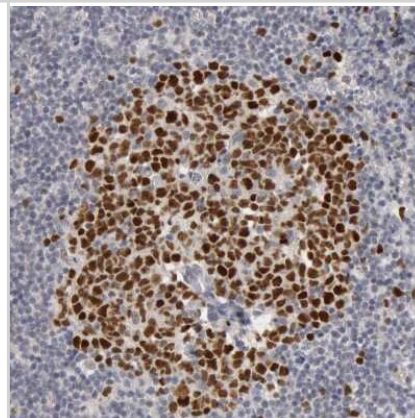
Western Blot: WDHD1 Antibody [NBP1-89091] - The interaction of DDX11 with WDHD1 does not depend on FeS cluster binding. Reciprocal co-immunoprecipitations of Flag-tagged WDHD1 and untagged DDX11, and Flag-tagged DDX11 and myc-tagged WDHD1, respectively, extracted from 293T cells. Image collected and cropped by CiteAb from the following publication (<https://www.life-science-alliance.org/lookup/doi/10.26508/lsa.201900547>), licensed under a CC-BY license.



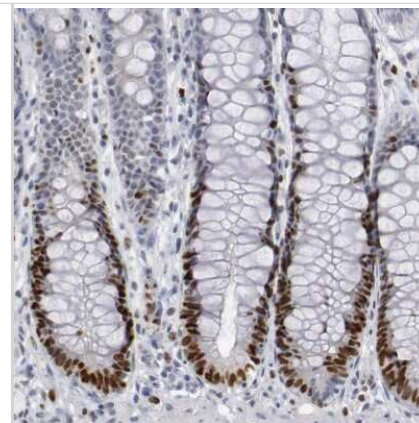
Immunohistochemistry-Paraffin: WDHD1 Antibody [NBP1-89091] - Staining of human liver shows no positivity in hepatocytes.



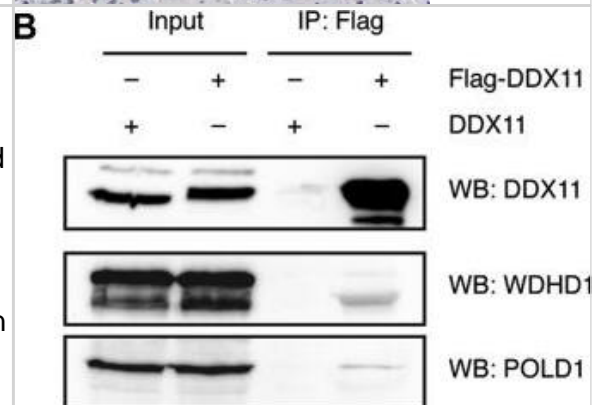
Immunohistochemistry-Paraffin: WDHD1 Antibody [NBP1-89091] - Staining of human lymph node shows strong nuclear positivity in germinal center cells.



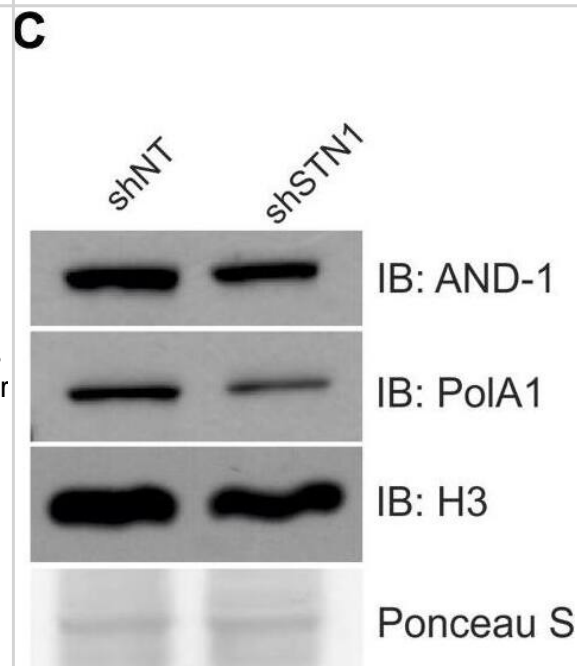
Immunohistochemistry-Paraffin: WDHD1 Antibody [NBP1-89091] - Staining of human rectum shows strong nuclear positivity in glandular cells.



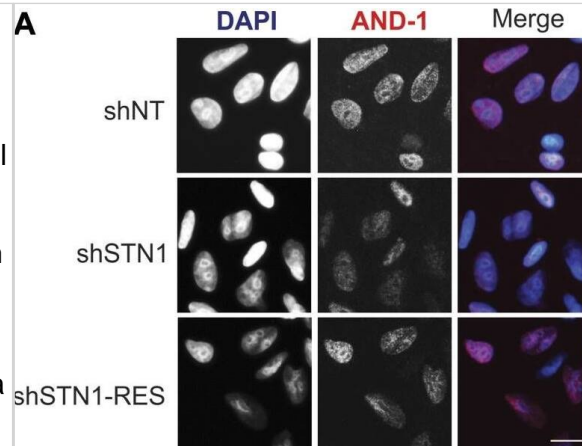
Western Blot: WDHD1 Antibody [NBP1-89091] - DDX11 interacts with Pol δ independently of its FeS cluster. (A) Gene Ontology term enrichment analysis of interaction partners obtained upon pull-down of YFP-DDX11 from HeLa Flp-In T-REx cells. (B) Flag pull-down of over-expressed Flag-tagged DDX11 from 293T cells & co-immunoprecipitated endogenous proteins. (C) Reciprocal co-immunoprecipitations of Flag-tagged POLD1 & untagged DDX11, & Flag-tagged DDX11 & untagged POLD1, respectively, extracted from 293T cells. (D) Co-immunoprecipitations of Flag-tagged DDX11 variants & untagged POLD1 from 293T cells. See also Fig S3, Tables S1, & S2. WB, Western blot. Image collected & cropped by CiteAb from the following publication (<https://pubmed.ncbi.nlm.nih.gov/32071282>), licensed under a CC-BY license. Not internally tested by Novus Biologicals.



Western Blot: WDHD1 Antibody [NBP1-89091] - CST is required for AND-1 & pol α chromatin association. (A) Representative images of pre-extracted HeLa cells used to measure chromatin-associated AND-1. DAPI: blue, AND-1: red. Scale bar = 12.5 μ m. (B) Dot plots of mean AND-1 intensity per nuclei in AFU for each cell line, as indicated. Black line & numbers below the graph indicate the mean AFU. Error bars indicate the \pm SEM of three independent biological experiments. (C) Western blot analysis showing chromatin fractions from HCT116 cells. Ponceau S & histone H3 were used as loading controls. AND-1 & pol α levels were normalized to H3 levels & then normalized to the shNT control. (D) Co-IP was performed with Flag or HA antibody in cell lysates from HEK 293T cells, as indicated. 5% input was loaded as a control. For +HU samples in (B) & (D), HU was added 2 h before collection. Data are representative of three independent biological experiments. n indicates the number of total nuclei scored. P-values were calculated by an unpaired, two-tailed Mann-Whitney test in (B) & t test in (C) (****P \leq 0.0001, **P \leq 0.01). Image collected & cropped by CiteAb from the following publication (<https://pubmed.ncbi.nlm.nih.gov/30979824>), licensed under a CC-BY license. Not internally tested by Novus Biologicals.



Immunocytochemistry/ Immunofluorescence: WDHD1 Antibody [NBP1-89091] - CST is required for AND-1 & pol α chromatin association. (A) Representative images of pre-extracted HeLa cells used to measure chromatin-associated AND-1. DAPI: blue, AND-1: red. Scale bar = 12.5 μm . (B) Dot plots of mean AND-1 intensity per nuclei in AFU for each cell line, as indicated. Black line & numbers below the graph indicate the mean AFU. Error bars indicate the \pm SEM of three independent biological experiments. (C) Western blot analysis showing chromatin fractions from HCT116 cells. Ponceau S & histone H3 were used as loading controls. AND-1 & pol α levels were normalized to H3 levels & then normalized to the shNT control. (D) Co-IP was performed with Flag or HA antibody in cell lysates from HEK 293T cells, as indicated. 5% input was loaded as a control. For +HU samples in (B) & (D), HU was added 2 h before collection. Data are representative of three independent biological experiments. n indicates the number of total nuclei scored. P-values were calculated by an unpaired, two-tailed Mann-Whitney test in (B) & t test in (C) (****P \leq 0.0001, **P \leq 0.01). Image collected & cropped by CiteAb from the following publication (<https://pubmed.ncbi.nlm.nih.gov/30979824>), licensed under a CC-BY license. Not internally tested by Novus Biologicals.



Western Blot: WDHD1 Antibody [NBP1-89091] - CST is required for AND-1 & pol α chromatin association. (A) Representative images of pre-extracted HeLa cells used to measure chromatin-associated AND-1. DAPI: blue, AND-1: red. Scale bar = 12.5 μm . (B) Dot plots of mean AND-1 intensity per nuclei in AFU for each cell line, as indicated. Black line & numbers below the graph indicate the mean AFU. Error bars indicate the \pm SEM of three independent biological experiments. (C) Western blot analysis showing chromatin fractions from HCT116 cells. Ponceau S & histone H3 were used as loading controls. AND-1 & pol α levels were normalized to H3 levels & then normalized to the shNT control. (D) Co-IP was performed with Flag or HA antibody in cell lysates from HEK 293T cells, as indicated. 5% input was loaded as a control. For +HU samples in (B) & (D), HU was added 2 h before collection. Data are representative of three independent biological experiments. n indicates the number of total nuclei scored. P-values were calculated by an unpaired, two-tailed Mann-Whitney test in (B) & t test in (C) (****P \leq 0.0001, **P \leq 0.01). Image collected & cropped by CiteAb from the following publication (<https://pubmed.ncbi.nlm.nih.gov/30979824>), licensed under a CC-BY license. Not internally tested by Novus Biologicals.



Publications

Zhou S, Zhang Y, Li Z et al. And-1 coordinates with polymerase δ to regulate nucleotide excision repair and UVB-induced skin tumorigenesis *Nature Communications* 2025-10-21 [PMID: 41120356]

Scaramuzza, S;Jones, RM;Sadurni, MM;Reynolds-Winczura, A;Poovathumkadavil, D;Farrell, A;Natsume, T;Rojas, P;Cuesta, CF;Kanemaki, MT;Saponaro, M;Gambus, A; TRAIP resolves DNA replication-transcription conflicts during the S-phase of unperturbed cells *Nature communications* 2023-08-21 [PMID: 37604812]

Ana G, Bernardo O, Marco N et al. Micronuclei from misaligned chromosomes that satisfy the spindle assembly checkpoint in cancer cells. *Curr Biol.* 2022-08-27 [PMID: 36057259]

Wang Y, Brady K S et al. Human CST suppresses origin licensing and promotes AND-1/Ctf4 chromatin association. *Life Sci Alliance* 2019-01-04 [PMID: 30979824] (ICC/IF, WB, Human)

Simon AK, Kummer S, Wild S et al. The iron-sulfur helicase DDX11 promotes the generation of single-stranded DNA for CHK1 activation *Life Sci Alliance* 2020-03-01 [PMID: 32071282] (WB, Human)

Chen Y, Liu H, Zhang H et al. And-1 coordinates with CtIP for efficient homologous recombination and DNA damage checkpoint maintenance. *Nucleic Acids Res.* 2016-12-09 [PMID: 27940552] (ICC/IF, WB, Human)

Sato N, Koinuma J, Fujita M et al. Activation of WD repeat and high-mobility group box DNA binding protein 1 in pulmonary and esophageal carcinogenesis. *Clin Cancer Res* 2010-01-01 [PMID: 20028748]





Novus Biologicals USA

10730 E. Briarwood Avenue
Centennial, CO 80112
USA
Phone: 303.730.1950
Toll Free: 1.888.506.6887
Fax: 303.730.1966
nb-customerservice@bio-techne.com

Bio-Techne Canada

21 Canmotor Ave
Toronto, ON M8Z 4E6
Canada
Phone: 905.827.6400
Toll Free: 855.668.8722
Fax: 905.827.6402
canada.inquires@bio-techne.com

Bio-Techne Ltd

19 Barton Lane
Abingdon Science Park
Abingdon, OX14 3NB, United Kingdom
Phone: (44) (0) 1235 529449
Free Phone: 0800 37 34 15
Fax: (44) (0) 1235 533420
info.EMEA@bio-techne.com

General Contact Information

www.novusbio.com
Technical Support: nb-technical@bio-techne.com
Orders: nb-customerservice@bio-techne.com
General: novus@novusbio.com

Products Related to NBP1-89091

NBP1-89091PEP	WDHD1 Recombinant Protein Antigen
NBP2-33376H	Blue Marker Antibody (6F4-F6) [HRP]
HAF008	Goat anti-Rabbit IgG Secondary Antibody [HRP]
NB7160	Goat anti-Rabbit IgG (H+L) Secondary Antibody [HRP]
NBP2-24891	Rabbit IgG Isotype Control

Limitations

This product is for research use only and is not approved for use in humans or in clinical diagnosis. Primary Antibodies are guaranteed for 1 year from date of receipt.

For more information on our 100% guarantee, please visit www.novusbio.com/guarantee

Earn gift cards/discounts by submitting a review: www.novusbio.com/reviews/submit/NBP1-89091

Earn gift cards/discounts by submitting a publication using this product:
www.novusbio.com/publications

