

Product Datasheet

SMC3 Antibody - BSA Free

NBP1-88715

Unit Size: 0.1 ml

Store at 4C short term. Aliquot and store at -20C long term. Avoid freeze-thaw cycles.

www.novusbio.com



technical@novusbio.com

Protocols, Publications, Related Products, Reviews, Research Tools and Images at:
www.novusbio.com/NBP1-88715

Updated 12/2/2025 v.20.1

Earn rewards for product
reviews and publications.

Submit a publication at www.novusbio.com/publications

Submit a review at www.novusbio.com/reviews/destination/NBP1-88715



NBP1-88715

SMC3 Antibody - BSA Free

Product Information	
Unit Size	0.1 ml
Concentration	Concentrations vary lot to lot. See vial label for concentration. If unlisted please contact technical services.
Storage	Store at 4C short term. Aliquot and store at -20C long term. Avoid freeze-thaw cycles.
Clonality	Polyclonal
Preservative	0.02% Sodium Azide
Isotype	IgG
Purity	Affinity purified
Buffer	PBS (pH 7.2) and 40% Glycerol

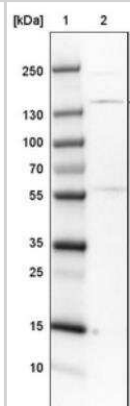
Product Description	
Description	Novus Biologicals Rabbit SMC3 Antibody - BSA Free (NBP1-88715) is a polyclonal antibody validated for use in IHC, WB and Simple Western. All Novus Biologicals antibodies are covered by our 100% guarantee.
Host	Rabbit
Gene ID	9126
Gene Symbol	SMC3
Species	Human
Immunogen	This antibody was developed against Recombinant Protein corresponding to amino acids: EFNKMNLPGEVTFPLPNKLDVRDTAYPETNDAIPMISKLRYNPRFDKAFKHVFG KTLICRSMEVSTQLARAFTMDCITLEGDQVSHRG

Product Application Details	
Applications	Western Blot, Simple Western, Immunohistochemistry-Paraffin, Immunohistochemistry, Chromatin Immunoprecipitation (ChIP)
Recommended Dilutions	Western Blot 0.04-0.4 ug/ml, Simple Western 1:25, Immunohistochemistry 1:20 - 1:50, Immunohistochemistry-Paraffin 1:20 - 1:50, Chromatin Immunoprecipitation (ChIP) 1-10µg per reaction
Application Notes	For IHC-Paraffin, HIER pH 6 retrieval is recommended. In Simple Western only 10-15 uL of the recommended dilution is used per data point. See Simple Western Antibody Database for Simple Western validation: Tested in U-251 MG lysates, separated by Size, antibody dilution of 1:25

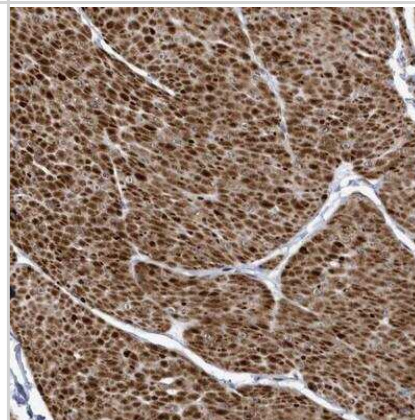


Images

Western Blot: SMC3 Antibody [NBP1-88715] - Lane 1: Marker [kDa] 250, 130, 100, 70, 55, 35, 25, 15, 10. Lane 2: U-251 MG



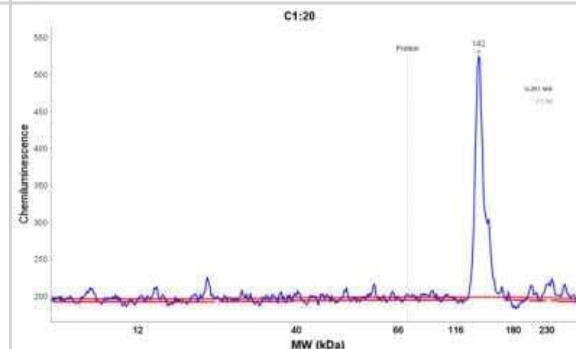
Immunohistochemistry: SMC3 Antibody [NBP1-88715] - Staining of human smooth muscle shows strong cytoplasmic positivity in smooth muscle cells.



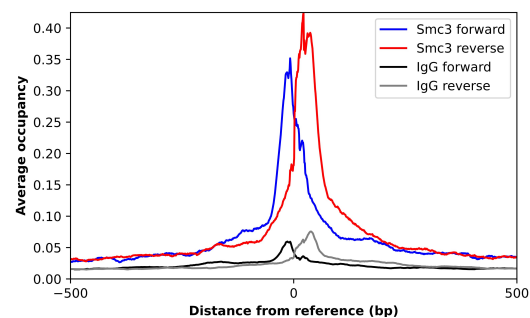
Simple Western: SMC3 Antibody [NBP1-88715] - Simple Western lane view shows a specific band for SMC3 in 0.2 mg/ml of U-251 MG lysate (s). This experiment was performed under reducing conditions using the 12-230 kDa separation systems.



Simple Western: SMC3 Antibody [NBP1-88715] - Electropherogram image of the corresponding Simple Western lane view. SMC3 antibody was used at 1:25 dilution on U-251 MG lysate(s) respectively.



ChIP-Exo-Seq composite graph for Anti-SMC3 (NBP1-88715) tested in K562 cells. Strand-specific reads (blue: forward, red: reverse) and IgG controls (black: forward, grey: reverse) are plotted against the distance from a composite set of reference binding sites. The antibody exhibits robust target enrichment compared to a non-specific IgG control and precisely reveals its structural organization around the binding site. Data generated by Prof. B. F. Pugh's Lab at Cornell University.





Novus Biologicals USA

10730 E. Briarwood Avenue
Centennial, CO 80112
USA
Phone: 303.730.1950
Toll Free: 1.888.506.6887
Fax: 303.730.1966
nb-customerservice@bio-techne.com

Bio-Techne Canada

21 Canmotor Ave
Toronto, ON M8Z 4E6
Canada
Phone: 905.827.6400
Toll Free: 855.668.8722
Fax: 905.827.6402
canada.inquires@bio-techne.com

Bio-Techne Ltd

19 Barton Lane
Abingdon Science Park
Abingdon, OX14 3NB, United Kingdom
Phone: (44) (0) 1235 529449
Free Phone: 0800 37 34 15
Fax: (44) (0) 1235 533420
info.EMEA@bio-techne.com

General Contact Information

www.novusbio.com
Technical Support: nb-technical@bio-techne.com
Orders: nb-customerservice@bio-techne.com
General: novus@novusbio.com

Products Related to NBP1-88715

NBP1-88715PEP	SMC3 Recombinant Protein Antigen
NBP2-33376H	Blue Marker Antibody (6F4-F6) [HRP]
HAF008	Goat anti-Rabbit IgG Secondary Antibody [HRP]
NB7160	Goat anti-Rabbit IgG (H+L) Secondary Antibody [HRP]
NBP2-24891	Rabbit IgG Isotype Control

Limitations

This product is for research use only and is not approved for use in humans or in clinical diagnosis. Primary Antibodies are guaranteed for 1 year from date of receipt.

For more information on our 100% guarantee, please visit www.novusbio.com/guarantee

Earn gift cards/discounts by submitting a review: www.novusbio.com/reviews/submit/NBP1-88715

Earn gift cards/discounts by submitting a publication using this product:
www.novusbio.com/publications

