

Product Datasheet

CREB3L2 Antibody - BSA Free NBP1-88697

Unit Size: 0.1 ml

Store at 4C short term. Aliquot and store at -20C long term. Avoid freeze-thaw cycles.

www.novusbio.com



technical@novusbio.com

Publications: 4

Protocols, Publications, Related Products, Reviews, Research Tools and Images at:
www.novusbio.com/NBP1-88697

Updated 3/4/2026 v.20.1

Earn rewards for product
reviews and publications.

Submit a publication at www.novusbio.com/publications

Submit a review at www.novusbio.com/reviews/destination/NBP1-88697



NBP1-88697

CREB3L2 Antibody - BSA Free

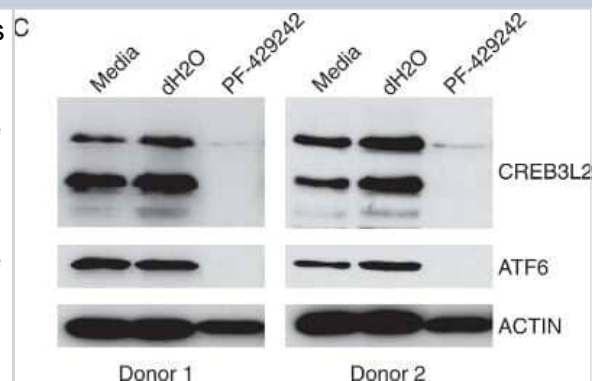
Product Information	
Unit Size	0.1 ml
Concentration	Concentrations vary lot to lot. See vial label for concentration. If unlisted please contact technical services.
Storage	Store at 4C short term. Aliquot and store at -20C long term. Avoid freeze-thaw cycles.
Clonality	Polyclonal
Preservative	0.02% Sodium Azide
Isotype	IgG
Purity	Affinity purified
Buffer	PBS (pH 7.2) and 40% Glycerol

Product Description	
Host	Rabbit
Gene ID	64764
Gene Symbol	CREB3L2
Species	Human, Mouse, Xenopus
Reactivity Notes	Mouse and Xenopus reactivity reported in scientific literature (PMID: 31481663).
Immunogen	This antibody was developed against Recombinant Protein corresponding to amino acids: MEVLESGEQGVLQWDRKLSLSEPGDGEALMYHTHFSELLDEF SQNVLGQLL NDPFLSEKSVSMEVEPSPTSPAPLIQAEHSYSLCEEPR AQSPFTHITSDSFND

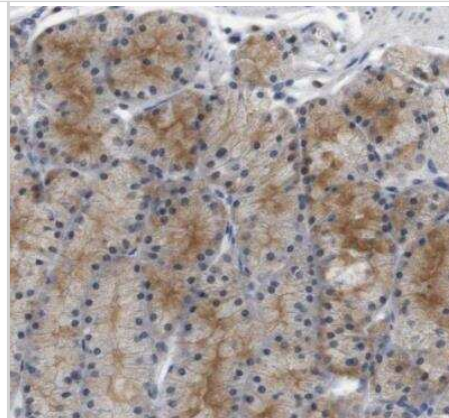
Product Application Details	
Applications	Western Blot, Immunohistochemistry-Paraffin, Immunohistochemistry, Chromatin Immunoprecipitation (ChIP)
Recommended Dilutions	Western Blot 0.4 ug/ml, Immunohistochemistry 1:50 - 1:200, Immunohistochemistry-Paraffin 1:50 - 1:200, Chromatin Immunoprecipitation (ChIP) Reported in scientific literature (PMID:31481663)
Application Notes	IHC-Paraffin, HIER pH 6 retrieval is recommended.

Images

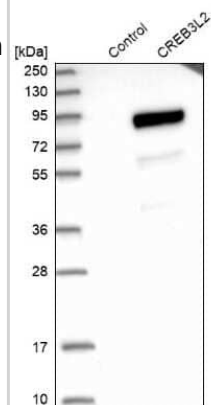
Western Blot: CREB3L2 Antibody [NBP1-88697] - S1P inhibition induces autophagy and affects multiple UPR-related TFs. In vitro day 3 B-cells were treated with 10 uM PF-429242 or vehicle control (dH₂O) for 72 h and were assessed for cell number using CountBright beads. Shown are the average cell numbers from 7 donors +/- standard deviations. Protein lysates generated from day 3 cells treated for 72 h with 10 uM PF-429242 were evaluated for CREB3L2 and ATF6 by Western blotting. Shown are representative results from 2 donors, a total of 7 donors were evaluated. Image collected and cropped by CiteAb from the following publication (<https://www.nature.com/articles/s41598-018-32705-7>), licensed under a CC-BY license.



Immunohistochemistry-Paraffin: CREB3L2 Antibody [NBP1-88697] - Staining of human stomach shows moderate cytoplasmic positivity in glandular cells.



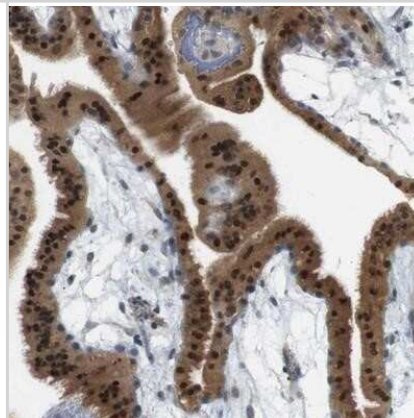
Western Blot: CREB3L2 Antibody [NBP1-88697] - Analysis in control (vector only transfected HEK293T lysate) and CREB3L2 over-expression lysate (Co-expressed with a C-terminal myc-DDK tag (3.1 kDa) in mammalian HEK293T cells).



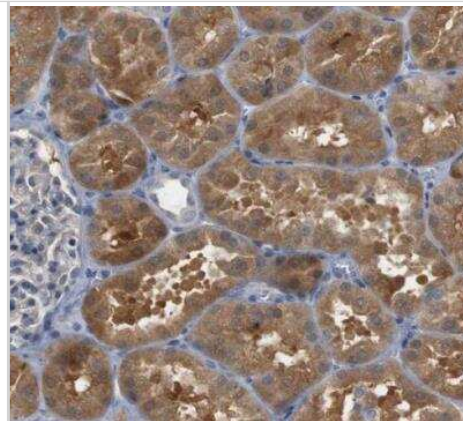
Western Blot: CREB3L2 Antibody [NBP1-88697] - Expression of CREB3L2 in differentiating primary human B-cells. Protein expression of CREB3L2 during in vitro differentiation of primary human B-cells. The day of culture is indicated at the top. Intact and dashed arrows show migration of full-length protein and cleaved C-terminus, respectively. Image collected and cropped by CiteAb from the following publication (<https://www.nature.com/articles/s41598-018-32705-7>), licensed under a CC-BY license.



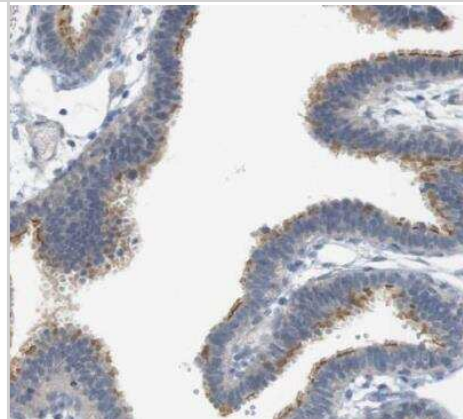
Immunohistochemistry-Paraffin: CREB3L2 Antibody [NBP1-88697] - Staining of human placenta shows strong nuclear and cytoplasmic positivity in trophoblastic cells.



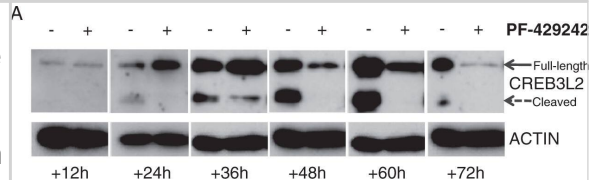
Immunohistochemistry-Paraffin: CREB3L2 Antibody [NBP1-88697] - Staining of human kidney shows strong cytoplasmic positivity in cells in tubules.



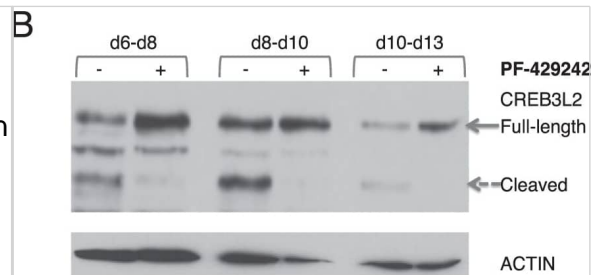
Immunohistochemistry-Paraffin: CREB3L2 Antibody [NBP1-88697] - Staining of human fallopian tube shows moderate cytoplasmic positivity in glandular cells.



Western Blot: CREB3L2 Antibody [NBP1-88697] - Kinetic & dose analysis of S1P-specific inhibitor PF-429242 during the early phase of ASC generation. (A) In vitro activated human B-cells were treated with 10 μ M PF-429242 or vehicle control (dH₂O) at day 3 & assessed for CREB3L2 processing at 12 h intervals. Representative results are shown from a total of 7 donors. (B) Samples from part (A) were assessed for cell number at the indicated time points. Displayed are the average cell number \pm standard deviation derived from 7 donors. (C) In vitro activated human B-cells from 4 donors were treated with indicated amount PF-429242 or vehicle control (dH₂O) at day 3 & assessed for cell number at 48 h. Results are displayed as the percentage viable cells relative to control. Image collected & cropped by CiteAb from the following publication (<https://pubmed.ncbi.nlm.nih.gov/30254311>), licensed under a CC-BY license. Not internally tested by Novus Biologicals.



Western Blot: CREB3L2 Antibody [NBP1-88697] - S1P-specific inhibitor PF-429242 blocks CREB3L2 processing. (A) Diagram of CREB3L2 structure with proteolytic cleavage sites. Act domain, Activation Domain. bZIP, Basic Leucine Zipper Domain. TM, Transmembrane Domain. (B) In vitro generated human ASCs were treated with 10 μ M PF-429242 or vehicle control (dH₂O) on the day that appears first (d6, d8, d10) & protein lysates generated on the day that appears subsequently (d8, d10, d13) were analyzed by Western blotting. Intact & dashed arrows show migration of CREB3L2 full-length protein & cleaved C-terminus, respectively. (C) In vitro differentiated human B-cells were treated with 10 μ M PF-429242 or vehicle control (dH₂O) at day 6 & analyzed subsequently for phenotype on the indicated days. Live cells were evaluated for expression of B-cell markers CD19 & CD20 & ASC markers CD38 & CD138. Percentages of cells are shown within the quadrant gates. The experiment was performed with 4 donors, a representative donor is shown. (D) Samples treated as in part (B) were assessed for cell number using CountBright beads. (E) In vitro activated human B-cells from 4 donors were treated with indicated amount PF-429242 or vehicle control (dH₂O) at day 6 & assessed for cell number at 48 h. Results are displayed as the percentage viable cells relative to control. Supernatants from samples in part (B) were analyzed by ELISA for production of (F) IgM & (G) IgG. Significance was determined by t-test. Image collected & cropped by CiteAb from the following publication (<https://pubmed.ncbi.nlm.nih.gov/30254311>), licensed under a CC-BY license. Not internally tested by Novus Biologicals.



Publications

Hu L, Chen X, Narwade N Et al. Single-cell analysis reveals androgen receptor regulates the ER-to-Golgi trafficking pathway with CREB3L2 to drive prostate cancer progression *Oncogene* 2021-10-05 [PMID: 34611310] (WB)

Khetchoumian K, Balsalobre A, Mayran A et al. Pituitary cell translation and secretory capacities are enhanced cell autonomously by the transcription factor Creb3l2 *Nat Commun* 2019-09-03 [PMID: 31481663] (Chemotaxis, IHC-P, WB, Xenopus, Mouse)

Al-Maskari M, Care MA, Robinson E et al. Site-1 protease function is essential for the generation of antibody secreting cells and reprogramming for secretory activity. *Sci Rep* 2018-09-25 [PMID: 30254311] (WB, Human)

Moller E, Hornick JL, Magnusson L et al. FUS-CREB3L2/L1-positive sarcomas show a specific gene expression profile with upregulation of CD24 and FOXL1. *Clin Cancer Res* 2011-05-01 [PMID: 21536545]



Novus Biologicals USA

10730 E. Briarwood Avenue
Centennial, CO 80112
USA
Phone: 303.730.1950
Toll Free: 1.888.506.6887
Fax: 303.730.1966
nb-customerservice@bio-techne.com

Bio-Techne Canada

21 Canmotor Ave
Toronto, ON M8Z 4E6
Canada
Phone: 905.827.6400
Toll Free: 855.668.8722
Fax: 905.827.6402
canada.inquires@bio-techne.com

Bio-Techne Ltd

19 Barton Lane
Abingdon Science Park
Abingdon, OX14 3NB, United Kingdom
Phone: (44) (0) 1235 529449
Free Phone: 0800 37 34 15
Fax: (44) (0) 1235 533420
info.EMEA@bio-techne.com

General Contact Information

www.novusbio.com
Technical Support: nb-technical@bio-techne.com
Orders: nb-customerservice@bio-techne.com
General: novus@novusbio.com

Products Related to NBP1-88697

NBP1-88697PEP	CREB3L2 Recombinant Protein Antigen
HAF008	Goat anti-Rabbit IgG Secondary Antibody [HRP]
NB7160	Goat anti-Rabbit IgG (H+L) Secondary Antibody [HRP]
NBP2-24891	Rabbit IgG Isotype Control

Limitations

This product is for research use only and is not approved for use in humans or in clinical diagnosis. Primary Antibodies are guaranteed for 1 year from date of receipt.

For more information on our 100% guarantee, please visit www.novusbio.com/guarantee

Earn gift cards/discounts by submitting a review: www.novusbio.com/reviews/submit/NBP1-88697

Earn gift cards/discounts by submitting a publication using this product:
www.novusbio.com/publications

