

# Product Datasheet

## Metaxin 1 Antibody - BSA Free NBP1-87741

Unit Size: 0.1 ml

Store at 4C short term. Aliquot and store at -20C long term. Avoid freeze-thaw cycles.

[www.novusbio.com](http://www.novusbio.com)



[technical@novusbio.com](mailto:technical@novusbio.com)

### Publications: 1

Protocols, Publications, Related Products, Reviews, Research Tools and Images at:  
[www.novusbio.com/NBP1-87741](http://www.novusbio.com/NBP1-87741)

Updated 12/2/2025 v.20.1

Earn rewards for product  
reviews and publications.

Submit a publication at [www.novusbio.com/publications](http://www.novusbio.com/publications)

Submit a review at [www.novusbio.com/reviews/destination/NBP1-87741](http://www.novusbio.com/reviews/destination/NBP1-87741)



**NBP1-87741**

Metaxin 1 Antibody - BSA Free

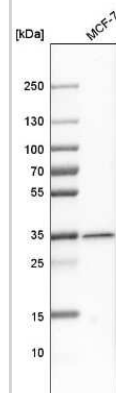
Product Information	
Unit Size	0.1 ml
Concentration	Concentrations vary lot to lot. See vial label for concentration. If unlisted please contact technical services.
Storage	Store at 4C short term. Aliquot and store at -20C long term. Avoid freeze-thaw cycles.
Clonality	Polyclonal
Preservative	0.02% Sodium Azide
Isotype	IgG
Purity	Affinity purified
Buffer	PBS (pH 7.2) and 40% Glycerol

Product Description	
Description	Novus Biologicals Rabbit Metaxin 1 Antibody - BSA Free (NBP1-87741) is a polyclonal antibody validated for use in IHC, WB and ICC/IF. All Novus Biologicals antibodies are covered by our 100% guarantee.
Host	Rabbit
Gene ID	4580
Gene Symbol	MTX1
Species	Human
Immunogen	This antibody was developed against Recombinant Protein corresponding to amino acids: WIDTKNYVEVTRKWYAEAMPFPLNFFLPGRMQRYMERLQLLTGEHRPEDEE ELEKELYREARECLTLLSQRLGSQKFFFGDAPASLDAFVFSYLALLLQAKLPSG

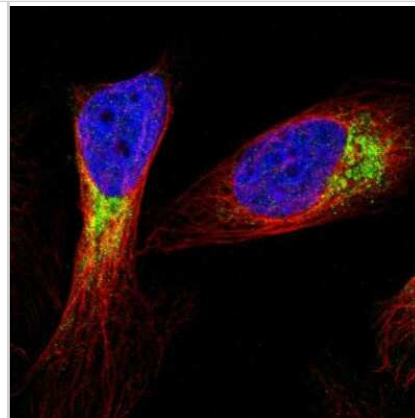
Product Application Details	
Applications	Western Blot, Immunohistochemistry-Paraffin, Immunocytochemistry/Immunofluorescence, Immunohistochemistry
Recommended Dilutions	Western Blot 0.04 - 0.4 ug/ml, Immunohistochemistry 1:20 - 1:50, Immunocytochemistry/ Immunofluorescence 0.25-2 ug/ml, Immunohistochemistry-Paraffin 1:20 - 1:50
Application Notes	For IHC-Paraffin, HIER pH 6 retrieval is recommended. ICC/IF, Fixation Permeabilization: Use PFA/Triton X-100.

**Images**

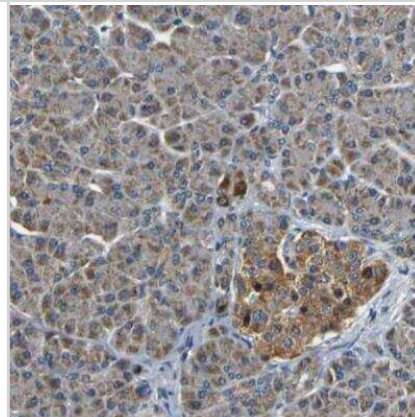
Western Blot: Metaxin 1 Antibody [NBP1-87741] - Analysis in human cell line MCF-7.



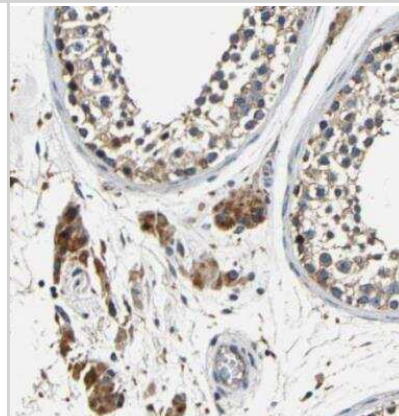
Immunocytochemistry/Immunofluorescence: Metaxin 1 Antibody [NBP1-87741] - Staining of human cell line U-2 OS shows localization to mitochondria. Antibody staining is shown in green.



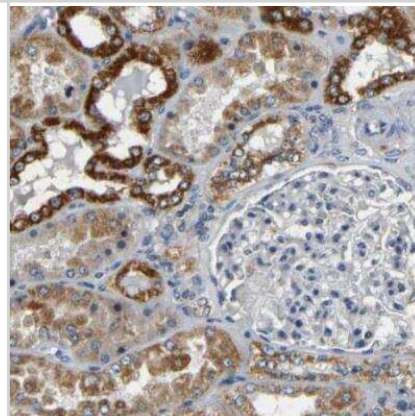
Immunohistochemistry-Paraffin: Metaxin 1 Antibody [NBP1-87741] - Staining of human pancreas shows moderate granular cytoplasmic positivity in islets and Langerhans.



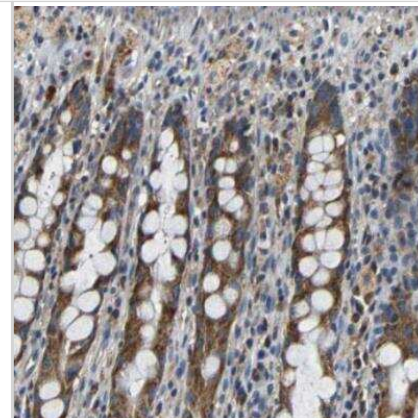
Immunohistochemistry-Paraffin: Metaxin 1 Antibody [NBP1-87741] - Staining of human testis shows strong granular cytoplasmic positivity in cells in seminiferous ducts and Leydig cells.



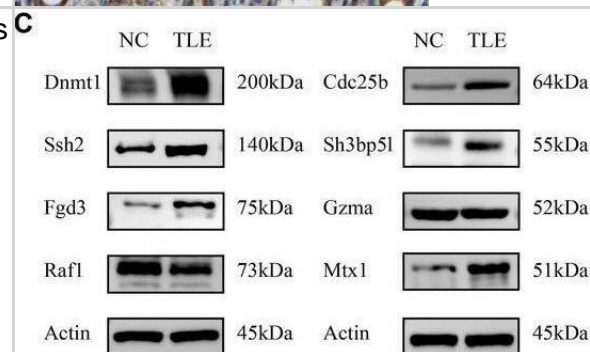
Immunohistochemistry-Paraffin: Metaxin 1 Antibody [NBP1-87741] - Staining of human kidney shows strong granular cytoplasmic positivity in cells in tubules.



Immunohistochemistry-Paraffin: Metaxin 1 Antibody [NBP1-87741] - Staining of human rectum shows moderate granular cytoplasmic positivity in glandular cells.



Expression of key genes at mRNA and protein levels in the hippocampus of TLE animal model. (A) Construction of the TLE mouse model. It primarily illustrates the process of animal anesthesia and fixation, kainic acid injection localization, brain tissue separation on ice, and hippocampus extraction. (B) Expression levels of core genes' corresponding mRNA in the hippocampus of NC and TLE groups identified by qPCR. Data are shown as mean  $\pm$  SE. (C) Western blot analysis of hippocampal lysates displaying the protein levels of Dnmt1, Cdc25b, Ssh2, Fgd3, Gzma, Raf1, and Mx1 with Actin serving as a loading control. Approximate molecular weights are indicated. (D) Quantification of Western blot analysis of the protein bands in Figure C, through relative gray values compared across NC and TLE hippocampus samples. (E) Quantitative analyses of immunofluorescence staining showing the fluorescence intensity between NC and TLE in Figure F. (F) Representative immunofluorescence images showing the hippocampal localization of Cdc25b, Raf1, Fgd3, Dnmt1, Mx1, and Ssh2 (red) with DAPI staining the nuclei (blue) in NC and TLE groups (Scale bar, 100  $\mu$ m). (TLE, temporal lobe epilepsy; NC, normal control. \* $p < 0.05$ , \*\* $p < 0.01$ , \*\*\* $p < 0.001$ , ns, not significant.) Image collected and cropped by CiteAb from the following open publication (<https://pubmed.ncbi.nlm.nih.gov/39753851>), licensed under a CC-BY license. Not internally tested by Novus Biologicals.



## Publications

Shi J, Xie J, Yang Y et al. Integrated Mendelian Randomization and Single-Cell Transcriptomics Analysis Identifies Critical Blood Biomarkers and Potential Mechanisms in Epilepsy CNS Neuroscience & Therapeutics 2025-01-03 [PMID: 39753851]



### **Novus Biologicals USA**

10730 E. Briarwood Avenue  
Centennial, CO 80112  
USA  
Phone: 303.730.1950  
Toll Free: 1.888.506.6887  
Fax: 303.730.1966  
nb-customerservice@bio-techne.com

### **Bio-Techne Canada**

21 Canmotor Ave  
Toronto, ON M8Z 4E6  
Canada  
Phone: 905.827.6400  
Toll Free: 855.668.8722  
Fax: 905.827.6402  
canada.inquires@bio-techne.com

### **Bio-Techne Ltd**

19 Barton Lane  
Abingdon Science Park  
Abingdon, OX14 3NB, United Kingdom  
Phone: (44) (0) 1235 529449  
Free Phone: 0800 37 34 15  
Fax: (44) (0) 1235 533420  
info.EMEA@bio-techne.com

### **General Contact Information**

www.novusbio.com  
Technical Support: nb-technical@bio-techne.com  
Orders: nb-customerservice@bio-techne.com  
General: novus@novusbio.com

### **Products Related to NBP1-87741**

---

NBP1-87741PEP	Metaxin 1 Recombinant Protein Antigen
NBP2-33376H	Blue Marker Antibody (6F4-F6) [HRP]
HAF008	Goat anti-Rabbit IgG Secondary Antibody [HRP]
NB7160	Goat anti-Rabbit IgG (H+L) Secondary Antibody [HRP]
NBP2-24891	Rabbit IgG Isotype Control

---

### **Limitations**

This product is for research use only and is not approved for use in humans or in clinical diagnosis. Primary Antibodies are guaranteed for 1 year from date of receipt.

For more information on our 100% guarantee, please visit [www.novusbio.com/guarantee](http://www.novusbio.com/guarantee)

Earn gift cards/discounts by submitting a review: [www.novusbio.com/reviews/submit/NBP1-87741](http://www.novusbio.com/reviews/submit/NBP1-87741)

Earn gift cards/discounts by submitting a publication using this product:  
[www.novusbio.com/publications](http://www.novusbio.com/publications)

