

Product Datasheet

CD39L4/ENTPD5 Antibody - BSA Free NBP1-85751

Unit Size: 0.1 ml

Store at 4C short term. Aliquot and store at -20C long term. Avoid freeze-thaw cycles.

www.novusbio.com



technical@novusbio.com

Publications: 1

Protocols, Publications, Related Products, Reviews, Research Tools and Images at:
www.novusbio.com/NBP1-85751

Updated 12/2/2025 v.20.1

Earn rewards for product
reviews and publications.

Submit a publication at www.novusbio.com/publications

Submit a review at www.novusbio.com/reviews/destination/NBP1-85751



NBP1-85751**CD39L4/ENTPD5 Antibody - BSA Free**

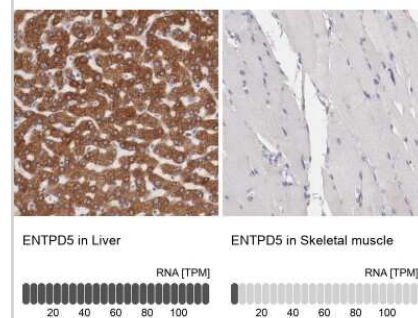
| Product Information | |
|----------------------------|--|
| Unit Size | 0.1 ml |
| Concentration | Concentrations vary lot to lot. See vial label for concentration. If unlisted please contact technical services. |
| Storage | Store at 4C short term. Aliquot and store at -20C long term. Avoid freeze-thaw cycles. |
| Clonality | Polyclonal |
| Preservative | 0.02% Sodium Azide |
| Isotype | IgG |
| Purity | Affinity purified |
| Buffer | PBS (pH 7.2) and 40% Glycerol |

| Product Description | |
|----------------------------|--|
| Description | Novus Biologicals Rabbit CD39L4/ENTPD5 Antibody - BSA Free (NBP1-85751) is a polyclonal antibody validated for use in IHC, WB and Simple Western. Anti-CD39L4/ENTPD5 Antibody: Cited in 1 publication. All Novus Biologicals antibodies are covered by our 100% guarantee. |
| Host | Rabbit |
| Gene ID | 957 |
| Gene Symbol | ENTPD5 |
| Species | Human |
| Reactivity Notes | Immunogen displays the following percentage of sequence identity for non-tested species: Mouse (88%), Rat (87%). Reactivity reported in scientific literature (PMID: 24435307) |
| Immunogen | This antibody was developed against Recombinant Protein corresponding to amino acids: AGSTGTRIHVYTFVQKMPGQLPILEGEVFDVSVKPGLSAFVDQPKQGAETVQGL LEVAKDSIPRSHWKKTPVVLKATAGLRLLEPHKAKALLFEVKEIFRKSPFLVPKG SVSIMDGSDEGILAWVTVNFLTGQLHGHRQETVGTL |

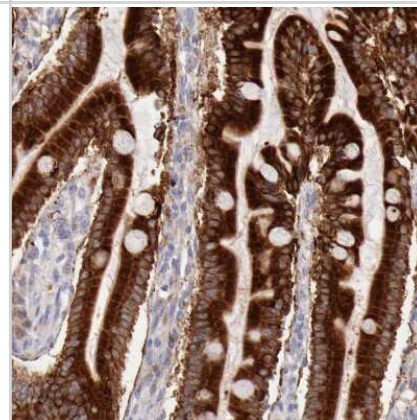
| Product Application Details | |
|------------------------------------|---|
| Applications | Western Blot, Simple Western, Immunohistochemistry-Paraffin, Immunohistochemistry |
| Recommended Dilutions | Western Blot 0.04-0.4 ug/ml, Simple Western 1:25, Immunohistochemistry 1:50 - 1:200, Immunohistochemistry-Paraffin 1:50 - 1:200 |
| Application Notes | For IHC-Paraffin, HIER pH 6 retrieval is recommended. In Simple Western only 10 - 15 uL of the recommended dilution is used per data point. See Simple Western Antibody Database for Simple Western validation: Tested in h. Liver lysate(s), separated by Size, antibody dilution of 1:25, apparent MW was 57 kDa. |

Images

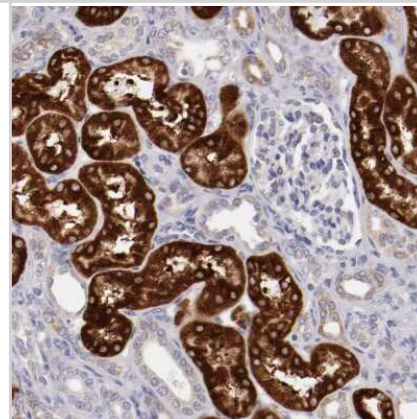
Immunohistochemistry-Paraffin: CD39L4/ENTPD5 Antibody [NBP1-85751] - Analysis in human liver and skeletal muscle tissues using NBP1-85751 antibody. Corresponding ENTPD5 RNA-seq data are presented for the same tissues.



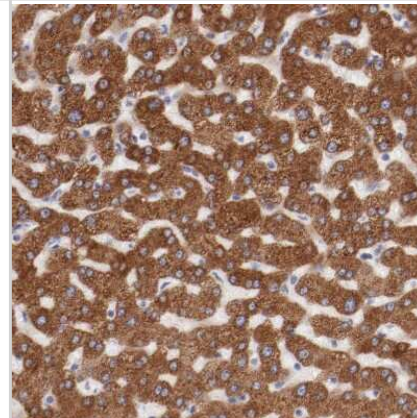
Immunohistochemistry-Paraffin: CD39L4/ENTPD5 Antibody [NBP1-85751] - Staining of human duodenum shows strong cytoplasmic positivity in glandular cells.



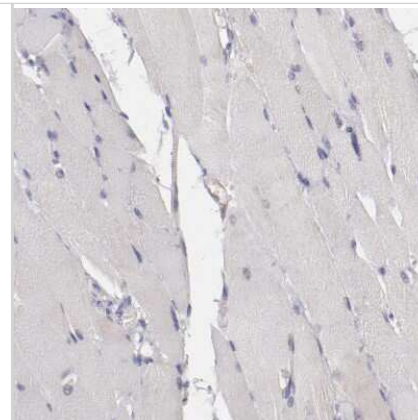
Immunohistochemistry-Paraffin: CD39L4/ENTPD5 Antibody [NBP1-85751] - Staining of human kidney shows strong cytoplasmic positivity in cells in proximal tubules.



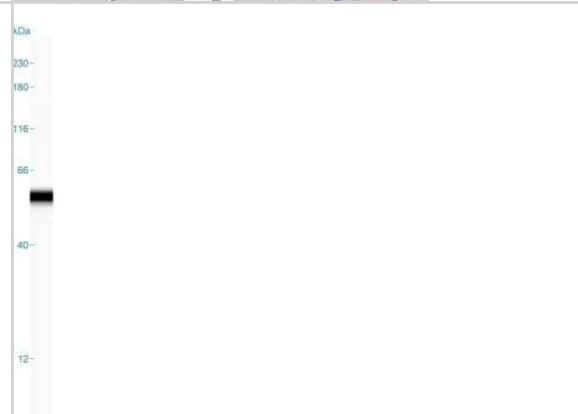
Immunohistochemistry-Paraffin: CD39L4/ENTPD5 Antibody [NBP1-85751] - Staining of human liver shows strong cytoplasmic positivity in hepatocytes.



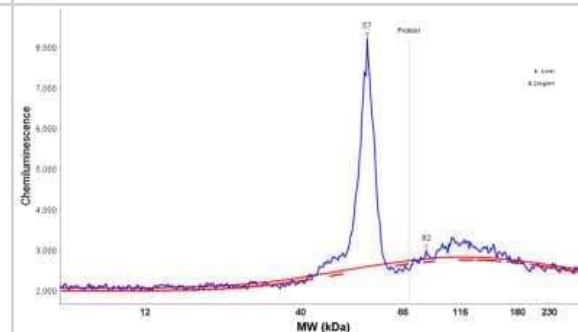
Immunohistochemistry-Paraffin: CD39L4/ENTPD5 Antibody [NBP1-85751] - Staining of human skeletal muscle shows no positivity in myocytes as expected.



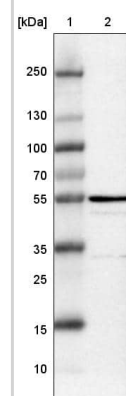
Simple Western: CD39L4/ENTPD5 Antibody [NBP1-85751] - Simple Western lane view shows a specific band for CD39L4/ENTPD5 in 0.2 mg/ml of h. Liver lysate(s). This experiment was performed under reducing conditions using the 12-230 kDa separation system.



Simple Western: CD39L4/ENTPD5 Antibody [NBP1-85751] - Electropherogram image of the corresponding Simple Western lane view. CD39L4/ENTPD5 antibody was used at 1:25 dilution on h. Liver lysate(s) respectively.



Lane 1: Marker [kDa] 250, 130, 100, 70, 55, 35, 25, 15, 10
Lane 2: Human Liver tissue



Publications

Horak P, Tomasich E, Vanhara P et al. TUSC3 Loss Alters the ER Stress Response and Accelerates Prostate Cancer Growth in vivo. Sci Rep 2014-01-17 [PMID: 24435307]



Novus Biologicals USA

10730 E. Briarwood Avenue
Centennial, CO 80112
USA
Phone: 303.730.1950
Toll Free: 1.888.506.6887
Fax: 303.730.1966
nb-customerservice@bio-techne.com

Bio-Techne Canada

21 Canmotor Ave
Toronto, ON M8Z 4E6
Canada
Phone: 905.827.6400
Toll Free: 855.668.8722
Fax: 905.827.6402
canada.inquires@bio-techne.com

Bio-Techne Ltd

19 Barton Lane
Abingdon Science Park
Abingdon, OX14 3NB, United Kingdom
Phone: (44) (0) 1235 529449
Free Phone: 0800 37 34 15
Fax: (44) (0) 1235 533420
info.EMEA@bio-techne.com

General Contact Information

www.novusbio.com
Technical Support: nb-technical@bio-techne.com
Orders: nb-customerservice@bio-techne.com
General: novus@novusbio.com

Products Related to NBP1-85751

| | |
|---------------|---|
| NBP1-85751PEP | CD39L4/ENTPD5 Recombinant Protein Antigen |
| NBP2-33376H | Blue Marker Antibody (6F4-F6) [HRP] |
| HAF008 | Goat anti-Rabbit IgG Secondary Antibody [HRP] |
| NB7160 | Goat anti-Rabbit IgG (H+L) Secondary Antibody [HRP] |
| NBP2-24891 | Rabbit IgG Isotype Control |

Limitations

This product is for research use only and is not approved for use in humans or in clinical diagnosis. Primary Antibodies are guaranteed for 1 year from date of receipt.

For more information on our 100% guarantee, please visit www.novusbio.com/guarantee

Earn gift cards/discounts by submitting a review: www.novusbio.com/reviews/submit/NBP1-85751

Earn gift cards/discounts by submitting a publication using this product:
www.novusbio.com/publications

