

# Product Datasheet

## DKC1 Antibody - BSA Free NBP1-85156

Unit Size: 0.1 ml

Store at 4C short term. Aliquot and store at -20C long term. Avoid freeze-thaw cycles.

[www.novusbio.com](http://www.novusbio.com)



[technical@novusbio.com](mailto:technical@novusbio.com)

### Publications: 5

Protocols, Publications, Related Products, Reviews, Research Tools and Images at:  
[www.novusbio.com/NBP1-85156](http://www.novusbio.com/NBP1-85156)

Updated 12/2/2025 v.20.1

Earn rewards for product  
reviews and publications.

Submit a publication at [www.novusbio.com/publications](http://www.novusbio.com/publications)

Submit a review at [www.novusbio.com/reviews/destination/NBP1-85156](http://www.novusbio.com/reviews/destination/NBP1-85156)



**NBP1-85156**

DKC1 Antibody - BSA Free

Product Information	
Unit Size	0.1 ml
Concentration	Concentrations vary lot to lot. See vial label for concentration. If unlisted please contact technical services.
Storage	Store at 4C short term. Aliquot and store at -20C long term. Avoid freeze-thaw cycles.
Clonality	Polyclonal
Preservative	0.02% Sodium Azide
Isotype	IgG
Purity	Affinity purified
Buffer	PBS (pH 7.2) and 40% Glycerol

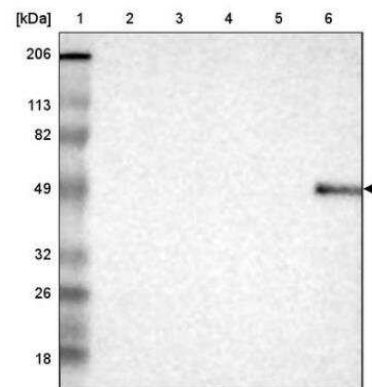
Product Description	
Description	Novus Biologicals Rabbit DKC1 Antibody - BSA Free (NBP1-85156) is a polyclonal antibody validated for use in IHC and WB. Anti-DKC1 Antibody: Cited in 5 publications. All Novus Biologicals antibodies are covered by our 100% guarantee.
Host	Rabbit
Gene ID	1736
Gene Symbol	DKC1
Species	Human
Reactivity Notes	Reactivity reported in scientific literature (PMID: 23435261)
Immunogen	This antibody was developed against Recombinant Protein corresponding to amino acids: EAGTYIRTLCVHLGLLLGVGGQMQLRRVRSQVMSEKDHMVTMHDVLDLDAQWL YDNHKDESYLRRVVYPLEKLLTSHKRLVMKDSAVNAICYGAKIMLPGLVRYEDG IEVNQEIVVIT

Product Application Details	
Applications	Western Blot, Immunohistochemistry-Paraffin, Immunohistochemistry
Recommended Dilutions	Western Blot 0.04 - 0.4 ug/ml, Immunohistochemistry 1:50 - 1:200, Immunohistochemistry-Paraffin 1:50 - 1:200
Application Notes	For IHC-Paraffin, Retrieval method: HIER pH6.

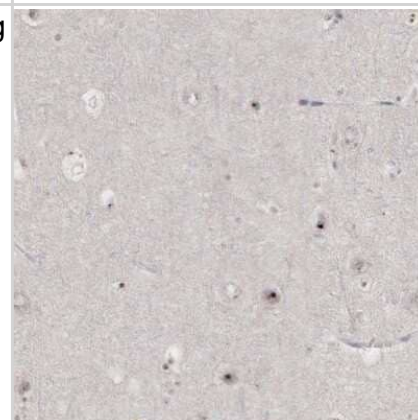


## Images

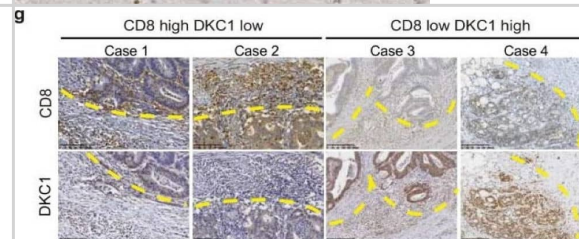
Western Blot: DKC1 Antibody [NBP1-85156] - Lane 1: Marker [kDa] 206, 113, 82, 49, 32, 26, 18 Lane 2: Human cell line RT-4 Lane 3: Human cell line U-251MG sp Lane 4: Human cell line A-431 Lane 5: Human liver tissue Lane 6: Human tonsil tissue



Immunohistochemistry-Paraffin: DKC1 Antibody [NBP1-85156] - Staining of human cerebral cortex shows strong nucleolar positivity in neuronal cells.



Distinct immune microenvironments exist in CI and CII. (a) Comparisons of Lymphocytes Fraction (see Section 4) between two clusters in two CRC databases by different immune fraction analysis, xcell, and ESTIMATE [31,32]. (b) Comparisons of Macrophages between two clusters in 2014 CPTAC CRC databases analyzed by three methods, xcell, CIBERSORT, and immune staining of CRC databases [31,33,34]. (c) Comparisons of Monocytes between two clusters in 2019 CPTAC CRC Label free databases analyzed by xcell. (d) The distribution of patients belonging to two clusters in four different immune subtypes from Thorsson et al., 2018, Immunity [35]. (e) Scatter diagram showing correlations of DKC1 protein expression with CD8+ Tcm cells in total patients in 2014 CPTAC CRC databases. (f) Scatter diagram showing correlations of DKC1 protein expression with CD8+ Tcm cells in CI or CII cluster in 2014 CPTAC CRC databases. (g) Representative images of DKC1 immunohistochemistry staining and CD8+ T cells in colorectal cancer tissues. (h) Spearman correlation of DKC1 expression with CD8+ T cells in invasive front (where tumor invaded normal lamina propria) in colorectal cancer. (i) The relative DKC1 and CD8 expression of patients in Immunohistochemical high and low score groups (divided by median expression) (\*  $p < 0.05$ , \*\*  $p < 0.01$ , \*\*\*  $p < 0.001$ , error bar indicates  $\pm$  SEM). (j) Volcano plot showing immunomodulators' proteomics in CII versus CI in two CRC proteomics databases. Blue indicates  $\text{Log}_2$  (fold change (CII/CI)  $> 0.5$ ,  $p < 0.05$ ) [35]. (k) The boxplot showing the mRNA expressions of immunomodulators in 2014 and 2019 CRC databases. Image collected and cropped by CiteAb from the following open publication (<https://pubmed.ncbi.nlm.nih.gov/36428700>), licensed under a CC-BY license. Not internally tested by Novus Biologicals.



**Publications**

Zhao W, Pei Q, Zhu Y et al. The Association of R-Loop Binding Proteins Subtypes with CIN Implicates Therapeutic Strategies in Colorectal Cancer *Cancers* 2022-11-15 [PMID: 36428700] (IF/IHC)

Stadler C, Rexhepaj E, Singan VR et al. Immunofluorescence and fluorescent-protein tagging show high correlation for protein localization in mammalian cells. *Nat Methods* 2013-04-01 [PMID: 23435261]

Koskimaa HM, Kurvinen K, Costa S et al. Molecular markers implicating early malignant events in cervical carcinogenesis. *Cancer Epidemiol Biomarkers Prev* 2010-08-01 [PMID: 20647402]

Sieron P, Hader C, Hatina J et al. DKC1 overexpression associated with prostate cancer progression. *Br J Cancer* 2009-10-01 [PMID: 19755982]

Montanaro L, Calienni M, Ceccarelli C et al. Relationship between dyskerin expression and telomerase activity in human breast cancer. *Cell Oncol* 2008-01-01 [PMID: 18936525]





### **Novus Biologicals USA**

10730 E. Briarwood Avenue  
Centennial, CO 80112  
USA  
Phone: 303.730.1950  
Toll Free: 1.888.506.6887  
Fax: 303.730.1966  
nb-customerservice@bio-techne.com

### **Bio-Techne Canada**

21 Canmotor Ave  
Toronto, ON M8Z 4E6  
Canada  
Phone: 905.827.6400  
Toll Free: 855.668.8722  
Fax: 905.827.6402  
canada.inquires@bio-techne.com

### **Bio-Techne Ltd**

19 Barton Lane  
Abingdon Science Park  
Abingdon, OX14 3NB, United Kingdom  
Phone: (44) (0) 1235 529449  
Free Phone: 0800 37 34 15  
Fax: (44) (0) 1235 533420  
info.EMEA@bio-techne.com

### **General Contact Information**

www.novusbio.com  
Technical Support: nb-technical@bio-techne.com  
Orders: nb-customerservice@bio-techne.com  
General: novus@novusbio.com

### **Products Related to NBP1-85156**

---

NBP1-85156PEP	DKC1 Recombinant Protein Antigen
NBP2-33376H	Blue Marker Antibody (6F4-F6) [HRP]
HAF008	Goat anti-Rabbit IgG Secondary Antibody [HRP]
NB7160	Goat anti-Rabbit IgG (H+L) Secondary Antibody [HRP]
NBP2-24891	Rabbit IgG Isotype Control

---

### **Limitations**

This product is for research use only and is not approved for use in humans or in clinical diagnosis. Primary Antibodies are guaranteed for 1 year from date of receipt.

For more information on our 100% guarantee, please visit [www.novusbio.com/guarantee](http://www.novusbio.com/guarantee)

Earn gift cards/discounts by submitting a review: [www.novusbio.com/reviews/submit/NBP1-85156](http://www.novusbio.com/reviews/submit/NBP1-85156)

Earn gift cards/discounts by submitting a publication using this product:  
[www.novusbio.com/publications](http://www.novusbio.com/publications)

