

Product Datasheet

Creatine Kinase BB Antibody - BSA Free NBP1-84460

Unit Size: 0.1 ml

Store at 4C short term. Aliquot and store at -20C long term. Avoid freeze-thaw cycles.

www.novusbio.com



technical@novusbio.com

Publications: 4

Protocols, Publications, Related Products, Reviews, Research Tools and Images at:
www.novusbio.com/NBP1-84460

Updated 12/2/2025 v.20.1

Earn rewards for product
reviews and publications.

Submit a publication at www.novusbio.com/publications

Submit a review at www.novusbio.com/reviews/destination/NBP1-84460



NBP1-84460

Creatine Kinase BB Antibody - BSA Free

Product Information	
Unit Size	0.1 ml
Concentration	Concentrations vary lot to lot. See vial label for concentration. If unlisted please contact technical services.
Storage	Store at 4C short term. Aliquot and store at -20C long term. Avoid freeze-thaw cycles.
Clonality	Polyclonal
Preservative	0.02% Sodium Azide
Isotype	IgG
Purity	Affinity purified
Buffer	PBS (pH 7.2) and 40% Glycerol

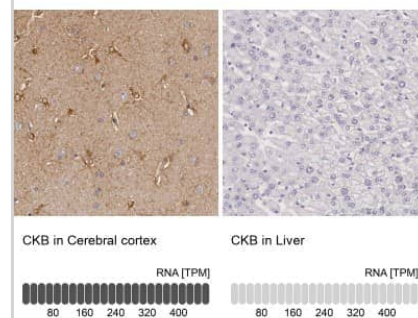
Product Description	
Description	Novus Biologicals Rabbit Creatine Kinase BB Antibody - BSA Free (NBP1-84460) is a polyclonal antibody validated for use in IHC, WB and ICC/IF. Anti-Creatine Kinase BB Antibody: Cited in 4 publications. All Novus Biologicals antibodies are covered by our 100% guarantee.
Host	Rabbit
Gene ID	1152
Gene Symbol	CKB
Species	Human
Immunogen	This antibody was developed against Recombinant Protein corresponding to amino acids: VISMQKGGNMKEVFTRFCTGLTQIETLFKSKDYEFMWNPHLGYILTCPSNLGTG LRAGVHIKLPNLGKHEKFSEVLKRLRLQKRGTTGGVDTAAVGGVFDVSNADRLG FSEVELVQMVDGKLLIEMEQRLEQQAIDDLMPAQK

Product Application Details	
Applications	Western Blot, Immunohistochemistry-Paraffin, Immunocytochemistry/Immunofluorescence, Immunohistochemistry
Recommended Dilutions	Western Blot Reported in scientific literature (PMID: 26460485), Immunohistochemistry 1:200 - 1:500, Immunocytochemistry/Immunofluorescence 0.25-2 ug/ml, Immunohistochemistry-Paraffin 1:200 - 1:500
Application Notes	For IHC-Paraffin, HIER pH 6 retrieval is recommended. ICC/IF Fixation Permeabilization: Use PFA/Triton X-100.

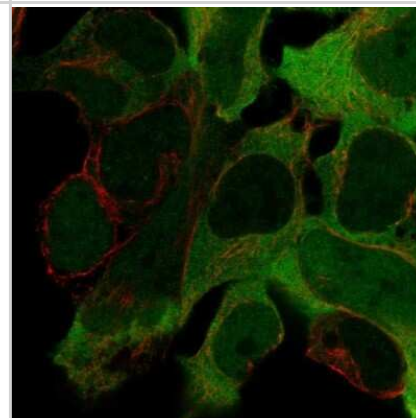


Images

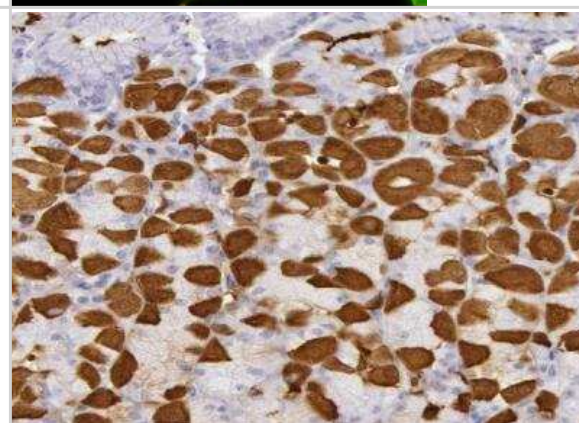
Immunohistochemistry-Paraffin: Creatine Kinase BB Antibody [NBP1-84460] - Analysis in human cerebral cortex and liver tissues. Corresponding Creatine Kinase BB RNA-seq data are presented for the same tissues.



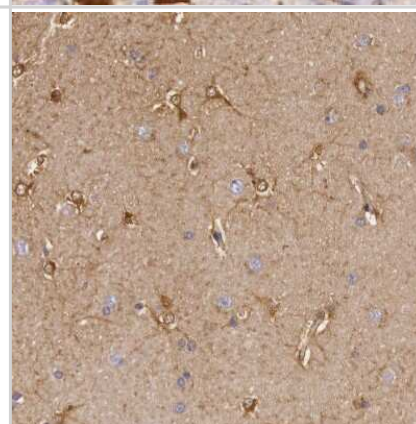
Immunocytochemistry/Immunofluorescence: Creatine Kinase BB Antibody [NBP1-84460] - Immunofluorescent staining of human cell line HEK 293 shows localization to cytosol.



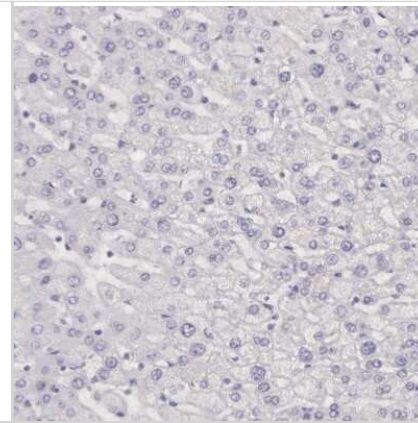
Immunohistochemistry-Paraffin: Creatine Kinase BB Antibody [NBP1-84460] - Staining of human stomach shows strong cytoplasmic positivity in parietal cells.



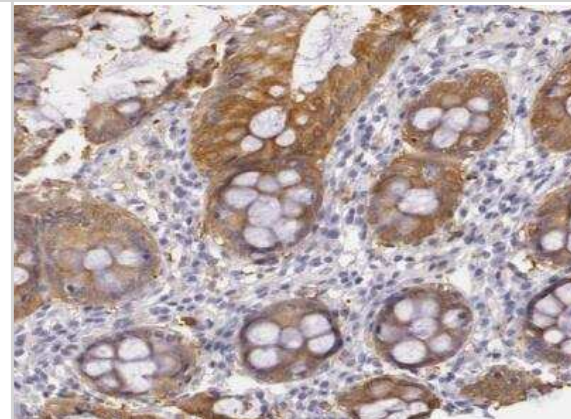
Immunohistochemistry-Paraffin: Creatine Kinase BB Antibody [NBP1-84460] - Staining of human cerebral cortex shows weak to moderate cytoplasmic positivity in astrocytes.



Immunohistochemistry-Paraffin: Creatine Kinase BB Antibody [NBP1-84460] - Staining of human liver shows no positivity in hepatocytes as expected.



Immunohistochemistry-Paraffin: Creatine Kinase BB Antibody [NBP1-84460] - Staining of human rectum shows moderate cytoplasmic positivity in glandular cells.



Publications

Shaw A, TOth B, Arianti R Et al. BMP7 increases UCP1-dependent and independent thermogenesis with a unique gene expression program in human neck area derived adipocytes *Pharmaceuticals* 2021-09-28 [PMID: 34832860]

Mello AA, Leal MF, Rey JA et al. Deregulated Expression of SRC, LYN and CKB Kinases by DNA Methylation and Its Potential Role in Gastric Cancer Invasiveness and Metastasis. *PLoS One* 2015-01-01 [PMID: 26460485] (IF/IHC, WB, Human)

Bachmann J, Burte F, Pramana S et al. Affinity Proteomics Reveals Elevated Muscle Proteins in Plasma of Children with Cerebral Malaria. *PLoS Pathog* 2014-04-01 [PMID: 24743550]

Kato BS, Nicholson G, Neiman M et al. Variance decomposition of protein profiles from antibody arrays using a longitudinal twin model. *Proteome Sci* 2011-11-17 [PMID: 22093360]



Novus Biologicals USA

10730 E. Briarwood Avenue
Centennial, CO 80112
USA
Phone: 303.730.1950
Toll Free: 1.888.506.6887
Fax: 303.730.1966
nb-customerservice@bio-techne.com

Bio-Techne Canada

21 Canmotor Ave
Toronto, ON M8Z 4E6
Canada
Phone: 905.827.6400
Toll Free: 855.668.8722
Fax: 905.827.6402
canada.inquires@bio-techne.com

Bio-Techne Ltd

19 Barton Lane
Abingdon Science Park
Abingdon, OX14 3NB, United Kingdom
Phone: (44) (0) 1235 529449
Free Phone: 0800 37 34 15
Fax: (44) (0) 1235 533420
info.EMEA@bio-techne.com

General Contact Information

www.novusbio.com
Technical Support: nb-technical@bio-techne.com
Orders: nb-customerservice@bio-techne.com
General: novus@novusbio.com

Products Related to NBP1-84460

NBP1-84460PEP	Creatine Kinase BB Recombinant Protein Antigen
NBP2-33376H	Blue Marker Antibody (6F4-F6) [HRP]
HAF008	Goat anti-Rabbit IgG Secondary Antibody [HRP]
NB7160	Goat anti-Rabbit IgG (H+L) Secondary Antibody [HRP]
NBP2-24891	Rabbit IgG Isotype Control

Limitations

This product is for research use only and is not approved for use in humans or in clinical diagnosis. Primary Antibodies are guaranteed for 1 year from date of receipt.

For more information on our 100% guarantee, please visit www.novusbio.com/guarantee

Earn gift cards/discounts by submitting a review: www.novusbio.com/reviews/submit/NBP1-84460

Earn gift cards/discounts by submitting a publication using this product:
www.novusbio.com/publications

