

# Product Datasheet

## RPL10 Antibody - BSA Free

### NBP1-84037

Unit Size: 0.1 ml

Store at 4C short term. Aliquot and store at -20C long term. Avoid freeze-thaw cycles.

[www.novusbio.com](http://www.novusbio.com)



[technical@novusbio.com](mailto:technical@novusbio.com)

#### Publications: 3

Protocols, Publications, Related Products, Reviews, Research Tools and Images at:  
[www.novusbio.com/NBP1-84037](http://www.novusbio.com/NBP1-84037)

Updated 12/2/2025 v.20.1

Earn rewards for product  
reviews and publications.

Submit a publication at [www.novusbio.com/publications](http://www.novusbio.com/publications)

Submit a review at [www.novusbio.com/reviews/destination/NBP1-84037](http://www.novusbio.com/reviews/destination/NBP1-84037)



**NBP1-84037**

RPL10 Antibody - BSA Free

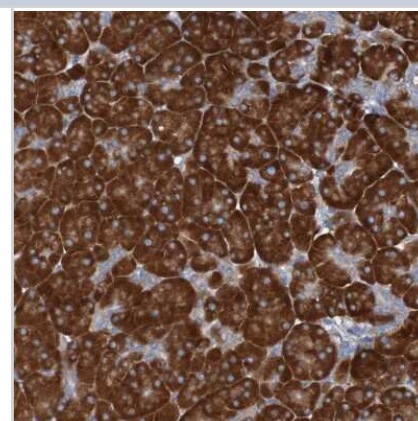
Product Information	
<b>Unit Size</b>	0.1 ml
<b>Concentration</b>	Concentrations vary lot to lot. See vial label for concentration. If unlisted please contact technical services.
<b>Storage</b>	Store at 4C short term. Aliquot and store at -20C long term. Avoid freeze-thaw cycles.
<b>Clonality</b>	Polyclonal
<b>Preservative</b>	0.02% Sodium Azide
<b>Isotype</b>	IgG
<b>Purity</b>	Affinity purified
<b>Buffer</b>	PBS (pH 7.2) and 40% Glycerol

Product Description	
<b>Description</b>	Novus Biologicals Rabbit RPL10 Antibody - BSA Free (NBP1-84037) is a polyclonal antibody validated for use in IHC and WB. Anti-RPL10 Antibody: Cited in 3 publications. All Novus Biologicals antibodies are covered by our 100% guarantee.
<b>Host</b>	Rabbit
<b>Gene ID</b>	6134
<b>Gene Symbol</b>	RPL10
<b>Species</b>	Human, Mouse, Rat
<b>Immunogen</b>	This antibody was developed against Recombinant Protein corresponding to amino acids: KMSSCAGADRLQTGMRGAFGKPGQTVARVHIGQVIMSIRTKLQNKHEHVIEALR RAKFKFPGRQKIHISKKWGFTKFNADEFEDMVAEKRLIPDGCYVYIPSRGPLD KWW

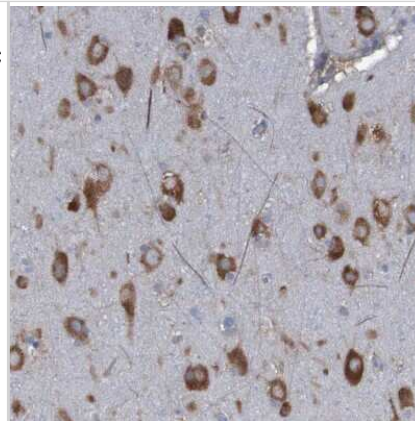
Product Application Details	
<b>Applications</b>	Western Blot, Immunohistochemistry-Paraffin, Immunohistochemistry
<b>Recommended Dilutions</b>	Western Blot 0.04-0.4 ug/ml, Immunohistochemistry 1:50 - 1:200, Immunohistochemistry-Paraffin 1:50 - 1:200
<b>Application Notes</b>	For IHC-Paraffin, HIER pH 6 retrieval is recommended.

**Images**

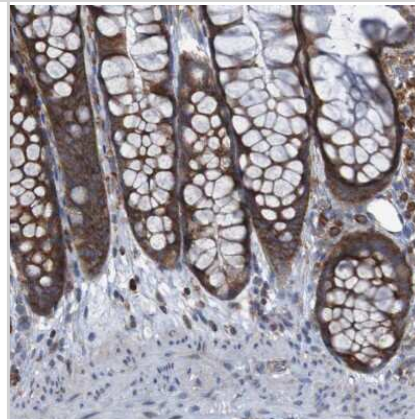
Immunohistochemistry-Paraffin: RPL10 Antibody [NBP1-84037] - Staining of human pancreas shows strong cytoplasmic positivity in exocrine glandular cells.



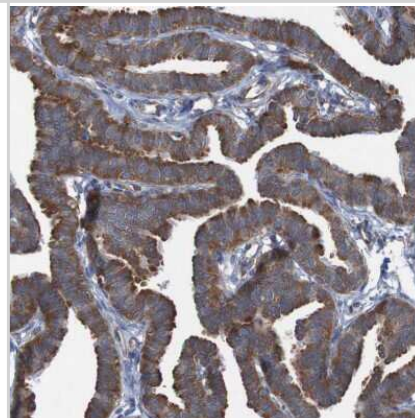
Immunohistochemistry-Paraffin: RPL10 Antibody [NBP1-84037] - Staining of human cerebral cortex shows moderate to strong cytoplasmic positivity in neurons.



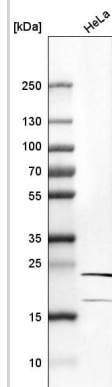
Immunohistochemistry-Paraffin: RPL10 Antibody [NBP1-84037] - Staining of human colon shows strong cytoplasmic positivity in glandular cells.



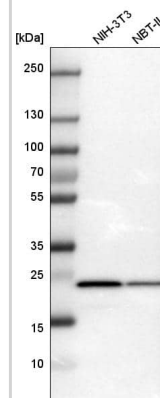
Immunohistochemistry-Paraffin: RPL10 Antibody [NBP1-84037] - Staining of human fallopian tube shows moderate cytoplasmic positivity in glandular cells.



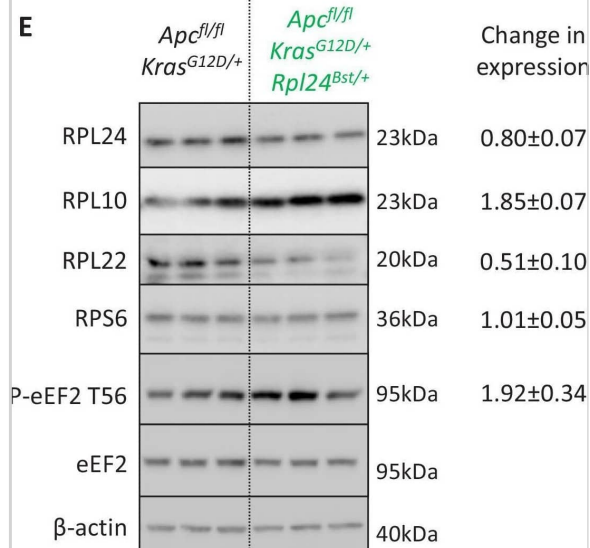
Analysis in human cell line HeLa.



Analysis in mouse cell line NIH-3T3 and rat cell line NBT-II.



The effect of Rpl24Bst mutation on translation and ribosome composition. (A) Representative polysome profiles from *Apcfl/fl* *KrasG12D/+* or *Apcfl/fl* *KrasG12D/+* *Rpl24Bst/+* small intestinal organoid cultures, pre-treated with harringtonine for 5 min/300 s (H300) or untreated (H0). These traces were analysed for the run-off rates shown in Figure 3E. (B) Representative polysome profiles from *Apcfl/+* *KrasG12D/+* or *Apcfl/+* *KrasG12D/+* *Rpl24Bst/+* colonic adenoma cultures (left) and quantification of the polysome to subpolysome ratio from these (right). Two biologically independent lines were analysed per genotype and plotted  $\pm$  standard error of the mean (SEM). Scheme above denotes the generation of adenoma cultures from distinct colonic tumours in aged VillinCreER *Apcfl/+* *KrasG12D/+* and VillinCreER *Apcfl/+* *KrasG12D/+* *Rpl24Bst/+* mice. (C) Relative protein synthesis rates quantified by <sup>35</sup>S-methionine incorporation in the colonic adenoma cultures described in (B) with  $n = 3$ . The average protein synthesis rates were plotted relative to *Apcfl/+* *KrasG12D/+* controls (=1) for three organoid lines per genotype  $\pm$  SEM. Significance was determined by Mann–Whitney U test. (D) 60S to 40S ratio from sucrose density gradients from lysates generated from the indicated genotypes. Data show the mean  $\pm$  SEM. Representative traces are shown in Figure 3B and Figure 4—figure supplement 2B. (E) Western blotting from protein lysates generated from three biologically independent organoid lines for each genotype. Mean values for RPL24, RPL10, RPL22, and RPS6 expression relative to  $\beta$ -actin and P-eEF2 T56 relative to eEF2 are shown next to the relevant blot  $\pm$  SEM. The average of the VillinCreER *Apcfl/+* *KrasG12D/+* lanes in all cases has been set to 1. Image collected and cropped by CiteAb from the following open publication (<https://elifesciences.org/articles/69729>), licensed under a CC-BY license. Not internally tested by Novus Biologicals.



## Publications

Knight JR, Vlahov N, Gay DM et al. Rpl24Bst mutation suppresses colorectal cancer by promoting eEF2 phosphorylation via eEF2K eLife 2021-12-13 [PMID: 34895463] (WB, Mouse)

Shih YT, Huang TN, Hu HT et al. Vcp Overexpression and Leucine Supplementation Increase Protein Synthesis and Improve Fear Memory and Social Interaction of Nf1 Mutant Mice Cell Rep 2020-06-30 [PMID: 32610136]

Jiang L, Li T, Zhang X et al. RPL10L Is Required for Male Meiotic Division by Compensating for RPL10 during Meiotic Sex Chromosome Inactivation in Mice. Curr. Biol. 2017-05-22 [PMID: 28502657]



### Novus Biologicals USA

10730 E. Briarwood Avenue  
Centennial, CO 80112  
USA  
Phone: 303.730.1950  
Toll Free: 1.888.506.6887  
Fax: 303.730.1966  
nb-customerservice@bio-techne.com

### Bio-Techne Canada

21 Canmotor Ave  
Toronto, ON M8Z 4E6  
Canada  
Phone: 905.827.6400  
Toll Free: 855.668.8722  
Fax: 905.827.6402  
canada.inquires@bio-techne.com

### Bio-Techne Ltd

19 Barton Lane  
Abingdon Science Park  
Abingdon, OX14 3NB, United Kingdom  
Phone: (44) (0) 1235 529449  
Free Phone: 0800 37 34 15  
Fax: (44) (0) 1235 533420  
info.EMEA@bio-techne.com

### General Contact Information

www.novusbio.com  
Technical Support: nb-technical@bio-techne.com  
Orders: nb-customerservice@bio-techne.com  
General: novus@novusbio.com

### Products Related to NBP1-84037

---

NBP1-84037PEP	RPL10 Recombinant Protein Antigen
NBP2-33376H	Blue Marker Antibody (6F4-F6) [HRP]
HAF008	Goat anti-Rabbit IgG Secondary Antibody [HRP]
NB7160	Goat anti-Rabbit IgG (H+L) Secondary Antibody [HRP]
NBP2-24891	Rabbit IgG Isotype Control

---

### Limitations

This product is for research use only and is not approved for use in humans or in clinical diagnosis. Primary Antibodies are guaranteed for 1 year from date of receipt.

For more information on our 100% guarantee, please visit [www.novusbio.com/guarantee](http://www.novusbio.com/guarantee)

Earn gift cards/discounts by submitting a review: [www.novusbio.com/reviews/submit/NBP1-84037](http://www.novusbio.com/reviews/submit/NBP1-84037)

Earn gift cards/discounts by submitting a publication using this product:  
[www.novusbio.com/publications](http://www.novusbio.com/publications)

