

Product Datasheet

GCC1 Antibody - BSA Free NBP1-83609

Unit Size: 0.1 ml

Store at 4C short term. Aliquot and store at -20C long term. Avoid freeze-thaw cycles.

www.novusbio.com



technical@novusbio.com

Reviews: 1 Publications: 1

Protocols, Publications, Related Products, Reviews, Research Tools and Images at:
www.novusbio.com/NBP1-83609

Updated 12/2/2025 v.20.1

**Earn rewards for product
reviews and publications.**

Submit a publication at www.novusbio.com/publications

Submit a review at www.novusbio.com/reviews/destination/NBP1-83609



NBP1-83609

GCC1 Antibody - BSA Free

| Product Information | |
|----------------------|------------------------------------------------------------------------------------------------------------------|
| Unit Size | 0.1 ml |
| Concentration | Concentrations vary lot to lot. See vial label for concentration. If unlisted please contact technical services. |
| Storage | Store at 4C short term. Aliquot and store at -20C long term. Avoid freeze-thaw cycles. |
| Clonality | Polyclonal |
| Preservative | 0.02% Sodium Azide |
| Isotype | IgG |
| Purity | Affinity purified |
| Buffer | PBS (pH 7.2) and 40% Glycerol |

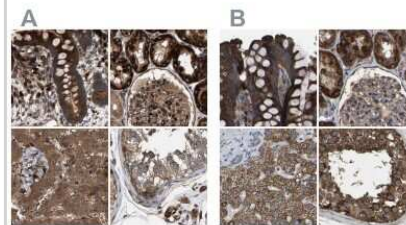
| Product Description | |
|-------------------------|--------------------------------------------------------------------------------------------------------------------------------------------------------------------------------------------------------------------------------------------------|
| Description | Novus Biologicals Rabbit GCC1 Antibody - BSA Free (NBP1-83609) is a polyclonal antibody validated for use in IHC, WB and ICC/IF. Anti-GCC1 Antibody: Cited in 1 publication. All Novus Biologicals antibodies are covered by our 100% guarantee. |
| Host | Rabbit |
| Gene ID | 79571 |
| Gene Symbol | GCC1 |
| Species | Human, Mouse, Rat, Canine |
| Reactivity Notes | Canine reactivity reported by a customer review |
| Immunogen | This antibody was developed against Recombinant Protein corresponding to amino acids: GDPADTSSDSLTLQALQLAAANEPTFFLYAEQLARKEVEITSLRKQKHRLEVEV HQLQDRLLLEGERHREEVAALQSHIEKNIRDQSREGANLEYLKNIIYRFLTLPDS LGRQQTLTAILTILHFSPEEKQVIMRLPT |

| Product Application Details | |
|------------------------------|-------------------------------------------------------------------------------------------------------------------------------------------------------------------------------------|
| Applications | Western Blot, Immunohistochemistry-Paraffin, Immunocytochemistry/ Immunofluorescence, Immunohistochemistry, Knockdown Validated |
| Recommended Dilutions | Western Blot 0.04-0.4 ug/ml, Immunohistochemistry 1:20 - 1:50, Immunocytochemistry/ Immunofluorescence 0.25-2 ug/ml, Immunohistochemistry-Paraffin 1:20 - 1:50, Knockdown Validated |
| Application Notes | For IHC-Paraffin, HIER pH 6 retrieval is recommended. ICC/IF Fixation Permeabilization: Use PFA/Triton X-100. |

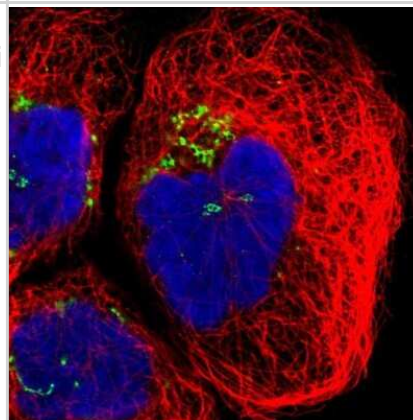


Images

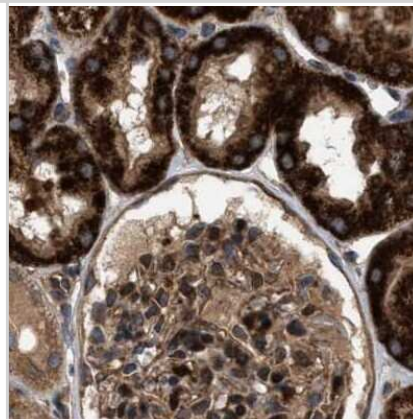
Immunohistochemistry-Paraffin: GCC1 Antibody [NBP1-83609] - Staining of human colon, kidney, liver and testis using Anti-GCC1 antibody NBP1-83609 (A) shows similar protein distribution across tissues to independent antibody NBP1-83610 (B).



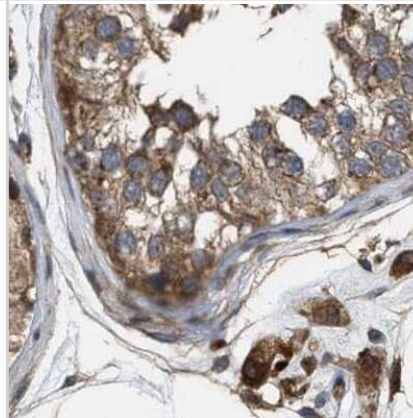
Immunocytochemistry/Immunofluorescence: GCC1 Antibody [NBP1-83609] - Staining of human cell line A-431 shows localization to the Golgi apparatus. Antibody staining is shown in green.



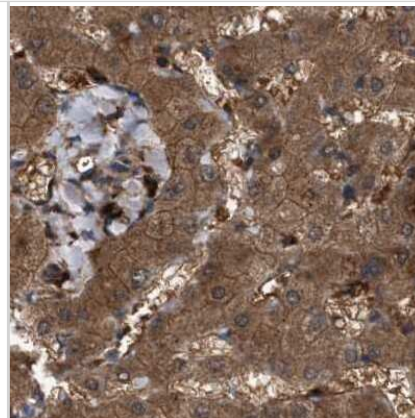
Immunohistochemistry-Paraffin: GCC1 Antibody [NBP1-83609] - Staining of human kidney.



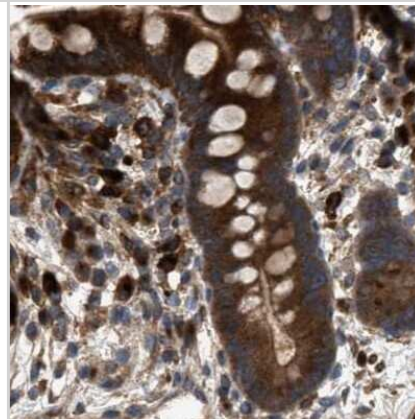
Immunohistochemistry-Paraffin: GCC1 Antibody [NBP1-83609] - Staining of human testis.



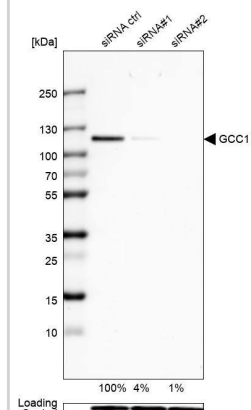
Immunohistochemistry-Paraffin: GCC1 Antibody [NBP1-83609] - Staining of human liver.



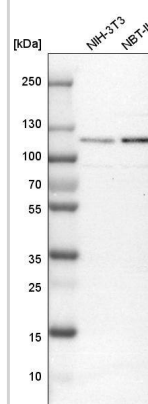
Immunohistochemistry-Paraffin: GCC1 Antibody [NBP1-83609] - Staining of human colon.



Analysis in U-138MG cells) transfected with control siRNA, target specific siRNA probe #1 and #2, using Anti-GCC1 antibody. Remaining relative intensity is presented. Loading control: Anti-GAPDH.



Analysis in mouse cell line NIH-3T3 and rat cell line NBT-II.



Publications

Wong M, Munro S. The specificity of vesicle traffic to the Golgi is encoded in the golgin coiled-coil proteins. Science 2014-10-31 [PMID: 25359980] (ICC/IF, Human)



Novus Biologicals USA

10730 E. Briarwood Avenue
Centennial, CO 80112
USA
Phone: 303.730.1950
Toll Free: 1.888.506.6887
Fax: 303.730.1966
nb-customerservice@bio-techne.com

Bio-Techne Canada

21 Canmotor Ave
Toronto, ON M8Z 4E6
Canada
Phone: 905.827.6400
Toll Free: 855.668.8722
Fax: 905.827.6402
canada.inquires@bio-techne.com

Bio-Techne Ltd

19 Barton Lane
Abingdon Science Park
Abingdon, OX14 3NB, United Kingdom
Phone: (44) (0) 1235 529449
Free Phone: 0800 37 34 15
Fax: (44) (0) 1235 533420
info.EMEA@bio-techne.com

General Contact Information

www.novusbio.com
Technical Support: nb-technical@bio-techne.com
Orders: nb-customerservice@bio-techne.com
General: novus@novusbio.com

Products Related to NBP1-83609

| | |
|---------------|-----------------------------------------------------|
| NBP1-83609PEP | GCC1 Recombinant Protein Antigen |
| NBP2-33376H | Blue Marker Antibody (6F4-F6) [HRP] |
| HAF008 | Goat anti-Rabbit IgG Secondary Antibody [HRP] |
| NB7160 | Goat anti-Rabbit IgG (H+L) Secondary Antibody [HRP] |
| NBP2-24891 | Rabbit IgG Isotype Control |

Limitations

This product is for research use only and is not approved for use in humans or in clinical diagnosis. Primary Antibodies are guaranteed for 1 year from date of receipt.

For more information on our 100% guarantee, please visit www.novusbio.com/guarantee

Earn gift cards/discounts by submitting a review: www.novusbio.com/reviews/submit/NBP1-83609

Earn gift cards/discounts by submitting a publication using this product:
www.novusbio.com/publications

