

Product Datasheet

Integrin beta-like protein 1 Antibody - BSA Free NBP1-82473

Unit Size: 0.1 ml

Store at 4C short term. Aliquot and store at -20C long term. Avoid freeze-thaw cycles.

www.novusbio.com



technical@novusbio.com

Publications: 1

Protocols, Publications, Related Products, Reviews, Research Tools and Images at:
www.novusbio.com/NBP1-82473

Updated 1/5/2026 v.20.1

Earn rewards for product
reviews and publications.

Submit a publication at www.novusbio.com/publications

Submit a review at www.novusbio.com/reviews/destination/NBP1-82473



NBP1-82473**Integrin beta-like protein 1 Antibody - BSA Free**

Product Information	
Unit Size	0.1 ml
Concentration	Concentrations vary lot to lot. See vial label for concentration. If unlisted please contact technical services.
Storage	Store at 4C short term. Aliquot and store at -20C long term. Avoid freeze-thaw cycles.
Clonality	Polyclonal
Preservative	0.02% Sodium Azide
Isotype	IgG
Purity	Affinity purified
Buffer	PBS (pH 7.2) and 40% Glycerol

Product Description	
Description	Novus Biologicals Rabbit Integrin beta-like protein 1 Antibody - BSA Free (NBP1-82473) is a polyclonal antibody validated for use in IHC and WB. Anti-Integrin beta-like protein 1 Antibody: Cited in 1 publication. All Novus Biologicals antibodies are covered by our 100% guarantee.
Host	Rabbit
Gene ID	9358
Gene Symbol	ITGBL1
Species	Human
Immunogen	This antibody was developed against Recombinant Protein corresponding to amino acids: VCGECTCHDVDPTGDWGDHGDTCCECDERDCRAVYDRYSDDFCSGHGQCN CGRCDCKAGWYGKKCEHPQSCTLSAEESIRKCKQGSSDLPCSGRGKCECGKC TCYPPGDRRVYGKTCECDDRRCEDLDGV

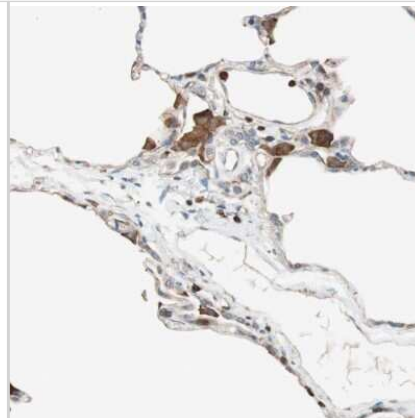
Product Application Details	
Applications	Immunohistochemistry-Paraffin, Immunohistochemistry
Recommended Dilutions	Immunohistochemistry 1:200 - 1:500, Immunohistochemistry-Paraffin 1:200 - 1:500
Application Notes	IHC-Paraffin, HIER pH 6 retrieval is recommended.

Images

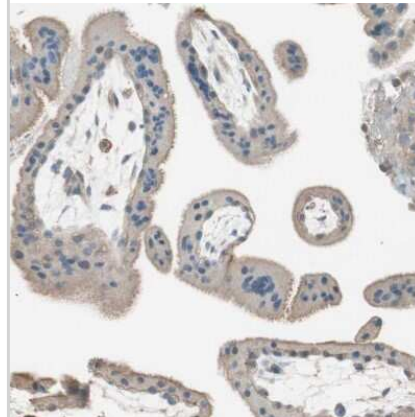
Immunohistochemistry-Paraffin: Integrin beta-like protein 1 Antibody [NBP1-82473] - Staining of human colorectal cancer shows moderate positivity.



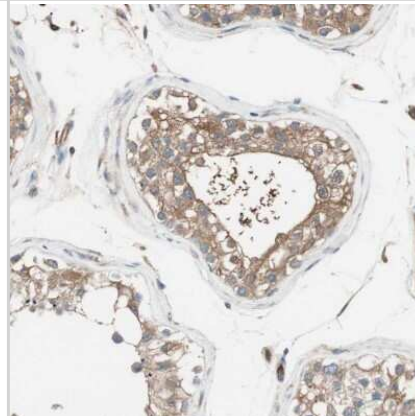
Immunohistochemistry-Paraffin: Integrin beta-like protein 1 Antibody [NBP1-82473] - Staining of human lung shows strong cytoplasmic positivity in macrophages.



Immunohistochemistry-Paraffin: Integrin beta-like protein 1 Antibody [NBP1-82473] - Staining of human placenta shows moderate cytoplasmic positivity in trophoblastic cells.

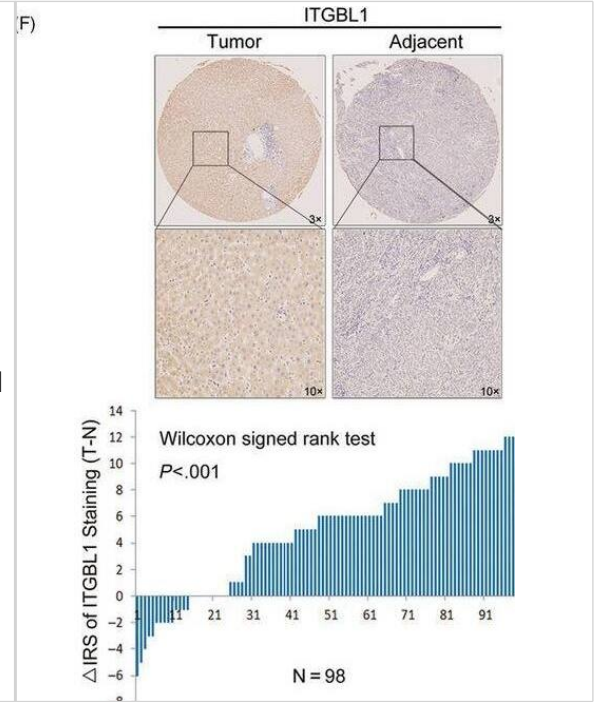


Immunohistochemistry-Paraffin: Integrin beta-like protein 1 Antibody [NBP1-82473] - Staining of human testis shows moderate cytoplasmic positivity in cells in seminiferous ducts.



ITGBL1 expression is upregulated in HCC tissues and associated with the prognosis of HCC patients. A, ITGBL1 expression in the normal liver tissues (n = 50) and primary liver tumour tissues (n = 371), as revealed by the TCGA HCC data set (P < .001). B, ITGBL1 expression in the normal liver (n = 19) and HCC tissues (n = 47), as revealed by the Oncomine database (GSE14323; P < .001). C, Different ITGBL1 mRNA expression levels in 22 paired samples of HCC tumour tissues and adjacent non-cancerous tissues, as determined by RT-PCR analyses (P = .0057). D, Western blotting analyses of the ITGBL1 protein expression levels in eight randomly selected tumour tissues and the matched adjacent non-tumour tissues from HCC patients; GAPDH was used as the internal loading control. E, Greyscale analysis of the ITGBL1 expression level, compared to the GAPDH expression level, in the eight patients (P < .001). T, tumour tissue; N, normal tissue. F, Immunohistochemistry staining of ITGBL1 in the TMAs with HCC tissues and adjacent non-cancerous tissues (n = 98; P < .001). G, The Kaplan-Meier plot for the overall survival of HCC patients according to ITGBL1 expression levels (higher vs lower, log-rank test, P = .014)

Image collected and cropped by CiteAb from the following open publication (<https://pubmed.ncbi.nlm.nih.gov/32537856>), licensed under a CC-BY license. Not internally tested by Novus Biologicals.



Publications

Huang, W, Yu, D Et al. ITGBL1 promotes cell migration and invasion through stimulating the TGF- beta signalling pathway in hepatocellular carcinoma. Cell Prolif 2020-07-01 [PMID: 32537856] (WB, Mouse)



Novus Biologicals USA

10730 E. Briarwood Avenue
Centennial, CO 80112
USA
Phone: 303.730.1950
Toll Free: 1.888.506.6887
Fax: 303.730.1966
nb-customerservice@bio-techne.com

Bio-Techne Canada

21 Canmotor Ave
Toronto, ON M8Z 4E6
Canada
Phone: 905.827.6400
Toll Free: 855.668.8722
Fax: 905.827.6402
canada.inquires@bio-techne.com

Bio-Techne Ltd

19 Barton Lane
Abingdon Science Park
Abingdon, OX14 3NB, United Kingdom
Phone: (44) (0) 1235 529449
Free Phone: 0800 37 34 15
Fax: (44) (0) 1235 533420
info.EMEA@bio-techne.com

General Contact Information

www.novusbio.com
Technical Support: nb-technical@bio-techne.com
Orders: nb-customerservice@bio-techne.com
General: novus@novusbio.com

Products Related to NBP1-82473

NBP1-82473PEP	Integrin beta-like protein 1 Recombinant Protein Antigen
HAF008	Goat anti-Rabbit IgG Secondary Antibody [HRP]
NB7160	Goat anti-Rabbit IgG (H+L) Secondary Antibody [HRP]
NBP2-24891	Rabbit IgG Isotype Control

Limitations

This product is for research use only and is not approved for use in humans or in clinical diagnosis. Primary Antibodies are guaranteed for 1 year from date of receipt.

For more information on our 100% guarantee, please visit www.novusbio.com/guarantee

Earn gift cards/discounts by submitting a review: www.novusbio.com/reviews/submit/NBP1-82473

Earn gift cards/discounts by submitting a publication using this product:
www.novusbio.com/publications

