

Product Datasheet

CREM Antibody - BSA Free

NBP1-81760

Unit Size: 0.1 ml

Store at 4C short term. Aliquot and store at -20C long term. Avoid freeze-thaw cycles.

www.novusbio.com



technical@novusbio.com

Protocols, Publications, Related Products, Reviews, Research Tools and Images at:
www.novusbio.com/NBP1-81760

Updated 12/2/2025 v.20.1

Earn rewards for product
reviews and publications.

Submit a publication at www.novusbio.com/publications

Submit a review at www.novusbio.com/reviews/destination/NBP1-81760



NBP1-81760

CREM Antibody - BSA Free

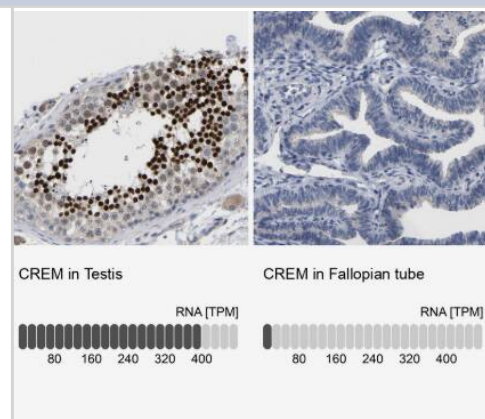
Product Information	
Unit Size	0.1 ml
Concentration	Concentrations vary lot to lot. See vial label for concentration. If unlisted please contact technical services.
Storage	Store at 4C short term. Aliquot and store at -20C long term. Avoid freeze-thaw cycles.
Clonality	Polyclonal
Preservative	0.02% Sodium Azide
Isotype	IgG
Purity	Affinity purified
Buffer	PBS (pH 7.2) and 40% Glycerol

Product Description	
Description	Novus Biologicals Rabbit CREM Antibody - BSA Free (NBP1-81760) is a polyclonal antibody validated for use in IHC and WB. All Novus Biologicals antibodies are covered by our 100% guarantee.
Host	Rabbit
Gene ID	1390
Gene Symbol	CREM
Species	Human, Mouse, Rat
Immunogen	This antibody was developed against Recombinant Protein corresponding to amino acids: QHDGSITASLTESKSAHVQTQTGQNSIPALAQVAAIAETDESAESEGVIDSHKR REILSRPSPYRKILNELSSDVPGVPKIEEERSEEEGTPPSIATMAVPTSIYQTSTG QYIAIAQGGTIQISNPGSD

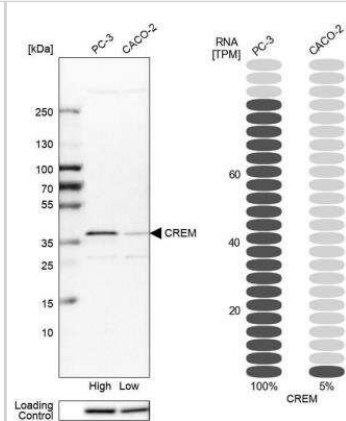
Product Application Details	
Applications	Western Blot, Immunohistochemistry-Paraffin, Immunohistochemistry, Chromatin Immunoprecipitation-exo-Seq
Recommended Dilutions	Western Blot 0.04-0.4 ug/ml, Immunohistochemistry 1:500 - 1:1000, Immunohistochemistry-Paraffin 1:500 -1:1000, Chromatin Immunoprecipitation-exo-Seq 1-10ug per reaction
Application Notes	For IHC-Paraffin, HIER pH 6 retrieval is recommended.

Images

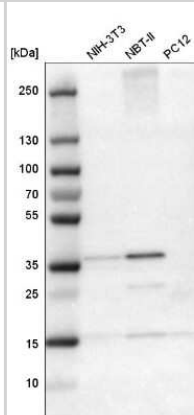
Immunohistochemistry-Paraffin: CREM Antibody [NBP1-81760] - Analysis in human testis and fallopian tube tissues using NBP1-81760 antibody. Corresponding CREM RNA-seq data are presented for the same tissues.



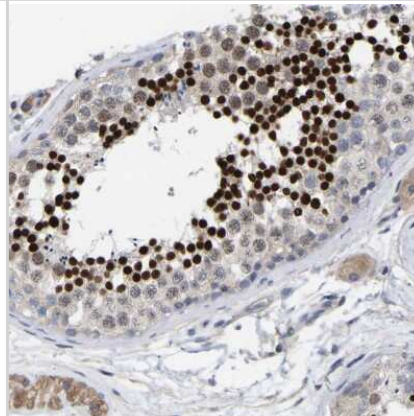
Western Blot: CREM Antibody [NBP1-81760] - Analysis in human cell lines PC-3 and Caco-2 using Anti-CREM antibody. Corresponding CREM RNA-seq data are presented for the same cell lines. Loading control: Anti-COX4I1.



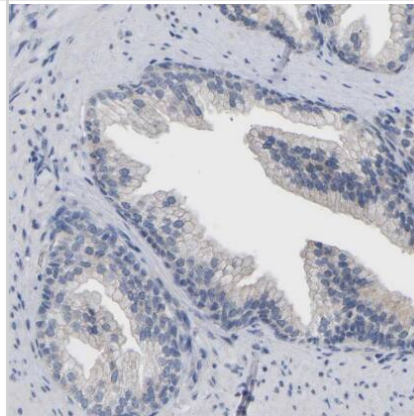
Western Blot: CREM Antibody [NBP1-81760] - Analysis in mouse cell line NIH-3T3, rat cell line NBT-II and rat cell line pC12.



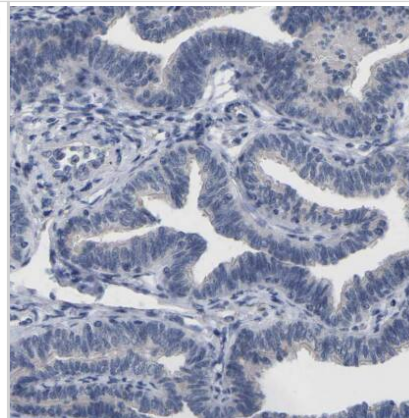
Immunohistochemistry-Paraffin: CREM Antibody [NBP1-81760] - Staining of human testis shows high expression.



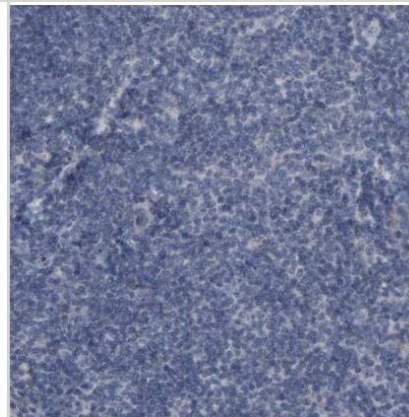
Immunohistochemistry-Paraffin: CREM Antibody [NBP1-81760] - Staining of human prostate shows no nuclear positivity in glandular cells as expected.



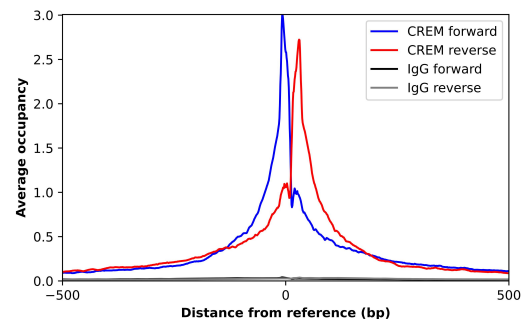
Immunohistochemistry-Paraffin: CREM Antibody [NBP1-81760] -Staining of human fallopian tube shows no nuclear positivity in glandular cells as expected.



Immunohistochemistry-Paraffin: CREM Antibody [NBP1-81760] -Staining of human tonsil shows no nuclear positivity in non-germinal center cells as expected.



ChIP-Exo-Seq composite graph for Anti-CREM (NBP1-81760) tested in K562 cells. Strand-specific reads (blue: forward, red: reverse) and IgG controls (black: forward, grey: reverse) are plotted against the distance from a composite set of reference binding sites. The antibody exhibits robust target enrichment compared to a non-specific IgG control and precisely reveals its structural organization around the binding site. Data generated by Prof. B. F. Pugh's Lab at Cornell University.





Novus Biologicals USA

10730 E. Briarwood Avenue
Centennial, CO 80112
USA
Phone: 303.730.1950
Toll Free: 1.888.506.6887
Fax: 303.730.1966
nb-customerservice@bio-techne.com

Bio-Techne Canada

21 Canmotor Ave
Toronto, ON M8Z 4E6
Canada
Phone: 905.827.6400
Toll Free: 855.668.8722
Fax: 905.827.6402
canada.inquires@bio-techne.com

Bio-Techne Ltd

19 Barton Lane
Abingdon Science Park
Abingdon, OX14 3NB, United Kingdom
Phone: (44) (0) 1235 529449
Free Phone: 0800 37 34 15
Fax: (44) (0) 1235 533420
info.EMEA@bio-techne.com

General Contact Information

www.novusbio.com
Technical Support: nb-technical@bio-techne.com
Orders: nb-customerservice@bio-techne.com
General: novus@novusbio.com

Products Related to NBP1-81760

NBP1-81760PEP	CREM Recombinant Protein Antigen
NBP2-33376H	Blue Marker Antibody (6F4-F6) [HRP]
HAF008	Goat anti-Rabbit IgG Secondary Antibody [HRP]
NB7160	Goat anti-Rabbit IgG (H+L) Secondary Antibody [HRP]
NBP2-24891	Rabbit IgG Isotype Control

Limitations

This product is for research use only and is not approved for use in humans or in clinical diagnosis. Primary Antibodies are guaranteed for 1 year from date of receipt.

For more information on our 100% guarantee, please visit www.novusbio.com/guarantee

Earn gift cards/discounts by submitting a review: www.novusbio.com/reviews/submit/NBP1-81760

Earn gift cards/discounts by submitting a publication using this product:
www.novusbio.com/publications

