

Product Datasheet

MafB Antibody - BSA Free NBP1-81342

Unit Size: 0.1 ml

Store at 4C short term. Aliquot and store at -20C long term. Avoid freeze-thaw cycles.

www.novusbio.com



technical@novusbio.com

Reviews: 1 Publications: 7

Protocols, Publications, Related Products, Reviews, Research Tools and Images at:
www.novusbio.com/NBP1-81342

Updated 2/22/2026 v.20.1

**Earn rewards for product
reviews and publications.**

Submit a publication at www.novusbio.com/publications

Submit a review at www.novusbio.com/reviews/destination/NBP1-81342



NBP1-81342

MafB Antibody - BSA Free

Product Information	
Unit Size	0.1 ml
Concentration	Concentrations vary lot to lot. See vial label for concentration. If unlisted please contact technical services.
Storage	Store at 4C short term. Aliquot and store at -20C long term. Avoid freeze-thaw cycles.
Clonality	Polyclonal
Preservative	0.02% Sodium Azide
Isotype	IgG
Purity	Affinity purified
Buffer	PBS (pH 7.2) and 40% Glycerol

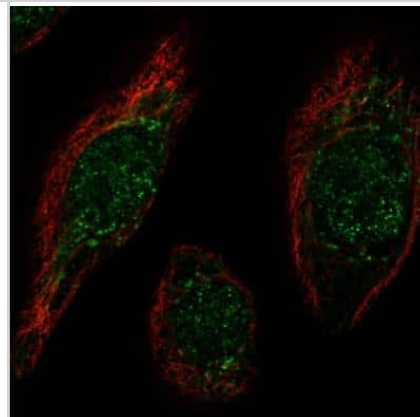
Product Description	
Description	Novus Biologicals Rabbit MafB Antibody - BSA Free (NBP1-81342) is a polyclonal antibody validated for use in IHC, WB and ICC/IF. Anti-MafB Antibody: Cited in 5 publications. All Novus Biologicals antibodies are covered by our 100% guarantee.
Host	Rabbit
Gene ID	9935
Gene Symbol	MAFB
Species	Human, Mouse
Reactivity Notes	Mouse reactivity reported in scientific literature (PMID: 25053437).
Immunogen	This antibody was developed against Recombinant Protein corresponding to amino acids: MEYVNDFDLLKFDVKKEPLGRAERPGRPCTRLQPAGSVSSTPLSTPCSSVPSS PSFSPTEQKTHLEDLYWMASNYQQMNPEALNLTPEDAVEALIGSHVPQPLQS FDSFRGAHHHHHHHHHPH

Product Application Details	
Applications	Western Blot, Immunohistochemistry-Paraffin, Immunocytochemistry/ Immunofluorescence, Immunohistochemistry, Chromatin Immunoprecipitation-exo-Seq
Recommended Dilutions	Western Blot Validated from a verified customer review, Immunohistochemistry 1:200 - 1:500, Immunocytochemistry/ Immunofluorescence 0.25-2 ug/ml, Immunohistochemistry-Paraffin 1:200 - 1:500, Chromatin Immunoprecipitation-exo-Seq 1-10ug per reaction
Application Notes	IHC-Paraffin, HIER pH 6 retrieval is recommended. ICC/IF, Fixation Permeabilization, Use PFA/Triton X-100.

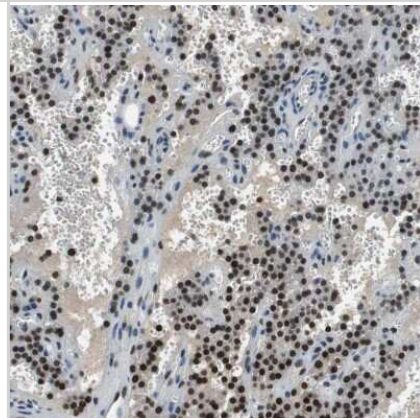


Images

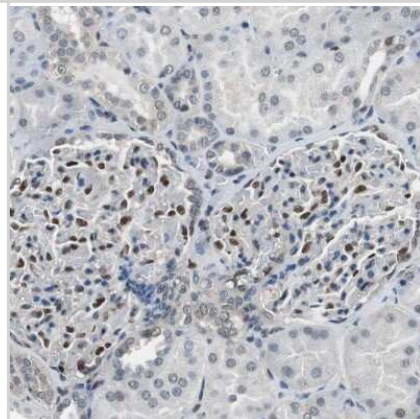
Immunocytochemistry/Immunofluorescence: MafB Antibody [NBP1-81342] - Staining of human cell line hTCEpi shows localization to nucleus & the Golgi apparatus. Antibody staining is shown in green.



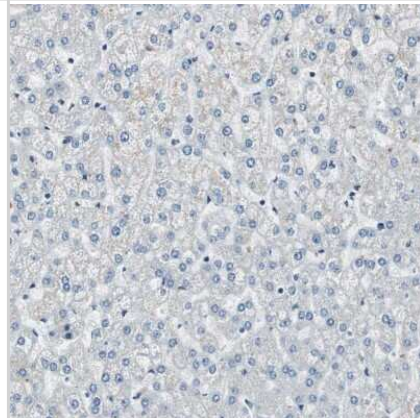
Immunohistochemistry-Paraffin: MafB Antibody [NBP1-81342] - Staining of human parathyroid gland shows moderate to strong nuclear positivity in glandular cells.



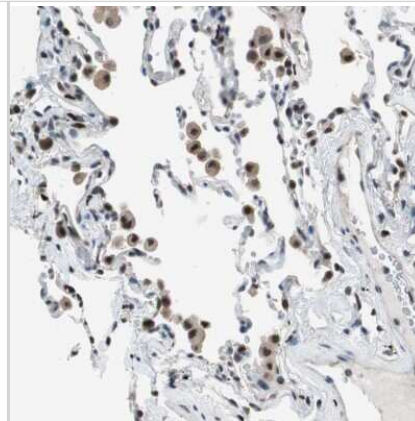
Immunohistochemistry-Paraffin: MafB Antibody [NBP1-81342] - Staining of human kidney shows moderate to strong nuclear positivity in podocytes.



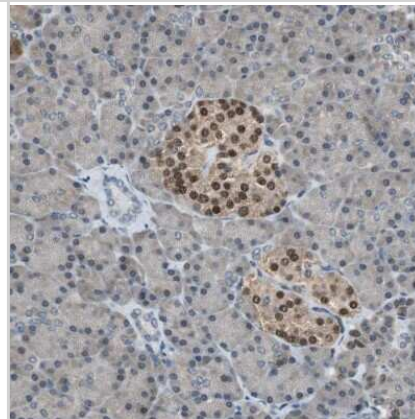
Immunohistochemistry-Paraffin: MafB Antibody [NBP1-81342] - Staining of human liver shows no positivity in hepatocytes as expected.



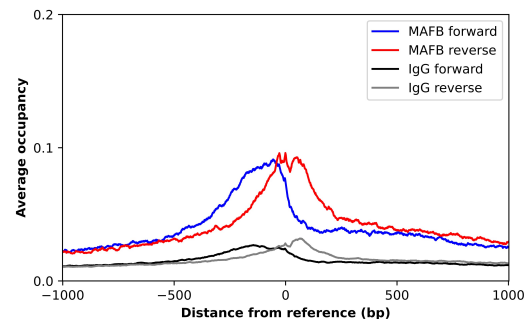
Immunohistochemistry-Paraffin: MafB Antibody [NBP1-81342] - Staining of human lung shows moderate to strong nuclear positivity in macrophages.



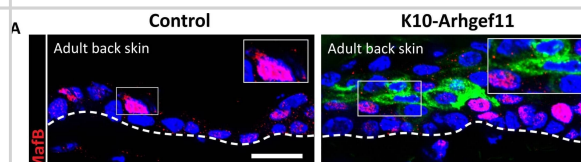
Immunohistochemistry-Paraffin: MafB Antibody [NBP1-81342] - Staining of human pancreas shows moderate to strong nuclear positivity in islets of Langerhans.



ChIP-Exo-Seq composite graph for Anti-MAFB (NBP1-81342) tested in K562 cells. Strand-specific reads (blue: forward, red: reverse) and IgG controls (black: forward, grey: reverse) are plotted against the distance from a composite set of reference binding sites. The antibody exhibits robust target enrichment compared to a non-specific IgG control and precisely reveals its structural organization around the binding site. Data generated by Prof. B. F. Pugh's Lab at Cornell University.



Increased contractility in spinous cells of adult epidermis induces some granular markers in adult epidermis. (A and B) Immunofluorescence staining of MafB in back skin (A) or glabrous skin (B) in red, and suprabasal cells expressing Arhgef11CA marked by HA (green) in adult K10-Arhgef11 and controls. Mice were fed with doxycycline since adulthood. Insets show close-ups of HA+ cells in suprabasal layers adjacent to basal cells. Scale bars: 20 μ m. (C and D) Immunofluorescence staining of Tgm1 in back skin (C) or glabrous skin (D) in red, and suprabasal cells expressing Arhgef11CA marked by HA (green) in adult K10-Arhgef11 and controls. Insets show close-ups of HA+ cells in suprabasal layers adjacent to basal cells. Mice were fed with doxycycline since adulthood. Scale bars: 20 μ m. Image collected and cropped by CiteAb from the following open publication (<https://pubmed.ncbi.nlm.nih.gov/40772711>), licensed under a CC-BY license. Not internally tested by Novus Biologicals.



Publications

Bastille, I;Lee, L;Moncada-Reid, C;Yu, WM;Sitko, A;Yung, A;Zamani, M;Christophersen, N;Maroofian, R;Galehdari, H;Babai, N;Vona, B;Moser, T;Goodrich, L; Combinatorial transcriptional regulation establishes subtype-appropriate synaptic properties in auditory neurons *Cell reports* 2025-06-05 [PMID: 40482032]

Digby Jlm, Vanichapol T, Przepiorski A et Al. Evaluation of cisplatin-induced injury in human kidney organoids *Am. J. Physiol. Renal Physiol.* 2020-04-01 [PMID: 32150447]

Digby JLM, Przepiorski A, Davidson AJ, Sander V Modeling acute kidney injury in kidney organoids with cisplatin *bioRxiv* 2019-12-23 (IHC-P, Human)

Goudot C, Coillard A, Villani A et al. Aryl Hydrocarbon Receptor Controls Monocyte Differentiation into Dendritic Cells versus Macrophages. *Immunity* 2017-09-19 [PMID: 28930664] (WB, Human)

Conrad E, Dai C, Spaeth J et al. The MAFB transcription factor impacts islet a-cell function in rodents and represents a unique signature of primate islet b-cells. *Am. J. Physiol. Endocrinol. Metab.* 2016-01-01 [PMID: 26554594] (IF/IHC, Human)

Brunskill EW, Park JS, Chung E et al. Single cell dissection of early kidney development: multilineage priming. *Development* 2014-08-01 [PMID: 25053437] (IF/IHC, Mouse)

Pasquali L, Gaulton KJ, Rodriguez-Segui SA et al. Pancreatic islet enhancer clusters enriched in type 2 diabetes risk-associated variants. *Nat Genet* 2014-02-01 [PMID: 24413736]





Novus Biologicals USA

10730 E. Briarwood Avenue
Centennial, CO 80112
USA
Phone: 303.730.1950
Toll Free: 1.888.506.6887
Fax: 303.730.1966
nb-customerservice@bio-techne.com

Bio-Techne Canada

21 Canmotor Ave
Toronto, ON M8Z 4E6
Canada
Phone: 905.827.6400
Toll Free: 855.668.8722
Fax: 905.827.6402
canada.inquires@bio-techne.com

Bio-Techne Ltd

19 Barton Lane
Abingdon Science Park
Abingdon, OX14 3NB, United Kingdom
Phone: (44) (0) 1235 529449
Free Phone: 0800 37 34 15
Fax: (44) (0) 1235 533420
info.EMEA@bio-techne.com

General Contact Information

www.novusbio.com
Technical Support: nb-technical@bio-techne.com
Orders: nb-customerservice@bio-techne.com
General: novus@novusbio.com

Products Related to NBP1-81342

NBP1-81342PEP	MafB Recombinant Protein Antigen
NBP2-33376H	Blue Marker Antibody (6F4-F6) [HRP]
HAF008	Goat anti-Rabbit IgG Secondary Antibody [HRP]
NB7160	Goat anti-Rabbit IgG (H+L) Secondary Antibody [HRP]
NBP2-24891	Rabbit IgG Isotype Control

Limitations

This product is for research use only and is not approved for use in humans or in clinical diagnosis. Primary Antibodies are guaranteed for 1 year from date of receipt.

For more information on our 100% guarantee, please visit www.novusbio.com/guarantee

Earn gift cards/discounts by submitting a review: www.novusbio.com/reviews/submit/NBP1-81342

Earn gift cards/discounts by submitting a publication using this product:
www.novusbio.com/publications

