

Product Datasheet

SLC16A3 Antibody - BSA Free NBP1-81251

Unit Size: 0.1 ml

Store at 4C short term. Aliquot and store at -20C long term. Avoid freeze-thaw cycles.

www.novusbio.com



technical@novusbio.com

Reviews: 1 Publications: 7

Protocols, Publications, Related Products, Reviews, Research Tools and Images at:
www.novusbio.com/NBP1-81251

Updated 3/19/2026 v.20.1

**Earn rewards for product
reviews and publications.**

Submit a publication at www.novusbio.com/publications

Submit a review at www.novusbio.com/reviews/destination/NBP1-81251



NBP1-81251

SLC16A3 Antibody - BSA Free

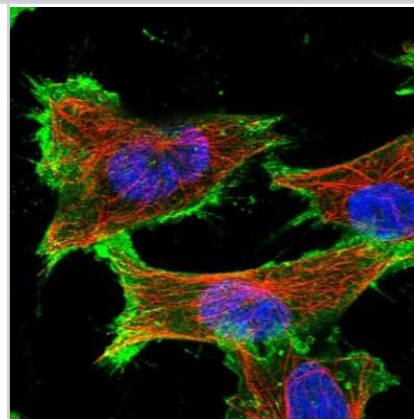
Product Information	
Unit Size	0.1 ml
Concentration	Concentrations vary lot to lot. See vial label for concentration. If unlisted please contact technical services.
Storage	Store at 4C short term. Aliquot and store at -20C long term. Avoid freeze-thaw cycles.
Clonality	Polyclonal
Preservative	0.02% Sodium Azide
Isotype	IgG
Purity	Affinity purified
Buffer	PBS (pH 7.2) and 40% Glycerol

Product Description	
Host	Rabbit
Gene ID	9123
Gene Symbol	SLC16A3
Species	Human
Reactivity Notes	Rat (88%).
Immunogen	This antibody was developed against Recombinant Protein corresponding to amino acids: AEEKHLKPPADSGVDLREVEHFLKAEPEKNGEVVHTPETS

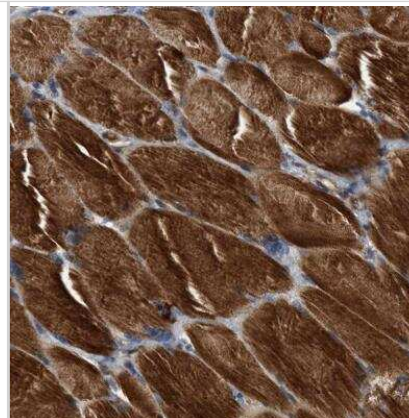
Product Application Details	
Applications	Simple Western, Immunohistochemistry-Paraffin, Immunocytochemistry/Immunofluorescence, Immunohistochemistry
Recommended Dilutions	Simple Western 1:250, Immunohistochemistry 1:200 - 1:500, Immunocytochemistry/ Immunofluorescence 0.25-2 ug/ml, Immunohistochemistry-Paraffin 1:200 - 1:500
Application Notes	For IHC-Paraffin, HIER pH 6 retrieval is recommended. ICC/IF, Fixation Permeabilization: Use PFA/Triton X-100. Simple Western only 10 - 15 uL of the recommended dilution is used per data point. See Simple Western Antibody Database for Simple Western validation: Tested in RT-4 and U-251MG, separated by Size, antibody dilution of 1:250, apparent MW was 53 kDa. Separated by Size-Wes, Sally Sue/Peggy Sue.

Images

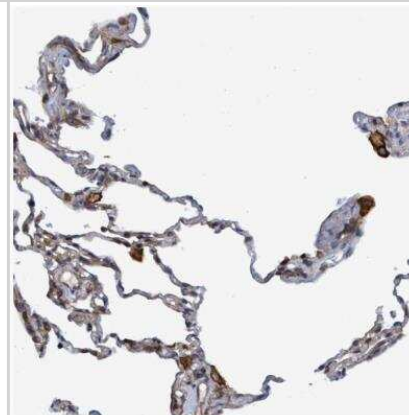
Immunocytochemistry/Immunofluorescence: SLC16A3 Antibody [NBP1-81251] - Staining of human cell line U-251 MG shows localization to plasma membrane. Antibody staining is shown in green.



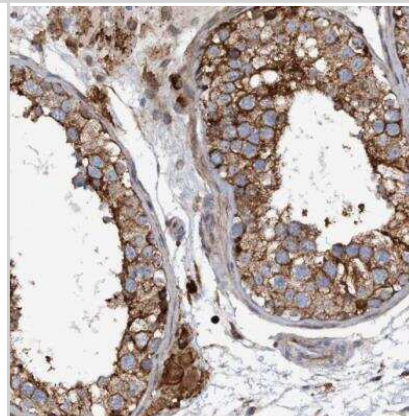
Immunohistochemistry-Paraffin: SLC16A3 Antibody [NBP1-81251] - Staining of human skeletal muscle shows strong cytoplasmic positivity in myocytes.



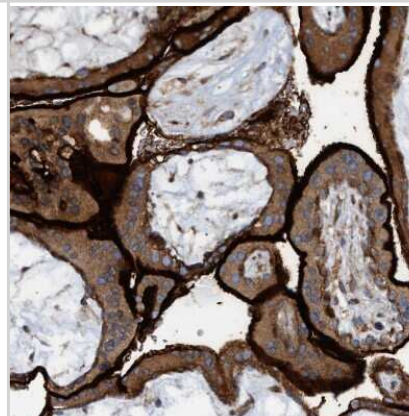
Immunohistochemistry-Paraffin: SLC16A3 Antibody [NBP1-81251] - Staining of human lung shows strong membranous positivity in macrophages.



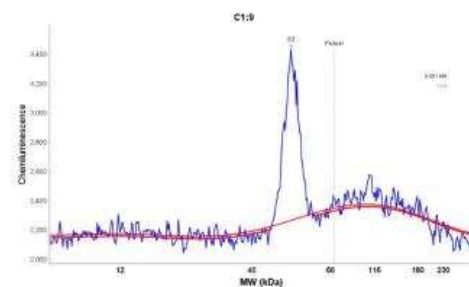
Immunohistochemistry-Paraffin: SLC16A3 Antibody [NBP1-81251] - Staining of human testis shows strong membranous positivity in cells in seminiferous ducts.



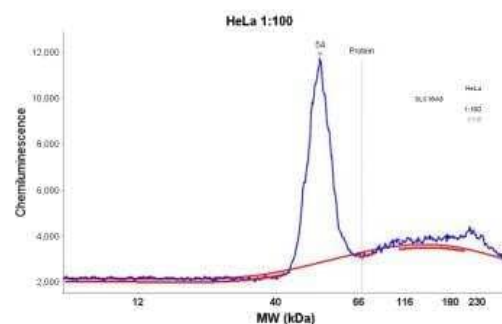
Immunohistochemistry-Paraffin: SLC16A3 Antibody [NBP1-81251] - Staining of human placenta shows strong membranous positivity in trophoblastic cells.



Simple Western: SLC16A3 Antibody [NBP1-81251] - Simple Western: SLC16A3 Antibody [NBP1-81251] - Electropherogram image(s) of corresponding Simple Western lane view. SLC16A3 antibody was used at 1:250 dilution on U-251MG lysates(s)



Simple Western: SLC16A3 Antibody [NBP1-81251] - Simple Western: SLC16A3 Antibody [NBP1-81251] - Electropherogram image(s) of corresponding Simple Western lane view. SLC16A3 antibody was used at 1:250 dilution on HeLa lysates(s).



Publications

Lundquist AJ, Llewellyn GN, Kishi SH, Jakowec NA et al. Knockdown of Astrocytic Monocarboxylate Transporter 4 in the Motor Cortex Leads to Loss of Dendritic Spines and a Deficit in Motor Learning *Mol Neurobiol* 2021-11-25 [PMID: 34822124]

Lai YC, Hsieh CY, Lu KY Et al. Monitoring Early Glycolytic Flux Alterations Following Radiotherapy in Cancer and Immune Cells: Hyperpolarized Carbon-13 Magnetic Resonance Imaging Study *Metabolites* 2021-08-06 [PMID: 34436459] (WB, Human)

Murakami R, Chiba Y, Nishi N et al. Immunoreactivity of receptor and transporters for lactate located in astrocytes and epithelial cells of choroid plexus of human brain *Neurosci Lett* 2020-11-16 [PMID: 33212210] (IF/IHC, WB, ICC/IF, Human)

Details:

Immunofluorescence analysis and immunohistochemical analysis of human brain samples. Western blot analysis performed in HeLa and HT-29.

Lahiguera A, HyroSSovA P, Figueras A et al. Tumors defective in homologous recombination rely on oxidative metabolism: relevance to treatments with PARP inhibitors *EMBO Mol Med* 2020-05-13 [PMID: 32400970] (IHC-P, Mouse)

Iliina Elena I, Armento Angela, Sanchez Leticia Garea et al. Effects of soluble CPE on glioma cell migration are associated with mTOR activation and enhanced glucose flux. *Oncotarget* 2017-06-27 [PMID: 28978054] (IB, Human)

Silagi ES, Schoepflin ZR, Seifert EL et al. Bicarbonate Recycling by HIF-1-dependent Carbonic Anhydrase isoforms 9 and 12 is Critical in Maintaining Intracellular pH and Viability of Nucleus Pulposus Cells *J. Bone Miner. Res.* 2017-09-23 [PMID: 28940640] (Human)

Nijland PG, Michailidou I, Witte ME et al. Cellular distribution of glucose and monocarboxylate transporters in human brain white matter and multiple sclerosis lesions. *Glia* 2014-04-01 [PMID: 24692237] (IHC-Fr, Human)



Novus Biologicals USA

10730 E. Briarwood Avenue
Centennial, CO 80112
USA
Phone: 303.730.1950
Toll Free: 1.888.506.6887
Fax: 303.730.1966
nb-customerservice@bio-techne.com

Bio-Techne Canada

21 Canmotor Ave
Toronto, ON M8Z 4E6
Canada
Phone: 905.827.6400
Toll Free: 855.668.8722
Fax: 905.827.6402
canada.inquires@bio-techne.com

Bio-Techne Ltd

19 Barton Lane
Abingdon Science Park
Abingdon, OX14 3NB, United Kingdom
Phone: (44) (0) 1235 529449
Free Phone: 0800 37 34 15
Fax: (44) (0) 1235 533420
info.EMEA@bio-techne.com

General Contact Information

www.novusbio.com
Technical Support: nb-technical@bio-techne.com
Orders: nb-customerservice@bio-techne.com
General: novus@novusbio.com

Products Related to NBP1-81251

NBP1-81251PEP	SLC16A3 Recombinant Protein Antigen
HAF008	Goat anti-Rabbit IgG Secondary Antibody [HRP]
NB7160	Goat anti-Rabbit IgG (H+L) Secondary Antibody [HRP]
NBP2-24891	Rabbit IgG Isotype Control

Limitations

This product is for research use only and is not approved for use in humans or in clinical diagnosis. Primary Antibodies are guaranteed for 1 year from date of receipt.

For more information on our 100% guarantee, please visit www.novusbio.com/guarantee

Earn gift cards/discounts by submitting a review: www.novusbio.com/reviews/submit/NBP1-81251

Earn gift cards/discounts by submitting a publication using this product:
www.novusbio.com/publications

