

# Product Datasheet

## NKCC2/SLC12A1 Antibody - BSA Free NBP1-80993

Unit Size: 0.1 ml

Store at 4C short term. Aliquot and store at -20C long term. Avoid freeze-thaw cycles.

[www.novusbio.com](http://www.novusbio.com)



[technical@novusbio.com](mailto:technical@novusbio.com)

### Publications: 1

Protocols, Publications, Related Products, Reviews, Research Tools and Images at:  
[www.novusbio.com/NBP1-80993](http://www.novusbio.com/NBP1-80993)

Updated 12/2/2025 v.20.1

Earn rewards for product  
reviews and publications.

Submit a publication at [www.novusbio.com/publications](http://www.novusbio.com/publications)

Submit a review at [www.novusbio.com/reviews/destination/NBP1-80993](http://www.novusbio.com/reviews/destination/NBP1-80993)



**NBP1-80993****NKCC2/SLC12A1 Antibody - BSA Free**

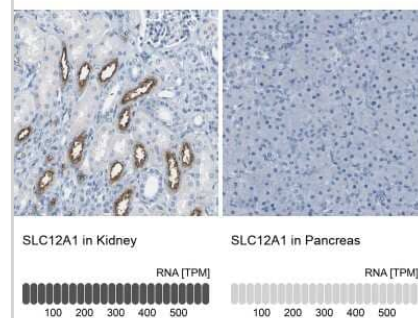
<b>Product Information</b>	
<b>Unit Size</b>	0.1 ml
<b>Concentration</b>	Concentrations vary lot to lot. See vial label for concentration. If unlisted please contact technical services.
<b>Storage</b>	Store at 4C short term. Aliquot and store at -20C long term. Avoid freeze-thaw cycles.
<b>Clonality</b>	Polyclonal
<b>Preservative</b>	0.02% Sodium Azide
<b>Isotype</b>	IgG
<b>Purity</b>	Affinity purified
<b>Buffer</b>	PBS (pH 7.2) and 40% Glycerol

<b>Product Description</b>	
<b>Description</b>	Novus Biologicals Rabbit NKCC2/SLC12A1 Antibody - BSA Free (NBP1-80993) is a polyclonal antibody validated for use in IHC, WB and ICC/IF. Anti-NKCC2/SLC12A1 Antibody: Cited in 1 publication. All Novus Biologicals antibodies are covered by our 100% guarantee.
<b>Host</b>	Rabbit
<b>Gene ID</b>	6557
<b>Gene Symbol</b>	SLC12A1
<b>Species</b>	Human
<b>Reactivity Notes</b>	Immunogen displays the following percentage of sequence identity for non-tested species: Rat (80%)
<b>Immunogen</b>	This antibody was developed against Recombinant Protein corresponding to amino acids: MSLNSSNVFLDSVPSNTNRFQVSVINENHESSAAADDNTDPPHYEETSFGDE AQKRLRISFRPGNQECYDNFLQSGETAKTDASFHAYDSHTNTYYLQTFGHNTM DAVPKIEYYRNTGSI

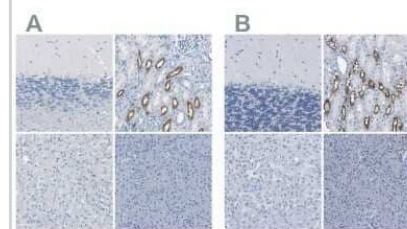
<b>Product Application Details</b>	
<b>Applications</b>	Western Blot, Immunohistochemistry-Paraffin, Immunocytochemistry/Immunofluorescence, Immunohistochemistry
<b>Recommended Dilutions</b>	Western Blot Reported in scientific literature (PMID: 26831905), Immunohistochemistry 1:200 - 1:500, Immunocytochemistry/Immunofluorescence 0.25-2 ug/ml, Immunohistochemistry-Paraffin 1:200 - 1:500
<b>Application Notes</b>	For IHC-Paraffin, HIER pH 6 retrieval is recommended. ICC/IF Fixation/Permeabilization: PFA/Triton X-100.

## Images

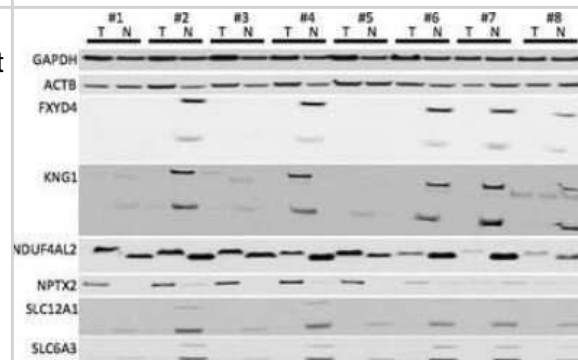
Immunohistochemistry-Paraffin: NKCC2/SLC12A1 Antibody [NBP1-80993] - Analysis in human kidney and pancreas tissues using NBP1-80993 antibody. Corresponding SLC12A1 RNA-seq data are presented for the same tissues.



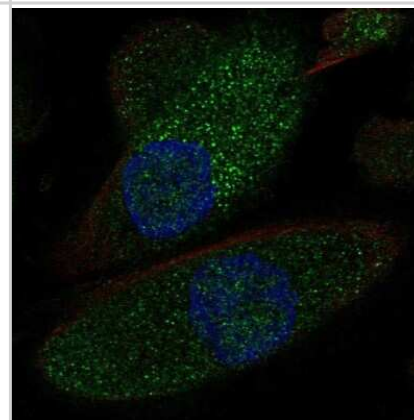
Immunohistochemistry-Paraffin: NKCC2/SLC12A1 Antibody [NBP1-80993] - Staining of human cerebellum, kidney, liver and pancreas using Anti-SLC12A1 antibody NBP1-80993 (A) shows similar protein distribution across tissues to independent antibody NBP1-82559 (B).



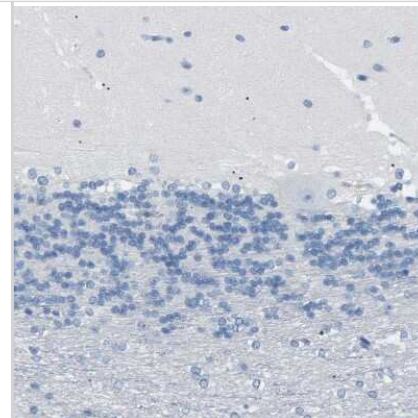
Western Blot: NKCC2/SLC12A1 Antibody [NBP1-80993] - Western blot experiments were performed to determine the protein expression in eight corresponding normal (N) and clear cell renal cell carcinoma (T) tissue. NPTX2 was increased in tumor tissue, whereas FXYD4, KNG1, SLC12A1 and SLC6A3 were decreased in tumors. NDUF4AL2 levels were similar, but the bands were of different size in tumor and normal samples. Image collected and cropped by CiteAb from the following publication (<https://molecular-cancer.biomedcentral.com/articles/10.1186/s12943-016-0495-5>), licensed under a CC-BY license.



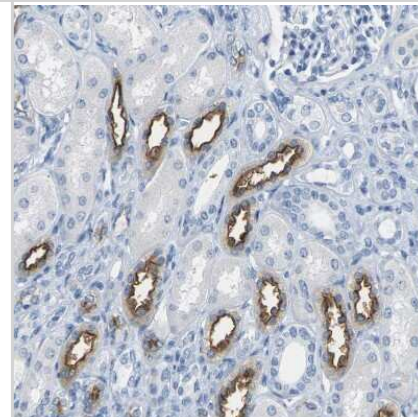
Immunocytochemistry/Immunofluorescence: NKCC2/SLC12A1 Antibody [NBP1-80993] - Staining of human cell line RPTEC TERT1 shows localization to nucleus & vesicles. Antibody staining is shown in green.



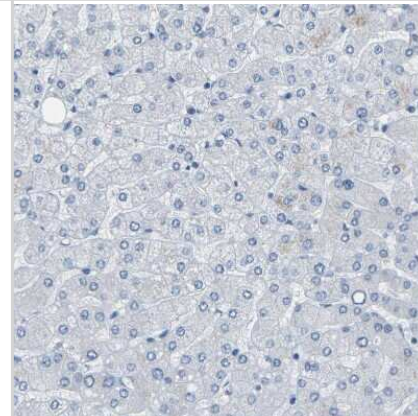
Immunohistochemistry-Paraffin: NKCC2/SLC12A1 Antibody [NBP1-80993] - Staining of human cerebellum shows no positivity in Purkinje cells as expected.



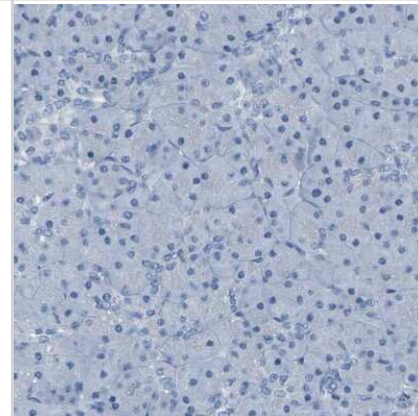
Immunohistochemistry-Paraffin: NKCC2/SLC12A1 Antibody [NBP1-80993] - Staining of human kidney shows strong membranous positivity in cells in tubules.



Immunohistochemistry-Paraffin: NKCC2/SLC12A1 Antibody [NBP1-80993] - Staining of human liver shows no positivity in hepatocytes as expected.



Immunohistochemistry-Paraffin: NKCC2/SLC12A1 Antibody [NBP1-80993] - Staining of human pancreas shows no positivity in exocrine glandular cells as expected.



## Publications

Schrodter S, Braun M, Syring I et al. Identification of the dopamine transporter SLC6A3 as a biomarker for patients with renal cell carcinoma Mol. Cancer 2016-02-02 [PMID: 26831905] (WB, Human)



### **Novus Biologicals USA**

10730 E. Briarwood Avenue  
Centennial, CO 80112  
USA  
Phone: 303.730.1950  
Toll Free: 1.888.506.6887  
Fax: 303.730.1966  
nb-customerservice@bio-techne.com

### **Bio-Techne Canada**

21 Canmotor Ave  
Toronto, ON M8Z 4E6  
Canada  
Phone: 905.827.6400  
Toll Free: 855.668.8722  
Fax: 905.827.6402  
canada.inquires@bio-techne.com

### **Bio-Techne Ltd**

19 Barton Lane  
Abingdon Science Park  
Abingdon, OX14 3NB, United Kingdom  
Phone: (44) (0) 1235 529449  
Free Phone: 0800 37 34 15  
Fax: (44) (0) 1235 533420  
info.EMEA@bio-techne.com

### **General Contact Information**

www.novusbio.com  
Technical Support: nb-technical@bio-techne.com  
Orders: nb-customerservice@bio-techne.com  
General: novus@novusbio.com

### **Products Related to NBP1-80993**

---

NBP1-80993PEP	NKCC2/SLC12A1 Recombinant Protein Antigen
NBP2-33376H	Blue Marker Antibody (6F4-F6) [HRP]
HAF008	Goat anti-Rabbit IgG Secondary Antibody [HRP]
NB7160	Goat anti-Rabbit IgG (H+L) Secondary Antibody [HRP]
NBP2-24891	Rabbit IgG Isotype Control

---

### **Limitations**

This product is for research use only and is not approved for use in humans or in clinical diagnosis. Primary Antibodies are guaranteed for 1 year from date of receipt.

For more information on our 100% guarantee, please visit [www.novusbio.com/guarantee](http://www.novusbio.com/guarantee)

Earn gift cards/discounts by submitting a review: [www.novusbio.com/reviews/submit/NBP1-80993](http://www.novusbio.com/reviews/submit/NBP1-80993)

Earn gift cards/discounts by submitting a publication using this product:  
[www.novusbio.com/publications](http://www.novusbio.com/publications)

