

Product Datasheet

CROCC Antibody - BSA Free

NBP1-80820

Unit Size: 0.1 ml

Store at 4C short term. Aliquot and store at -20C long term. Avoid freeze-thaw cycles.

www.novusbio.com



technical@novusbio.com

Publications: 13

Protocols, Publications, Related Products, Reviews, Research Tools and Images at:
www.novusbio.com/NBP1-80820

Updated 3/4/2026 v.20.1

Earn rewards for product
reviews and publications.

Submit a publication at www.novusbio.com/publications

Submit a review at www.novusbio.com/reviews/destination/NBP1-80820



NBP1-80820

CROCC Antibody - BSA Free

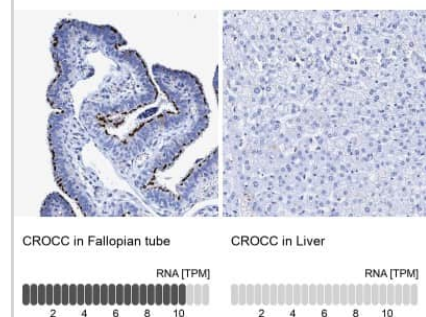
Product Information	
Unit Size	0.1 ml
Concentration	Concentrations vary lot to lot. See vial label for concentration. If unlisted please contact technical services.
Storage	Store at 4C short term. Aliquot and store at -20C long term. Avoid freeze-thaw cycles.
Clonality	Polyclonal
Preservative	0.02% Sodium Azide
Isotype	IgG
Purity	Affinity purified
Buffer	PBS (pH 7.2) and 40% Glycerol

Product Description	
Host	Rabbit
Gene ID	9696
Gene Symbol	CROCC
Species	Human
Immunogen	This antibody was developed against Recombinant Protein corresponding to amino acids: VKRLEKQNLEKDQVNKDLTEKLEALESLRLQEQALETEDGEGLQQTLRDLAQ AVLSDSESGVQLSGSERTADASNGS

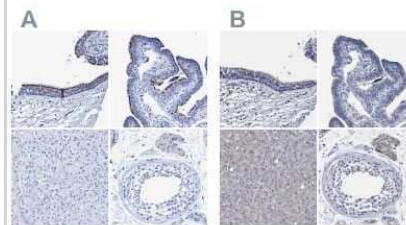
Product Application Details	
Applications	Western Blot, Immunohistochemistry-Paraffin, Immunocytochemistry/ Immunofluorescence, Immunohistochemistry
Recommended Dilutions	Western Blot 0.04-0.4 ug/ml, Immunohistochemistry 1:200 - 1:500, Immunocytochemistry/ Immunofluorescence 0.25-2 ug/ml, Immunohistochemistry-Paraffin 1:200 - 1:500
Application Notes	For IHC-Paraffin, HIER pH 6 retrieval is recommended. ICC/IF, Fixation Permeabilization: Use PFA/Triton X-100.

Images

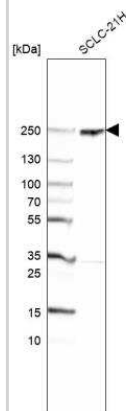
Immunohistochemistry-Paraffin: CROCC Antibody [NBP1-80820] - Staining in human fallopian tube and liver tissues using NBP1-80820 antibody. Corresponding CROCC RNA-seq data are presented for the same tissues.



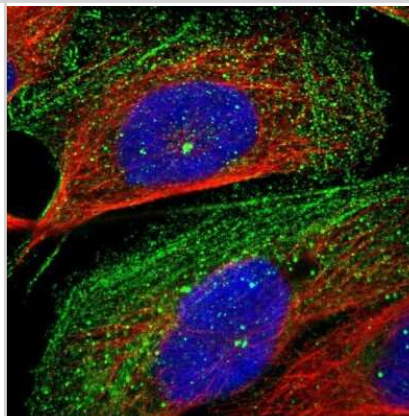
Immunohistochemistry-Paraffin: CROCC Antibody [NBP1-80820] - Staining of human bronchus, fallopian tube, liver and testis using Anti-CROCC antibody NBP1-80820 (A) shows similar protein distribution across tissues to independent antibody NBP1-80821 (B).



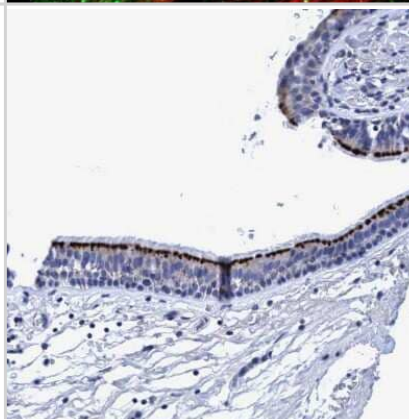
Western Blot: CROCC Antibody [NBP1-80820] - Analysis in human cell line SCLC-21H.



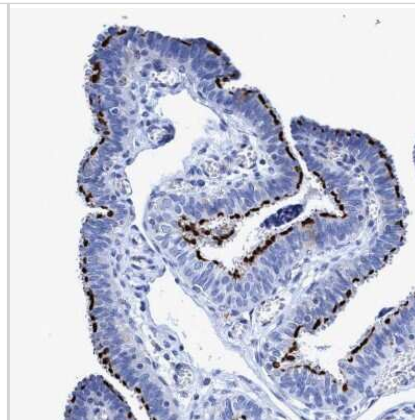
Immunocytochemistry/Immunofluorescence: CROCC Antibody [NBP1-80820] - Staining of human cell line U-2 OS shows localization to plasma membrane, centrosome & actin filaments. Antibody staining is shown in green.



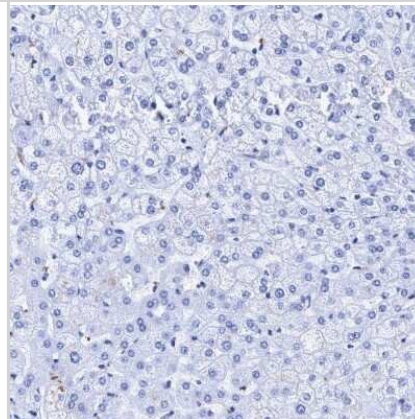
Immunohistochemistry-Paraffin: CROCC Antibody [NBP1-80820] - Staining of human bronchus shows strong positivity in apical membrane in respiratory epithelial cells.



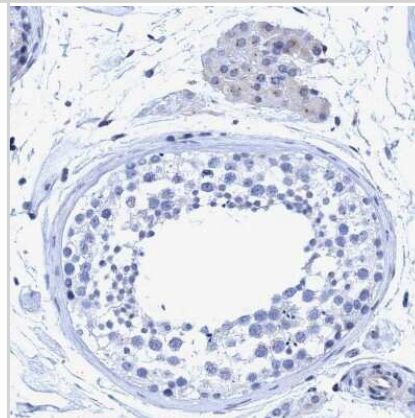
Immunohistochemistry-Paraffin: CROCC Antibody [NBP1-80820] - Staining of human Fallopian tube shows strong membranous positivity in glandular cells.



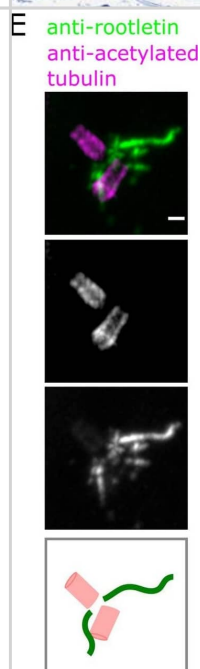
Immunohistochemistry-Paraffin: CROCC Antibody [NBP1-80820] - Staining of human liver shows no positivity in hepatocytes as expected.



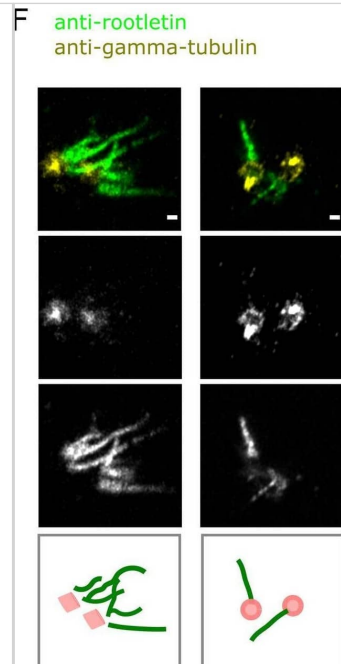
Immunohistochemistry-Paraffin: CROCC Antibody [NBP1-80820] - Staining of human testis shows very weak cytoplasmic positivity in Leydig cells.



Endogenous cNap1 bridges proximal centrioles at the nanoscale. (A–C) U-ExM of centrioles labelled with anti-acetylated tubulin antibody (pink) and cNap1 labelled with anti-cNap1 antibody (grey). The images show single Airyscan z-slices. Cartoons depict simplified centriole and cNap1 orientations. (D) ExM of centrioles labelled with anti-acetylated tubulin antibody (pink) and cNap1 labelled with anti-cNap1 antibody (grey) in a ciliated HPNE cell. The image shows a maximum intensity projection from 3D data. The cartoon depicts only the ciliary base region for simplicity. (E) U-ExM of rootlets stained with anti-rootletin antibody (green) and centrioles stained with anti-acetylated tubulin antibody (pink). (F) U-ExM of rootlets stained with anti-rootletin antibody (green) and centrioles stained with gamma-tubulin antibody (yellow). Single z-slices are shown. Panels (A), (C), (E), (F) show wild-type U2OS, (B) is endogenously tagged cNap1-mScarlet-I U2OS and (D) shows hTERT-HPNE cells. Across all panels, the scale is 200 nm, and each column represents a different cell. Data underlying this figure can be found in S2 Fig. U-ExM, ultra-expansion microscopy. Image collected and cropped by CiteAb from the following open publication (<https://pubmed.ncbi.nlm.nih.gov/36282799>), licensed under a CC-BY license. Not internally tested by Novus Biologicals.



Endogenous cNap1 bridges proximal centrioles at the nanoscale. (A–C) U-ExM of centrioles labelled with anti-acetylated tubulin antibody (pink) and cNap1 labelled with anti-cNap1 antibody (grey). The images show single Airyscan z-slices. Cartoons depict simplified centriole and cNap1 orientations. (D) ExM of centrioles labelled with anti-acetylated tubulin antibody (pink) and cNap1 labelled with anti-cNap1 antibody (grey) in a ciliated HPNE cell. The image shows a maximum intensity projection from 3D data. The cartoon depicts only the ciliary base region for simplicity. (E) U-ExM of rootlets stained with anti-rootletin antibody (green) and centrioles stained with anti-acetylated tubulin antibody (pink). (F) U-ExM of rootlets stained with anti-rootletin antibody (green) and centrioles stained with gamma-tubulin antibody (yellow). Single z-slices are shown. Panels (A), (C), (E), (F) show wild-type U2OS, (B) is endogenously tagged cNap1-mScarlet-I U2OS and (D) shows hTERT-HPNE cells. Across all panels, the scale is 200 nm, and each column represents a different cell. Data underlying this figure can be found in S2 Fig. U-ExM, ultra-expansion microscopy. Image collected and cropped by CiteAb from the following open publication (<https://pubmed.ncbi.nlm.nih.gov/36282799>), licensed under a CC-BY license. Not internally tested by Novus Biologicals.



Publications

Verschueren A, Boucherit L, Ferrari U et al. Planar polarity in primate cone photoreceptors: a potential role in Stiles Crawford effect phototropism *Communications Biology* 2022-01-24 [PMID: 35075261]

Xu G, Wei X, Tu Q, Zhou C. Up-regulated microRNA-33b inhibits epithelial-mesenchymal transition in gallbladder cancer through down-regulating CROCC *Bioscience Reports* 2020-01-31 [PMID: 31799620]

Mahen R. cNap1 bridges centriole contact sites to maintain centrosome cohesion *PLOS Biology* 2022-10-25 [PMID: 36282799]

Murakami S, Soyama A, Miyamoto D et al. Transplantation of chemically-induced liver progenitor cells ameliorates hepatic fibrosis in mice with diet-induced nonalcoholic steatohepatitis *Regenerative Therapy* 2022-12-01 [PMID: 36475025] (IF/IHC, ICC/IF, Rat)

Faubel RJ, Santos Canellas VS, Gaesser J et al. Flow blockage disrupts cilia-driven fluid transport in the epileptic brain *Acta neuropathologica* 2022-08-18 [PMID: 35980457]

Chu Z, Gruss OJ Mitotic Maturation Compensates for Premature Centrosome Splitting and PCM Loss in Human cep135 Knockout Cells *Cells* 2022-04-01 [PMID: 35406752] (ICC/IF, Human)

Park HS, Papanastasi E, Blanchard G et al. ARP-T1-associated Bazex-DuprE-Christol syndrome is an inherited basal cell cancer with ciliary defects characteristic of ciliopathies *Communications biology* 2021-05-10 [PMID: 33972689] (IF/IHC, Human)

Park HS, Pich C, Chiticariu E, Bachmann D ARP-T1 is a ciliary protein associated with a novel ciliopathy in inherited basal cell cancer, Bazex-DuprE-Christol Syndrome *bioRxiv* 2019-12-16 [PMID: 33972689] (ICC/IF, Human)

Mahen R. Stable centrosomal roots disentangle to allow interphase centriole independence. *bioRxiv*. [PMID: 29649211] (ICC/IF, Human)

Flanagan AM, Stavenschi E, Basavaraju S et al. Centriole splitting caused by loss of the centrosomal linker protein C-NAP1 reduces centriolar satellite density and impedes centrosome amplification. *Mol Biol Cell* 2017-03-15 [PMID: 28100636] (WB)

Wallmeier J, Al-Mutairi DA, Chen CT et al. Mutations in CCNO result in congenital mucociliary clearance disorder with reduced generation of multiple motile cilia. *Nat Genet* 2014-06-01 [PMID: 24747639]

Loffler H, Fechter A, Liu FY et al. DNA damage-induced centrosome amplification occurs via excessive formation of centriolar satellites. *Oncogene*. 2012-07-23 [PMID: 22824794]

More publications at <http://www.novusbio.com/NBP1-80820>



Novus Biologicals USA

10730 E. Briarwood Avenue
Centennial, CO 80112
USA

Phone: 303.730.1950

Toll Free: 1.888.506.6887

Fax: 303.730.1966

nb-customerservice@bio-techne.com

Bio-Techne Canada

21 Canmotor Ave
Toronto, ON M8Z 4E6
Canada

Phone: 905.827.6400

Toll Free: 855.668.8722

Fax: 905.827.6402

canada.inquires@bio-techne.com

Bio-Techne Ltd

19 Barton Lane
Abingdon Science Park
Abingdon, OX14 3NB, United Kingdom

Phone: (44) (0) 1235 529449

Free Phone: 0800 37 34 15

Fax: (44) (0) 1235 533420

info.EMEA@bio-techne.com

General Contact Information

www.novusbio.com

Technical Support: nb-technical@bio-techne.com

Orders: nb-customerservice@bio-techne.com

General: novus@novusbio.com

Products Related to NBP1-80820

NBP1-80820PEP	CROCC Recombinant Protein Antigen
HAF008	Goat anti-Rabbit IgG Secondary Antibody [HRP]
NB7160	Goat anti-Rabbit IgG (H+L) Secondary Antibody [HRP]
NBP2-24891	Rabbit IgG Isotype Control

Limitations

This product is for research use only and is not approved for use in humans or in clinical diagnosis. Primary Antibodies are guaranteed for 1 year from date of receipt.

For more information on our 100% guarantee, please visit www.novusbio.com/guarantee

Earn gift cards/discounts by submitting a review: www.novusbio.com/reviews/submit/NBP1-80820

Earn gift cards/discounts by submitting a publication using this product:
www.novusbio.com/publications

