

Product Datasheet

Lunapark Antibody - BSA Free NBP1-80637

Unit Size: 0.1 ml

Store at 4C short term. Aliquot and store at -20C long term. Avoid freeze-thaw cycles.

www.novusbio.com



technical@novusbio.com

Publications: 5

Protocols, Publications, Related Products, Reviews, Research Tools and Images at:
www.novusbio.com/NBP1-80637

Updated 2/8/2026 v.20.1

Earn rewards for product
reviews and publications.

Submit a publication at www.novusbio.com/publications

Submit a review at www.novusbio.com/reviews/destination/NBP1-80637



NBP1-80637

Lunapark Antibody - BSA Free

Product Information	
Unit Size	0.1 ml
Concentration	Concentrations vary lot to lot. See vial label for concentration. If unlisted please contact technical services.
Storage	Store at 4C short term. Aliquot and store at -20C long term. Avoid freeze-thaw cycles.
Clonality	Polyclonal
Preservative	0.02% Sodium Azide
Isotype	IgG
Purity	Affinity purified
Buffer	PBS (pH 7.2) and 40% Glycerol

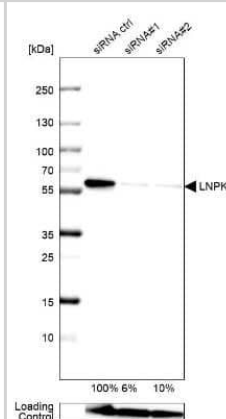
Product Description	
Description	Novus Biologicals Rabbit Lunapark Antibody - BSA Free (NBP1-80637) is a polyclonal antibody validated for use in IHC, WB and ICC/IF. Anti-Lunapark Antibody: Cited in 5 publications. All Novus Biologicals antibodies are covered by our 100% guarantee.
Host	Rabbit
Gene ID	80856
Gene Symbol	LNPK
Species	Human
Reactivity Notes	Immunogen displays the following percentage of sequence identity for non-tested species: Mouse (85%).
Immunogen	This antibody was developed against Recombinant Protein corresponding to amino acids: GALDRIVEYLVGDGPQNRALICQQCFSHNGMALKEEFYIAFRCAYCFFLNPA RKTRPQAPRLPEFSFEKRQVVEGSSSVGPLPSGSVLSSDNQFNEESLEHDVLD DNTEQTDDKIPATEQ

Product Application Details	
Applications	Western Blot, Immunohistochemistry-Paraffin, Immunocytochemistry/ Immunofluorescence, Immunohistochemistry, Knockdown Validated
Recommended Dilutions	Western Blot 0.04-0.4 ug/ml, Immunohistochemistry 1:200 - 1:500, Immunocytochemistry/ Immunofluorescence 0.25-2 ug/ml, Immunohistochemistry-Paraffin 1:200 - 1:500, Knockdown Validated
Application Notes	IHC-Paraffin, HIER pH 6 retrieval is recommended. ICC/IF, Fixation Permeabilization: Use PFA/Triton X-100.

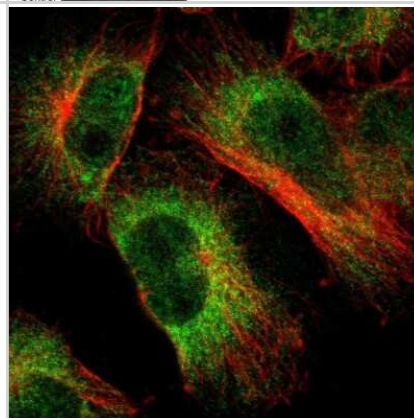


Images

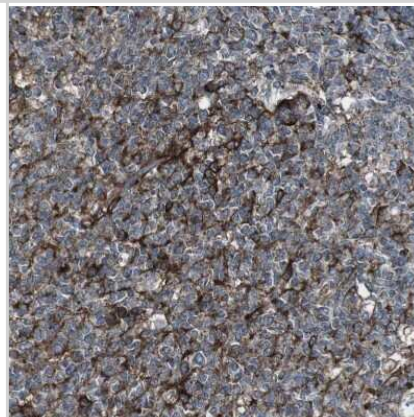
Western Blot: Lunapark Antibody [NBP1-80637] - Analysis in U-138MG cells transfected with control siRNA, target specific siRNA probe #1 and #2. Remaining relative intensity is presented. Loading control: Anti-GAPDH.



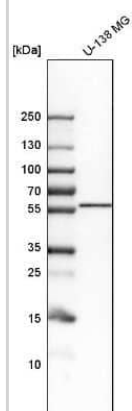
Immunocytochemistry/Immunofluorescence: Lunapark Antibody [NBP1-80637] - Staining of human cell line U-251 MG shows localization to nucleoplasm & endoplasmic reticulum. Antibody staining is shown in green.



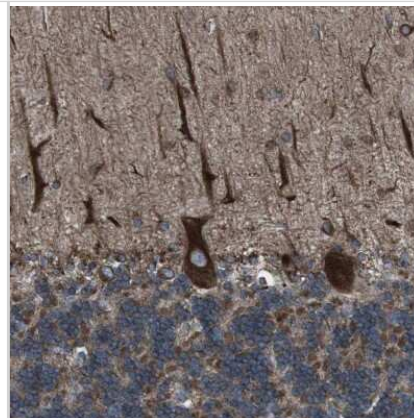
Immunohistochemistry-Paraffin: Lunapark Antibody [NBP1-80637] - Staining of human tonsil shows strong granular cytoplasmic positivity in germinal center cells.



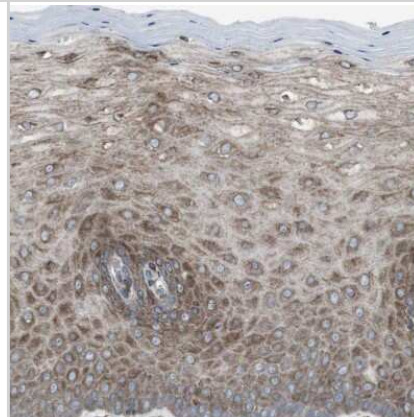
Western Blot: Lunapark Antibody [NBP1-80637] - Analysis in human cell line U-138 MG.



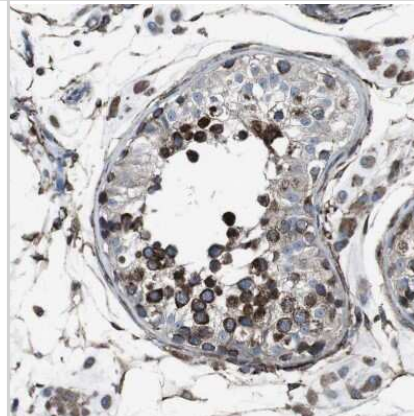
Immunohistochemistry-Paraffin: Lunapark Antibody [NBP1-80637] - Staining of human cerebellum shows strong granular cytoplasmic positivity in Purkinje cells.



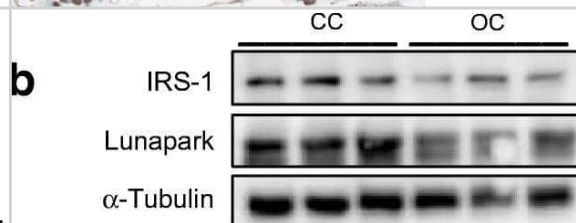
Immunohistochemistry-Paraffin: Lunapark Antibody [NBP1-80637] - Staining of human cervix shows moderate granular cytoplasmic positivity in squamous epithelial cells.



Immunohistochemistry-Paraffin: Lunapark Antibody [NBP1-80637] - Staining of human testis shows strong granular cytoplasmic positivity in cells in seminiferous ducts.



Maternal obesity compromises glucose and ER homeostasis concomitantly through miR-126-3p programming in eWAT of adult offspring. (a) Normalised relative miR-126-3p, Irs1 and Lnpk expression (n = 5 per group). (b) Representative blots followed by normalised (c) IRS-1 and (d) Lunapark protein expression, n = 6 for both. (e) Altered relative expression of ER-related genes, n = 5–6 per group. (f) Percentage of starting glucose during glucose tolerance test, n = 6–7 per group. Data in (a, c–e) were analysed by unpaired Student's t test (CC vs OC offspring). Data in (f) were analysed by two-way (repeated measures) ANOVA followed by Bonferroni's multiple comparisons test; *p < 0.05, **p < 0.01 and ***p < 0.001. All the graphs represent mean +/- SEM Image collected and cropped by CiteAb from the following open publication (<https://pubmed.ncbi.nlm.nih.gov/33501603>), licensed under a CC-BY license. Not internally tested by Novus Biologicals.



Publications

P Bagchi, X Liu, WJ Cho, B Tsai Lunapark-dependent formation of a virus-induced ER exit site contains multi-tubular ER junctions that promote viral ER-to-cytosol escape Cell Reports, 2021-12-07;37(10):110077. 2021-12-07 [PMID: 34879280] (Western Blot)

de Almeida-Faria J, Duque-Guimarães DE, Ong TP et al. Maternal obesity during pregnancy leads to adipose tissue ER stress in mice via miR-126-mediated reduction in Lunapark Diabetologia 2021-04-01 [PMID: 33501603] (Western Blot)

Tamara Moretti, Kyungho Kim, Astha Tuladhar, Jinoh Kim, Elizabeth Miller KLHL12 can form large COPII structures in the absence of CUL3 neddylation Molecular Biology of the Cell 2023-03-01 [PMID: 36652337]

Hazra R, Brine L, Garcia L et al. Platr4 is an early embryonic lncRNA that exerts its function downstream on cardiogenic mesodermal lineage commitment Developmental cell 2022-11-07 [PMID: 36347239] (WB, Mouse)

Akopian D, McGourty CA, RapE M Co-adaptor driven assembly of a CUL3 E3 ligase complex Molecular cell 2022-02-03 [PMID: 35120648] (WB, Human)





Novus Biologicals USA

10730 E. Briarwood Avenue
Centennial, CO 80112
USA
Phone: 303.730.1950
Toll Free: 1.888.506.6887
Fax: 303.730.1966
nb-customerservice@bio-techne.com

Bio-Techne Canada

21 Canmotor Ave
Toronto, ON M8Z 4E6
Canada
Phone: 905.827.6400
Toll Free: 855.668.8722
Fax: 905.827.6402
canada.inquires@bio-techne.com

Bio-Techne Ltd

19 Barton Lane
Abingdon Science Park
Abingdon, OX14 3NB, United Kingdom
Phone: (44) (0) 1235 529449
Free Phone: 0800 37 34 15
Fax: (44) (0) 1235 533420
info.EMEA@bio-techne.com

General Contact Information

www.novusbio.com
Technical Support: nb-technical@bio-techne.com
Orders: nb-customerservice@bio-techne.com
General: novus@novusbio.com

Products Related to NBP1-80637

NBP1-80637PEP	Lunapark Recombinant Protein Antigen
NBP2-33376H	Blue Marker Antibody (6F4-F6) [HRP]
HAF008	Goat anti-Rabbit IgG Secondary Antibody [HRP]
NB7160	Goat anti-Rabbit IgG (H+L) Secondary Antibody [HRP]
NBP2-24891	Rabbit IgG Isotype Control

Limitations

This product is for research use only and is not approved for use in humans or in clinical diagnosis. Primary Antibodies are guaranteed for 1 year from date of receipt.

For more information on our 100% guarantee, please visit www.novusbio.com/guarantee

Earn gift cards/discounts by submitting a review: www.novusbio.com/reviews/submit/NBP1-80637

Earn gift cards/discounts by submitting a publication using this product:
www.novusbio.com/publications

