

# Product Datasheet

## Aminopeptidase P1/XPNPEP1 Antibody - BSA Free NBP1-80614

Unit Size: 0.1 ml

Store at 4C short term. Aliquot and store at -20C long term. Avoid freeze-thaw cycles.

[www.novusbio.com](http://www.novusbio.com)



[technical@novusbio.com](mailto:technical@novusbio.com)

### Publications: 2

Protocols, Publications, Related Products, Reviews, Research Tools and Images at:  
[www.novusbio.com/NBP1-80614](http://www.novusbio.com/NBP1-80614)

Updated 3/4/2026 v.20.1

Earn rewards for product  
reviews and publications.

Submit a publication at [www.novusbio.com/publications](http://www.novusbio.com/publications)

Submit a review at [www.novusbio.com/reviews/destination/NBP1-80614](http://www.novusbio.com/reviews/destination/NBP1-80614)



**NBP1-80614****Aminopeptidase P1/XPNPEP1 Antibody - BSA Free**

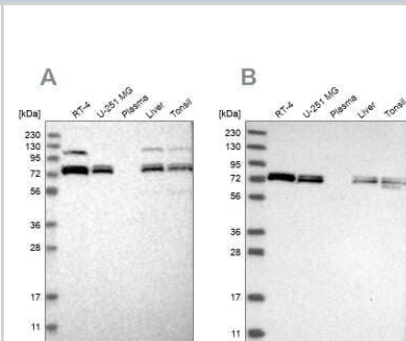
Product Information	
Unit Size	0.1 ml
Concentration	Concentrations vary lot to lot. See vial label for concentration. If unlisted please contact technical services.
Storage	Store at 4C short term. Aliquot and store at -20C long term. Avoid freeze-thaw cycles.
Clonality	Polyclonal
Preservative	0.02% Sodium Azide
Isotype	IgG
Purity	Affinity purified
Buffer	PBS (pH 7.2) and 40% Glycerol

Product Description	
Host	Rabbit
Gene ID	7511
Gene Symbol	XPNPEP1
Species	Human
Immunogen	This antibody was developed against Recombinant Protein corresponding to amino acids: AIIGLETIMLFIDGDRIDAPSVKEHLLLDLGLAEYRIQVHPYKSILSELKALCADLS PREKVWVSDKASYAVSETIPKDHRC

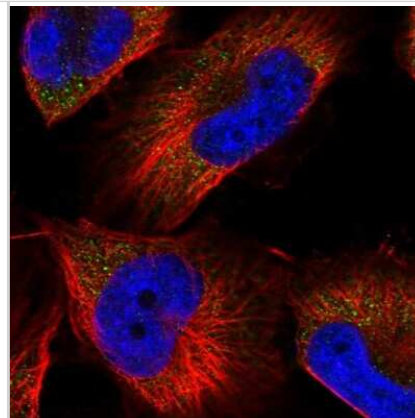
Product Application Details	
Applications	Western Blot, Immunohistochemistry-Paraffin, Immunocytochemistry/ Immunofluorescence, Immunohistochemistry
Recommended Dilutions	Western Blot 0.04-0.4 ug/ml, Immunohistochemistry 1:200 - 1:500, Immunocytochemistry/ Immunofluorescence 0.25-2 ug/ml, Immunohistochemistry-Paraffin 1:200 - 1:500
Application Notes	For IHC-Paraffin, HIER pH 6 retrieval is recommended. Immunocytochemistry/Immunofluorescence Fixation Permeabilization: Use PFA/Triton X-100.

**Images**

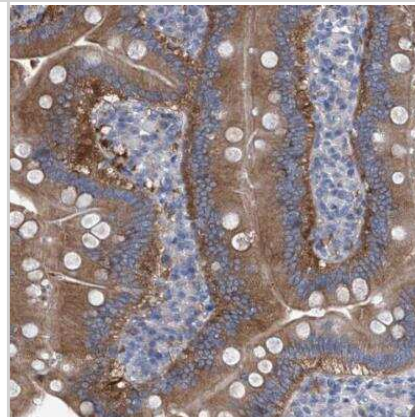
Western Blot: Aminopeptidase P1/XPNPEP1 Antibody [NBP1-80614] - Analysis using Anti-XPNPEP1 antibody NBP1-80614 (A) shows similar pattern to independent antibody NBP1-80613 (B).



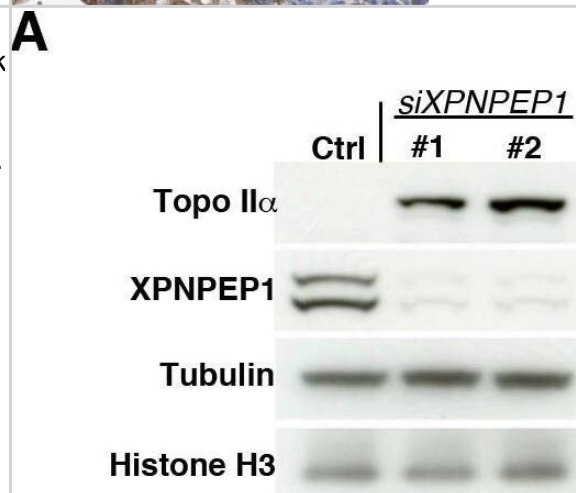
Immunocytochemistry/Immunofluorescence: Aminopeptidase P1/XPNPEP1 Antibody [NBP1-80614] - Immunofluorescent staining of human cell line U-251 MG shows localization to cytosol.



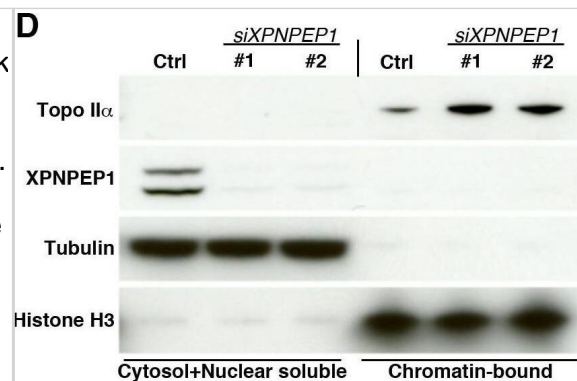
Immunohistochemistry-Paraffin: Aminopeptidase P1/XPNPEP1 Antibody [NBP1-80614] - Staining of human duodenum shows cytoplasmic positivity in glandular cells.



Knockdown of human XPNPEP1 causes accumulation of DNA damage. (A) Western blot analysis on total protein extracts showing efficient knock down of XPNPEP1 by two independent siRNAs that also induce accumulation of Topoisomerase II $\alpha$ . (B) Pulse field gel stained with ethidium bromide in control cells and following knock down of XPNPEP1. Note increased intensity of band labelled as "a" and the smear label as "b" corresponding to fragmented DNA. Graphs show quantification of the relative intensity of band "a" and smear "b". (C) XPNPEP1 knockdown causes an increase in the % of cells positive for  $\gamma$ H2AX. Dots show % of cells with >5  $\gamma$ H2AX foci from three experiments, bars show mean of the three experiments, and error bars represent standard deviations. Statistical significance was calculated by a one-way ANOVA test, note that differences between siRNA control and the two siRNAs targeting XPNPEP1 are significant (\* indicates P value = 0.048 and \*\* indicates P value = 0.0082). (D) Western blot analysis on fractionated protein extracts from U2OS cells treated with control siRNA and two independent XPNPEP1 siRNAs showing that Topoisomerase II accumulates on the DNA-bound fraction following XPNPEP1 knockdown. Image collected and cropped by CiteAb from the following open publication (<https://pubmed.ncbi.nlm.nih.gov/35081133>), licensed under a CC-BY license. Not internally tested by Novus Biologicals.



Knockdown of human XPNPEP1 causes accumulation of DNA damage. (A) Western blot analysis on total protein extracts showing efficient knock down of XPNPEP1 by two independent siRNAs that also induce accumulation of Topoisomerase II $\alpha$ . (B) Pulse field gel stained with ethidium bromide in control cells and following knock down of XPNPEP1. Note increased intensity of band labelled as "a" and the smear label as "b" corresponding to fragmented DNA. Graphs show quantification of the relative intensity of band "a" and smear "b". (C) XPNPEP1 knockdown causes an increase in the % of cells positive for  $\gamma$ H2AX. Dots show % of cells with >5  $\gamma$ H2AX foci from three experiments, bars show mean of the three experiments, and error bars represent standard deviations. Statistical significance was calculated by a one-way ANOVA test, note that differences between siRNA control and the two siRNAs targeting XPNPEP1 are significant (\* indicates P value = 0.048 and \*\* indicates P value = 0.0082). (D) Western blot analysis on fractionated protein extracts from U2OS cells treated with control siRNA and two independent XPNPEP1 siRNAs showing that Topoisomerase II accumulates on the DNA-bound fraction following XPNPEP1 knockdown. Image collected and cropped by CiteAb from the following open publication (<https://pubmed.ncbi.nlm.nih.gov/35081133>), licensed under a CC-BY license. Not internally tested by Novus Biologicals.



## Publications

Silva N, Castellano-Pozo M, Matsuzaki K et al. Proline-specific aminopeptidase P prevents replication-associated genome instability PLOS Genetics 2022-01-26 [PMID: 35081133] (Western Blot)

Moore TM, Cheng L, Wolf DM et al. Parkin regulates adiposity by coordinating mitophagy with mitochondrial biogenesis in white adipocytes Nature communications 2022-11-04 [PMID: 36333379] (WB, Mouse)



### **Novus Biologicals USA**

10730 E. Briarwood Avenue  
Centennial, CO 80112  
USA  
Phone: 303.730.1950  
Toll Free: 1.888.506.6887  
Fax: 303.730.1966  
nb-customerservice@bio-techne.com

### **Bio-Techne Canada**

21 Canmotor Ave  
Toronto, ON M8Z 4E6  
Canada  
Phone: 905.827.6400  
Toll Free: 855.668.8722  
Fax: 905.827.6402  
canada.inquires@bio-techne.com

### **Bio-Techne Ltd**

19 Barton Lane  
Abingdon Science Park  
Abingdon, OX14 3NB, United Kingdom  
Phone: (44) (0) 1235 529449  
Free Phone: 0800 37 34 15  
Fax: (44) (0) 1235 533420  
info.EMEA@bio-techne.com

### **General Contact Information**

www.novusbio.com  
Technical Support: nb-technical@bio-techne.com  
Orders: nb-customerservice@bio-techne.com  
General: novus@novusbio.com

### **Products Related to NBP1-80614**

---

NBP1-80614PEP	Aminopeptidase P1/XPNPEP1 Recombinant Protein Antigen
HAF008	Goat anti-Rabbit IgG Secondary Antibody [HRP]
NB7160	Goat anti-Rabbit IgG (H+L) Secondary Antibody [HRP]
NBP2-24891	Rabbit IgG Isotype Control

---

### **Limitations**

This product is for research use only and is not approved for use in humans or in clinical diagnosis. Primary Antibodies are guaranteed for 1 year from date of receipt.

For more information on our 100% guarantee, please visit [www.novusbio.com/guarantee](http://www.novusbio.com/guarantee)

Earn gift cards/discounts by submitting a review: [www.novusbio.com/reviews/submit/NBP1-80614](http://www.novusbio.com/reviews/submit/NBP1-80614)

Earn gift cards/discounts by submitting a publication using this product:  
[www.novusbio.com/publications](http://www.novusbio.com/publications)

