

# Product Datasheet

## KCTD7 Antibody - BSA Free

### NBP1-80094

Unit Size: 100 ul

Store at 4C short term. Aliquot and store at -20C long term. Avoid freeze-thaw cycles.

[www.novusbio.com](http://www.novusbio.com)



[technical@novusbio.com](mailto:technical@novusbio.com)

Protocols, Publications, Related Products, Reviews, Research Tools and Images at:  
[www.novusbio.com/NBP1-80094](http://www.novusbio.com/NBP1-80094)

Updated 2/1/2026 v.20.1

Earn rewards for product  
reviews and publications.

Submit a publication at [www.novusbio.com/publications](http://www.novusbio.com/publications)

Submit a review at [www.novusbio.com/reviews/destination/NBP1-80094](http://www.novusbio.com/reviews/destination/NBP1-80094)



**NBP1-80094**

KCTD7 Antibody - BSA Free

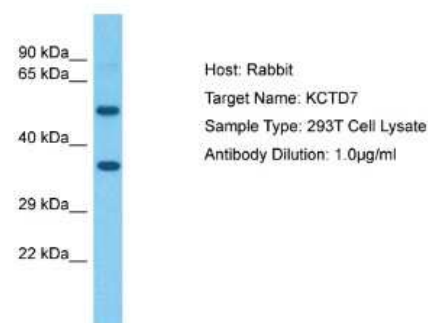
Product Information	
Unit Size	100 ul
Concentration	0.5 mg/ml
Storage	Store at 4C short term. Aliquot and store at -20C long term. Avoid freeze-thaw cycles.
Clonality	Polyclonal
Preservative	0.09% Sodium Azide
Isotype	IgG
Purity	Affinity purified
Buffer	PBS, 2% Sucrose

Product Description	
Description	The addition of 50% glycerol is optional for those storing this antibody at -20C and not aliquoting smaller units. However, please note that glycerol may interrupt some downstream antibody applications and should be added with caution.
Host	Rabbit
Gene ID	154881
Gene Symbol	KCTD7
Species	Human
Immunogen	Synthetic peptide directed towards the N terminal of human KCTD7 containing the following sequence: VVVTGREPDSRRQDGAMSSSDAEDDFLEPATPTATQAGHALPLLPQEFPE. Peptide sequence VVVTGREPDSRRQDGAMSSSDAEDDFLEPATPTATQAGHALPLLPQEFPE. The peptide sequence for this immunogen was taken from within the described region.

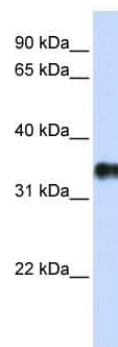
Product Application Details	
Applications	Western Blot
Recommended Dilutions	Western Blot 1.0 ug/ml

**Images**

Western Blot: KCTD7 Antibody [NBP1-80094] - Host: Rabbit. Target Name: KCTD7. Sample Tissue: Human 293T Whole Cell. Antibody Dilution: 1ug/ml

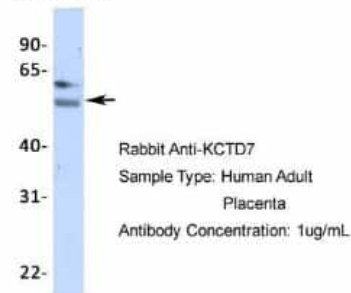


Western Blot: KCTD7 Antibody [NBP1-80094] - Transfected 293T cell lysate, concentration 0.2-1 ug/ml.



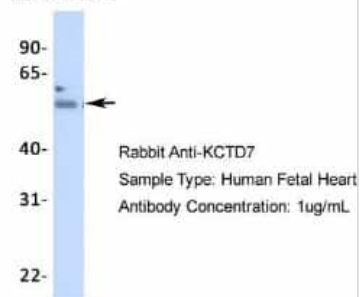
Western Blot: KCTD7 Antibody [NBP1-80094] - Human Adult Placenta, Antibody Dilution: 1.0 ug/ml.

**KCTD7**



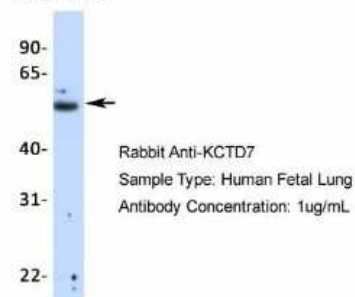
Western Blot: KCTD7 Antibody [NBP1-80094] - Human Fetal Heart, Antibody Dilution: 1.0 ug/ml.

**KCTD7**



Western Blot: KCTD7 Antibody [NBP1-80094] - Human Fetal Lung, Antibody Dilution: 1.0 ug/ml.

**KCTD7**





### **Novus Biologicals USA**

10730 E. Briarwood Avenue  
Centennial, CO 80112  
USA  
Phone: 303.730.1950  
Toll Free: 1.888.506.6887  
Fax: 303.730.1966  
nb-customerservice@bio-techne.com

### **Bio-Techne Canada**

21 Canmotor Ave  
Toronto, ON M8Z 4E6  
Canada  
Phone: 905.827.6400  
Toll Free: 855.668.8722  
Fax: 905.827.6402  
canada.inquires@bio-techne.com

### **Bio-Techne Ltd**

19 Barton Lane  
Abingdon Science Park  
Abingdon, OX14 3NB, United Kingdom  
Phone: (44) (0) 1235 529449  
Free Phone: 0800 37 34 15  
Fax: (44) (0) 1235 533420  
info.EMEA@bio-techne.com

### **General Contact Information**

www.novusbio.com  
Technical Support: nb-technical@bio-techne.com  
Orders: nb-customerservice@bio-techne.com  
General: novus@novusbio.com

### **Products Related to NBP1-80094**

---

HAF008	Goat anti-Rabbit IgG Secondary Antibody [HRP]
NB7160	Goat anti-Rabbit IgG (H+L) Secondary Antibody [HRP]
NBP2-24891	Rabbit IgG Isotype Control
H00006326-Q01-10ug	Recombinant Human SCN2A GST (N-Term) Protein

---

### **Limitations**

This product is for research use only and is not approved for use in humans or in clinical diagnosis. Primary Antibodies are guaranteed for 1 year from date of receipt.

For more information on our 100% guarantee, please visit [www.novusbio.com/guarantee](http://www.novusbio.com/guarantee)

Earn gift cards/discounts by submitting a review: [www.novusbio.com/reviews/submit/NBP1-80094](http://www.novusbio.com/reviews/submit/NBP1-80094)

Earn gift cards/discounts by submitting a publication using this product:  
[www.novusbio.com/publications](http://www.novusbio.com/publications)

