

Product Datasheet

IGF-I R/IGF1R Antibody - BSA Free NBP1-77680

Unit Size: 0.1 ml

Store at 4C short term. Aliquot and store at -20C long term. Avoid freeze-thaw cycles.

www.novusbio.com



technical@novusbio.com

Reviews: 1 Publications: 2

Protocols, Publications, Related Products, Reviews, Research Tools and Images at:
www.novusbio.com/NBP1-77680

Updated 9/9/2025 v.20.1

**Earn rewards for product
reviews and publications.**

Submit a publication at www.novusbio.com/publications

Submit a review at www.novusbio.com/reviews/destination/NBP1-77680



NBP1-77680

IGF-I R/IGF1R Antibody - BSA Free

Product Information	
Unit Size	0.1 ml
Concentration	1.09 mg/ml
Storage	Store at 4C short term. Aliquot and store at -20C long term. Avoid freeze-thaw cycles.
Clonality	Polyclonal
Preservative	0.05% Sodium Azide
Isotype	IgG
Purity	Immunogen affinity purified
Buffer	PBS and 30% Glycerol

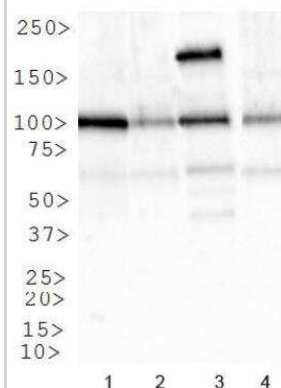
Product Description	
Description	Novus Biologicals Rabbit IGF-I R/IGF1R Antibody - BSA Free (NBP1-77680) is a polyclonal antibody validated for use in IHC, WB and ICC/IF. Anti-IGF-I R/IGF1R Antibody: Cited in 2 publications. All Novus Biologicals antibodies are covered by our 100% guarantee.
Host	Rabbit
Gene ID	3480
Gene Symbol	IGF1R
Species	Human, Mouse, Rat, Equine, Primate
Reactivity Notes	Reactivity with Equine reported via customer feedback. Predicted to react with Bovine (100%).
Immunogen	A synthetic peptide made to an internal portion of the human IGF1 Receptor protein (between residues 700-800) [UniProt P08069]

Product Application Details	
Applications	Western Blot, Immunohistochemistry-Paraffin, Immunocytochemistry/Immunofluorescence, Immunohistochemistry
Recommended Dilutions	Western Blot 1 ug/ml, Immunohistochemistry, Immunocytochemistry/Immunofluorescence 1:50-1:100, Immunohistochemistry-Paraffin
Application Notes	This IGFR1 antibody is useful for Immunocytochemistry/Immunofluorescence and Western blot where a band is seen ~100 kDa.

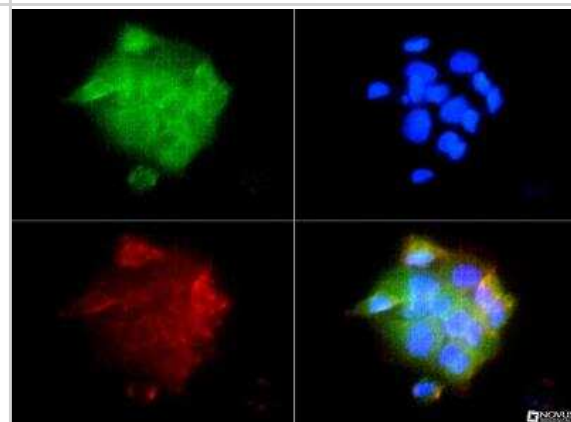


Images

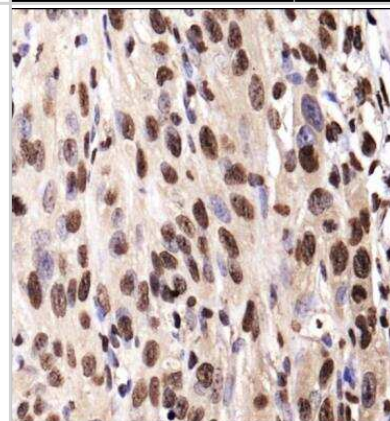
Western Blot: IGF-I R Antibody [NBP1-77680] - Analysis of IGFR1 in: 1. HeLa, 2. NIH/3T3, 3. SK-BR-3 and 4. COS7.



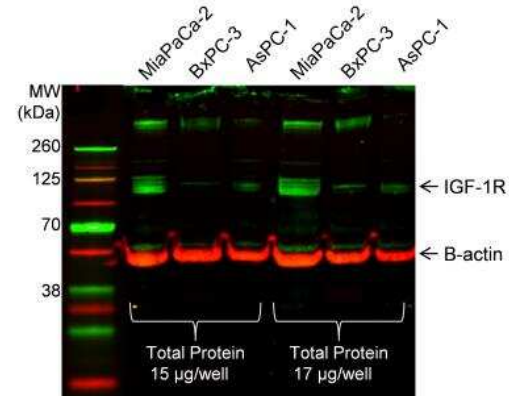
Immunocytochemistry/Immunofluorescence: IGF-I R Antibody [NBP1-77680] - IGF1 receptor (EC) antibody was tested in A431 cells with FITC (green). Nuclei and actin were counterstained with Dapi (blue) and Phalloidin (red).



Immunohistochemistry-Paraffin: IGF-I R Antibody [NBP1-77680] - IHC analysis of a formalin fixed paraffin embedded tissue section of the human kidney cancer xenograft using 1:200 dilution of IGF-I R antibody (NBP1-77680). The signal was developed using HRP-DAB method which followed counterstaining of the cells with hematoxylin.



Western Blot: IGF-I R Antibody [NBP1-77680] - Analysis of IGF-I R in human pancreatic cancer cell lines (MiaPaCa-2, AsPC-1, and BxPC-3) using anti-IGF-I R antibody. Image from verified customer review.



Publications

Keleher MR, Erickson K, Smith HA, et al. Placental Insulin/IGF-1 Signaling, PGC1 α , and Inflammatory Pathways are Associated With Metabolic Outcomes at 4-6 years of Age: The ECHO Healthy Start Cohort Diabetes 2021-01-07 [PMID: 33414248]

Bale LK, Resch ZT, Harstad SL et al. Constitutive Expression of Pregnancy Associated Plasma Protein-A in Arterial Smooth Muscle Reduces the Vascular Response to Injury In Vivo Am J Physiol Endocrinol Metab 2012-11-20 [PMID: 23169786] (WB, Mouse)



Procedures

Western Blot protocol specific for IGF1R antibody (NBP1-77680)

IGF-I R/IGF1R Antibody:

Western Blot Protocol

1. Perform SDS-PAGE on samples to be analyzed, loading 40 ug of total protein per lane.
 2. Transfer proteins to membrane according to the instructions provided by the manufacturer of the membrane and transfer apparatus.
 3. Stain according to standard Ponceau S procedure (or similar product) to assess transfer success, and mark molecular weight standards where appropriate.
 4. Rinse the blot.
 5. Block the membrane using standard blocking buffer for at least 1 hour.
 6. Wash the membrane in wash buffer three times for 10 minutes each.
 7. Dilute primary antibody in blocking buffer and incubate 1 hour at room temperature.
 8. Wash the membrane in wash buffer three times for 10 minutes each.
 9. Apply the diluted HRP conjugated secondary antibody in blocking buffer (as per manufacturers instructions) and incubate 1 hour at room temperature.
 10. Wash the blot in wash buffer three times for 10 minutes each (this step can be repeated as required to reduce background).
 11. Apply the detection reagent of choice in accordance with the manufacturers instructions.
- Note: Tween-20 can be added to the blocking or antibody dilution buffer at a final concentration of 0.05-0.2%.

*The above information is only intended as a guide. The researcher should determine what protocol best meets their needs. Please follow safe laboratory procedures.

Immunohistochemistry-Paraffin Embedded Sections protocol specific for IGF1R antibody (NBP1-77680)

IGF-I R/IGF1R Antibody:

Immunohistochemistry-Paraffin Embedded Sections

Antigen Unmasking:

Bring slides to a boil in 10 mM sodium citrate buffer (pH 6.0) then maintain at a sub-boiling temperature for 10 minutes. Cool slides on bench-top for 30 minutes.

Staining:

1. Wash sections in deionized water three times for 5 minutes each.
2. Wash sections in wash buffer for 5 minutes.
3. Block each section with 100-400 ul blocking solution for 1 hour at room temperature.
4. Remove blocking solution and add 100-400 ul diluted primary antibody. Incubate overnight at 4C.
5. Remove antibody solution and wash sections in wash buffer three times for 5 minutes each.
6. Add 100-400 ul biotinylated diluted secondary antibody. Incubate 30 minutes at room temperature.
7. Remove secondary antibody solution and wash sections three times with wash buffer for 5 minutes each.
8. Add 100-400 ul Streptavidin-HRP reagent to each section and incubate for 30 minutes at room temperature.
9. Wash sections three times in wash buffer for 5 minutes each.
10. Add 100-400 ul DAB substrate to each section and monitor staining closely.
11. As soon as the sections develop, immerse slides in deionized water.
12. Counterstain sections in hematoxylin.
13. Wash sections in deionized water two times for 5 minutes each.
14. Dehydrate sections.
15. Mount coverslips.

*The above information is only intended as a guide. The researcher should determine what protocol best meets their needs. Please follow safe laboratory procedures.



Immunocytochemistry/Immunofluorescence Protocol for IGF1 Receptor Antibody (NBP1-77680)

IGF-I R/IGF1R Antibody:

Immunocytochemistry Protocol

Culture cells to appropriate density in 35 mm culture dishes or 6-well plates.

1. Remove culture medium and add 10% formalin to the dish. Fix at room temperature for 30 minutes.
2. Remove the formalin and add ice cold methanol. Incubate for 5-10 minutes.
3. Remove methanol and add washing solution (i.e. PBS). Be sure to not let the specimen dry out. Wash three times for 10 minutes.
4. To block nonspecific antibody binding incubate in 10% normal goat serum from 1 hour to overnight at room temperature.
5. Add primary antibody at appropriate dilution and incubate at room temperature from 2 hours to overnight at room temperature.
6. Remove primary antibody and replace with washing solution. Wash three times for 10 minutes.
7. Add secondary antibody at appropriate dilution. Incubate for 1 hour at room temperature.
8. Remove antibody and replace with wash solution, then wash for 10 minutes. Add Hoechst 33258 to wash solution at 1:25,000 and incubate for 10 minutes. Wash a third time for 10 minutes.
9. Cells can be viewed directly after washing. The plates can also be stored in PBS containing Azide covered in Parafilm (TM). Cells can also be cover-slipped using Fluoromount, with appropriate sealing.

*The above information is only intended as a guide. The researcher should determine what protocol best meets their needs. Please follow safe laboratory procedures.





Novus Biologicals USA

10730 E. Briarwood Avenue
Centennial, CO 80112
USA
Phone: 303.730.1950
Toll Free: 1.888.506.6887
Fax: 303.730.1966
nb-customerservice@bio-techne.com

Bio-Techne Canada

21 Canmotor Ave
Toronto, ON M8Z 4E6
Canada
Phone: 905.827.6400
Toll Free: 855.668.8722
Fax: 905.827.6402
canada.inquires@bio-techne.com

Bio-Techne Ltd

19 Barton Lane
Abingdon Science Park
Abingdon, OX14 3NB, United Kingdom
Phone: (44) (0) 1235 529449
Free Phone: 0800 37 34 15
Fax: (44) (0) 1235 533420
info.EMEA@bio-techne.com

General Contact Information

www.novusbio.com
Technical Support: nb-technical@bio-techne.com
Orders: nb-customerservice@bio-techne.com
General: novus@novusbio.com

Products Related to NBP1-77680

NBP1-77680PEP	IGF-I R/IGF1R Antibody Blocking Peptide
NBP2-33376H	Blue Marker Antibody (6F4-F6) [HRP]
HAF008	Goat anti-Rabbit IgG Secondary Antibody [HRP]
NB7160	Goat anti-Rabbit IgG (H+L) Secondary Antibody [HRP]
NBP2-24891	Rabbit IgG Isotype Control

Limitations

This product is for research use only and is not approved for use in humans or in clinical diagnosis. Primary Antibodies are guaranteed for 1 year from date of receipt.

For more information on our 100% guarantee, please visit www.novusbio.com/guarantee

Earn gift cards/discounts by submitting a review: www.novusbio.com/reviews/submit/NBP1-77680

Earn gift cards/discounts by submitting a publication using this product:
www.novusbio.com/publications

